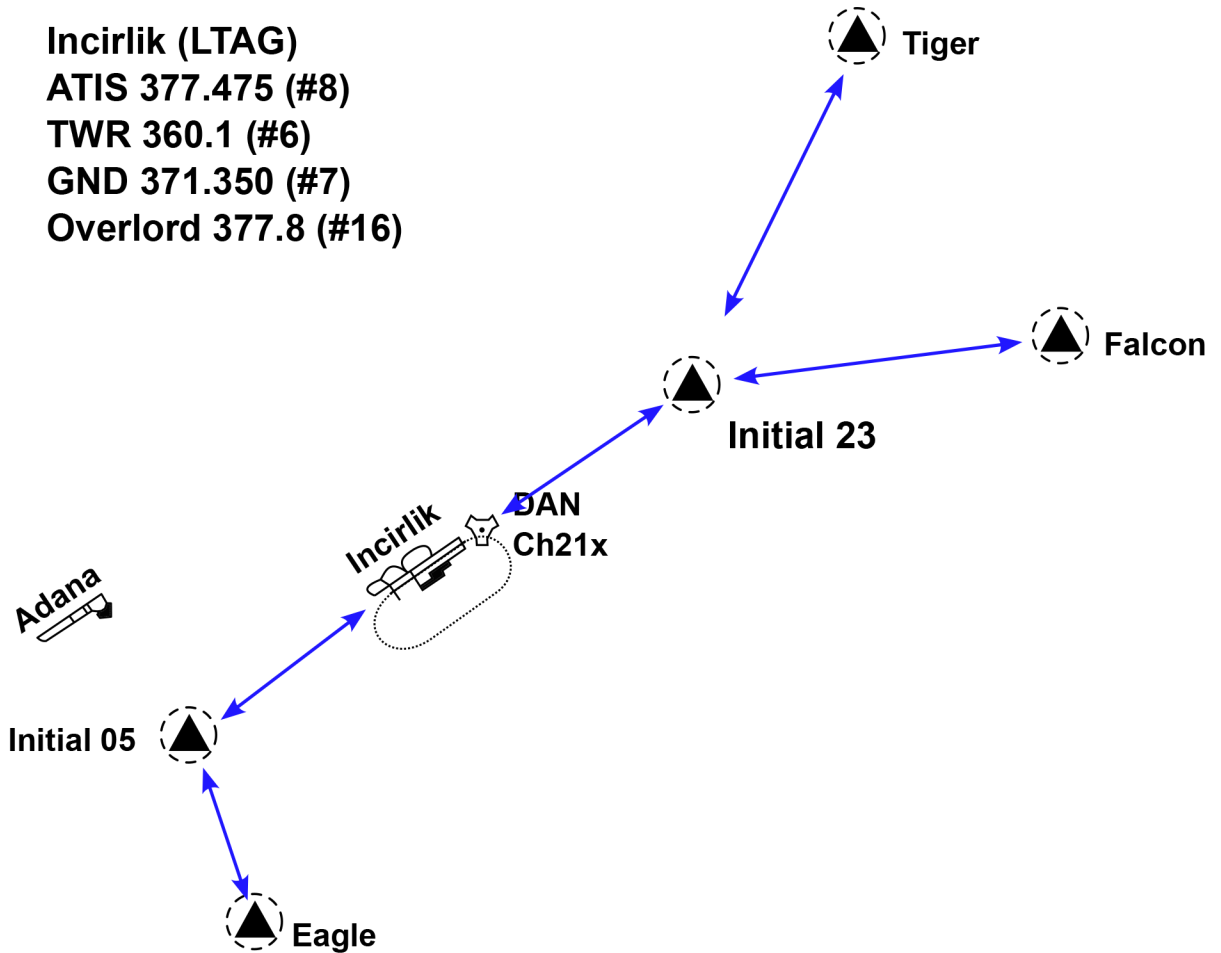


LTAG VFR Chart RWY 05 / 23

Incirlik (LTAG)
ATIS 377.475 (#8)
TWR 360.1 (#6)
GND 371.350 (#7)
Overlord 377.8 (#16)



Entry : OHB 2500ft
straight-in 2000ft

initial : OHB 2000ft
straight-in 1500ft

OHB and pattern at 2000ft

Waypoints

Tiger N37 10.618 E035 35.730
Falcon N37 05.070 E035 40.887
Eagle N36 52.933 E035 21.614
Initial 05 N36 56.645 E035 19.845
Initial 23 N37 03.954 E035 31.867