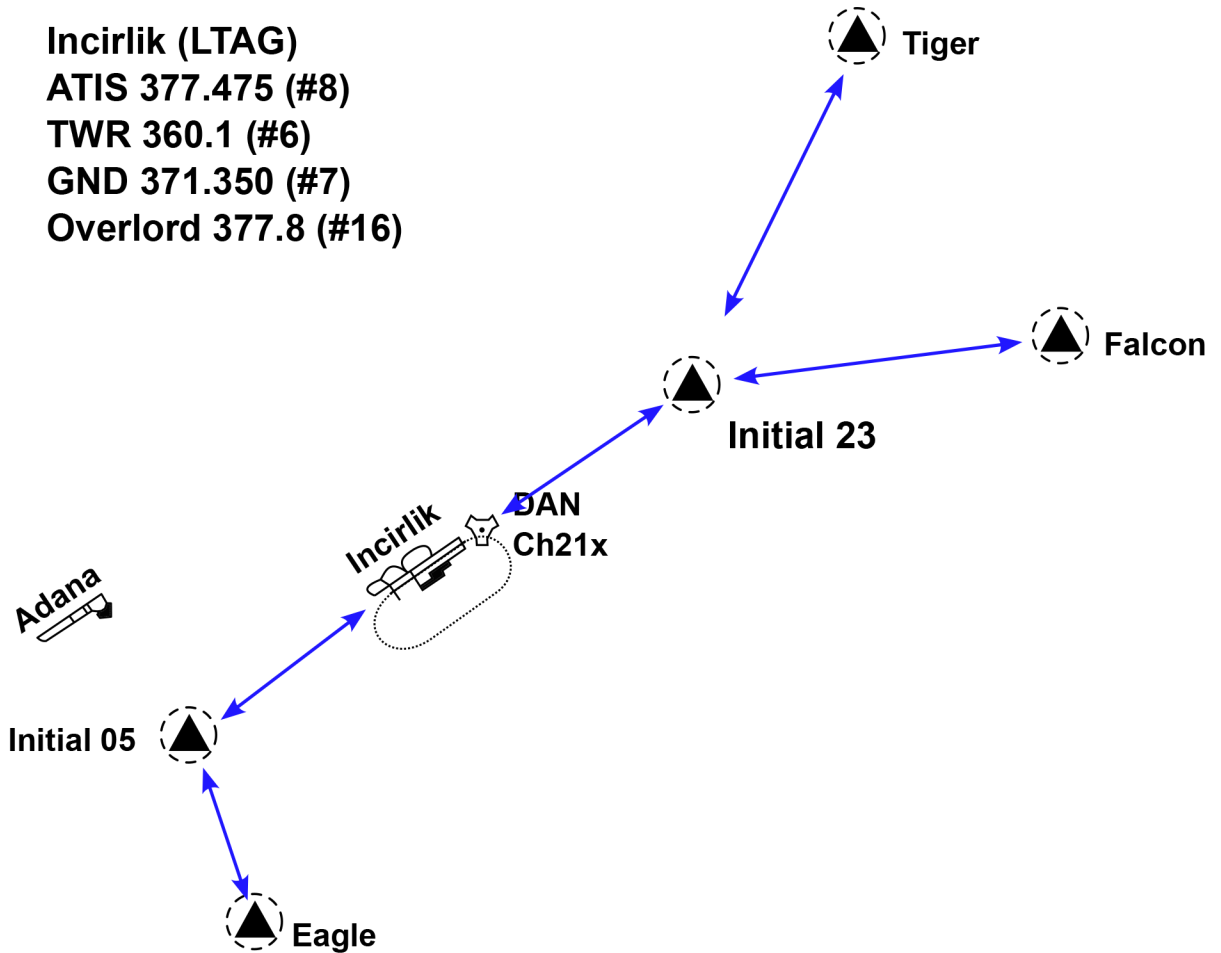


# LTAG VFR Chart RWY 05 / 23

**Incirlik (LTAG)**  
ATIS 377.475 (#8)  
TWR 360.1 (#6)  
GND 371.350 (#7)  
Overlord 377.8 (#16)



**Entry : OHB 2500ft**  
**straight-in 2000ft**

**initial : OHB 2000ft**  
**straight-in 1500ft**

**OHB and pattern at 2000ft**

## Waypoints

**Tiger N37 10.618 E035 35.730**  
**Falcon N37 05.070 E035 40.887**  
**Eagle N36 52.933 E035 21.614**  
**Initial 05 N36 56.645 E035 19.845**  
**Initial 23 N37 03.954 E035 31.867**