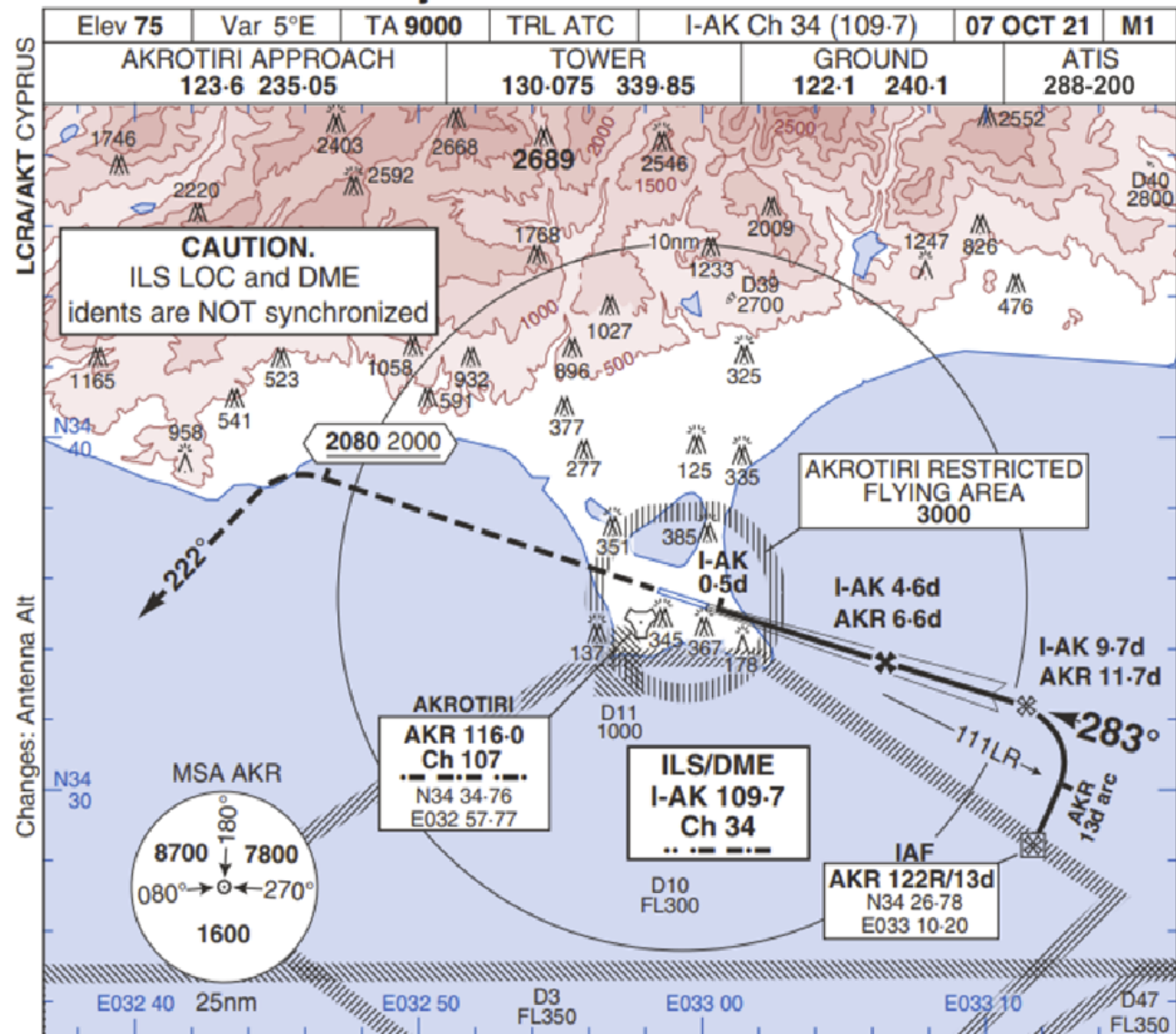


TAC to ILS/DME Rwy 28

AKROTIRI

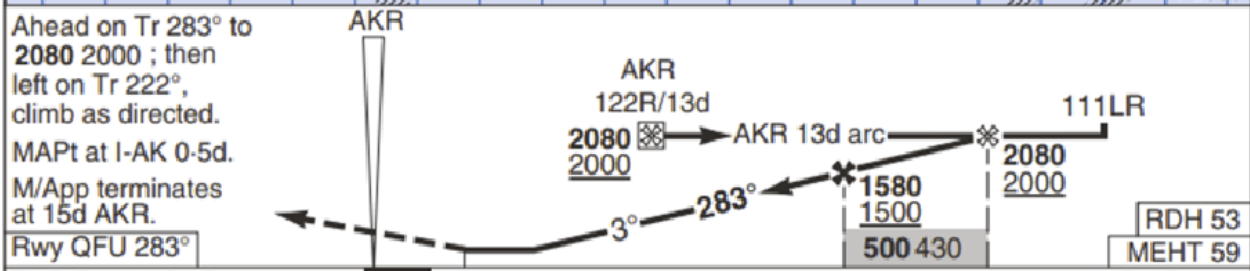


LCRA/AKT CYPRUS

Changes: Antenna Alt

No1 AIDU Last Amended 09 AUG 21

© UK MOD Crown Copyright 2021. No1 AIDU is not responsible for, and claims no right to, the content or accuracy of 3rd party documents/information.



Ahead on Tr 283° to 2080 2000 ; then left on Tr 222°, climb as directed. MAPt at I-AK 0-5d. M/App terminates at 15d AKR.		AKR 122R/13d		111LR				
Rwy QFU 283°		2080 2000		2080 2000				
THR Elev 74/3hPa		0.5		4-6				
CAT ILS/DME ①		LOC/DME ②		CIRC ③				
MIPS	A	280 200	390 320	680 610	① When ALS inop increase vis Cat ABCD by 400m, Cat E by 500m. ② When ALS inop increase vis Cat ABCDE by 600m. ③ CIRC prohibited N of Rwy. 4. Auto coupled ILS approaches Not Auth. 5. ILS will only be monitored in PAR on request, once established act will be transferred to TWR. 6. DME I-AK reads zero at THR. 7. Timing Not Auth to define MAPt.			
	B	800m		680 610		DME I-AK		
	C	290 210		780 710		4 1410		
	D	310 230		780 710		5 1190		
	E	340 260		1380 1310		3 1090		
GS (kt)		80	120	150	180	210	4 860	5 790
FAF-MAPt 4.1nm		3:06	2:03	1:38	1:22	1:10	2 770	3 540
ROD (fpm)		3°	420	640	800	950	1 450	380

AKROTIRI MIPS

TAC to ILS/DME Rwy 28