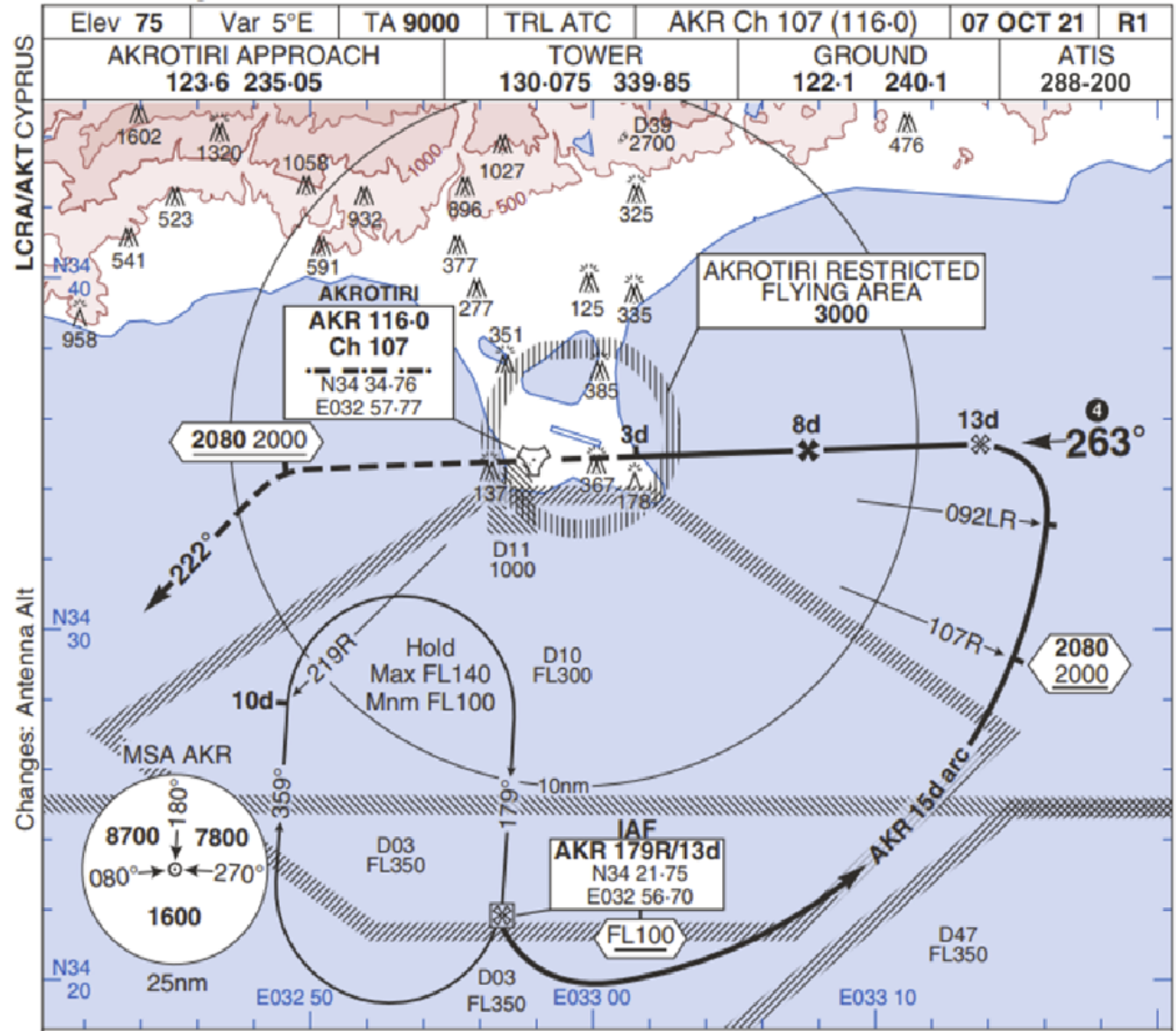


TAC Rwy 28

AKROTIRI



Ahead on Tr 263° to 2080 2000 ; then left on Tr 222°, climb as directed. MAPt at 3d.

MAP terminates at 15d AKR.

Rwy QFU 283°

THR Elev 74/3hPa

CAT	TAC ②	CIRC ⑤	DME AKR				
			500 430	8	13	1780	1700
A	500 430	680 610				7	1780
B	1300m	2000m				6	1460
C	780 710	3300m				5	1140
D	2600m	3600m				4	820
E	1380 1310	5000m					750
GS (kt)		80 120 150 180 210					
FAF-MAPt 5nm		3:45 2:30 2:00 1:40 1:26					
ROD (fpm)		3° 420 640 800 950 1110					

No1 AIDU Last Amended 09 AUG 21

© UK MOD Crown Copyright 2021. No1 AIDU is not responsible for, and claims no right to, the content or accuracy of 3rd party documents/information.

AKROTIRI MIPS

TAC Rwy 28

- WARNING.** No RT acct. TACAN Rwy 28 not approved due to overlap with LC D03.
- If ALS inop increase vis Cat ABCD by 700m.
- Hold entry **restricted** to along 179R outbd. Inbd turn limited by AKR 219R or inbd via AKR 219R/10d.
- FAT offset 20° right of RCL and intcp 1-1nm before THR.
- CIRC prohibited N of Rwy.
- Practice M/App procedures from TAC Rwy 28 are **prohibited**.
- At MAPt acct are to turn right then join visual CCT.
- DME AKR reads 2d at THR.