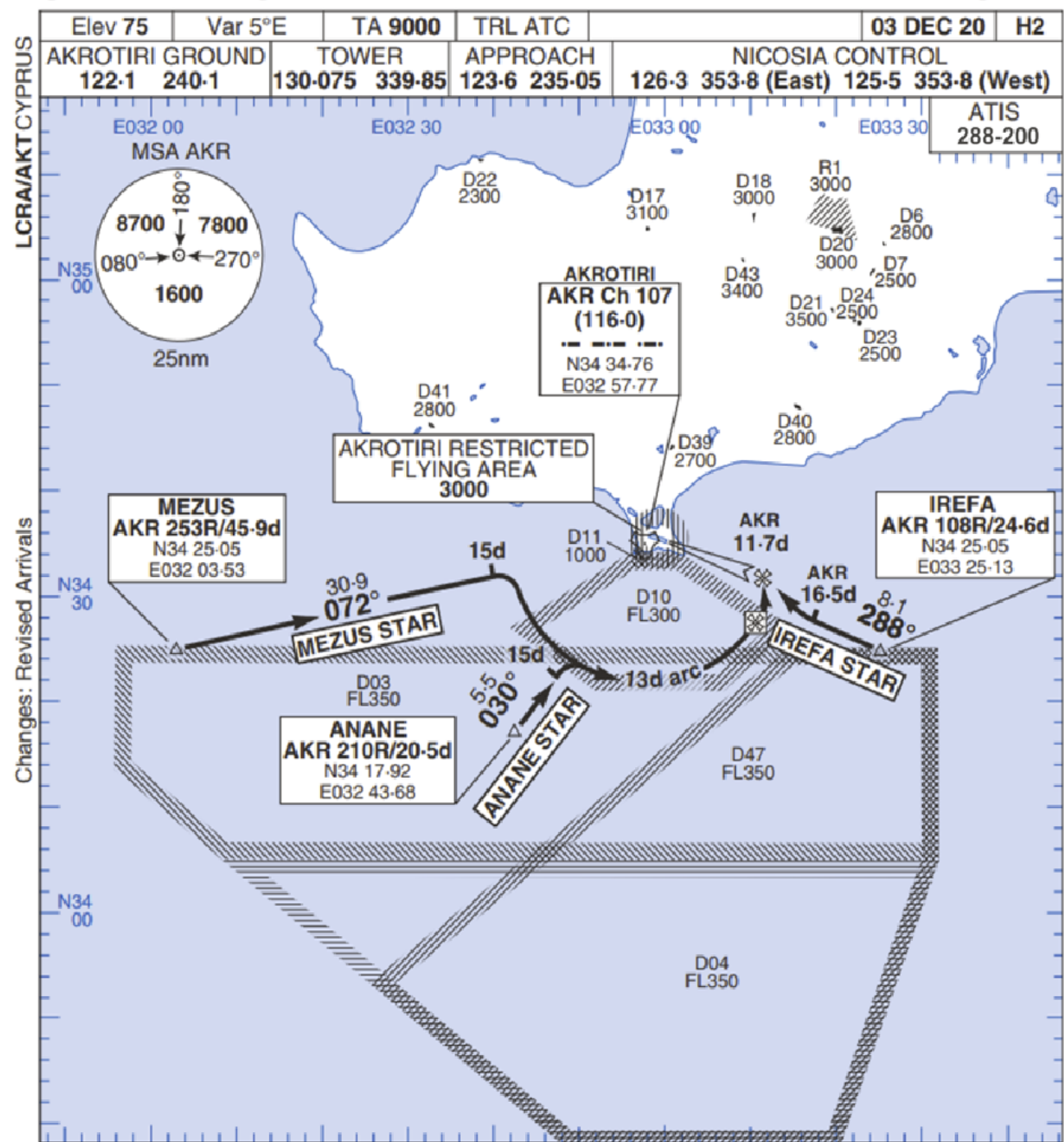


STAR BRAVO

AKROTIRI



Changes: Revised Arrivals

No1 AIDU Last Amended 06 OCT 20

1. Whenever possible and when range activity permits, AKROTIRI APPROACH will co-ordinate a direct track approach to AKROTIRI.
2. Subject to serviceability of SRE, arrivals are radar monitored except ILS which is unmonitored.
3. Subject to RT capability and NICOSIA ATCC, initial contact with AKROTIRI APPROACH is before 50nm range.
4. UK military acft are not to overfly Cyprus or approach within 5nm of the coast unless in the AKROTIRI traffic patterns or if specifically authorised (LCP 24).

STAR	ROUTEING (Including Mnm Noise Routes)
MEZUS BRAVO	From MEZUS, follow AKR 072° to 15d then turn right to intcp AKR 13d arc to commence TAC to ILS approach.
ANANE BRAVO	From ANANE, follow AKR 030° to 15d then turn right to intcp AKR 13d arc to commence TAC to ILS approach.
IREFA BRAVO	From IREFA, follow AKR 288° to 16-5d then turn right to intcp ILS IF AKR 103R/11-7d to commence ILS approach.

AKROTIRI
MIPS

STAR BRAVO

© UK MOD Crown Copyright 2020. No1 AIDU is not responsible for, and claims no right to, the content or accuracy of 3rd party documents/information.