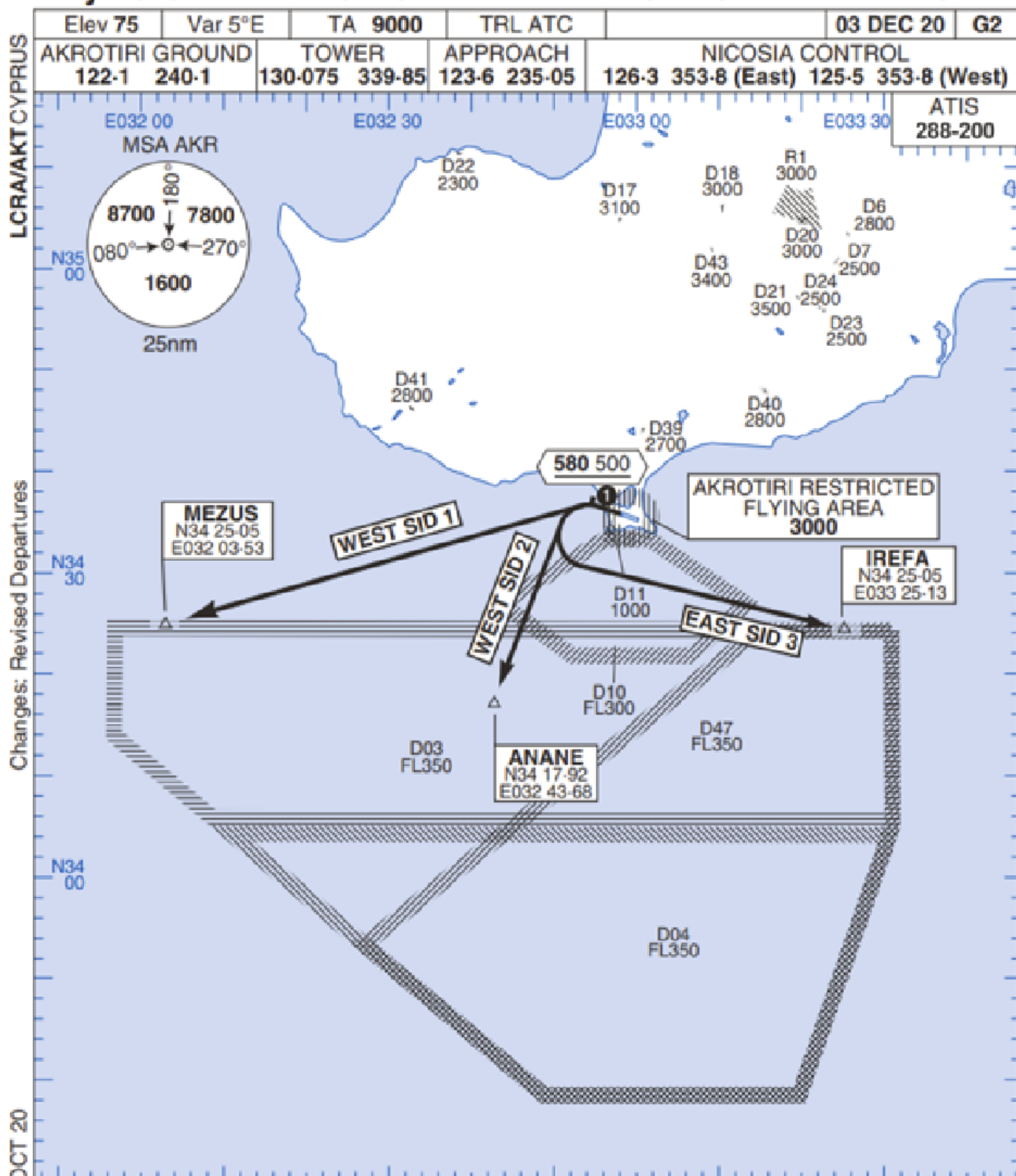


# Rwy 28 OMNIDIRECTIONAL DEPARTURES

# AKROTIRI



Changes: Revised Departures

No1 AIDU Last Amended 06 OCT 20

© UK MOD Crown Copyright 2020. No1 AIDU is not responsible for, and claims no right to, the content or accuracy of 3rd party documents/information.

- 1. Minimum climb gradient 7% to 580 500 for obstacle and operational purposes.
- 2. No turns before DER.
- 3. Turns to north of Rwy prohibited.
- 4. Acft unable to locate MEZUS/ANANE/IREFA should request radar vectors from ATC.

SID	RWY	ROUTEING (Including Mnm Noise Routes)
WEST SID 1	28 283°M	Ahead on Rwy Tr to 580 500, turn left direct to MEZUS. SID terminates at 9000.
WEST SID 2		Ahead on Rwy Tr to 580 500, turn left direct to ANANE. SID terminates at 9000.
EAST SID 3		Ahead on Rwy Tr to 580 500, turn left direct to IREFA. SID terminates at 9000.