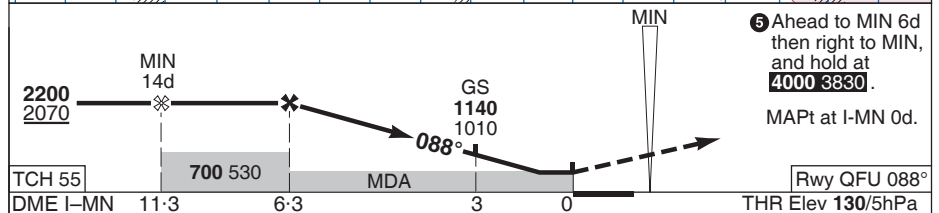
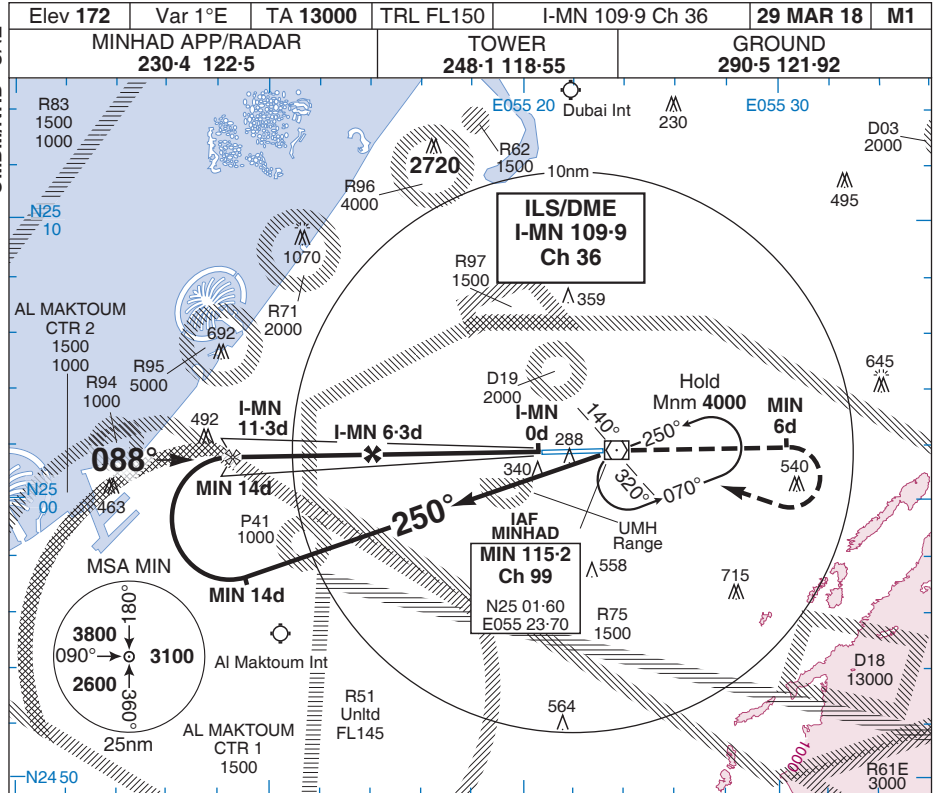


# ILS/DME Z Rwy 09

# DUBAI/Minhad

OMDM/NHD-UAE



5 Ahead to MIN 6d then right to MIN, and hold at **4000 3830**.  
MAPt at I-MN 0d.

DME I-MN		LOC CDFA		CIRC		DME I-MN	ALT HGT	
CAT	ILS ②	LOC CDFA		CIRC				
A	340 210 550m	500 370 1700m		770 600 2300m		6	2090 1960	
B				770 600 2400m		5	1770 1640	
C		500 370 1900m		960 790 4300m		4	1450 1320	
D				1060 890 4900m		3	1140 1010	
E						2	810 680	
GS (kt)		80	120	150	180	210	1	500 370
FAF-MAPt 6-3nm		4:45	3:09	2:31	2:06	1:48		
ROD (fpm)		3°	420	640	800	950	1110	

- CAUTION. LOC MDA/H referenced to THR elev.
- When ALS inop increase min vis ILS to 1200m, LOC Cat AB to 2400m, Cat CDE to 2600m.
- When circling N of AD, remain within 3nm.
- DME I-MN reads zero at Rwy 09 THR.
- M/App requires 2-6% climb grad. (ATC).
- Procedure speed limit 210kt.
- Timing **Not Auth** for defining MAPt.
- No turn before MAPt.