

# AERODROME

# DUBAI/Minhad

Elev 172 Var 1°E ARP N25 01-61 E055 21-98 (WGS 84) 15 AUG 19 D1

MINHAD GROUND  
290-5 121-92

TOWER  
248-1 118-55

APP/RADAR  
230-4 122-5

E055 21

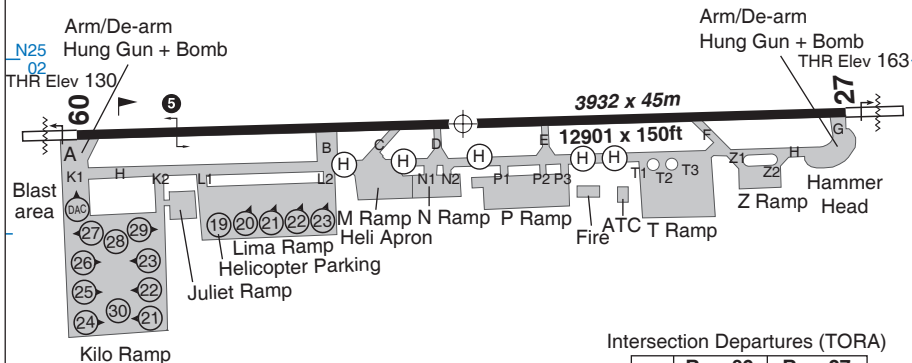
E055 22

MONKEY (UK Air Ops)  
243-4

ATIS (Dubai Int.)  
131-7

E055 23

**THRESHOLD COORDINATES**  
Rwy 09 - N25 01-59 E055 20-80  
Rwy 27 - N25 01-63 E055 23-15



Intersection Departures (TORA)

Twy	Rwy 09 (ft)	Rwy 27 (ft)
B	9842	3280
C	7874	5249
D	6889	6233
E	4921	8202
F	2296	10826

- CAUTION.** Minhad aeronautical data and procedures are not sourced from State AIP.
- CAUTION.** Obsolete Rwy 27 displaced THR markings remain following completion of Rwy works.
- CAUTION.** Non-standard rwy markings, Assault Landing Zone (ALZ), Rwy 09/27 within the first 3500ft. The ALZ THR is 300ft from Rwy THR and 90ft wide.
- Rwy 09/27. Prior to TKOF taxi forward 500ft to avoid damage to barrier net.
- BAK14 cable is set 420m (1337ft) from Rwy 09 THR.
- Inbd IFR acft are advised to establish contact with Minhad Twr prior to descending below 3000 to obtain traffic info for deconfliction purposes.
- Migratory bird hazard exists, particularly during late summer and Autumn seasons.
- Helis transiting VFR to/from Minhad through the Jumeirah Mandatory Broadcast Zones (MBZ) should broadcast deconfliction information on 134-65. For further information consult Dubai International AIP VFR Chart - ICAO VFR Routes Dubai CTR (AIP Charts OMDb AD-2-91 and ENR 2.2).

RWY	SLOPE	LDA m/ft	APP LGT		RWY LGT
09(089°T) 27(269°T)	0-25%U 0-25%D	3932/12901	P3°	CAT 1	HIRL:RTHL:REDL:RENL