

AL DHAFRA, UNITED ARAB EMIRATES

# VOR/DME RWY 31L

AL DHAFRA (OMAM)

VORTAC MA <b>114.9</b> Chan <b>96</b>	APCH CRS <b>319°</b>	Rwy ldg <b>12,012</b> THRE <b>52</b> Arprt Elev <b>52</b>
---	-------------------------	---

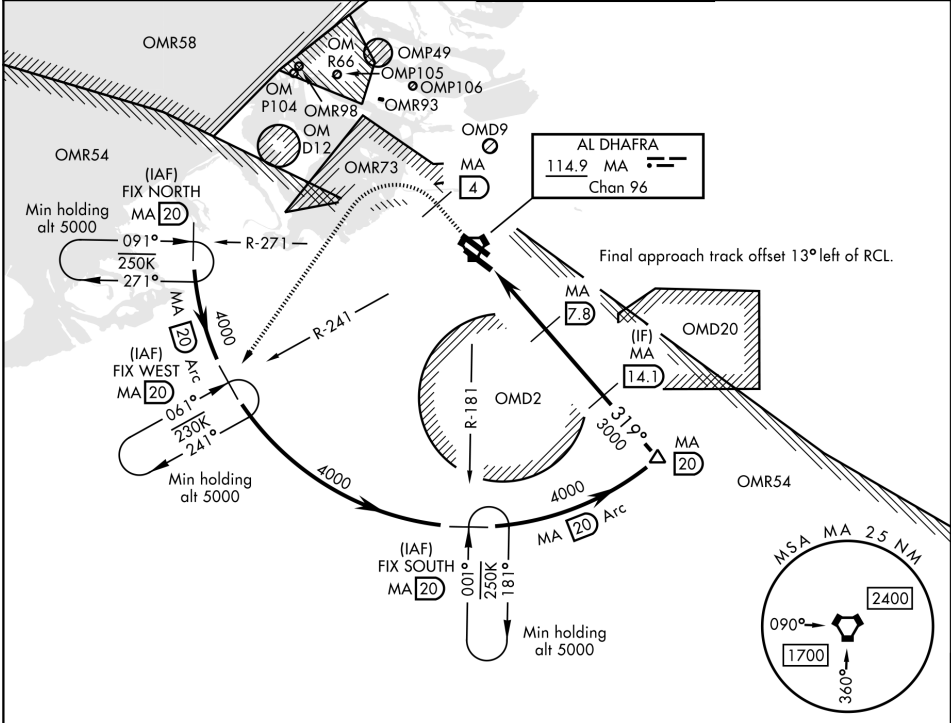
476 vFG

\* When ALS inop, increase vis CAT AB to 3300m, CAT CDE vis to 3500m.  
\*\* Circling not authorized Northeast of airport.

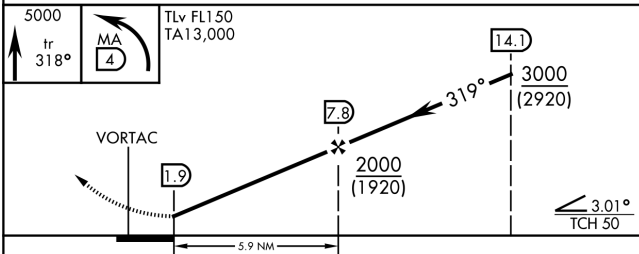
ALSF-2

MISSED APPROACH: Climb to 5000 (4920) track 319°. Passing MA VORTAC 4 DME turn left direct FIX WEST and hold. No turn before MAP.

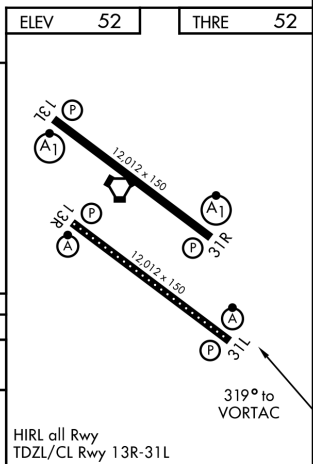
ATIS ★ <b>258.2</b>	ABU DHABI APP CON <b>124.4 270.0</b>	TOWER ★ <b>126.6 251.1 39.5</b>	GND CON <b>122.15 240.9</b>
------------------------	---	------------------------------------	--------------------------------



## RADAR and DME REQUIRED



CATEGORY	A	B	C	D	E
S-31*	600-2500m 540 (600-2500m)		600-2700m	540	(600-2700m)
CIRCLING**	630-2700m 553 (600-2700m)		760-3700m 683 (700-3700m)	780-3800m 703 (800-3800m)	870-4400m 793 (800-4400m)



AL DHAFRA, UNITED ARAB EMIRATES

24° 14' N-54° 33' E

AL DHAFRA (OMAM)

# VOR/DME RWY 31L

EEA, 1 DEC 2015 to 30 NOV 2016

EEA, 1 DEC 2015 to 30 NOV 2016