

LAS VEGAS, NEVADA

TACAN X RWY 21L

TACAN LSV Chan 12	APCH CRS 210°
-------------------	---------------

Rwy ldg	21L	21R
TDZE	10,051	10,120
Arprt Elev	1865	1869

AL-227 (USAF)

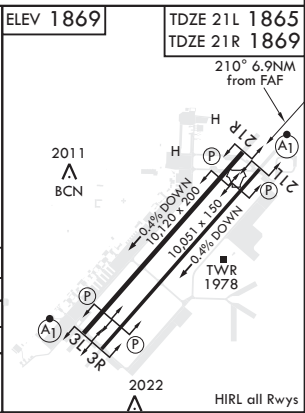
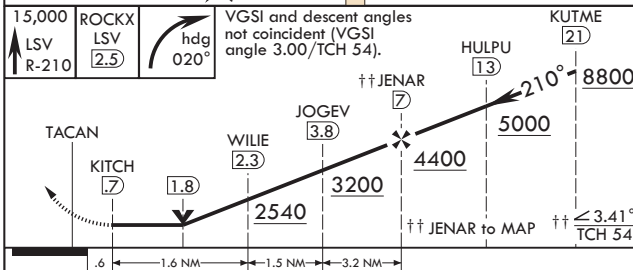
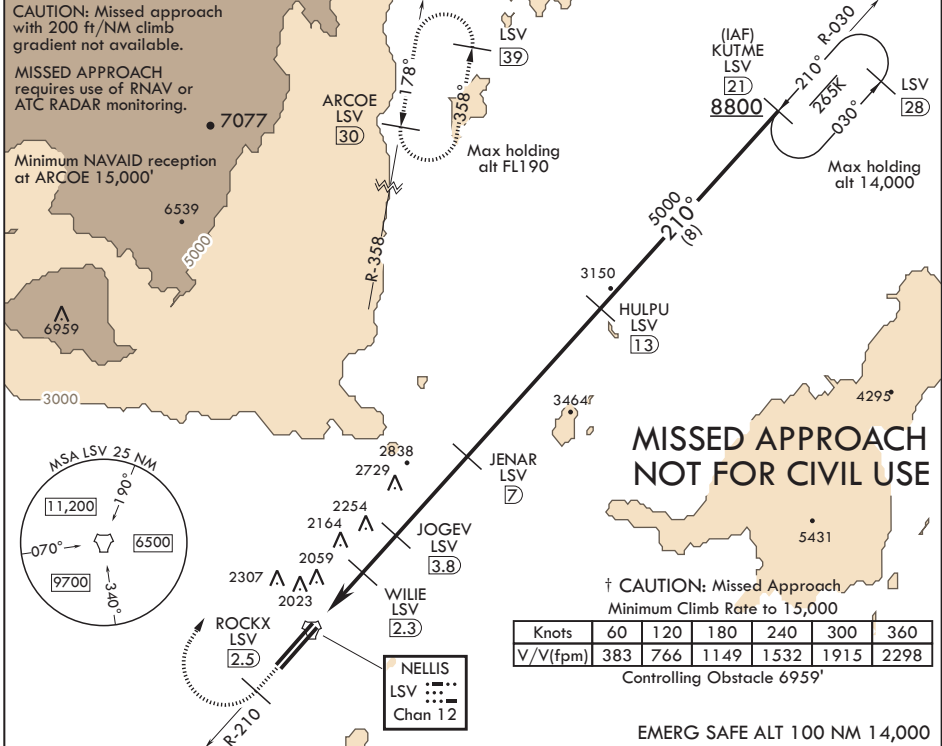
NELLIS AFB (KLSV)

⚠ * When ALS inop, increase CAT AB RVR to 55, vis to 1 mile, CAT CDE vis to 1 3/4 miles.
 ** Circling not authorized E of Rwy 3R-21L.



† MISSED APPROACH: Climb to 15,000, intercept LSV TACAN R-210 to 2.5 DME (ROCKX), then climbing right turn heading 020° to join LSV TACAN R-358 to ARCOE and hold, continue climb in hold to 15,000. Missed approach not for civil use.

ATIS 270.1	APP CON 124.95 273.55	TOWER 132.55 327.0	GND CON 121.8 275.8	CLNC DEL 120.9 289.4
------------	-----------------------	--------------------	---------------------	----------------------



CATEGORY	A	B	C	D	E
S-21L*	2460/24 595 (600-1/2)		2460-1 1/4 595 (600-1 1/4)		
SIDESTEP 21R	2460-1 591 (600-1)		2460-1 3/4 591 (600-1 3/4)		
C CIRCLING**	2460-1 591 (600-1)	2620-1 751 (800-1)	2620-2 1/4 751 (800-2 1/4)	2840-3 971 (1000-3)	3040-3 1171 (1200-3)

LAS VEGAS, NEVADA
 Amdt 8 05DEC19

36°14'N - 115°02'W

NELLIS AFB (KLSV)

TACAN X RWY 21L

SW-4, 05 DEC 2019 to 02 JAN 2020

SW-4, 05 DEC 2019 to 02 JAN 2020