

# TACAN RWY 21L

TACAN LSV Chan 12	APCH CRS 207°	Rwy Idg 10,055 TDZE 1866 Arprt Elev 1870
----------------------	------------------	--

AL-227 [USAF]

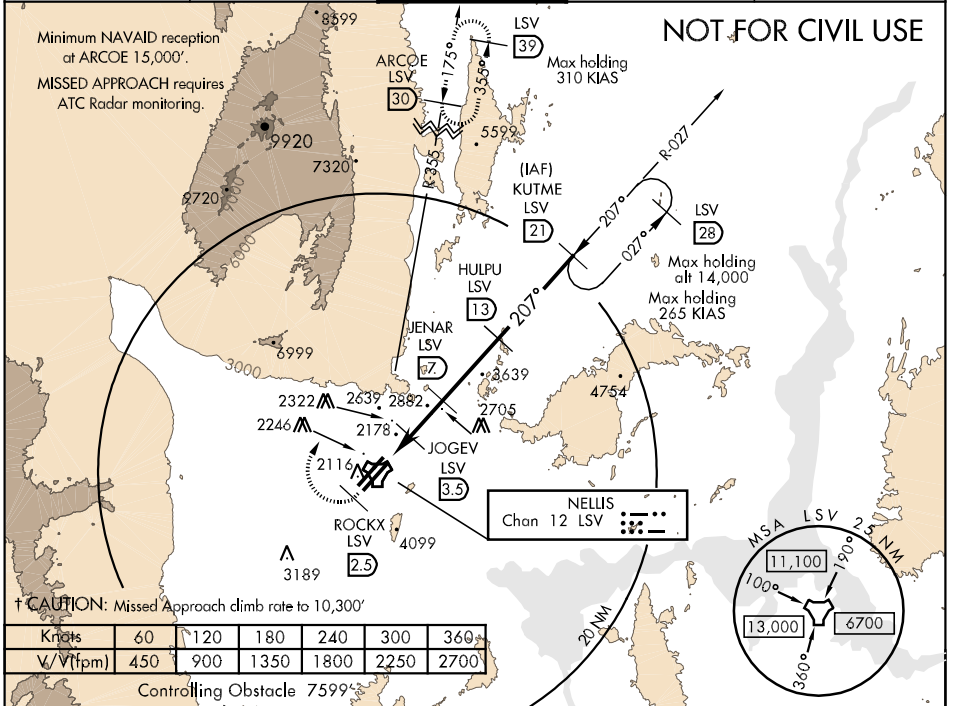
NELLIS AFB (KLSV)

▼ \* When ALS inop, increase CAT AB RVR to 50, vis to 1 mile, CAT C vis to 1¼ miles, CAT D vis to 2 miles, CAT E vis to 2½ miles.  
 \*\* Circling not authorized E of Rwy 3R-21L.

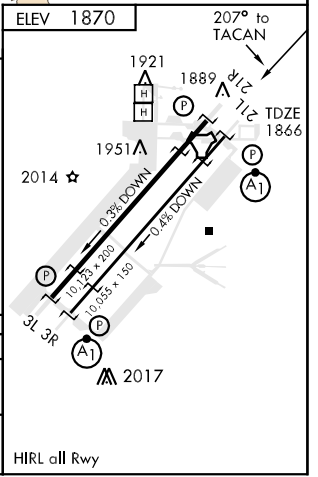
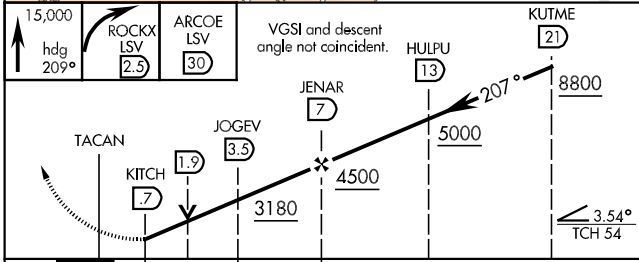


† MISSED APPROACH: Climb to 15,000, heading 209° to 2.5 DME (ROCKX), then climbing right turn heading 020° to join LSV TACAN R-355 to ARCOE and hold, continue climb in hold to 15,000.

ATIS 270.1	NELLIS APP CON 124.95 273.55	NELLIS TOWER 132.55 327.0	GND CON 121.8 275.8	CINC DEL 120.9 289.4
---------------	---------------------------------	------------------------------	------------------------	-------------------------



† CAUTION: Missed Approach climb rate to 10,300'



CATEGORY	A	B	C	D	E
S-21L *	2480/24 614 (700-½)		2480/60 614 (700-1¼)	2480-1½ 614 (700-1½)	2480-1¾ 614 (700-1¾)
CIRCLING **	2480-1 610 (700-1)	2680-1¼ 810 (900-1¼)	2680-2¼ 810 (900-2¼)	2680-2½ 810 (900-2½)	2940-3 1070(1100-3)

# TACAN RWY 21L

SW-4, 23 SEP 2010 to 21 OCT 2010

SW-4, 23 SEP 2010 to 21 OCT 2010