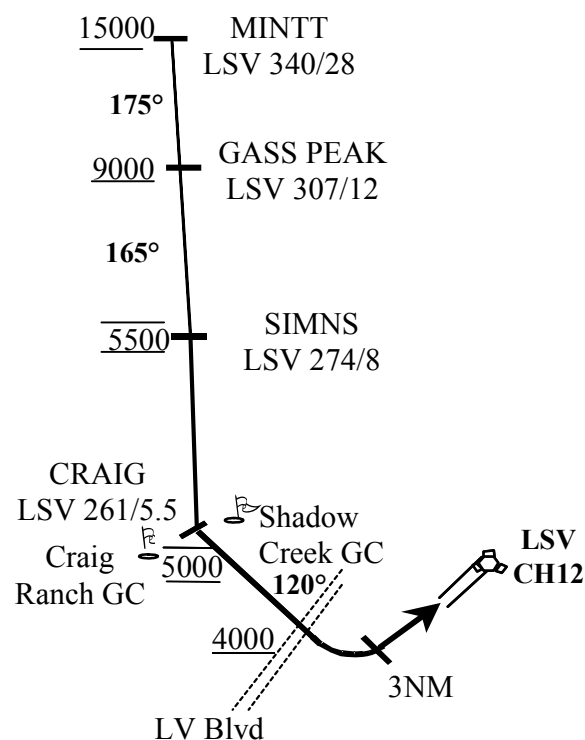


**CONTENT OF THIS PUBLICATION HAS BEEN APPROVED
BY
99 ABW/CC**

FIGURE 4.10. MINTT RECOVERY (NOT FOR USE IN IMC).
FOR USE UNDER VMC ONLY
PILOT IS RESPONSIBLE FOR TERRAIN/OBSTACLE AVOIDANCE



OVERHEAD:

- Cross MINTT at or above 15,000 feet MSL, direct GASS PEAK
- Cross GASS PEAK at or above 9,000 feet MSL
- Cross SIMNS at 5,500 feet MSL
- Cross CRAIG at 5,000 feet MSL; Report CRAIG to Tower
- Cross Las Vegas Blvd at or above 4,000 feet MSL, then to 3,500 feet MSL for initial
- Remain within 4 DME of LSV on turn to initial

VFR STRAIGHT-IN:

- Depart CRAIG and descend to be at 3,000 feet MSL by Las Vegas Blvd
- Do not descend below 3,000 feet MSL until within 5 DME of LSV or 4 NM of the runway, remain within 4 DME of LSV on turn to final