

HI-TACAN Y RWY 21L

TACAN LSV Chan 12	APCH CRS 210°	Rwy ldg 21L TDZE 1865 Arprt Elev 1869	Rwy ldg 21R TDZE 1869
----------------------	------------------	---	--------------------------

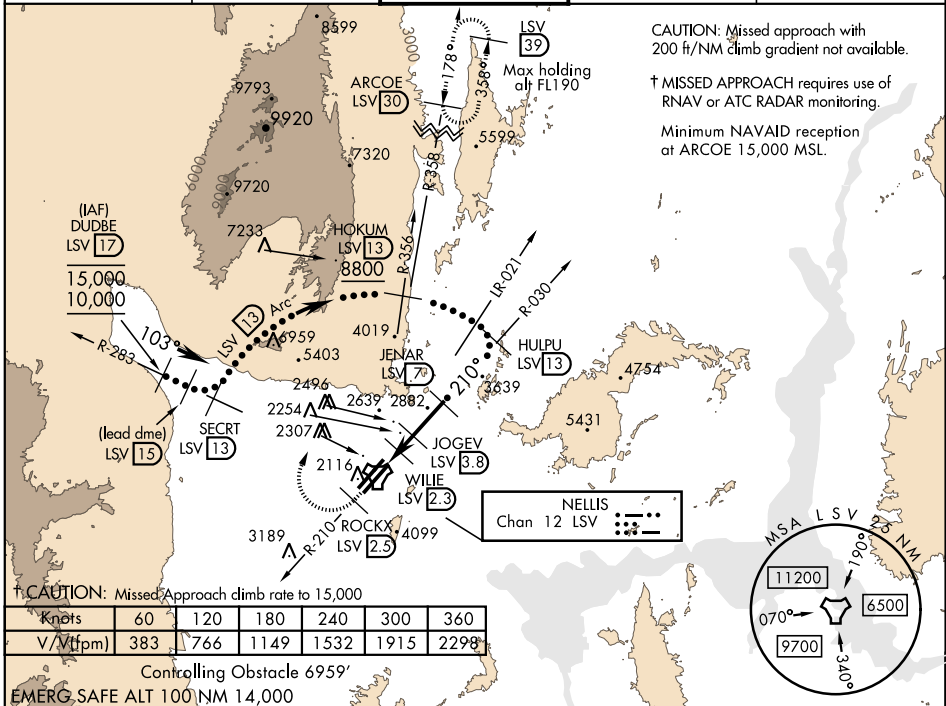
JAL-227 [USAF] NELLIS AFB (KLSV)

* When ALS inop, increase CAT CDE vis to 1 3/4 miles.
 ** Circling not authorized E of Rwy 3R-21L.



† MISSED APPROACH: Climb to 15,000, intercept LSV TACAN R-210 to 2.5 DME (ROCKX), then climbing right turn heading 020° to join LSV R-358 to ARCOE and hold, continue climb in hold to 15,000. Missed approach not for civil use.

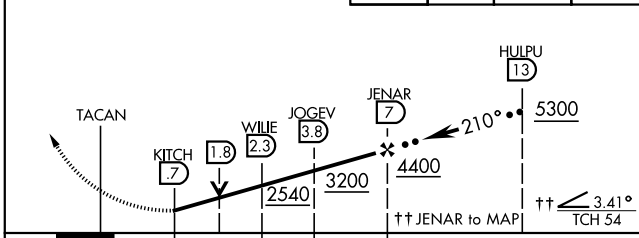
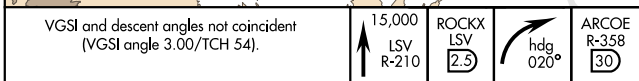
ATIS 270.1	NELLIS APP CON 124.95 273.55	NELLIS TOWER 132.55 327.0	GND CON 121.8 275.8	CLNC DEL 120.9 289.4
---------------	---------------------------------	------------------------------	------------------------	-------------------------



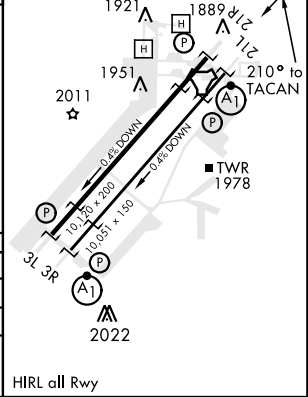
† CAUTION: Missed Approach climb rate to 15,000

Knots	60	120	180	240	300	360
V/Vt (fpm)	383	766	1149	1532	1915	2298

Controlling Obstacle 6959'
EMERG. SAFE ALT 100 NM 14,000



ELEV 1869	TDZE 21L 1865	TDZE 21R 1869
-----------	---------------	---------------



CATEGORY	C	D	E
S-21L *	2460-1 1/4	595 (600-1 1/4)	
SIDESTEP 21R	2460-1	591 (600-1)	
CIRCLING **	2620-2 1/4 751 (800-2 1/4)	2840-3 971 (1000-3)	3040-3 1171 (1200-3)

HIRL all Rwy

HI-TACAN Y RWY 21L

SW-4, 05 DEC 2019 to 02 JAN 2020

SW-4, 05 DEC 2019 to 02 JAN 2020