

LAS VEGAS, NEVADA

HI-TACAN RWY 3R

TACAN LSV Chan 12	APCH CRS 029°	Rwy ldg 10,051
		TDZE 1833
		Arprt Elev 1869

JAL-227 (USAF)

NELLIS AFB (KLSV)

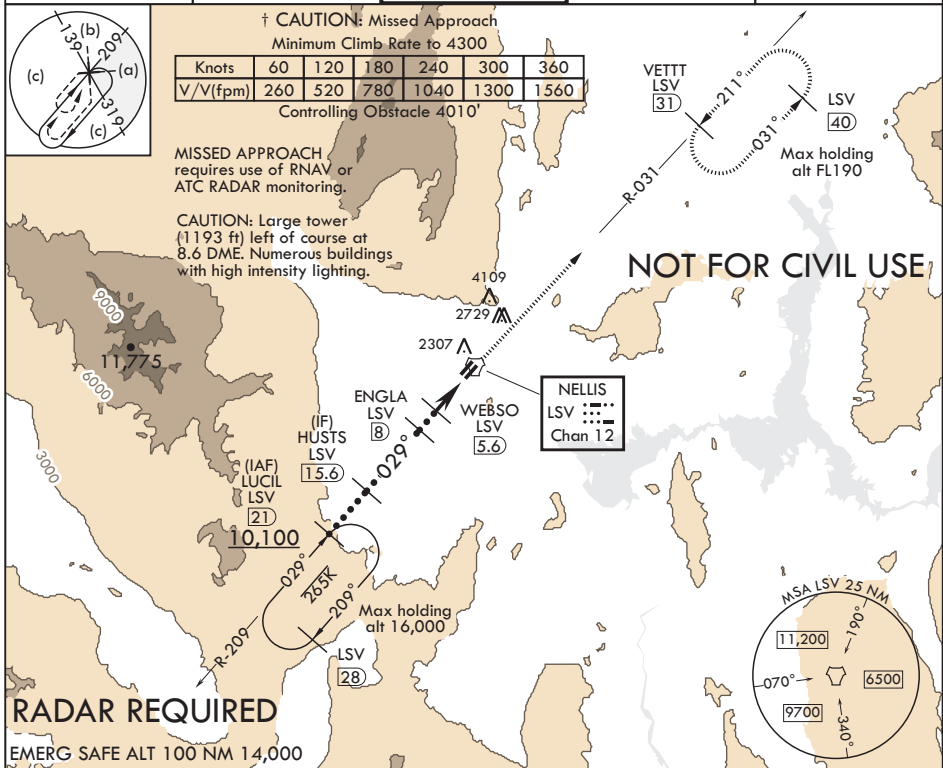
⚠ * When ALS inop, increase CAT CDE vis to 2 1/2 miles.
 ** When ALS inop, increase CAT CDE vis to 1 3/8 miles.
 *** Circling not authorized E of Rwy 3R-21L.

ALSF-1



MISSED APPROACH: Climb to 9000 on LSV TACAN R-031 to VETT and hold, continue climb in hold to 9000.

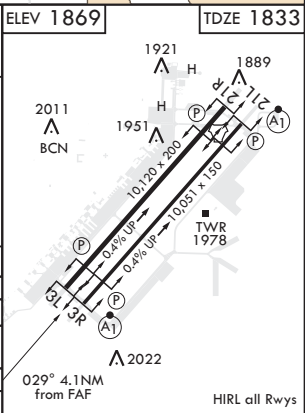
ATIS 270.1	APP CON 124.95 273.55	TOWER 132.55 327.0	GND CON 121.8 275.8	CLNC DEL 120.9 289.4
---------------	--------------------------	-----------------------	------------------------	-------------------------



SW-4, 05 DEC 2019 to 02 JAN 2020

SW-4, 05 DEC 2019 to 02 JAN 2020

LUCIL [21]	HUSTS [15.6]	ENGLA [8]	WEBSO [5.6]	TACAN	9000 LSV R-031	VETT LSV [31]	ELEV 1869	TDZE 1833
10,100	6300	3900	3200					
3.04° ≥ TCH 53		3.6 NM		.5				
CATEGORY	C	D	E					
S-3R*	2740-2	907	(900-2)					
☑ CIRCLING***	2740-2½ 871 (900-2½)	2840-3 971 (1000-3)	3040-3 1171 (1200-3)					
† BELOW MINIMA REQUIRES MISSED APPROACH CLIMB GRADIENT								
S-3R**	2280/45	447	(500-¾)					



LAS VEGAS, NEVADA

36°14'N - 115°02'W

NELLIS AFB (KLSV)

Amdt 8 05DEC19

HI-TACAN RWY 3R