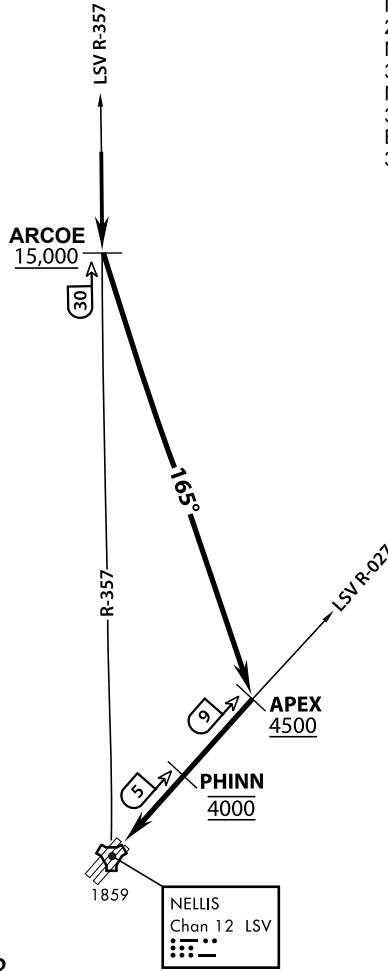


ATIS  
 270.100  
 NELLIS GROUND  
 275.800  
 NELLIS TOWER  
 327.000  
 NELLIS CONTROL  
 317.525  
 BLACKJACK  
 377.800



# VMC ONLY

PILOT RESPONSIBLE FOR  
TERRAIN AVOIDANCE

## APPROACH ROUTE DESCRIPTION

### OVERHEAD

Cross ARCOE at or above 15,000 MSL, then heading 165° to APEX.  
 Cross APEX at or above 4,500 MSL, report to tower.  
 Cross PHINN (LSV 027/5) at 4,000 MSL then descend to 3,500 MSL for Initial.

### VFR STRAIGHT IN RWY 21

Cross APEX at 4,000 feet MSL. Descend to be at 3,000 feet MSL at PHINN (LSV 027/5).