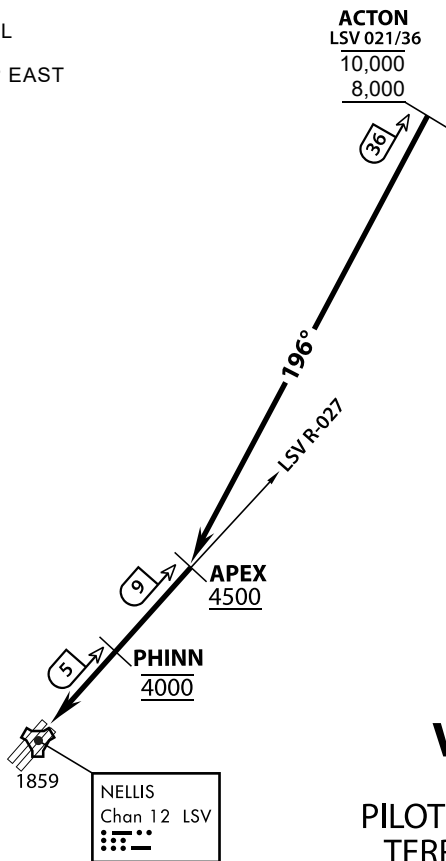
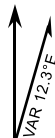


ATIS  
 270.100  
 NELLIS GROUND  
 275.800  
 NELLIS TOWER  
 327.000  
 NELLIS CONTROL  
 317.525  
 NELLIS DEP/APP EAST  
 384.400  
 BLACKJACK  
 377.800



**VMC ONLY**

**PILOT RESPONSIBLE FOR  
TERRAIN AVOIDANCE**

**▼ APPROACH ROUTE DESCRIPTION**

Depart ACTON between 8,000 and 10,000 MSL heading 196° direct APEX

**OVERHEAD**

Cross APEX at or above 4,500 feet MSL, then direct Initial.

Cross PHINN (LSV 027/5) at 4,000 feet MSL. Descend to 3,500 MSL for Initial.

**VFR STRAIGHT IN RWY 21**

Cross APEX at 4,000 feet MSL. Descend to be at 3,000 feet MSL at PHINN (LSV 027/5).

**NOTE** If unable to maintain VMC,  
request IFR clearance for radar vectors to instrument approach.