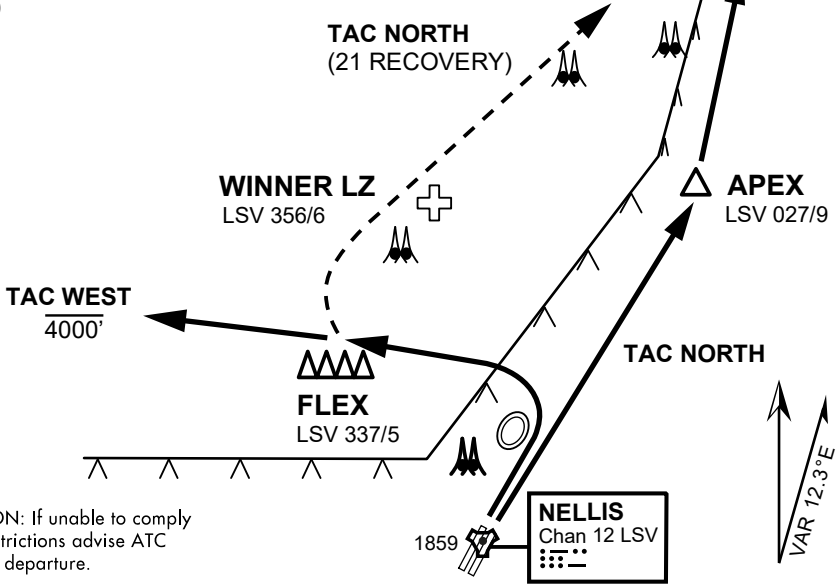


ATIS
270.100
NELLIS GROUND
275.800
NELLIS TOWER
327.000
NELLIS CONTROL
317.525
NELLIS DEP/APP EAST
384.400
BLACKJACK
377.800

VMC ONLY

PILOT RESPONSIBLE FOR
TERRAIN AVOIDANCE

DRY LAKE
LSV 017/15



CAUTION: If unable to comply with restrictions advise ATC prior to departure.



DEPARTURE ROUTE DESCRIPTION

- Tac North / Tac West departures only flown during daylight from RWY 03
- Use caution for helicopters operating 3 Nm NE of FLEX (Winner LZ).
- Flights will remain at 500' AGL until deconflicted with helicopter traffic.
- Upon reaching FLEX or Dry Lake maintain VFR, remain clear of Class B airspace, and switch frequency to coordinate for range entry.

TAC NORTH

- Proceed direct APEX then direct Dry Lake. Report "APEX" informing ATC flight will clear Class B in 3Nm enroute to Dry Lake.
- For opposite direction takeoffs when RWY 21 is the active, proceed to FLEX then to Dry Lake.
- Report "FLEX" to inform ATC flight is clear of Class B airspace. Use caution for helicopter training.

TAC WEST:

- Proceed to FLEX. Report "FLEX" to inform ATC flight is clear of Class B airspace. Remain below 4000' MSL until north of Gass Peak.