

ATIS
 270.100
 NELLIS GROUND
 275.800
 NELLIS TOWER
 327.000
 NELLIS CONTROL
 317.525
 NELLIS DEP/APP EAST
 384.400
 BLACKJACK
 377.800

VMC ONLY

PILOT RESPONSIBLE FOR
TERRAIN AVOIDANCE

CAUTION: If unable to comply with restrictions advise ATC prior to departure.

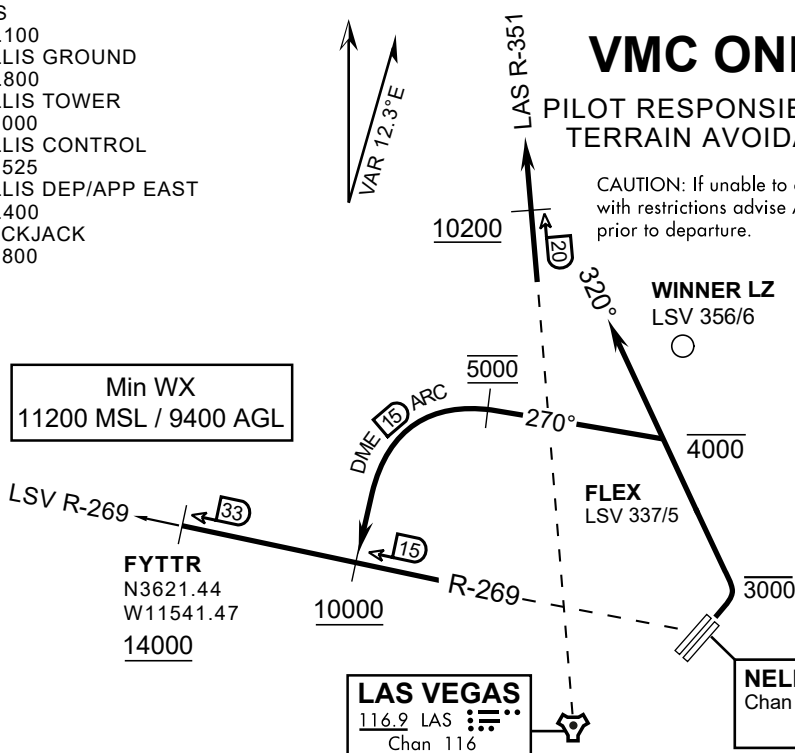
WINNER LZ
 LSV 356/6

FLEX
 LSV 337/5

NELLIS
 Chan 12 LSV

LAS VEGAS
 116.9 LAS
 Chan 116

Min WX
 11200 MSL / 9400 AGL



▼ Request from GROUND prior to Taxi and APVD by TWR prior to TAKEOFF

1. Used for RWY 03 departures regardless of active runway to expedite the departure movement.
2. ATC may initiate to apply Simultaneous Opposite Direction Operations (SODO) when filed on FYTTR TWO or DREAM THREE and arrivals are landing RWY21.
3. ATC/aircrew may initiate to provide quick turn out to FYTTR TWO when departing RWY 03.
4. Procedure is VFR to IFR. During VFR portion aircrews are responsible for terrain clearance.
CLASS B VFR separation services will be provided as appropriate.

FYTTR THREE:

1. Remain below 3000' MSL until north of Race Track and turned westbound
2. Turn left within 4NM of Nellis direct FLEX.
3. Fly north of FLEX at or below 4000' MSL and then heading 270°.
4. Intercept the LSV 15DME arc at or below 5000' MSL and arc south.
5. Intercept the LSV R-269/15 at or above 10,000' MSL and track outbound.
Aircrews are VFR until intercepting the LSV R-269 at or above 10,200' MSL.

DREAM FOUR:

1. Remain below 3000' MSL until north of Race Track
2. Fly north of FLEX at or below 4000' MSL and then heading 320°.
3. Intercept the LSV R-349 (Ch 116) and comply with DREAM THREE restrictions.
Aircrews are VFR until crossing the LSV R-349/20 at or above 10,200' MSL
4. If unable to comply with restrictions, maintain VFR and advise approach.
5. All FLEX Turnouts to the DREAM FOUR will comply with RWY 21 DREAM FOUR (intercept LAS R-351) outbound regardless of active runway.

FLEX TURNOUT 03 DEPARTURE AND TRANSITIONS