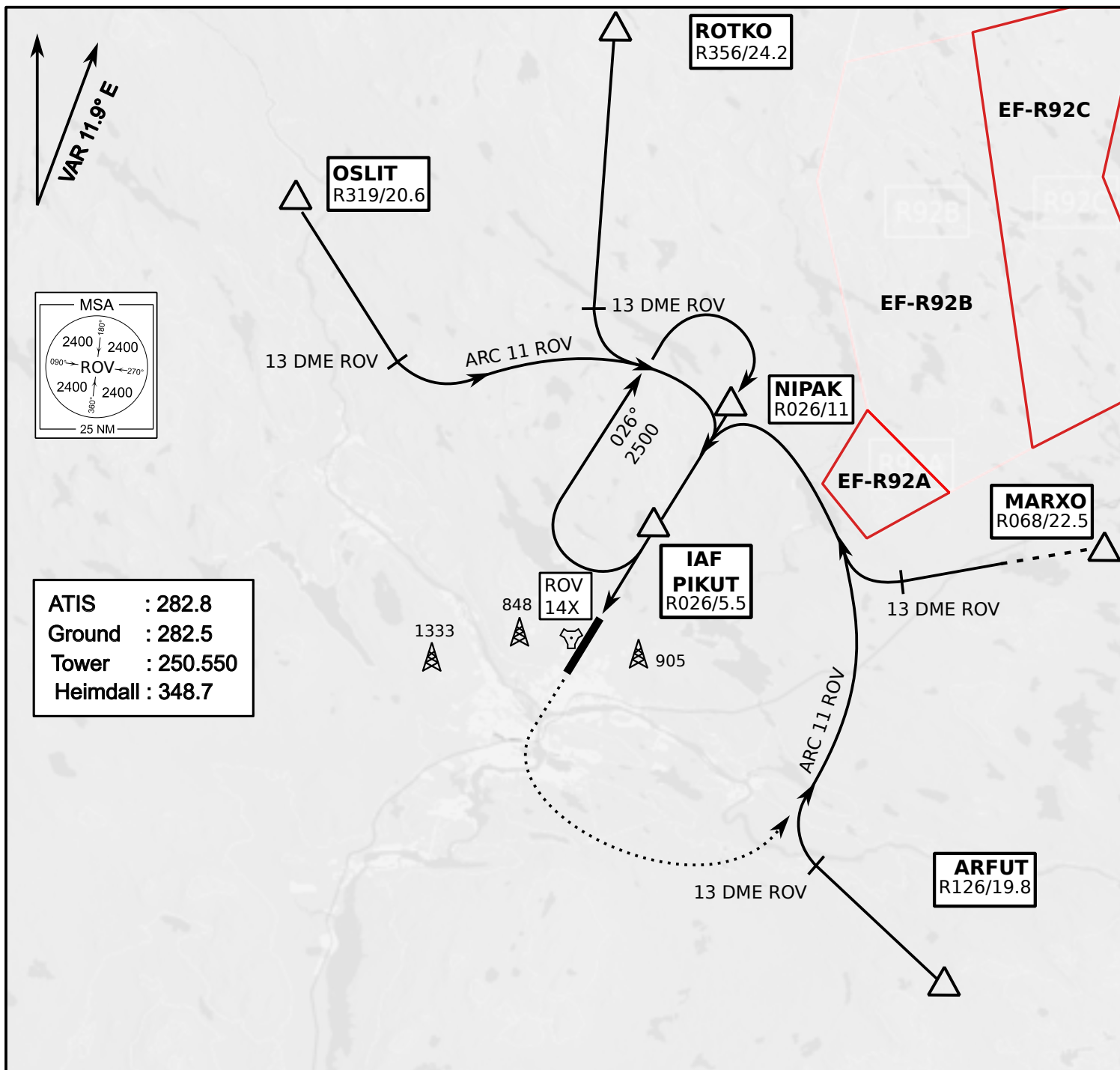


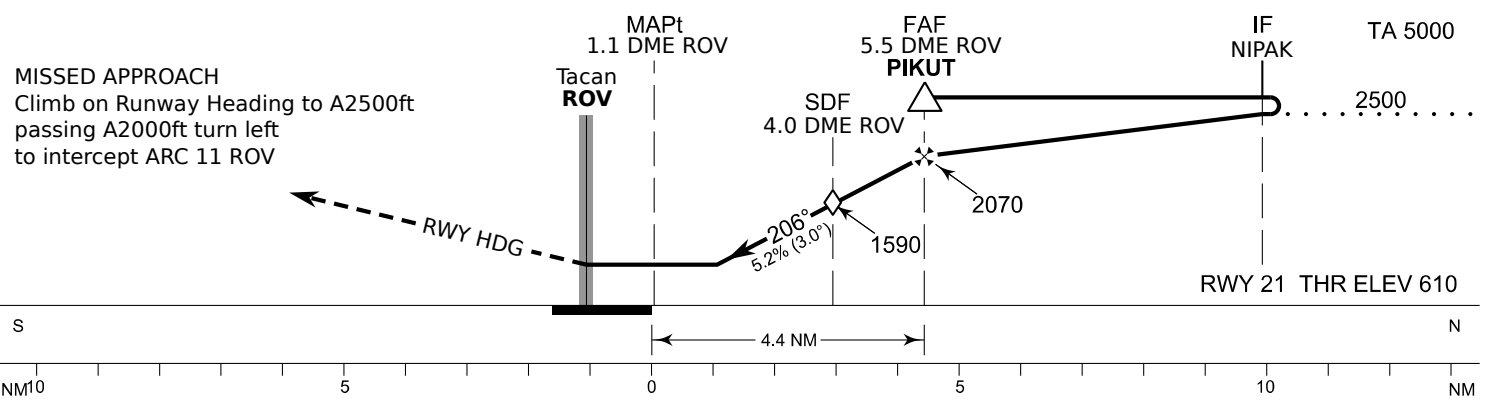
INSTRUMENT
APPROACH CHART

ELEV 643ft
HEIGHTS RELATED TO
THR RWY21 ELEV 610ft

Tacan RWY 21
ROVANIEMI AERODROME
ROVANIEMI, FINLAND



ATIS : 282.8
Ground : 282.5
Tower : 250.550
Heimdall : 348.7



OCA (H)	A	B	C	D
Tacan	1010 (400)			
Tacan WO SDF	1590 (980)			
Circling	1120 (470)	1150 (510)	1300 (660)	1340 (690)

Final Approach DIST	3.0 DME	4.0 DME	5.0 DME			
Altitude (Height)	1280 (670)	1590 (980)	1910 (1300)			
	kt	90	100	120	140	160
FAF - MAPt 4.4 NM	min:sec	2:56	2:38	2:12	1:53	1:39
Rate of descent	ft/min	480	530	640	740	850

Timing not authorized for defining the MAPt