

**MISSION DATA CARD**

OPORD		Callsign		Mission		Date/Time		
4291/2025		Cargo* 1		Training		281530DEC25		
Task						Freq		
AO						264.05		
Departure				Recovery				
SID RWY 03				none				
#	Callsign		Pilot		IFF	TCN	LSR	NET
-1	Cargo* 1-1		Meteor		1701	1Y	1701	

**LOADOUT**

A/A						GUN	
A/G						CHF	
POD						FLR	
TKS						FUEL	

**TOLD**

	Takeoff	Target	Joker	Bingo	Land
FUEL	43413				

**AIRBASES**

	Name	TCN	ATIS	GND	TWR	RWY	Elev	ILS
Dep	Rovaniemi	14X	282.8	282.5	250.55	21	643	111.7
Arr	Vidsel				250.4	29	597	109.5
Div	Kemi Tornio	106X			250.3	36	62	110.9

**FLIGHTPLAN**

#	Name	Navaid/Coords/DME	ALT	TOT
1	NEMGU	N66 20.400 E024 41.650	15000	
2	ITVAV	N66 44.630 E019 56.760	15000	

**SUPPORT****AWACS**

Callsign	Freq	ALT	Pos
HEIMDALL	348.7		

**RADIO CHANNELS**

#	Freq	Name
1		Flight/Squadron specific
2	282.8	Rovaniemi ATIS
3	282.5	Rovaniemi Ground
4	250.55	Rovaniemi Tower
5	320.7	Bodo ATIS
6	250.75	Bodo Tower
7	235.45	Kallax ATIS
8	250.3	Kallax Tower
9	265.0	Texaco-1   KC-135   Medium / Slow   71Y
10	319.8	Arco-1   KC-135   High / Fast   22Y
11	360.8	Shell-1   KC-135 MPRS   High / Fast   41Y
12	304.0	CVN-71 Rough Rider (RRR)   71X
13	303.0	LHA-1 Tarawa (TWA)   79X
14	247.8	S-3B Mauler-1 (MAU)  64Y
15	347.8	Loki (E-2D)
16	348.7	Heimdall (E-3A)
17	242.17	ESR02 - CAS Range Operator
18	34.7	ESR02 - JTAC Odin
19	270.5	Blue
20	270.75	Red

**RAMROD**

0	1	2	3	4	5	6	7	8	9
U	L	T	R	A	S	O	N	I	C

**KTC 1400 C**

	0	1	2	3	4	5	6	7	8	9
A	VCFD	TNS	UXI	OP	HL	MKG	BE	WJ	AQ	RY
B	YUEK	RWJ	MPO	LN	TI	GFD	BH	AC	XV	QS
C	TWJV	DAG	ERP	SB	XO	KIY	QF	LC	UH	MN
D	PDNU	KJL	MGI	TO	SA	FXR	EW	BY	VQ	HC
E	GDYJ	LPH	KBV	EW	QR	IOM	FT	US	XN	AC
F	JGWF	QKP	LMI	XE	BH	DNT	RS	YC	VA	OU
G	JPTY	LRH	EMS	XK	BA	IGV	UC	OF	DQ	WN
H	DBUG	CIP	KJW	ST	VH	RAE	NY	LO	FQ	XM
I	PUBM	KVJ	GNS	AX	WE	RYI	CQ	HO	FD	TL
J	TKYI	NFC	OJV	MA	GL	RQS	EW	UX	HB	DP
K	ECYU	MPI	TVG	BS	NO	XFW	AD	RQ	KL	JH
L	UBDN	SQW	CJM	HF	IO	PEG	YK	VL	XR	AT
M	RXLC	SBO	TFG	NA	HM	EPY	WK	UD	JI	QV
N	NOUV	XAF	WYG	RQ	DT	EBM	CH	SL	PI	KJ
O	QVUX	IPR	WBA	OT	MS	JYG	CK	HL	FE	ND
P	BLSU	HGO	CDQ	RJ	NF	PYA	TK	XV	MW	IE
Q	FUSY	PBM	RAL	XD	ON	KGQ	TH	VW	EJ	CI
R	TOFB	XGS	IQE	WU	PR	DNV	CA	LK	YH	MJ
S	HLBQ	UOR	MXW	IG	KC	DYN	EP	TF	JS	VA
T	SGJB	PKQ	AME	DI	CX	YUN	HF	WR	VL	TO
U	SECN	TOV	MYW	PQ	BG	LFU	AR	JK	DX	IH
V	NKWI	ERP	OVM	FY	GQ	HSC	UX	AD	TL	BJ
W	JEQH	BGM	DLU	RK	CA	OTI	VY	NF	PS	WX
X	AEOG	XYI	LCT	RQ	HW	VKN	SM	BF	JD	PU
Y	WYIL	ATP	VNX	GB	SJ	UCF	HD	RM	OE	KQ

**NAVAIDS**

Id	Name	Channel	Position	Elevation
BOO	Bodo	45	N67 15.838 E014 20.046	43
BNK	Banak	47	N70 03.937 E024 58.181	17
OYA	Andoya	28	N69 17.175 E016 08.658	19

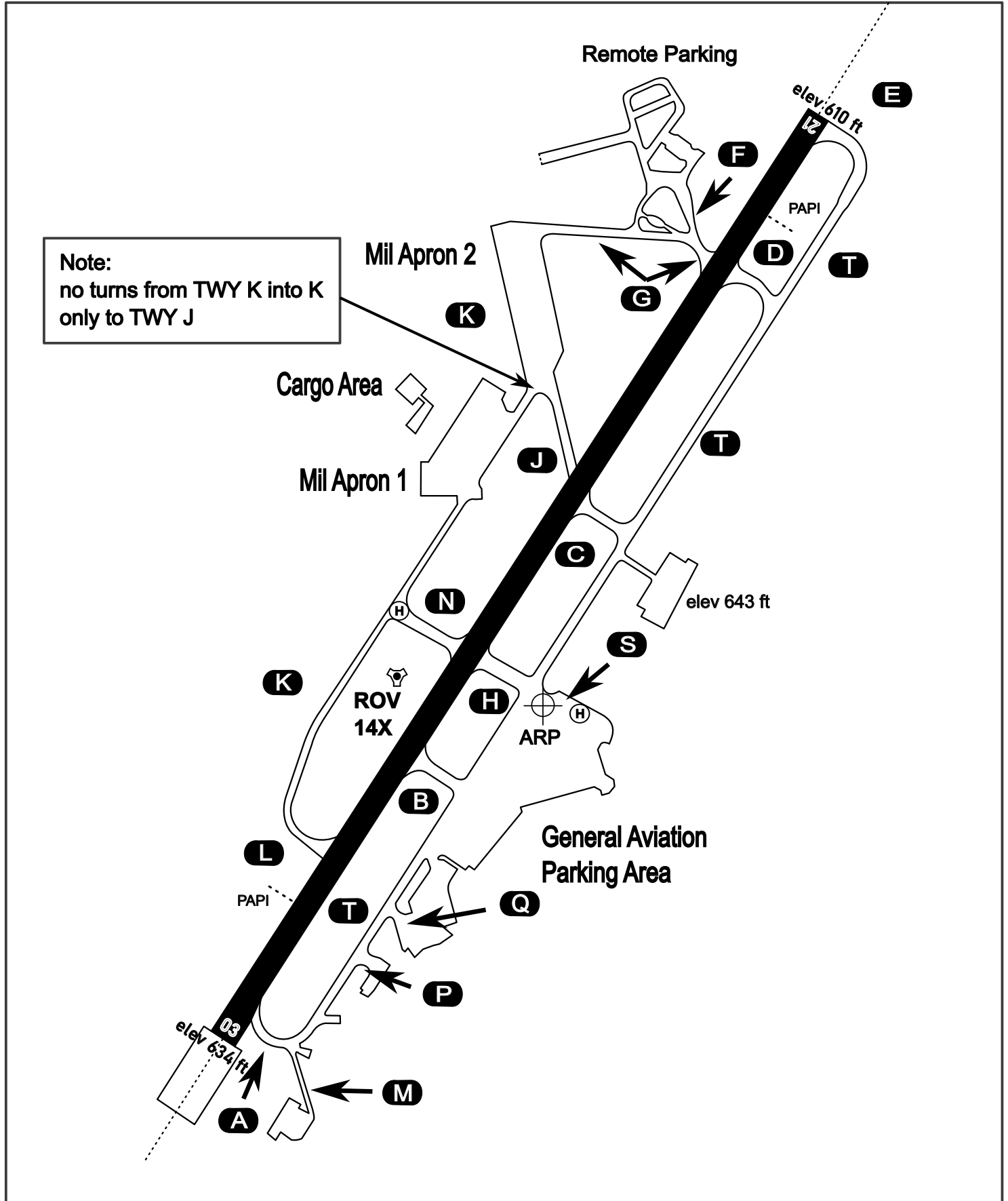
# AERODROME CHART

Rovaniemi Aerodrome

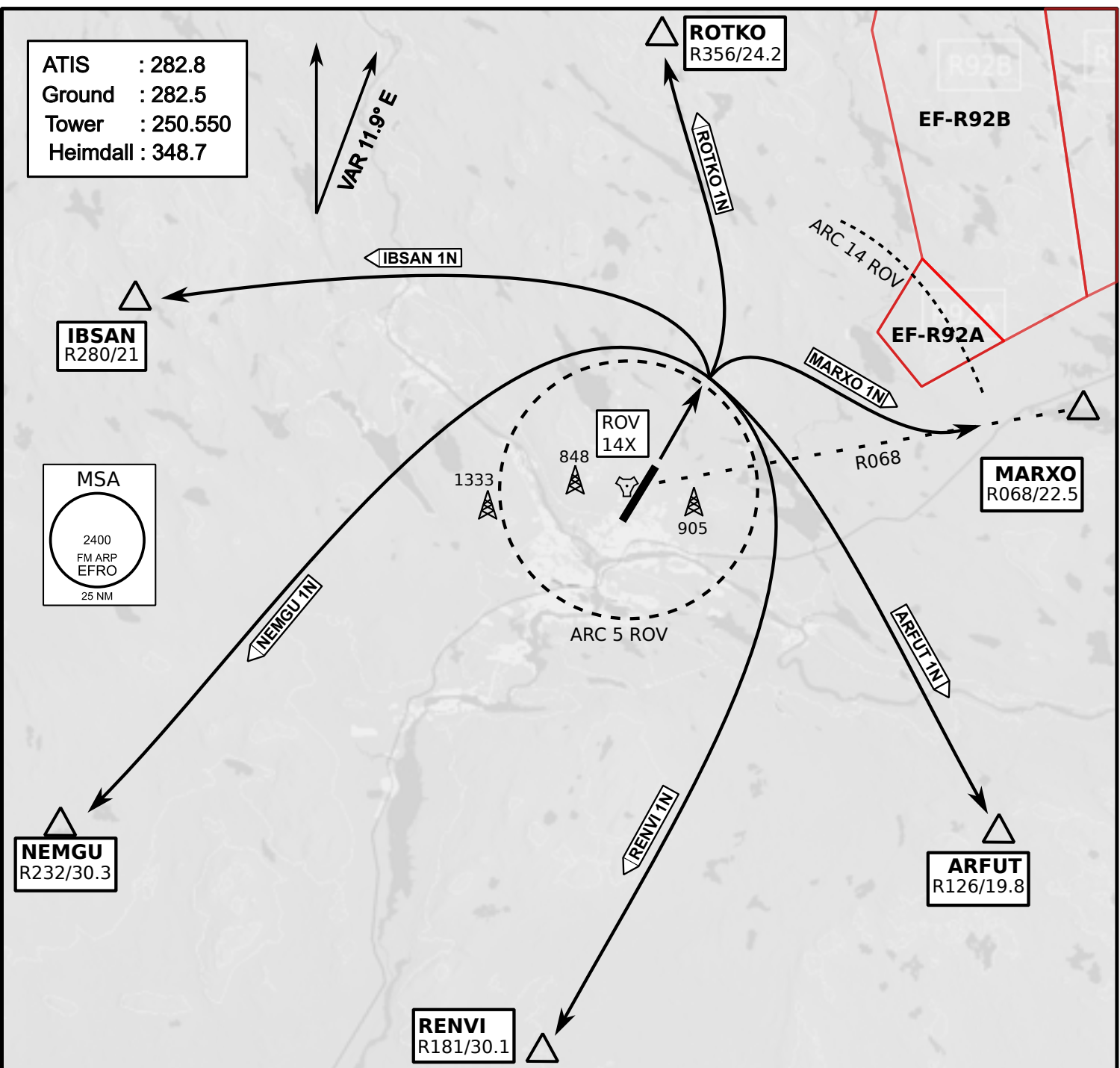
ARP N66° 33' 42" E025° 49' 51"

elev 643 ft

## ROVANIEMI, FINLAND



ATIS	Ground	Tower	Radar
282.800	282.500	250.550	348.700



- Climb on Rwy heading to min A2000ft
- when passing A2000ft OR 5 DME ROV (whichever is later) turn to exit point
- Stay outside ARC 5 ROV
- if EF-R92B is active :  
intercept R068 ROV inside 14 DME ROV to MARXO
- AB usage only if necessary for flight safety



**NOT AVAILABLE**

**NOT AVAILABLE**

**NOT AVAILABLE**

**NOT AVAILABLE**