

MISSION DATA CARD

OPORD		Callsign		Mission		Date/Time		
4287/2025		Falcon 2		Training		221943DEC25		
Task						Freq		
AO						264.05		
Departure				Recovery				
SID RWY 03				Tacan RWY 03				
#	Callsign		Pilot		IFF	TCN	LSR	NET
-1	Falcon 2-1		Hercules		5421	1Y	1701	

LOADOUT

A/A	2xA120C, 2xA9X				GUN	100% HEI-T	
A/G	2xA65D				CHF	60	
POD	ATP				FLR	60	
TKS	2xFT370, FT300				FUEL	100%	

TOLD

	Takeoff	Target	Joker	Bingo	Land
FUEL	14119				

AIRBASES

	Name	TCN	ATIS	GND	TWR	RWY	Elev	ILS
Dep	Rovaniemi	14X	282.8	282.5	250.55	21	643	111.7
Arr	Rovaniemi	14X	282.8	282.5	250.55	21	643	111.7
Div	Rovaniemi	14X	282.8	282.5	250.55	21	643	111.7

FLIGHTPLAN

#	Name	Navaid/Coords/DME	ALT	TOT
1	IMARI	N66 28.406 E025 31.291	5000	
2	IBSAN	N66 42.500 E025 01.083	15000	
3	NAFFI	N67 04.630 E023 11.660	15000	
4	ENOXI	N66 54.960 E021 38.780	15000	
5	T.ESR-Nord	N66 12.825 E021 24.134	0	
6	T.ESR04-West	N65 57.826 E021	0	
7	T.ESR04-SÜD	N65 45.571 E021 43.753	0	
8	T.ESR04-West	N65 54.257 E022 12.694	0	
9	PERUN	N66 44.198 E026	5000	

SUPPORT**Tanker**

Callsign	TCN	Freq	ALT	TAS
ARCO 1	22Y	319.8		
	Pos			

AWACS

Callsign	Freq	ALT	Pos
HEIMDALL	348.7		

OTHER FLIGHTS

Callsign	Mission	Airframe	Freq	TCN	Grpld	Laser
Panther 1	Training	4x F/A-18C	261.35	1/64	1	157X
AO	ENR07	Task	Buddylasing			
Joker* 1	Training	1x C-130J	264.05	11/74		111X
AO		Task				

RADIO CHANNELS

#	Freq	Name
1		Flight/Squadron specific
2	282.8	Rovaniemi ATIS
3	282.5	Rovaniemi Ground
4	250.55	Rovaniemi Tower
5	320.7	Bodo ATIS
6	250.75	Bodo Tower
7	235.45	Kallax ATIS
8	250.3	Kallax Tower
9	265.0	Texaco-1 KC-135 Medium / Slow 71Y
10	319.8	Arco-1 KC-135 High / Fast 22Y
11	360.8	Shell-1 KC-135 MPRS High / Fast 41Y
12	304.0	CVN-71 Rough Rider (RRR) 71X
13	303.0	LHA-1 Tarawa (TWA) 79X
14	247.8	S-3B Mauler-1 (MAU) 64Y
15	347.8	Loki (E-2D)
16	348.7	Heimdall (E-3A)
17	242.17	ESR02 - CAS Range Operator
18	34.7	ESR02 - JTAC Odin
19	270.5	Blue
20	270.75	Red

RAMROD

0	1	2	3	4	5	6	7	8	9
F	L	A	M	I	N	G	O	E	S

KTC 1400 C

	0	1	2	3	4	5	6	7	8	9
A	CRGX	WTN	DKO	BL	FY	AVH	JQ	IE	PS	MU
B	WJUO	LBY	VCS	PR	QA	THI	DG	EX	MN	FK
C	QFID	JOC	NPH	RE	AB	WGM	VY	SK	XU	LT
D	JALG	FRB	VUX	TK	YI	OHN	WQ	PE	SM	CD
E	HOQA	PWB	UCX	ER	ND	VLF	ST	MK	GI	JY
F	LFDJ	RYO	XVI	QU	AS	MGW	HB	CP	NT	EK
G	IMTJ	VLR	HAS	XD	KF	GNC	OU	WP	BE	YQ
H	OCXP	YIU	NFH	RQ	WG	VKS	DL	AT	MB	JE
I	PMVW	IAO	YKX	DH	EU	QFL	NG	CJ	RT	SB
J	ETYS	ABI	NMR	LH	WG	OKU	JQ	PD	CV	FX
K	KLIW	QJD	PXU	TE	GO	NCB	AR	MH	SF	YV
L	BRDL	PAY	MVT	XF	IK	JUO	SQ	NH	EC	WG
M	EBLI	CDJ	HPW	YR	MO	SUG	TA	XF	KN	QV
N	BOUE	QTF	WHX	DY	IN	MSJ	VL	GP	RA	CK
O	FCRJ	DHY	IWU	ET	MP	GVO	AN	XQ	LK	BS
P	CYJW	PRU	TSV	KF	GB	OQE	AH	XI	LN	DM
Q	STRV	UJN	XMC	FH	EG	OPA	QW	BD	YL	KI
R	TNWX	RSP	ELK	BV	DI	HGQ	JF	OU	YA	MC
S	PWIA	BRG	TUY	CE	LJ	NKQ	DO	VM	XF	SH
T	SXIU	DAG	YMR	CP	JT	LFV	EN	HK	OB	WQ
U	LEVY	BFJ	INS	AP	GK	OHC	TU	RM	QX	DW
V	EPMX	SAT	BNU	KD	WL	RQC	VI	JO	HG	FY
W	QH XV	AMF	POC	IG	BY	KTE	JL	DU	RW	SN
X	QMYD	FPW	TEC	IA	KL	UGX	OJ	SH	RB	NV
Y	COQI	FVL	TND	BE	GJ	XKH	UA	WR	SM	PY

NAVAIDS

Id	Name	Channel	Position	Elevation
BOO	Bodo	45	N67 15.838 E014 20.046	43
BNK	Banak	47	N70 03.937 E024 58.181	17
OYA	Andoya	28	N69 17.175 E016 08.658	19

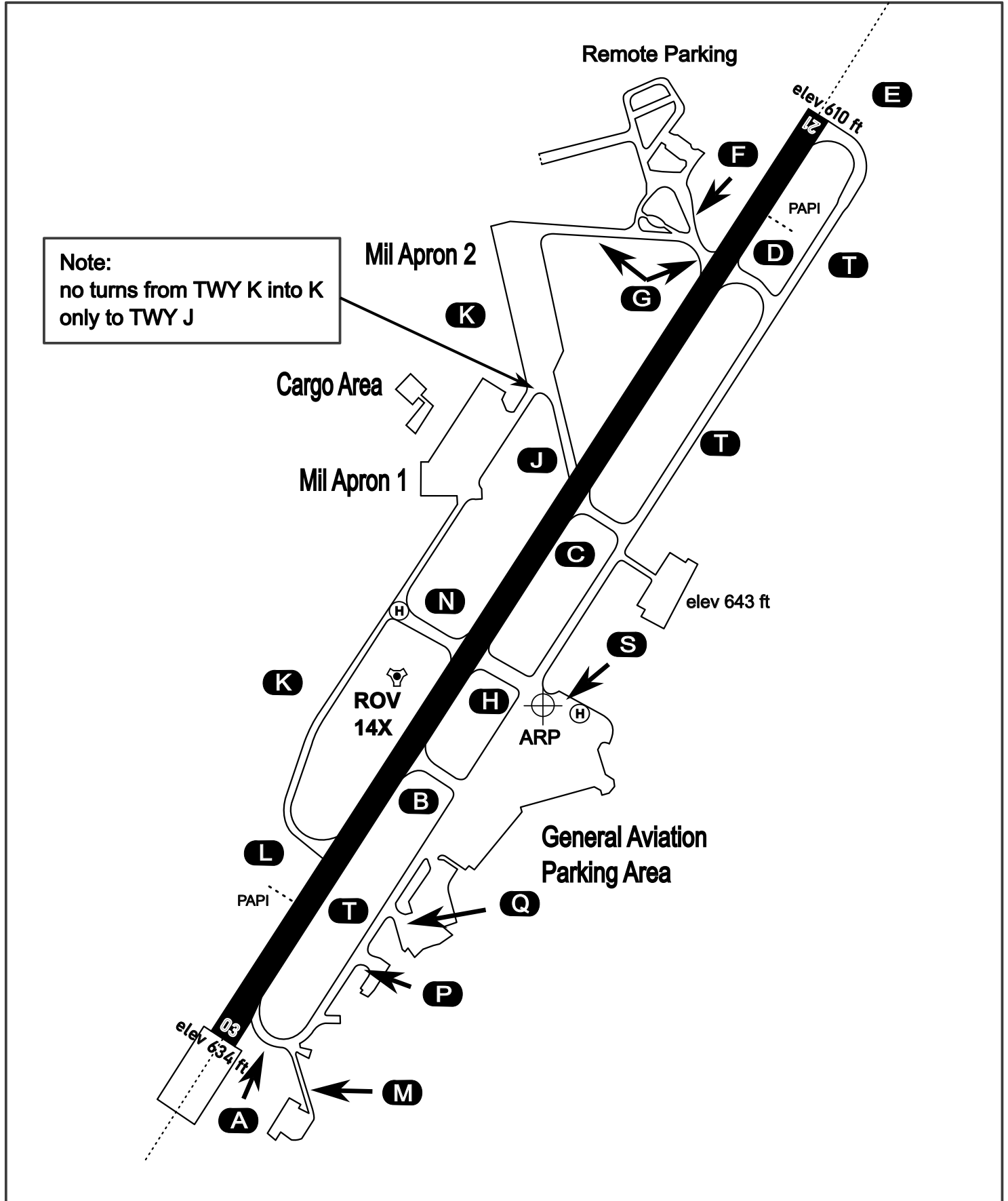
AERODROME CHART

Rovaniemi Aerodrome

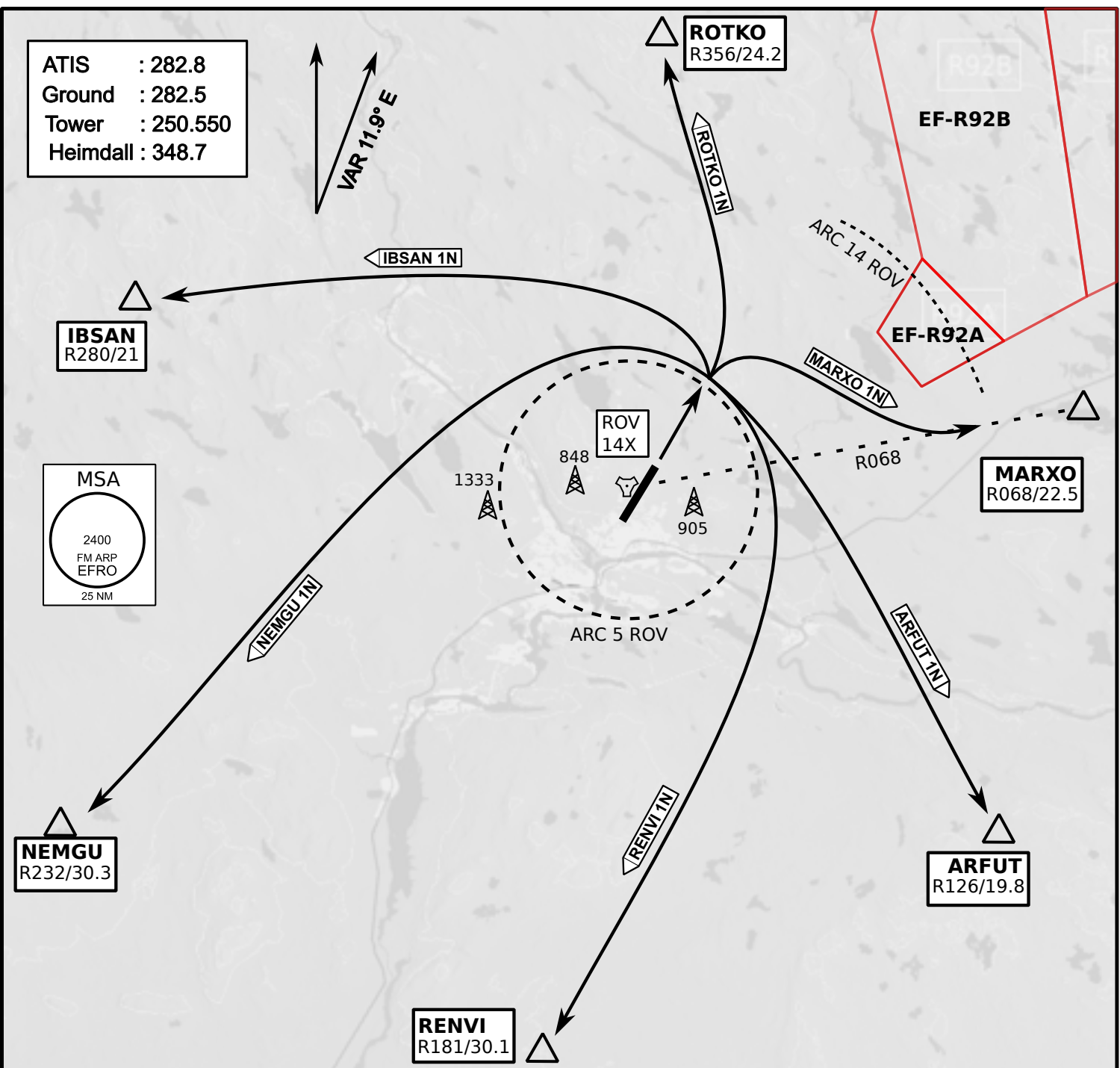
ARP N66° 33' 42" E025° 49' 51"

elev 643 ft

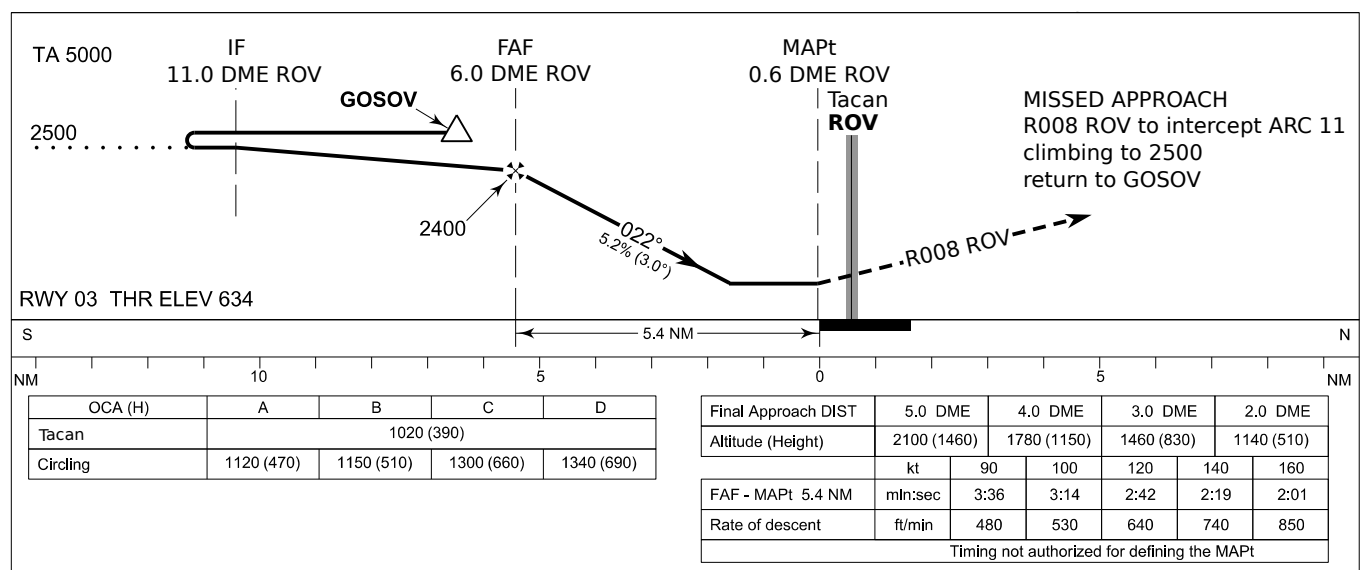
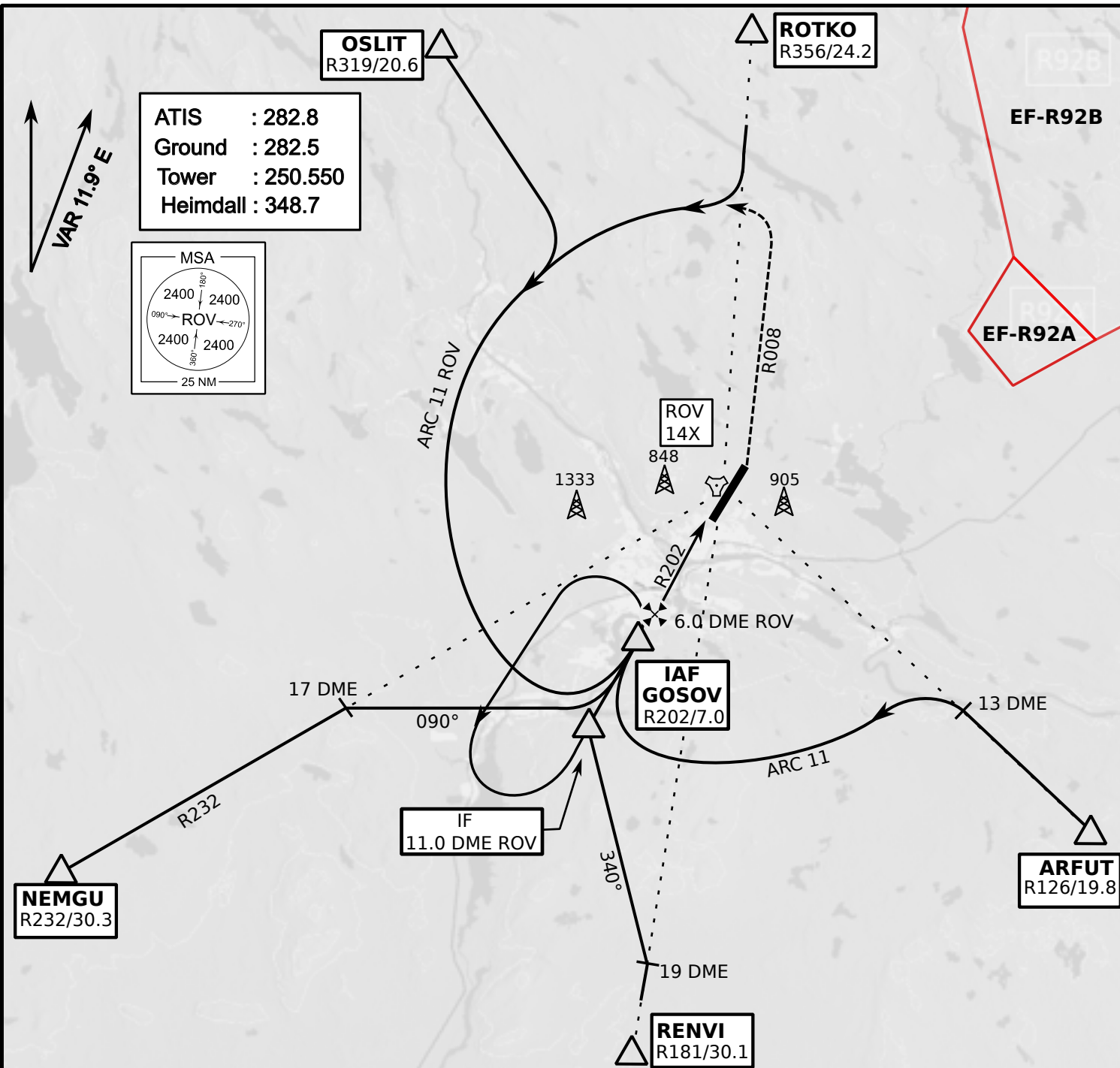
ROVANIEMI, FINLAND



ATIS	Ground	Tower	Radar
282.800	282.500	250.550	348.700



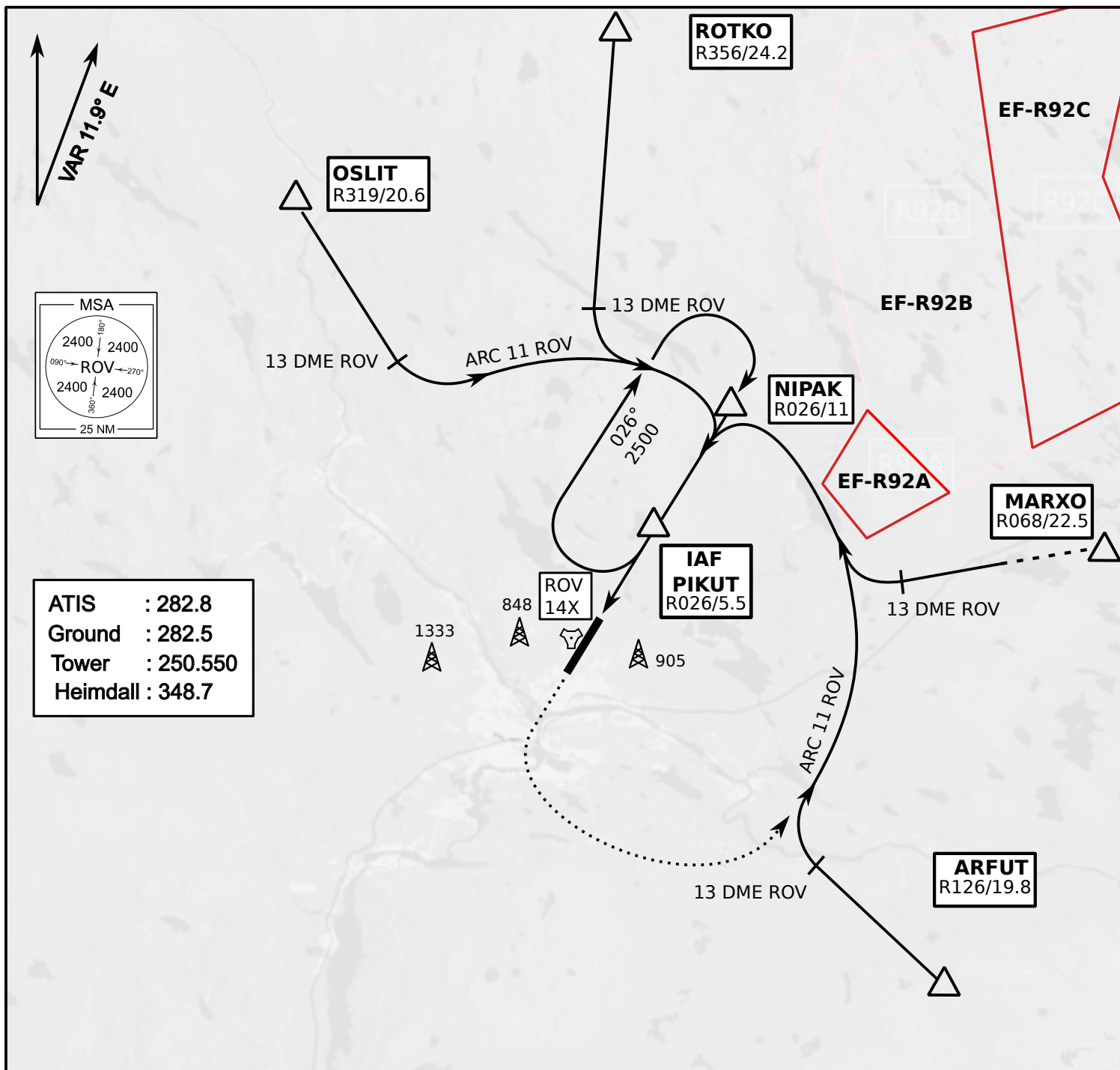
- Climb on Rwy heading to min A2000ft
- when passing A2000ft OR 5 DME ROV (whichever is later) turn to exit point
- Stay outside ARC 5 ROV
- if EF-R92B is active :
intercept R068 ROV inside 14 DME ROV to MARXO
- AB usage only if necessary for flight safety



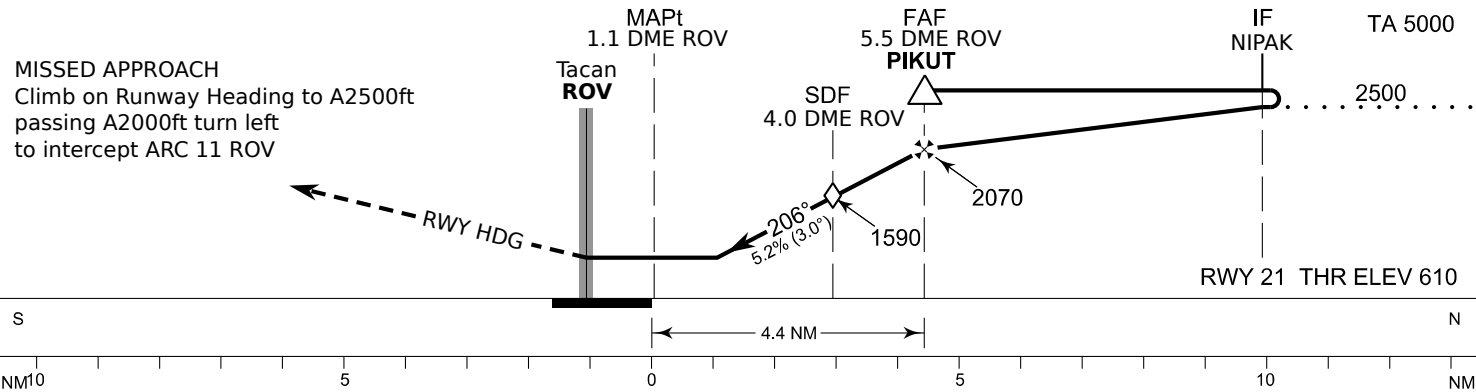
INSTRUMENT
APPROACH CHART

ELEV 643ft
HEIGHTS RELATED TO
THR RWY21 ELEV 610ft

Tacan RWY 21
ROVANIEMI AERODROME
ROVANIEMI, FINLAND



ATIS : 282.8
Ground : 282.5
Tower : 250.550
Heimdall : 348.7



OCA (H)	A	B	C	D
Tacan	1010 (400)			
Tacan WO SDF	1590 (980)			
Circling	1120 (470)	1150 (510)	1300 (660)	1340 (690)

Final Approach DIST	3.0 DME	4.0 DME	5.0 DME			
Altitude (Height)	1280 (670)	1590 (980)	1910 (1300)			
	kt	90	100	120	140	160
FAF - MAPt 4.4 NM	min:sec	2:56	2:38	2:12	1:53	1:39
Rate of descent	ft/min	480	530	640	740	850

Timing not authorized for defining the MAPt

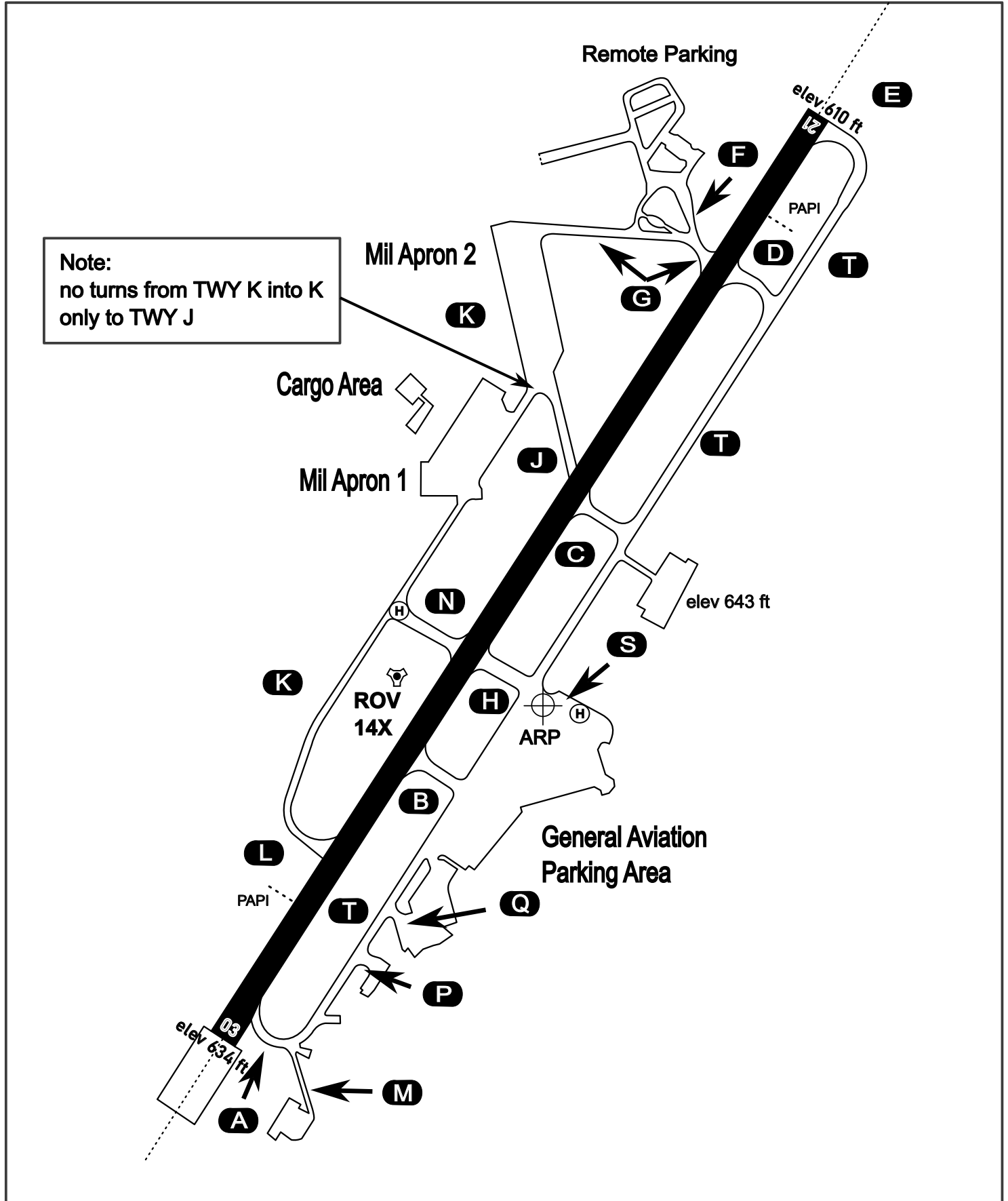
AERODROME CHART

Rovaniemi Aerodrome

ARP N66° 33' 42" E025° 49' 51"

elev 643 ft

ROVANIEMI, FINLAND



ATIS	Ground	Tower	Radar
282.800	282.500	250.550	348.700