

MISSION DATA CARD

OPORD		Callsign		Mission		Date/Time		
4280/2025		Raptor 3		Training		181959DEC25		
Task						Freq		
AO						134.0		
Departure				Recovery				
SID RWY 21				ILS RWY 21				
#	Callsign		Pilot		IFF	TCN	LSR	NET
-1	Raptor 3-1		Hercules		1631	1Y	1621	

LOADOUT

A/A	3xA120C, A9X				GUN	100% HEI-T	
A/G	4xA65D				CHF	120	
POD	HTS, A184L, ATP				FLR	0	
TKS	2xFT370				FUEL	100%	

TOLD

	Takeoff	Target	Joker	Bingo	Land
FUEL	12113				

AIRBASES

	Name	TCN	ATIS	GND	TWR	RWY	Elev	ILS
Dep	Rovaniemi	14X	282.8	282.5	250.55	21	643	111.7
Arr	Rovaniemi	14X	282.8	282.5	250.55	21	643	111.7
Div	Rovaniemi	14X	282.8	282.5	250.55	21	643	111.7

FLIGHTPLAN

#	Name	Navaid/Coords/DME	ALT	TOT
1	ROVANIMI	N66 33.920 E025 49.885		
2	IBSAN	N66 42.466 E025	5000	
3	NAFFI	N67 E023 11.459	15000	
4	ENOXI	N66 54.986 E021 38.956	15000	
5	ESR-west	N65 57.849 E021	10000	
6	ESR-Süd	N65 45.847 E021 43.385	10000	
7	ESR-Ost	N65 54.131 E022 12.509	10000	
8	ESR-Nord	N66 E021 25.177	10000	
9	PERUN	N66 44.135 E026 01.630	5000	

SUPPORT**Tanker**

Callsign	TCN	Freq	ALT	TAS
ARCO 1	22Y	319.8		
	Pos			

AWACS

Callsign	Freq	ALT	Pos
LOKI	347.8		

RADIO CHANNELS

#	Freq	Name
1		Flight/Squadron specific
2	282.8	Rovaniemi ATIS
3	282.5	Rovaniemi Ground
4	250.55	Rovaniemi Tower
5	320.7	Bodo ATIS
6	250.75	Bodo Tower
7	235.45	Kallax ATIS
8	250.3	Kallax Tower
9	265.0	Texaco-1 KC-135 Medium / Slow 71Y
10	319.8	Arco-1 KC-135 High / Fast 22Y
11	360.8	Shell-1 KC-135 MPRS High / Fast 41Y
12	304.0	CVN-71 Rough Rider (RRR) 71X
13	303.0	LHA-1 Tarawa (TWA) 79X
14	247.8	S-3B Mauler-1 (MAU) 64Y
15	347.8	Loki (E-2D)
16	348.7	Heimdall (E-3A)
17	242.17	ESR02 - CAS Range Operator
18	34.7	ESR02 - JTAC Odin
19	270.5	Blue
20	270.75	Red

RAMROD

0	1	2	3	4	5	6	7	8	9
S	C	U	N	T	H	O	R	P	E

KTC 1400 C

	0	1	2	3	4	5	6	7	8	9
A	HBXI	JRS	OTC	EV	FL	MPY	UN	WD	AG	QK
B	IUBR	QVP	CFT	EW	AS	KXJ	DY	OH	MG	NL
C	ADWF	PXQ	SOH	EC	VM	IYG	JR	BK	TN	UL
D	EFYO	RXV	BCS	KW	AI	TGQ	JU	NP	HM	DL
E	WVYP	AFU	QSJ	ED	GK	LBN	XH	TI	OC	MR
F	FPLD	QVR	GHA	MY	IN	UEX	CW	TB	JS	KO
G	OHLV	KSM	CNP	UB	XG	WFY	RI	TE	JQ	AD
H	YTKA	JXR	BLN	QH	PE	MFS	CI	UO	WG	DV
I	BFVA	QTU	IYL	OR	KC	WDJ	MX	HG	NS	PE
J	VKAD	RNB	JXY	LC	OT	SGF	MP	UI	QH	WE
K	KGAP	LOV	YIX	MU	CE	WDS	BF	QN	JH	TR
L	UVEY	NLA	FTH	JX	ID	WMK	QS	GB	RC	PO
M	EBOL	XHV	RDJ	WN	SA	FQK	MP	IG	TY	UC
N	DVXP	TIW	OYN	FK	MC	JBG	QS	UH	AL	ER
O	FUNR	VMO	EXK	YP	AQ	GSH	DC	IL	JW	BT
P	BSUI	WVY	XOR	TJ	CL	HPK	EG	AD	QF	NM
Q	LVSA	KTP	EWX	HN	IB	FOR	DJ	YC	QG	MU
R	TKLG	JSX	DIF	MB	WQ	OVR	CH	NP	UE	YA
S	JPIB	LSC	DOT	HE	FG	MXA	KU	NY	WR	VQ
T	AUCI	XST	PNR	WJ	EV	BDF	MY	OH	LG	KQ
U	WSNO	URV	IAE	YL	KJ	QDP	MH	BF	CT	XG
V	ACVG	JPQ	DFK	XU	NL	EIS	YB	TH	OR	WM
W	ECQH	SVM	RBL	XO	PW	IUT	NK	AY	GJ	DF
X	AGFY	OJX	BPU	SI	VE	CQR	KH	ML	WN	TD
Y	AIST	QHG	BPC	OR	MY	FEJ	NL	XU	KW	DV

NAVAIDS

Id	Name	Channel	Position	Elevation
BOO	Bodo	45	N67 15.838 E014 20.046	43
BNK	Banak	47	N70 03.937 E024 58.181	17
OYA	Andoya	28	N69 17.175 E016 08.658	19

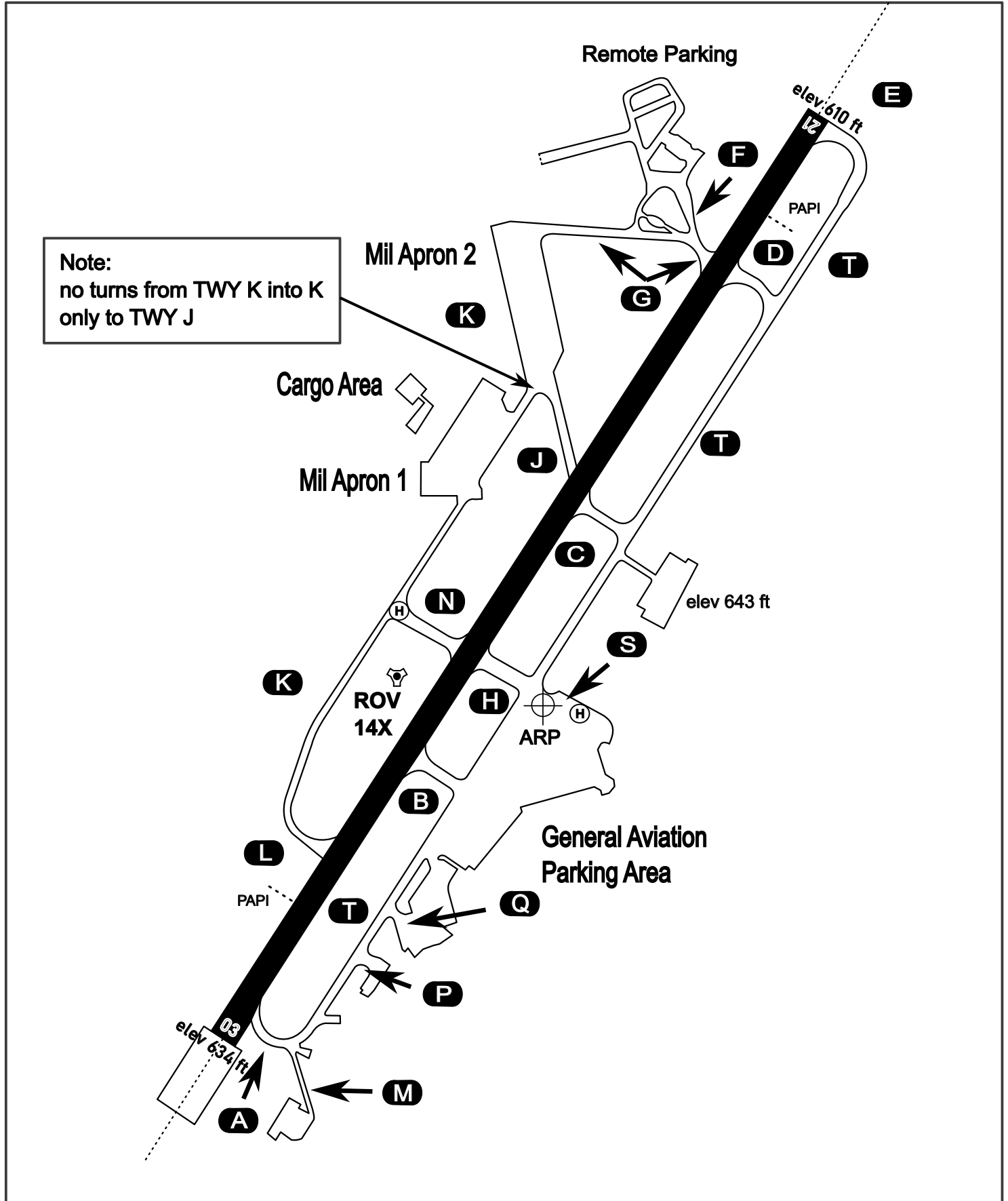
AERODROME CHART

Rovaniemi Aerodrome

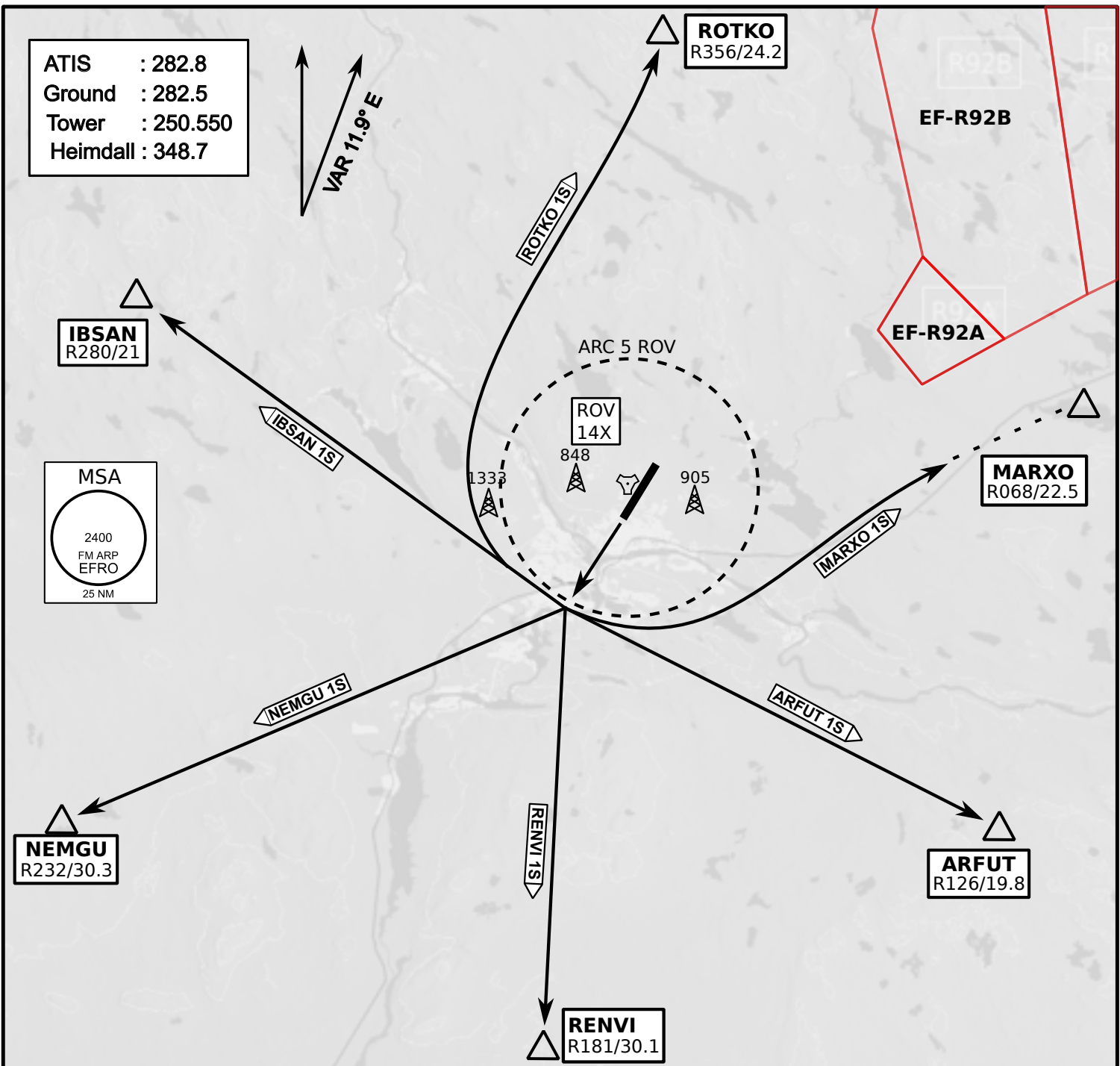
ARP N66° 33' 42" E025° 49' 51"

elev 643 ft

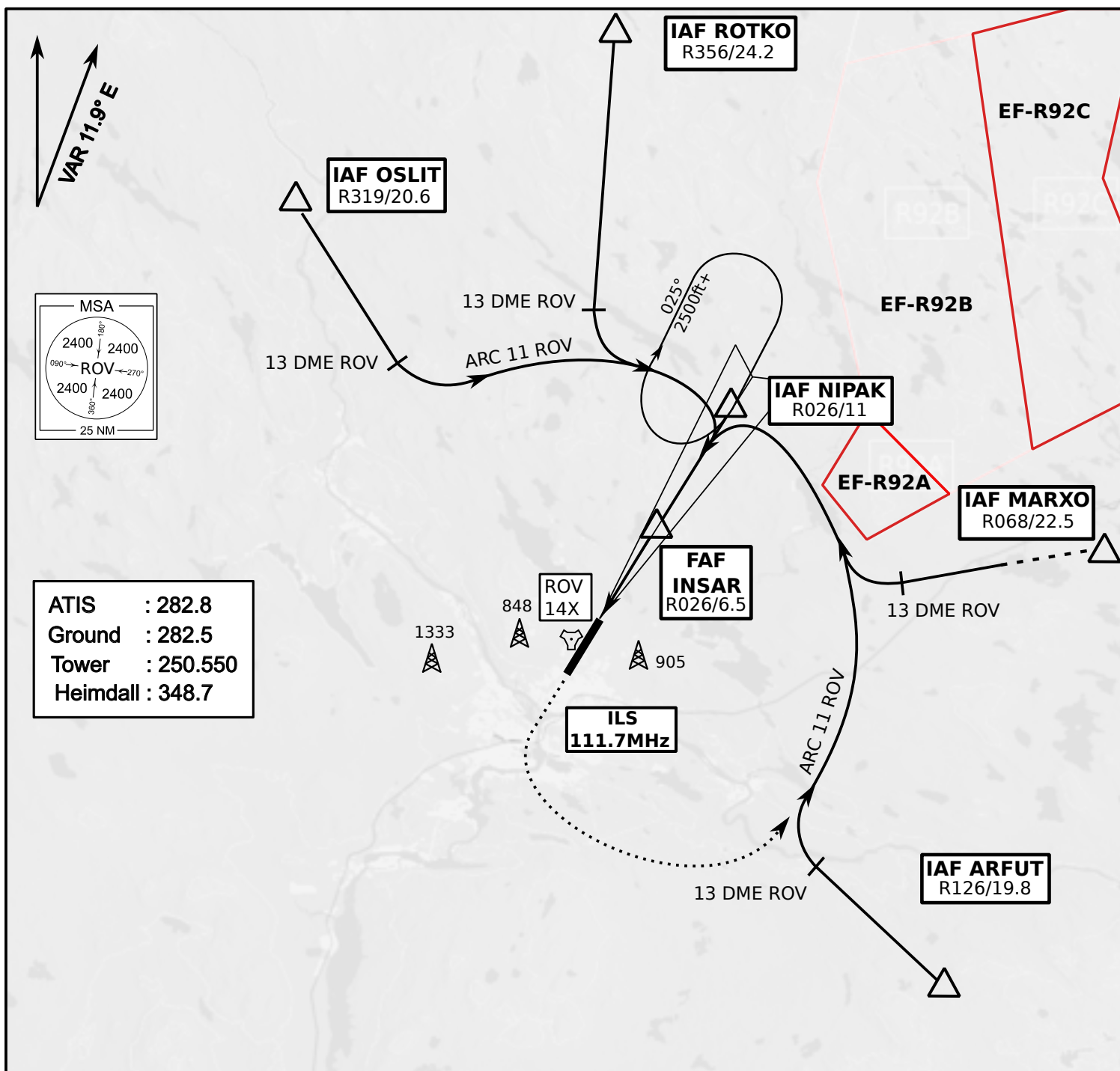
ROVANIEMI, FINLAND



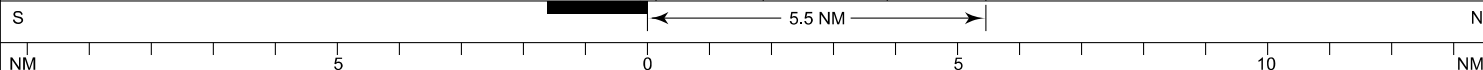
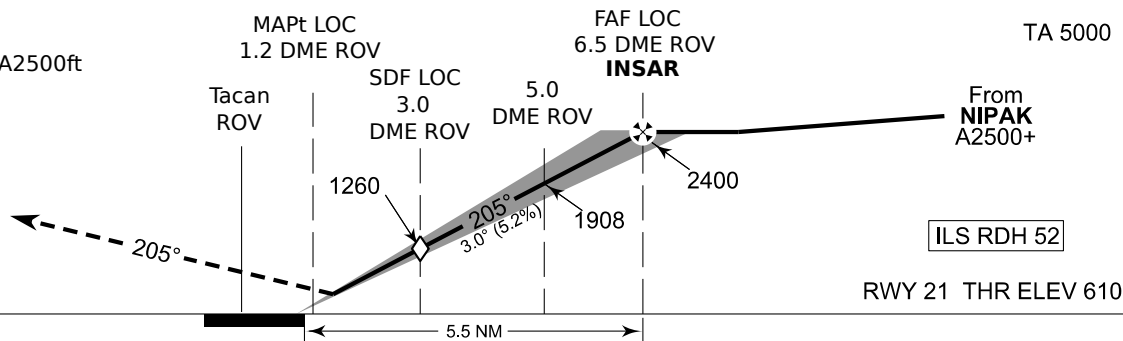
ATIS	Ground	Tower	Radar
282.800	282.500	250.550	348.700



- Climb on Rwy heading to min A2000ft
- when passing A2000ft OR 5 DME ROV (whichever is later) turn direct exit point
- Stay outside ARC 5 ROV
- AB usage only if necessary for flight safety



MISSED APPROACH
Climb on Runway Heading to A2500ft
passing A2000ft turn left
to intercept ARC 11 ROV



OCA (H)	A	B	C	D
ILS CAT I	773 (164)	784 (175)	795 (186)	809 (200)
LOC	930 (320)			
LOC WO SDF	1260 (650)			
Circling	1120 (470)	1150 (510)	1300 (660)	1340 (690)

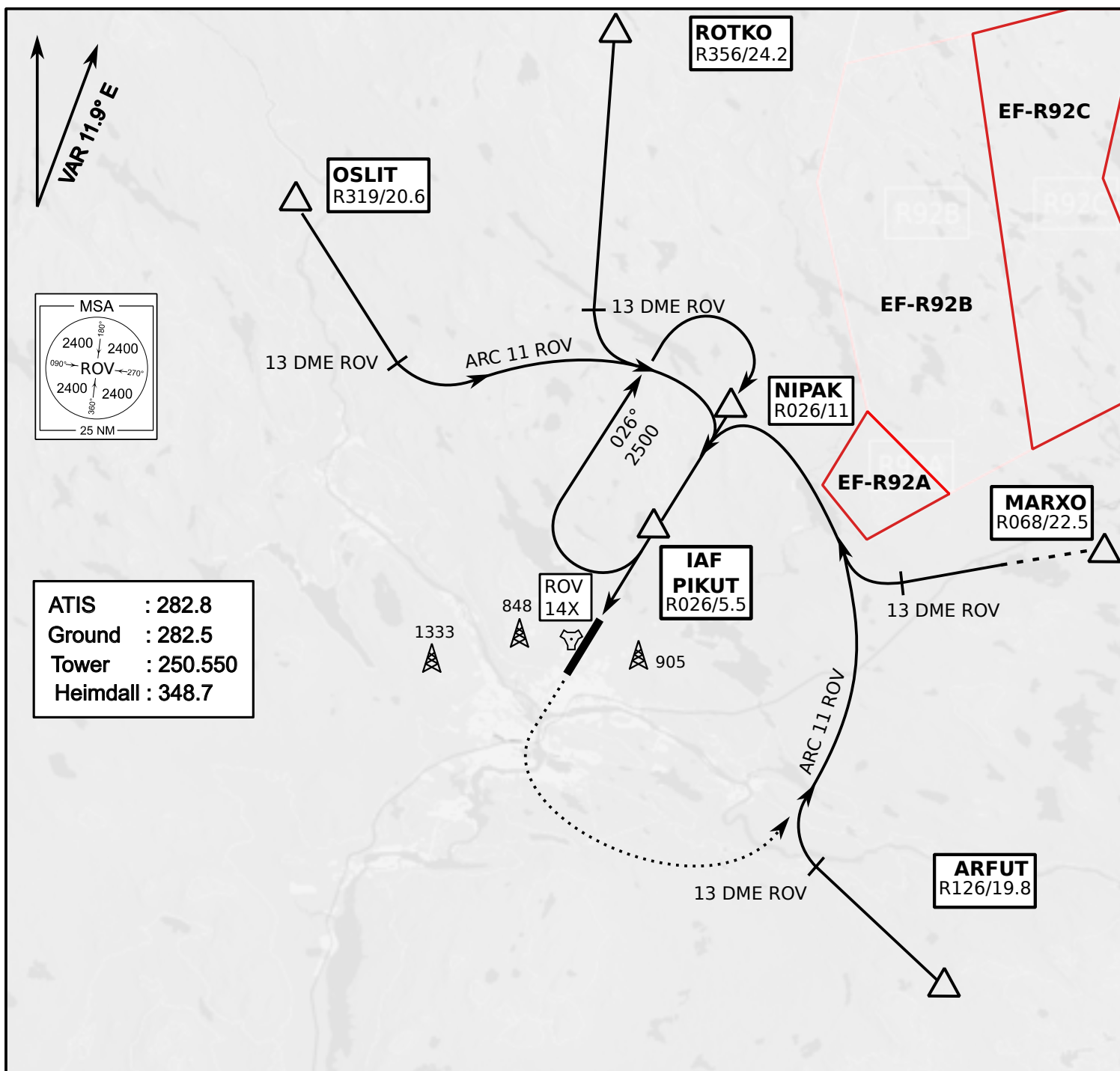
	kt	90	100	120	140	160
FAF - MAPt 5.4 NM	min:sec	3:36	3:14	2:42	2:19	2:01
Rate of descent	ft/min	480	530	640	740	850

Timing not authorized for defining the MAPt

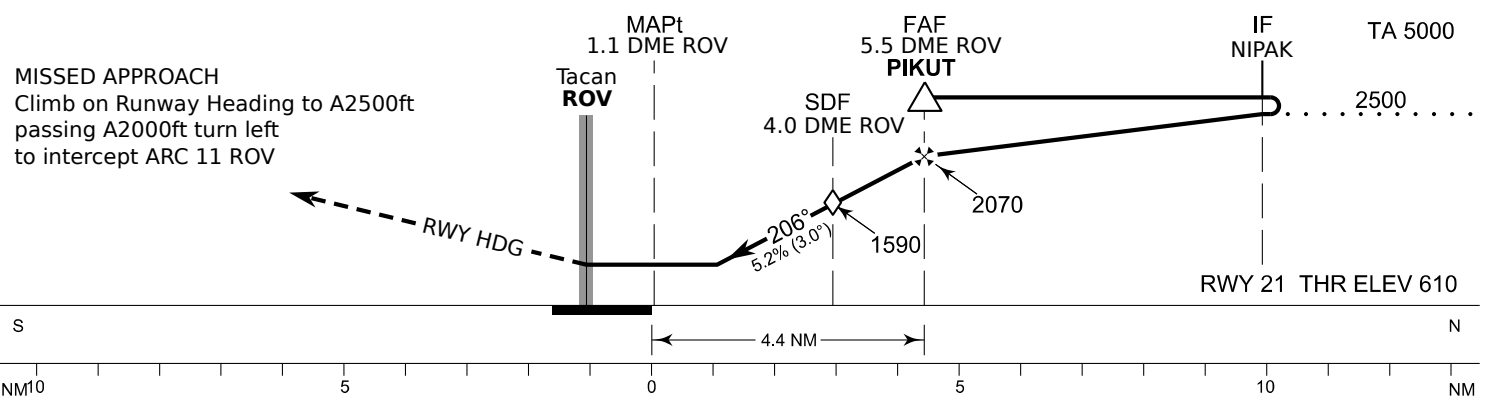
INSTRUMENT
APPROACH CHART

ELEV 643ft
HEIGHTS RELATED TO
THR RWY21 ELEV 610ft

Tacan RWY 21
ROVANIEMI AERODROME
ROVANIEMI, FINLAND



ATIS : 282.8
Ground : 282.5
Tower : 250.550
Heimdall : 348.7



OCA (H)	A	B	C	D
Tacan	1010 (400)			
Tacan WO SDF	1590 (980)			
Circling	1120 (470)	1150 (510)	1300 (660)	1340 (690)

Final Approach DIST	3.0 DME	4.0 DME	5.0 DME			
Altitude (Height)	1280 (670)	1590 (980)	1910 (1300)			
	kt	90	100	120	140	160
FAF - MAPt 4.4 NM	min:sec	2:56	2:38	2:12	1:53	1:39
Rate of descent	ft/min	480	530	640	740	850

Timing not authorized for defining the MAPt

01.12.2024

vJaBoG32

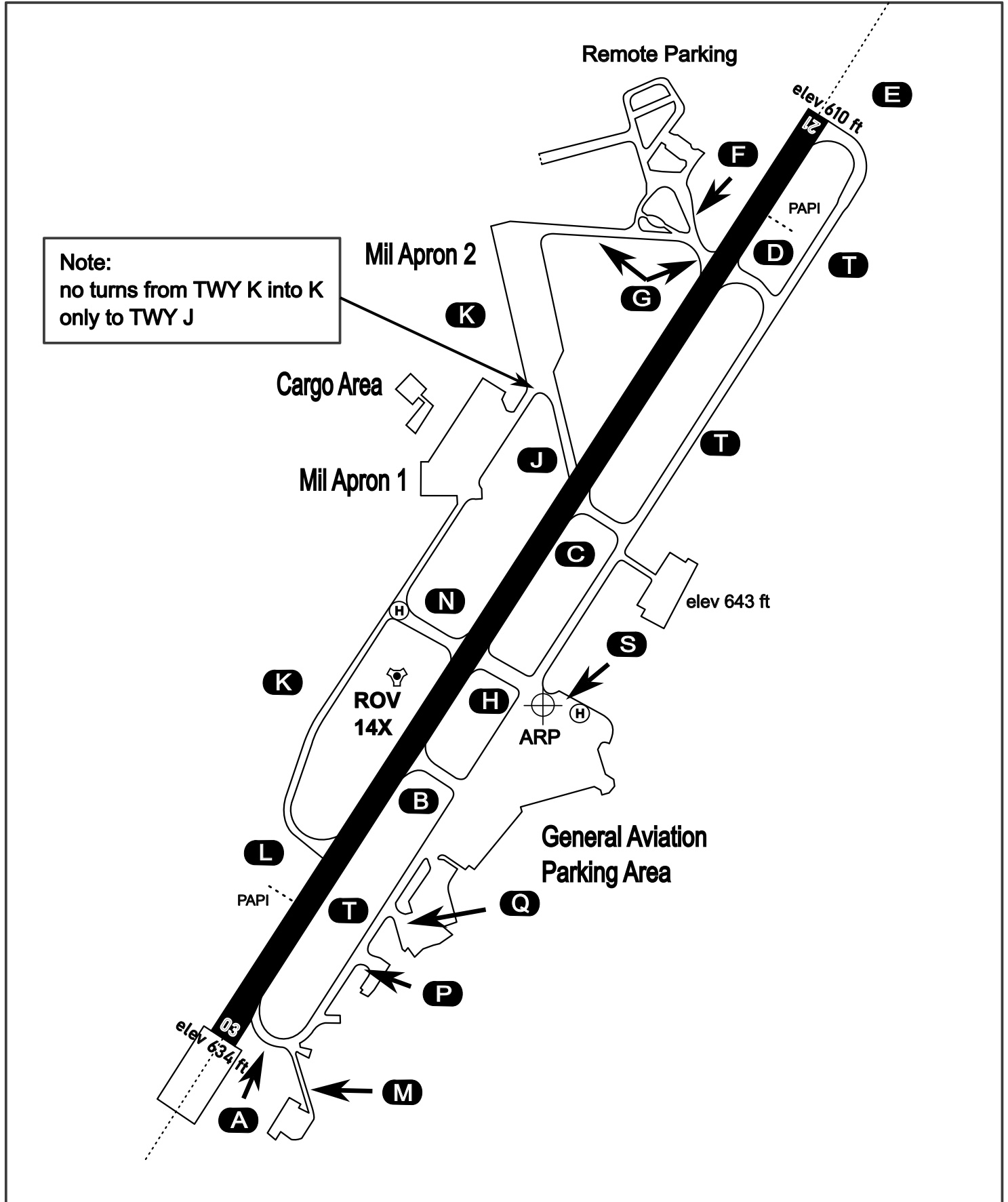
AERODROME CHART

Rovaniemi Aerodrome

ARP N66° 33' 42" E025° 49' 51"

elev 643 ft

ROVANIEMI, FINLAND



ATIS	Ground	Tower	Radar
282.800	282.500	250.550	348.700