

MISSION DATA CARD

OPORD		Callsign		Mission		Date/Time		
4272/2025		Tiger 1		Strike		112000DEC25		
Task	Ship Striker					Freq		
AO	Ship Strike					261.15		
Departure				Recovery				
CAT				CASE I				
#	Callsign		Pilot		IFF	TCN	LSR	NET
-1	Tiger 1-1		Ghost		1011	1Y	1551	
-2	Tiger 1-2		Prinz		1012	64Y	1552	
-3	Tiger 1-3		Jemi		1013	64X	1553	

LOADOUT

A/A	2xA9X, A120C				GUN	80% HEI-T	
A/G	4xA84D				CHF	90	
POD	TGP				FLR	30	
TKS	FPU-8A				FUEL	100%	

TOLD

	Takeoff	Target	Joker	Bingo	Land
FUEL	13047			4000	

AIRBASES

	Name	TCN	ATIS	GND	TWR	RWY	Elev	ILS
Dep	CVN-71 USS Theodore Roosevelt	71X		ICLS 7	304.0			
Arr	CVN-71 USS Theodore Roosevelt	71X		ICLS 7	304.0			
Div	Banak	47X			250.5	34	26	109.1

FLIGHTPLAN

#	Name	Navaid/Coords/DME	ALT	TOT
1	IP	N71 29.681 E026 49.371	28000	
2	Last Position Red Navv	N71 29.947 E030 29.193	0	
3	PORSANG	N69 53.900 E025 00.483	2500	
4	BANAK	N70 04 E024 58.433	0	
5	Shell-1	N70 04.761 E021 22.250	27000	

COMMS

Radio	Usage
1	#12(Mother) 304.0 #16 (Haimdall) 348.7 #12(Mother) 304.0
2	261.15
3	Mids A 23
4	Mids B 44

SUPPORT**Tanker**

Callsign	TCN	Freq	ALT	TAS
SHELL 1	41Y	360.8		

Pos

AWACS

Callsign	Freq	ALT	Pos
HEIMDALL	348.7		
LOKI	347.8		

OTHER FLIGHTS

Callsign	Mission	Airframe	Freq	TCN	Grpld	Laser
Raptor 1	CAP	4x F-16C	134.0	1/64		162X
AO	CAP South	Task	CAP			
Monster 1	CAS	3x A-10C	132.15	1/64	21	161X
AO	BRAVO 2	Task	A2G			
T-Rex 2	CAS	3x A-10C	132.25	1/64	25	165X
AO	CHARLIE 2	Task	A2G			
Panther 1	Strike	4x F/A-18C	261.35	1/64		157X
AO	Ship Strike	Task	Ship Striker			
Raptor 2	CAS	4x F-16C	134.5	1/64		162X
AO	CHARLIE/DELTA2	Task	CAS C2, D2; Recce SA-10 Kirkenes			
Rattler 2	BAI	2x AH-64D	133.5	1/64		125X
AO	Alpha2 + 3	Task	BAI			
Joker* 1	Transport	1x CH-47F	264.05	1/64		170X
AO	Alpha2 + 3	Task				
Nazgul 6	CAP	4x F-15E	262.45	1/64		156X
AO	CAP North	Task	CAP for Monster, T-Rex			

RADIO CHANNELS

#	Freq	Name
1		Flight/Squadron specific
2	282.8	Rovaniemi ATIS
3	282.5	Rovaniemi Ground
4	250.55	Rovaniemi Tower
5	320.7	Bodo ATIS
6	250.75	Bodo Tower
7	235.45	Kallax ATIS
8	250.3	Kallax Tower
9	265.0	Texaco-1 KC-135 Medium / Slow 71Y
10	319.8	Arco-1 KC-135 High / Fast 22Y
11	360.8	Shell-1 KC-135 MPRS High / Fast 41Y
12	304.0	CVN-71 Rough Rider (RRR) 71X
13	303.0	LHA-1 Tarawa (TWA) 79X
14	247.8	S-3B Mauler-1 (MAU) 64Y
15	347.8	Loki (E-2D)
16	348.7	Heimdall (E-3A)
17	242.17	ESR02 - CAS Range Operator
18	34.7	ESR02 - JTAC Odin
19	270.5	Blue
20	270.75	Red

RAMROD

0	1	2	3	4	5	6	7	8	9
P	U	R	G	A	T	I	V	E	S

KTC 1400 C

	0	1	2	3	4	5	6	7	8	9
A	TLHC	SGP	ODJ	XN	YF	WRV	BU	MK	IE	AQ
B	YXWT	GUQ	AHV	PK	OF	NSL	IJ	MB	RC	DE
C	SXIT	LGP	AHO	JK	VR	ECM	DN	FW	UY	QB
D	RYIN	QCD	OTJ	PW	GB	XUK	FE	AM	SL	VH
E	RMGV	WPQ	CSJ	EN	ID	THK	XF	UA	OY	BL
F	SNAX	BIW	EHP	VK	LQ	YOF	DG	CM	JT	UR
G	EQNC	XAL	OKF	WB	HU	DJY	MS	PI	VG	TR
H	JHDV	IGX	YSP	WF	MT	NUA	BE	KL	QC	OR
I	PCRY	DSL	EMA	XN	VH	KFW	TQ	GU	OB	JI
J	SJHE	MPG	IAX	VQ	YR	WKF	NT	UC	BO	DL
K	ADNU	WKR	BCF	JG	QO	XTE	MV	SI	LY	HP
L	CWFU	DSY	ETK	AV	NR	GMB	QL	PH	OX	IJ
M	RTQA	UVG	NDL	KI	PB	JWF	XE	HO	SY	MC
N	GYCD	QEP	SVB	TW	HF	IRU	MA	OK	LX	NJ
O	XWTP	HDQ	YIE	NB	GV	CJL	UK	FR	SO	MA
P	XVIG	EQJ	KTW	HY	MF	LRB	UP	OC	SD	NA
Q	KRHW	TJA	SPN	XD	QO	LMI	BU	VE	GC	YF
R	PWRY	SLO	VGQ	KI	UM	CTX	JB	HA	FE	DN
S	ELUM	AQF	PBY	NH	XJ	WID	CR	VO	TK	SG
T	TEDL	JYW	XSC	PF	QU	AKI	BH	VR	NG	MO
U	QIDB	PHF	JXC	VY	UR	GSL	NE	KO	TW	AM
V	LPAW	CKJ	OYH	QV	MU	GFD	TS	IB	RN	XE
W	ABPL	OXM	DTG	EH	NQ	KWV	IU	JY	CR	SF
X	VOMU	XER	CND	GA	KB	FJI	TL	YQ	PS	WH
Y	GCIA	FJX	PSK	WU	LM	YED	BO	NR	QV	HT

NAVAIDS

Id	Name	Channel	Position	Elevation
BOO	Bodo	45	N67 15.838 E014 20.046	43
BNK	Banak	47	N70 03.937 E024 58.181	17
OYA	Andoya	28	N69 17.175 E016 08.658	19







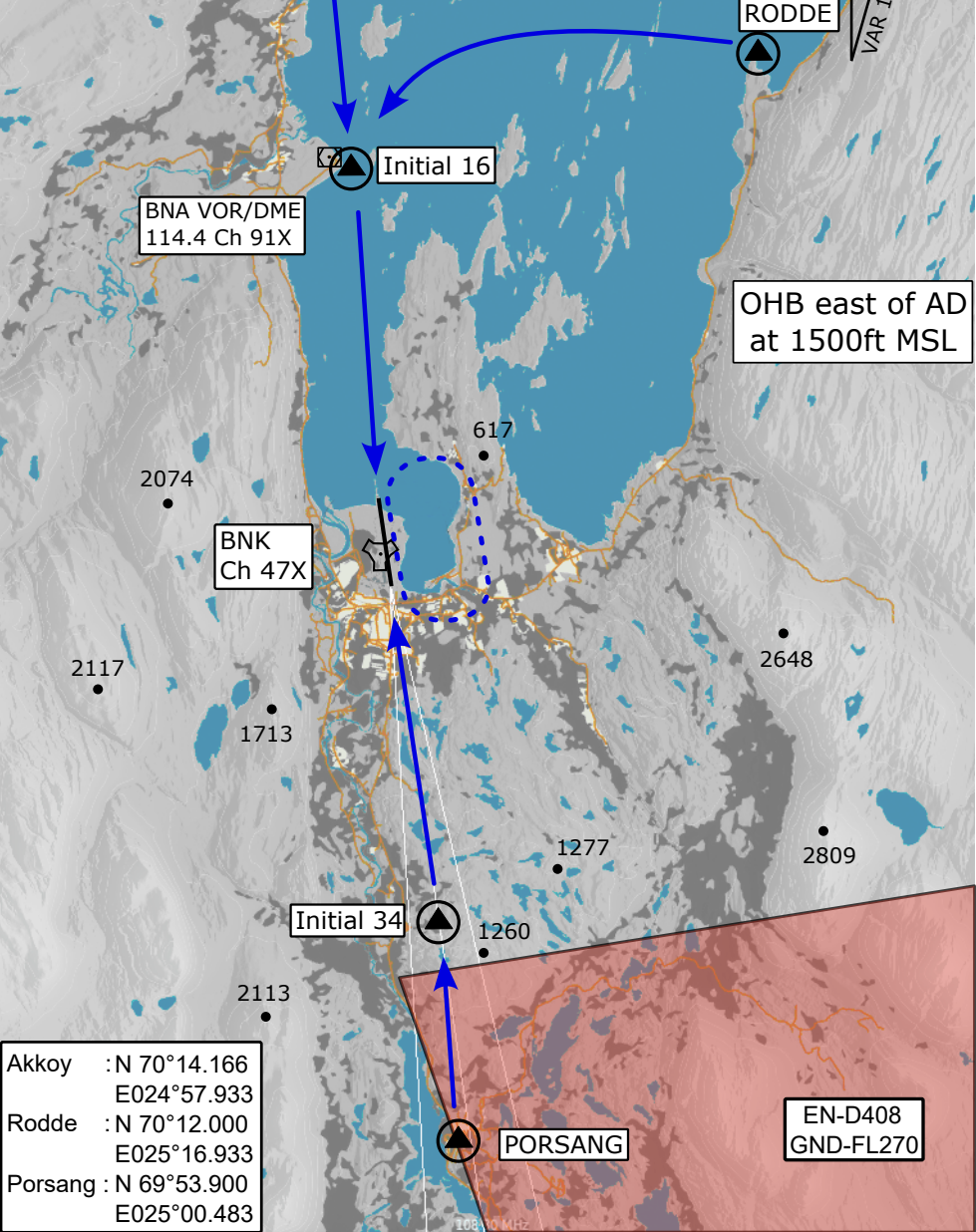
BANAK (ENNA)

Visual ARR JET Rwy 16/34 VAD-CHART | VALID 2025 Lakselv, Norway

BANAK TOWER
250.500
HEIMDALL
348.700

VMC ONLY
AD elev 26ft

VAR 13°E



Akkoys : N 70°14.166
E024°57.933
Rodde : N 70°12.000
E025°16.933
Porsang : N 69°53.900
E025°00.483

VISUAL ARRIVAL ROUTES JETS

v.10 11.SEP25

v.10 11.SEP25 STTR NAV CHART

TWR/GND : 250.50
Heimdall : 348.7

Var 13° E

91
RWY 16 THR Elev 16ft
2785 x 45 Grooved Concrete / Asphalt



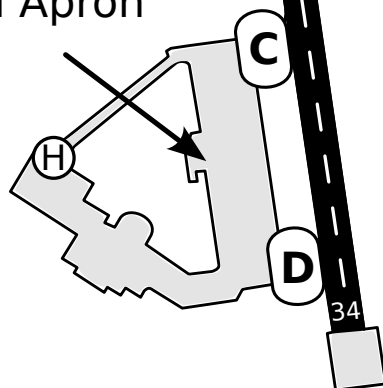
General Aviation

BNK
CH 47



Civ Apron

Mil Apron



34 RWY 34 THR Elev 25ft

