

MISSION DATA CARD

OPORD		Callsign	Mission	Date/Time		
4269/2025		T-Rex 2	CAS	112000DEC25		
Task	A2G					Freq
AO	CHARLIE 2					132.25
Departure			Recovery			
VFR Departure RWY 16/34			VFR Arrival RWY 16/34			
#	Callsign	Pilot	IFF	TCN	LSR	NET
-1	T-Rex 2-1	G-Rex	1521	1Y	1651	25/01
-2	T-Rex 2-2	addiks	1522	64Y	1652	25/02

LOADOUT

A/A	A9L	GUN	100% CM
A/G	4xA65D, 2xG54, 7M282L	CHF	240
POD	TGP, A184L	FLR	240
TKS		FUEL	100%

TOLD

	Takeoff	Target	Joker	Bingo	Land
FUEL	11087				

AIRBASES

	Name	TCN	ATIS	GND	TWR	RWY	Elev	ILS
Dep	Banak	47X			250.5	34	26	109.1
Arr	Banak	47X			250.5	34	26	109.1

FLIGHTPLAN

#	Name	Navaid/Coords/DME	ALT	TOT
1	AKKOY	N70 14.166 E024 57.933	3000	
2	Hold T-Rex	N69 28.299 E025 30.678	14000	
3	C1-Center	N69 23.854 E025 51.381		
4	C2-West	N69 22.706 E026 16.039		
5	C2-South	N69 08.188 E027 13.520		
6	C2-Center	N69 14.356 E027 14.793		
7	C2-East	N69 23.317 E027 39.944		
8	C2-North	N69 37.672 E027 06.836		
9	B2-Center	N68 54.414 E027 00.942		
10	PORSANG	N69 53.900 E025 00.483	3500	
11	Init34	N69 57.644 E024 59.897	2500	
12	BANAK	N70 04 E024 58.433		

COMMS

Radio	Usage
1	132.25
2	250.5 - 16 - 250.5
3	32.00

NOTES

- IFF Mode 1 => 32 and ON
QNH 2999

OTHER FLIGHTS

Callsign	Mission	Airframe	Freq	TCN	Grpld	Laser
Raptor 1	CAP	4x F-16C	134.0	1/64		162X
AO	CAP South	Task	CAP			
Monster 1	CAS	3x A-10C	132.15	1/64	21	161X
AO	BRAVO 2	Task	A2G			
Panther 1	Strike	4x F/A-18C	261.35	1/64		157X
AO	Ship Strike	Task	Ship Striker			
Tiger 1	Strike	4x F/A-18C	261.15	1/64		155X
AO	Ship Strike	Task	Ship Striker			
Raptor 2	CAS	4x F-16C	134.5	1/64		162X
AO	CHARLIE/DELTA2	Task	CAS C2, D2; Recce SA-10 Kirkenes			
Rattler 2	BAI	2x AH-64D	133.5	1/64		125X
AO	Alpha2 + 3	Task	BAI			
Joker* 1	Transport	1x CH-47F	264.05	1/64		170X
AO	Alpha2 + 3	Task				
Nazgul 6	CAP	4x F-15E	262.45	1/64		156X
AO	CAP North	Task	CAP for Monster, T-Rex			

RADIO CHANNELS

#	Freq	Name
1		Flight/Squadron specific
2	282.8	Rovaniemi ATIS
3	282.5	Rovaniemi Ground
4	250.55	Rovaniemi Tower
5	320.7	Bodo ATIS
6	250.75	Bodo Tower
7	235.45	Kallax ATIS
8	250.3	Kallax Tower
9	265.0	Texaco-1 KC-135 Medium / Slow 71Y
10	319.8	Arco-1 KC-135 High / Fast 22Y
11	360.8	Shell-1 KC-135 MPRS High / Fast 41Y
12	304.0	CVN-71 Rough Rider (RRR) 71X
13	303.0	LHA-1 Tarawa (TWA) 79X
14	247.8	S-3B Mauler-1 (MAU) 64Y
15	347.8	Loki (E-2D)
16	348.7	Heimdall (E-3A)
17	242.17	ESR02 - CAS Range Operator
18	34.7	ESR02 - JTAC Odin
19	270.5	Blue
20	270.75	Red

RAMROD

0	1	2	3	4	5	6	7	8	9
P	U	R	G	A	T	I	V	E	S

KTC 1400 C

	0	1	2	3	4	5	6	7	8	9
A	TLHC	SGP	ODJ	XN	YF	WRV	BU	MK	IE	AQ
B	YXWT	GUQ	AHV	PK	OF	NSL	IJ	MB	RC	DE
C	SXIT	LGP	AHO	JK	VR	ECM	DN	FW	UY	QB
D	RYIN	QCD	OTJ	PW	GB	XUK	FE	AM	SL	VH
E	RMGV	WPQ	CSJ	EN	ID	THK	XF	UA	OY	BL
F	SNAX	BIW	EHP	VK	LQ	YOF	DG	CM	JT	UR
G	EQNC	XAL	OKF	WB	HU	DJY	MS	PI	VG	TR
H	JHDV	IGX	YSP	WF	MT	NUA	BE	KL	QC	OR
I	PCRY	DSL	EMA	XN	VH	KFW	TQ	GU	OB	JI
J	SJHE	MPG	IAX	VQ	YR	WKF	NT	UC	BO	DL
K	ADNU	WKR	BCF	JG	QO	XTE	MV	SI	LY	HP
L	CWFU	DSY	ETK	AV	NR	GMB	QL	PH	OX	IJ
M	RTQA	UVG	NDL	KI	PB	JWF	XE	HO	SY	MC
N	GYCD	QEP	SVB	TW	HF	IRU	MA	OK	LX	NJ
O	XWTP	HDQ	YIE	NB	GV	CJL	UK	FR	SO	MA
P	XVIG	EQJ	KTW	HY	MF	LRB	UP	OC	SD	NA
Q	KRHW	TJA	SPN	XD	QO	LMI	BU	VE	GC	YF
R	PWRY	SLO	VGQ	KI	UM	CTX	JB	HA	FE	DN
S	ELUM	AQF	PBY	NH	XJ	WID	CR	VO	TK	SG
T	TEDL	JYW	XSC	PF	QU	AKI	BH	VR	NG	MO
U	QIDB	PHF	JXC	VY	UR	GSL	NE	KO	TW	AM
V	LPAW	CKJ	OYH	QV	MU	GFD	TS	IB	RN	XE
W	ABPL	OXM	DTG	EH	NQ	KWV	IU	JY	CR	SF
X	VOMU	XER	CND	GA	KB	FJI	TL	YQ	PS	WH
Y	GCIA	FJX	PSK	WU	LM	YED	BO	NR	QV	HT

NAVAIDS

Id	Name	Channel	Position	Elevation
BOO	Bodo	45	N67 15.838 E014 20.046	43
BNK	Banak	47	N70 03.937 E024 58.181	17
OYA	Andoya	28	N69 17.175 E016 08.658	19

TWR/GND : 250.50
Heimdall : 348.7

Var 13° E

91
RWY 16 THR Elev 16ft
2785 x 45 Grooved Concrete / Asphalt



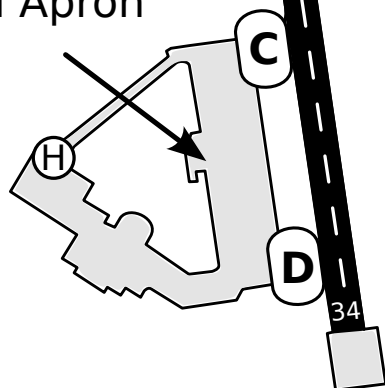
General Aviation

BNK
CH 47



Civ Apron

Mil Apron



RWY 34 THR Elev 25ft



BANAK TOWER
250.500
HEIMDALL
348.700

VMC ONLY
AD elev 26ft

AKKOY

RODDE

BNA VOR/DME
114.4 Ch 91X

VAR 13°E

Remain below
1000ft MSL until DER

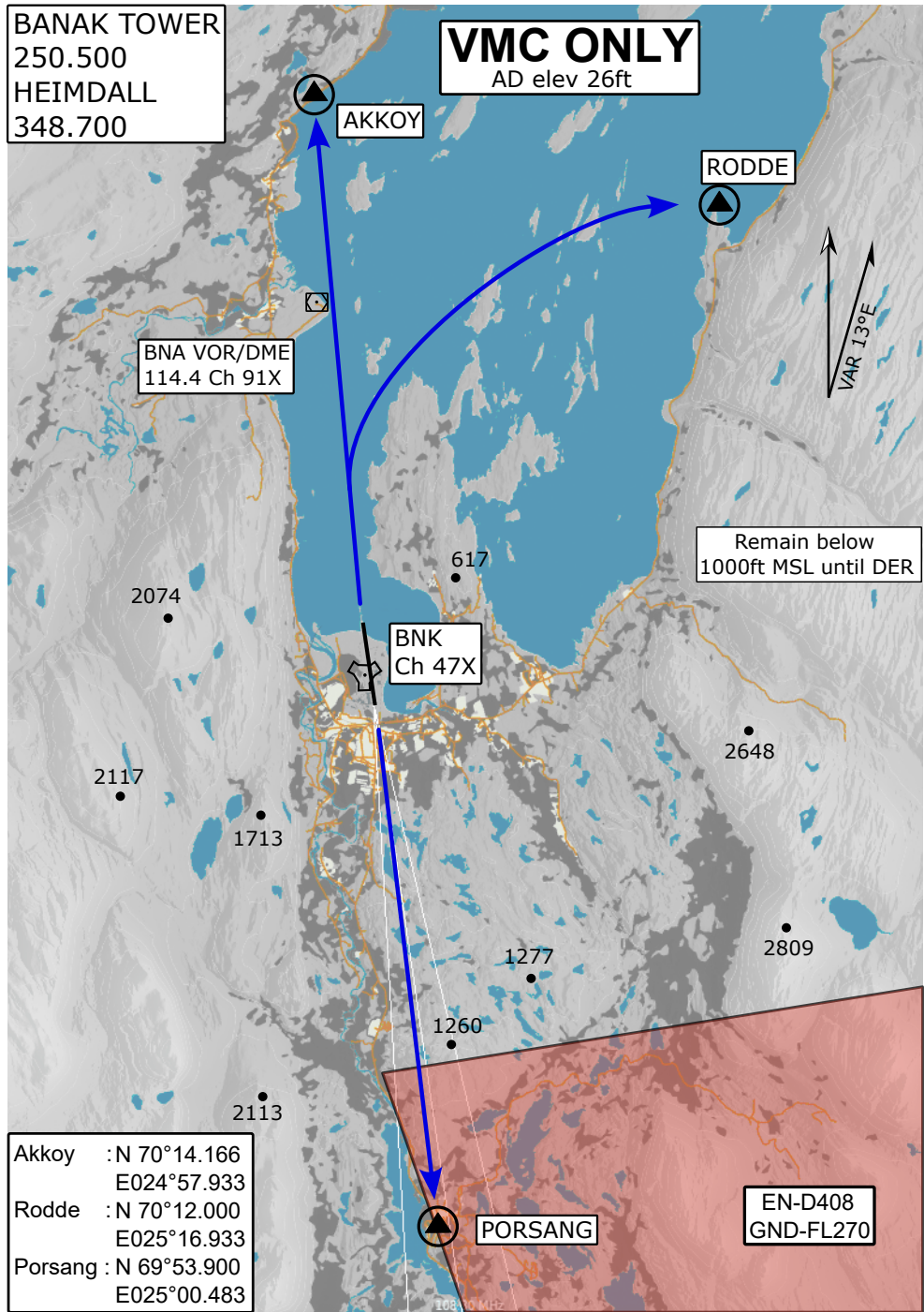
BNK
Ch 47X

Akkoym : N 70°14.166
E024°57.933
Rodde : N 70°12.000
E025°16.933
Porsang : N 69°53.900
E025°00.483

PORSANG

EN-D408
GND-FL270

VISUAL DEPARTURE ROUTES JETS



BANAK (ENNA)

Visual ARR JET Rwy 16/34 VAD-CHART | VALID 2025 Lakselv, Norway

BANAK TOWER
250.500
HEIMDALL
348.700

VMC ONLY
AD elev 26ft

VAR 13°E

AKKOY

RODDE

Initial 16

BNA VOR/DME
114.4 Ch 91X

OHB east of AD
at 1500ft MSL

BNK
Ch 47X

Initial 34

PORSANG

EN-D408
GND-FL270

Akkooy : N 70°14.166
E024°57.933
Rodde : N 70°12.000
E025°16.933
Porsang : N 69°53.900
E025°00.483

VISUAL ARRIVAL ROUTES JETS

v.10 11.SEP25

v.10 11.SEP25 STTR NAV CHART