

**MISSION DATA CARD**

OPORD		Callsign		Mission		Date/Time	
4268/2025		Monster 1		CAS		112000DEC25	
Task	A2G						Freq
AO	BRAVO 2						132.15
Departure				Recovery			
VFR Departure RWY 16/34				ILS or LOC RWY 34			
#	Callsign	Pilot	IFF	TCN	LSR	NET	
-1	Monster 1-1	Toolface	1411	1Y	1611	21/01	
-2	Monster 1-2	Lenzi	1412	64Y	1612	21/02	
-3	Monster 1-3	Stoner	1413	64X	1613	21/03	

**LOADOUT**

A/A	2xA9L	GUN	100% CM
A/G	4xA65D, 4xG54, 7M282L	CHF	240
POD	TGP, A184L	FLR	240
TKS		FUEL	100%

**TOLD**

	Takeoff	Target	Joker	Bingo	Land
FUEL	11087				

**AIRBASES**

	Name	TCN	ATIS	GND	TWR	RWY	Elev	ILS
Dep	Banak	47X			250.5	34	26	109.1
Arr	Banak	47X			250.5	34	26	109.1

**FLIGHTPLAN**

#	Name	Navaid/Coords/DME	ALT	TOT
1	AKKOY	N70 14.166 E024 57.933	3000	
2	HoldMonster12	N68 58.634 E025 06.842	12000	
3	B1-XRoad	N68 54.157 E025 42.262		
4	B2-West	N68 55.696 E026 18.030		
5	5	N68 57.021 E026 41.337		
6	6	N68 55.627 E026 57.383		
7	B2-Center	N68 54.414 E027 00.942		
8	8	N68 49.280 E026 39.173		
9	9	N68 43.314 E026 22.814		
10	B2-South	N68 39.766 E026 18.601		
11	11	N68 48.665 E027 20.860		
12	Ivalo	N68 36.446 E027 24.352		
13	B2-East	N69 05.995 E027 39.430		
14	B2-North	N69 08.188 E027 13.520		
15	PORSANG	N69 53.900 E025 00.483	3500	
16	Init34	N69 57.644 E024 59.897	2500	
17	BANAK	N70 04 E024 58.433		

**COMMS**

Radio	Usage
1	132.15
2	250.5 - 16 - 250.5
3	32.00

## NOTES

- IFF Mode 1 => 32 and ON  
Runway 34... 352

## OTHER FLIGHTS

Callsign	Mission	Airframe	Freq	TCN	Grpld	Laser
Raptor 1	CAP	4x F-16C	134.0	1/64		162X
AO	CAP South	Task	CAP			
T-Rex 2	CAS	3x A-10C	132.25	1/64	25	165X
AO	CHARLIE 2	Task	A2G			
Panther 1	Strike	4x F/A-18C	261.35	1/64		157X
AO	Ship Strike	Task	Ship Striker			
Tiger 1	Strike	4x F/A-18C	261.15	1/64		155X
AO	Ship Strike	Task	Ship Striker			
Raptor 2	CAS	4x F-16C	134.5	1/64		162X
AO	CHARLIE/DELTA2	Task	CAS C2, D2; Recce SA-10 Kirkenes			
Rattler 2	BAI	2x AH-64D	133.5	1/64		125X
AO	Alpha2 + 3	Task	BAI			
Joker* 1	Transport	1x CH-47F	264.05	1/64		170X
AO	Alpha2 + 3	Task				
Nazgul 6	CAP	4x F-15E	262.45	1/64		156X
AO	CAP North	Task	CAP for Monster, T-Rex			

## RADIO CHANNELS

#	Freq	Name
1		Flight/Squadron specific
2	282.8	Rovaniemi ATIS
3	282.5	Rovaniemi Ground
4	250.55	Rovaniemi Tower
5	320.7	Bodo ATIS
6	250.75	Bodo Tower
7	235.45	Kallax ATIS
8	250.3	Kallax Tower
9	265.0	Texaco-1   KC-135   Medium / Slow   71Y
10	319.8	Arco-1   KC-135   High / Fast   22Y
11	360.8	Shell-1   KC-135 MPRS   High / Fast   41Y
12	304.0	CVN-71 Rough Rider (RRR)   71X
13	303.0	LHA-1 Tarawa (TWA)   79X
14	247.8	S-3B Mauler-1 (MAU)  64Y
15	347.8	Loki (E-2D)
16	348.7	Heimdall (E-3A)
17	242.17	ESR02 - CAS Range Operator
18	34.7	ESR02 - JTAC Odin
19	270.5	Blue
20	270.75	Red

**RAMROD**

0	1	2	3	4	5	6	7	8	9
P	U	R	G	A	T	I	V	E	S

**KTC 1400 C**

	0	1	2	3	4	5	6	7	8	9
A	TLHC	SGP	ODJ	XN	YF	WRV	BU	MK	IE	AQ
B	YXWT	GUQ	AHV	PK	OF	NSL	IJ	MB	RC	DE
C	SXIT	LGP	AHO	JK	VR	ECM	DN	FW	UY	QB
D	RYIN	QCD	OTJ	PW	GB	XUK	FE	AM	SL	VH
E	RMGV	WPQ	CSJ	EN	ID	THK	XF	UA	OY	BL
F	SNAX	BIW	EHP	VK	LQ	YOF	DG	CM	JT	UR
G	EQNC	XAL	OKF	WB	HU	DJY	MS	PI	VG	TR
H	JHDV	IGX	YSP	WF	MT	NUA	BE	KL	QC	OR
I	PCRY	DSL	EMA	XN	VH	KFW	TQ	GU	OB	JI
J	SJHE	MPG	IAX	VQ	YR	WKF	NT	UC	BO	DL
K	ADNU	WKR	BCF	JG	QO	XTE	MV	SI	LY	HP
L	CWFU	DSY	ETK	AV	NR	GMB	QL	PH	OX	IJ
M	RTQA	UVG	NDL	KI	PB	JWF	XE	HO	SY	MC
N	GYCD	QEP	SVB	TW	HF	IRU	MA	OK	LX	NJ
O	XWTP	HDQ	YIE	NB	GV	CJL	UK	FR	SO	MA
P	XVIG	EQJ	KTW	HY	MF	LRB	UP	OC	SD	NA
Q	KRHW	TJA	SPN	XD	QO	LMI	BU	VE	GC	YF
R	PWRY	SLO	VGQ	KI	UM	CTX	JB	HA	FE	DN
S	ELUM	AQF	PBY	NH	XJ	WID	CR	VO	TK	SG
T	TEDL	JYW	XSC	PF	QU	AKI	BH	VR	NG	MO
U	QIDB	PHF	JXC	VY	UR	GSL	NE	KO	TW	AM
V	LPAW	CKJ	OYH	QV	MU	GFD	TS	IB	RN	XE
W	ABPL	OXM	DTG	EH	NQ	KWV	IU	JY	CR	SF
X	VOMU	XER	CND	GA	KB	FJI	TL	YQ	PS	WH
Y	GCIA	FJX	PSK	WU	LM	YED	BO	NR	QV	HT

**NAVAIDS**

Id	Name	Channel	Position	Elevation
BOO	Bodo	45	N67 15.838 E014 20.046	43
BNK	Banak	47	N70 03.937 E024 58.181	17
OYA	Andoya	28	N69 17.175 E016 08.658	19

TWR/GND : 250.50  
Heimdall : 348.7

Var 13° E

91  
RWY 16 THR Elev 16ft  
2785 x 45 Grooved Concrete / Asphalt



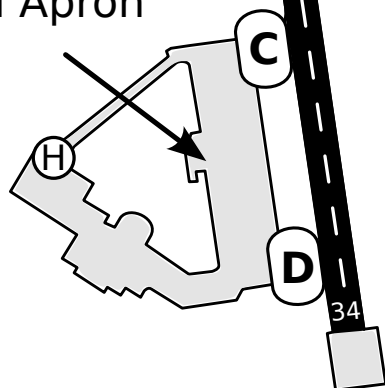
General Aviation

BNK  
CH 47



Civ Apron

Mil Apron



RWY 34 THR Elev 25ft





BANAK TOWER  
250.500  
HEIMDALL  
348.700

**VMC ONLY**  
AD elev 26ft

AKKOY

RODDE

BNA VOR/DME  
114.4 Ch 91X

VAR 13°E

Remain below  
1000ft MSL until DER

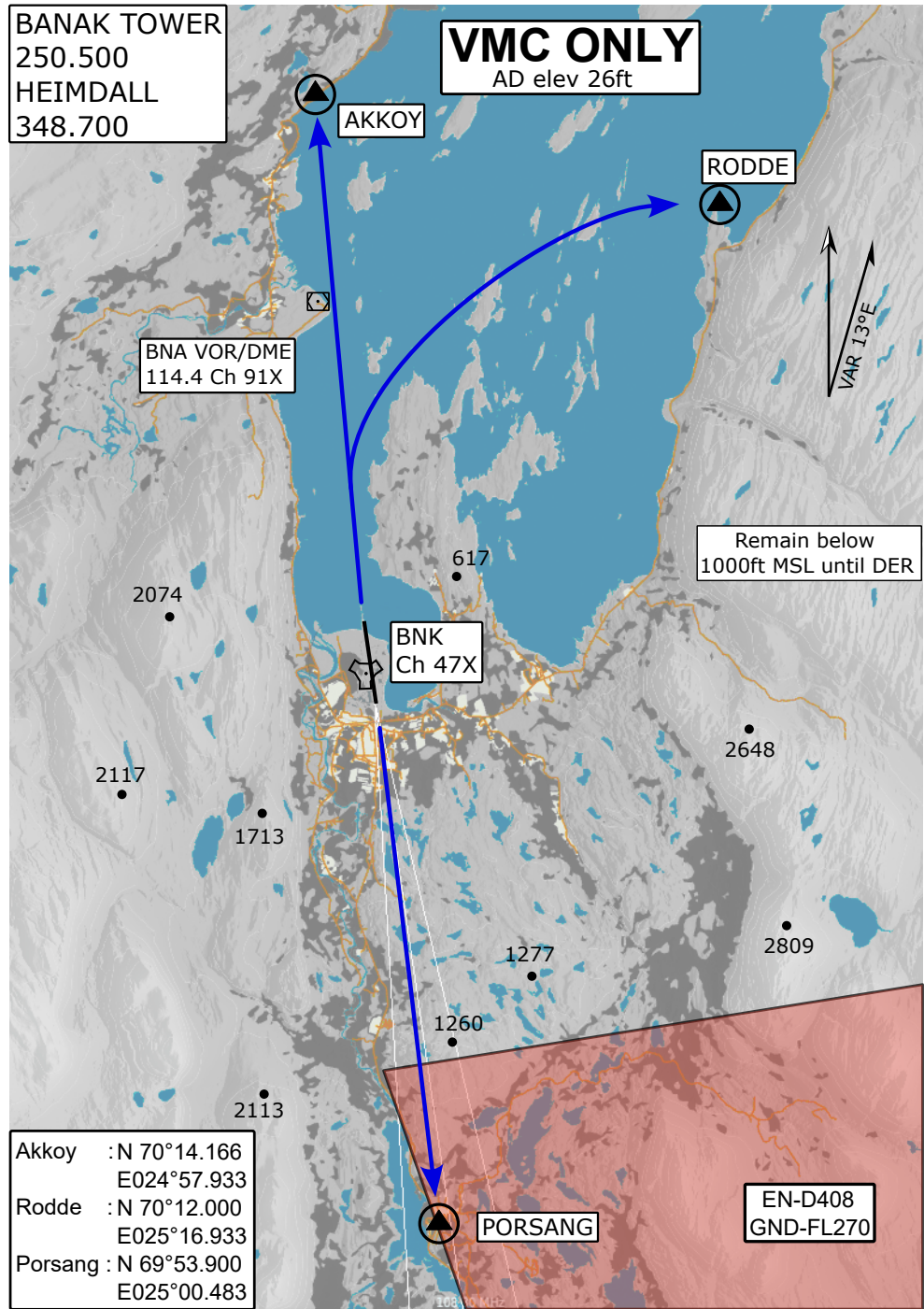
BNK  
Ch 47X

Akkoym : N 70°14.166  
E024°57.933  
Rodde : N 70°12.000  
E025°16.933  
Porsang : N 69°53.900  
E025°00.483

PORSANG

EN-D408  
GND-FL270

**VISUAL DEPARTURE ROUTES JETS**



# MIPS INSTRUMENT APPROACH CHART

AD ELEV 26

HPMA ILS or LOC RWY 34  
BANAK (ENNA)

ATIS  
N/A

BANAK TWR / APPR  
250.50 / 348.7

LOCALIZER/DME BA 108.300 / CH 20X	APP COURSE 342°	GS INTCP ALT 3500	GS 3.5°	DA 251	THR ELEV 25	ALS 737 m	LDA 8543
--------------------------------------	--------------------	----------------------	------------	-----------	----------------	--------------	-------------

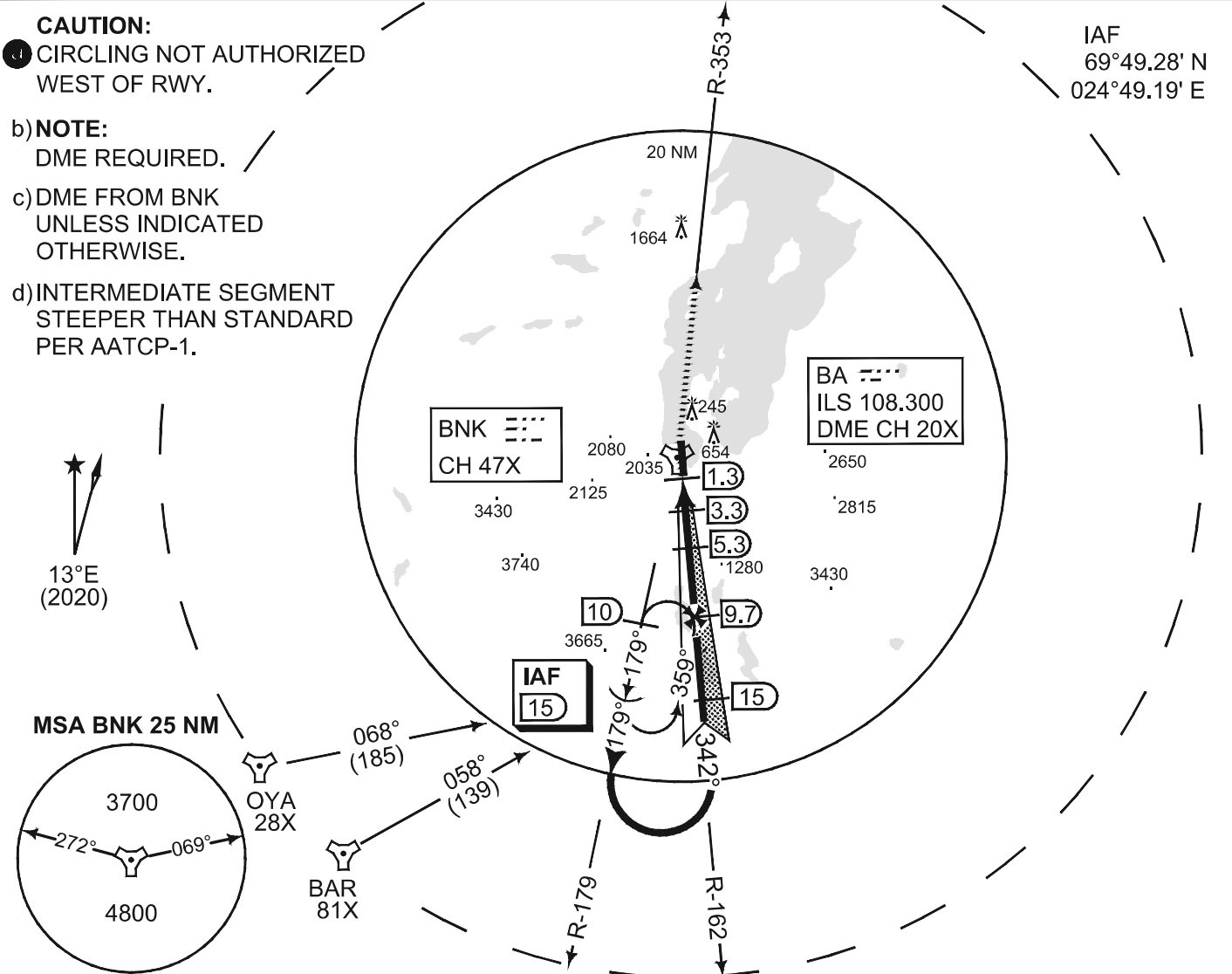
**CAUTION:**  
CIRCLING NOT AUTHORIZED WEST OF RWY.

b) **NOTE:**  
DME REQUIRED.

c) DME FROM BNK UNLESS INDICATED OTHERWISE.

d) INTERMEDIATE SEGMENT STEEPER THAN STANDARD PER AATCP-1.

IAF  
69°49.28' N  
024°49.19' E

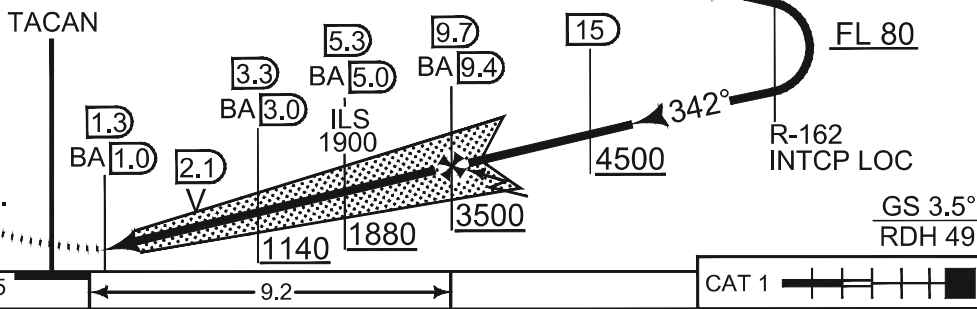


**SAFE ALT 100 NM 7400**

DME	2	3	4	5	6	7	8	9
ALT BNK	-	1000	1380	1760	2140	2520	2910	3290
ALT BA	760	1130	1510	1890	2270	2660	3040	3430

FL 100 IAF (15) LEFT TURN TA 7000  
FL 90 -R-179 AT (20)  
FL 80

**MISSED APPROACH**  
Climb straight ahead. When passing 500 ft, intercept BNK R-353 outbound. Passing 4000 ft, turn right DCT BNK. Passing BNK continue outbound on R-179 to IAF. Climb to FL 090.



THR ELEV 25 | 9.2 | CAT 1

CATEGORY	HPMA
S-ILS 34	251 - 550 226 (300 - 0.8/1.2)
S-LOC 34	670 - 2300 645 (700 - 2.3/3.0)
CIRCLING	1100 - 3.2 1074 (1100 - 3.2)

HPMA ILS or LOC RWY 34

70°04.00' N  
024°58.43' E

BANAK (ENNA)

vJaBoG32