

MISSION DATA CARD

OPORD		Callsign		Mission		Date/Time		
4251/2025		Raptor 1		Training		012000DEC25		
Task							Freq	
AO							134.0	
Departure				Recovery				
VFR Departure				VFR Approach				
#	Callsign		Pilot		IFF	TCN	LSR	NET
-1	Raptor 1-1		Hercules		1611	1Y	1621	
-2	Raptor 1-2		Hawk		1612	64Y	1622	

LOADOUT

A/A							GUN	
A/G							CHF	
POD							FLR	
TKS							FUEL	

TOLD

	Takeoff	Target	Joker	Bingo	Land
FUEL	7163				

AIRBASES

	Name		TCN	ATIS	GND	TWR	RWY	Elev	ILS
Dep	Rovaniemi		14X	282.8	282.5	250.55	21	643	111.7
Arr	Rovaniemi		14X	282.8	282.5	250.55	21	643	111.7

FLIGHTPLAN

#	Name	Navaid/Coords/DME	ALT	TOT
1	IMARI	N66 28.406 E025 31.291	3500	
2	PERUN	N66 44.135 E026 01.630	3500	
3	IBSAN	N66 42.500 E025 01.083	10000	
4	NAFFI	N67 04.630 E023 11.660	15000	
5	ENOXI	N66 54.960 E021 38.780	15000	
6	T.ESR04.Conv oy	N65 58.503 E021 36.744	71	

SUPPORT**Tanker**

Callsign	TCN	Freq	ALT	TAS
ARCO 1	22Y	319.8		

Pos

AWACS

Callsign	Freq	ALT	Pos
HEIMDALL	348.7		

OTHER FLIGHTS

Callsign	Mission	Airframe	Freq	TCN	Grpld	Laser
Heavy* 1	Training	1x E-3A	255.05	1/64	1	170X
AO		Task	ROTKO 1S			
Tiger 1	Training	4x F/A-18C	261.15	1/64		155X
AO	ESR01	Task	SEAD			
Rattler	Training	2x AH-64D	133.5	1/64		125X
AO		Task				
Hammer 1	Training	4x CH-47F	264.05	1/64		170X
AO		Task				
Monster 1	Training	4x A-10C	132.15	1/64	21	161X
AO	ESR.03	Task				
T-Rex 2	Training	2x A-10C	132.25	1/64	25	165X
AO	ESR03	Task	A2G			

RADIO CHANNELS

#	Freq	Name
1		Flight/Squadron specific
2	282.8	Rovaniemi ATIS
3	282.5	Rovaniemi Ground
4	250.55	Rovaniemi Tower
5	320.7	Bodo ATIS
6	250.75	Bodo Tower
7	235.45	Kallax ATIS
8	250.3	Kallax Tower
9	265.0	Texaco-1 KC-135 Medium / Slow 71Y
10	319.8	Arco-1 KC-135 High / Fast 22Y
11	360.8	Shell-1 KC-135 MPRS High / Fast 41Y
12	304.0	CVN-71 Rough Rider (RRR) 71X
13	303.0	LHA-1 Tarawa (TWA) 79X
14	247.8	S-3B Mauler-1 (MAU) 64Y
15	347.8	Loki (E-2D)
16	348.7	Heimdall (E-3A)
17	242.17	ESR02 - CAS Range Operator
18	34.7	ESR02 - JTAC Odin
19	270.5	Blue
20	270.75	Red

RAMROD

0	1	2	3	4	5	6	7	8	9
B	O	Y	F	R	I	E	N	D	S

KTC 1400 C

	0	1	2	3	4	5	6	7	8	9
A	WQNV	RET	YDS	IX	HC	MKO	UF	AL	JB	PG
B	XVRL	GTS	APW	CK	OY	ENJ	DU	MF	BH	IQ
C	ULDI	RME	AFN	CO	XT	BHG	KY	QJ	SV	PW
D	WULA	HBC	MXO	PS	QE	IFK	DN	GR	VJ	YT
E	VRJI	CLA	MEH	BS	TO	NYG	XQ	PD	UF	WK
F	LDNY	HBW	VEP	JR	IO	GFQ	SU	AK	CX	MT
G	NKYB	GLA	EVT	JH	XO	PRS	UI	QM	DF	CW
H	HGSR	FCO	TMB	VQ	ND	AUW	PK	LX	JY	EI
I	WBTG	MXR	KUN	FI	DS	VHO	AE	YJ	QP	CL
J	GMYE	NCO	WIB	FA	QR	TUH	LJ	VX	PD	KS
K	JURK	CEL	PGA	YN	IH	DOQ	ST	VM	XF	BW
L	UKNB	WGX	LFO	CH	TP	QRA	DM	SE	VI	YJ
M	OBVT	SNQ	DXG	FA	IK	JHU	LE	RW	CY	PM
N	IUTP	LRJ	XDN	SV	WQ	YAK	EM	FC	GB	HO
O	IHRN	CBD	UFE	AQ	ML	SOY	VW	GX	TJ	KP
P	VKFI	ETU	AOY	JN	XB	PCD	QS	LH	GM	RW
Q	WXGM	ILD	NUR	HP	TA	OSE	FC	YJ	BK	QV
R	GAJR	NYT	OXL	VD	FK	SQH	BI	MU	EP	WC
S	BOXS	KHI	WFD	UY	MR	LJV	QP	EG	TA	NC
T	RHBF	GUI	KEY	JQ	XN	AOM	PL	DC	TW	SV
U	RCWJ	UAM	IYN	SF	PG	TDL	QB	KE	HV	OX
V	PFRX	KMB	NEC	UL	WH	STG	DO	IV	JA	QY
W	KOIB	AWT	HVJ	XY	FS	NUD	QG	LE	CP	RM
X	TASN	REU	LQJ	VO	GM	HWC	FD	IP	YK	BX
Y	DNJQ	FRB	USW	YA	HX	LCE	GT	VM	KO	PI

NAVAIDS

Id	Name	Channel	Position	Elevation
BOO	Bodo	45	N67 15.838 E014 20.046	43
BNK	Banak	47	N70 03.937 E024 58.181	17
OYA	Andoya	28	N69 17.175 E016 08.658	19

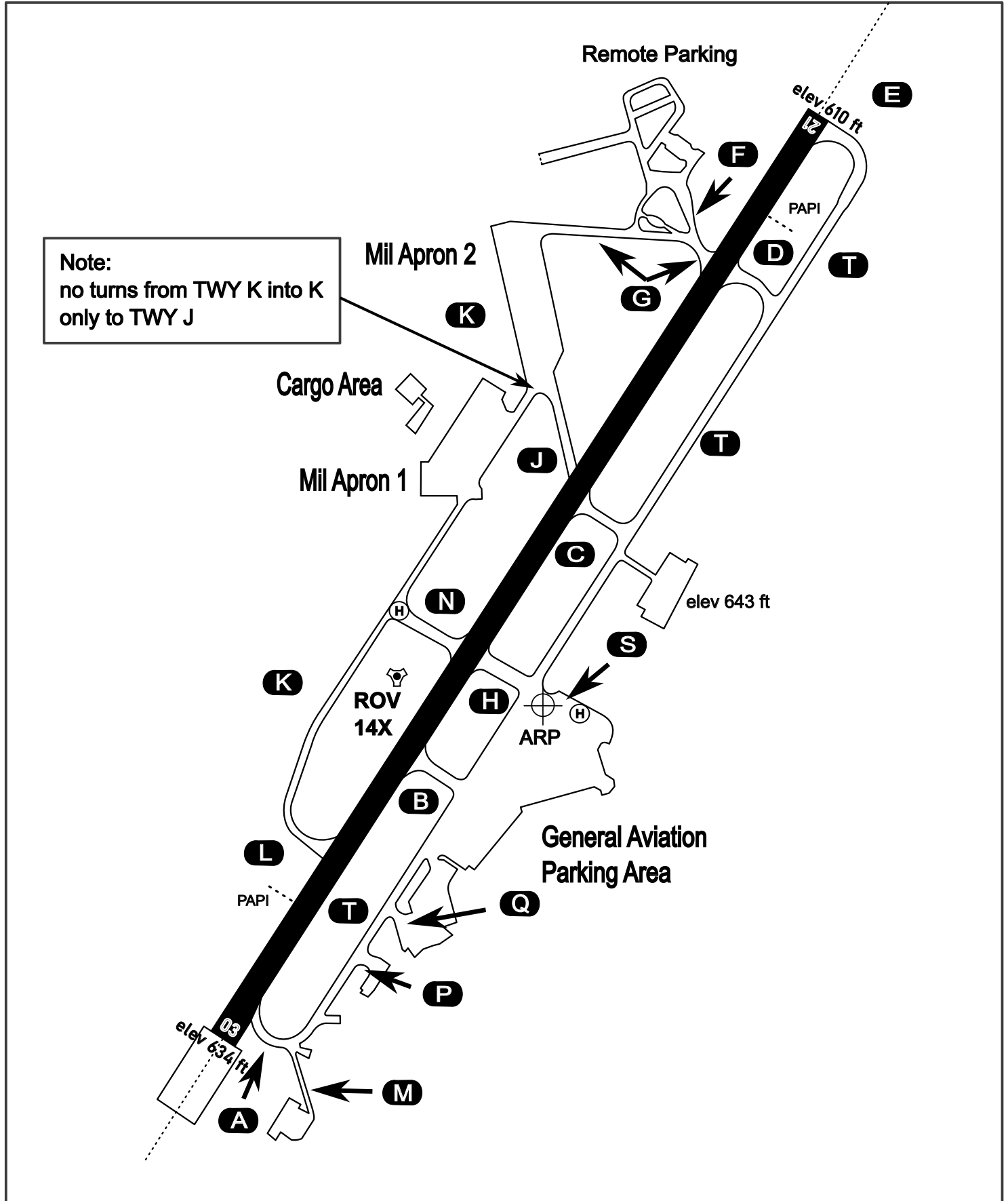
AERODROME CHART

Rovaniemi Aerodrome

ARP N66° 33' 42" E025° 49' 51"

elev 643 ft

ROVANIEMI, FINLAND

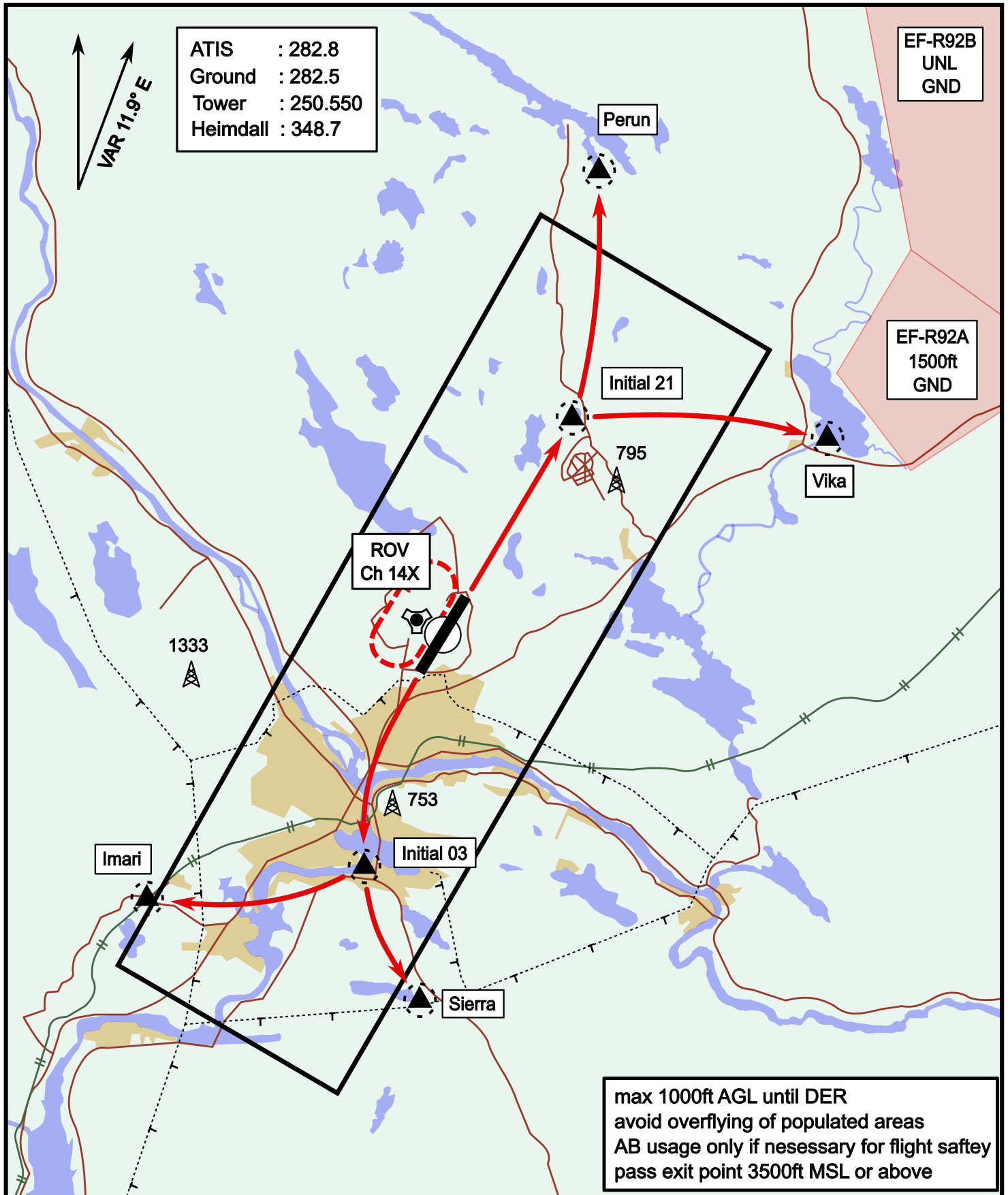


ATIS	Ground	Tower	Radar
282.800	282.500	250.550	348.700

Visual Departure Jet

elev 643 ft

Rovaniemi, Finland

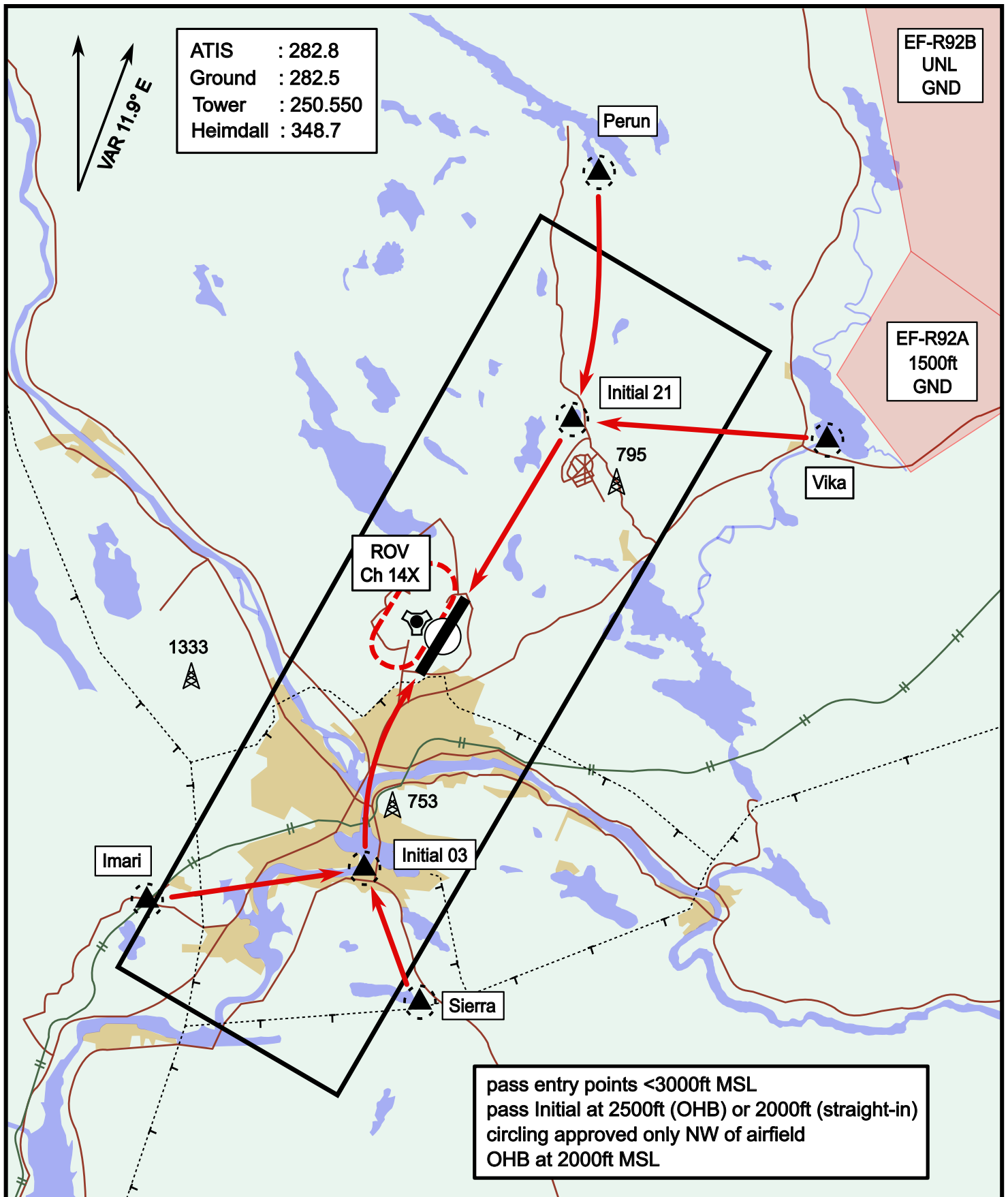


Vika	N66° 37.474 / E026° 13.557	Sierra	N66° 25.711 / E025° 46.610
Perun	N66° 44.135 / E026° 01.630	Imari	N66° 28.406 / E025° 31.291
Initial21	N66° 38.421 / E025° 58.682	Initial03	N66° 28.793 / E025° 44.105

Visual Approach Jet

elev 643 ft

Rovaniemi, Finland



Vika	N66° 37.474 / E026° 13.557	Sierra	N66° 25.711 / E025° 46.610
Perun	N66° 44.135 / E026° 01.630	Imari	N66° 28.406 / E025° 31.291
Initial21	N66° 38.421 / E025° 58.682	Initial03	N66° 28.793 / E025° 44.105