

MISSION DATA CARD

OPORD		Callsign		Mission		Date/Time		
4224/2025		Monster 1		Training		172000NOV25		
Task	Training					Freq		
AO	R92B					132.15		
Departure				Recovery				
VFR Departure				VFR Approach				
#	Callsign		Pilot		IFF	TCN	LSR	NET
-1	Monster 1-1		Marsy		1411	1Y	1611	21/01
-2	Monster 1-2		Toolface		1412	64Y	1612	21/02

LOADOUT

A/A	A9L				GUN	100% CM	
A/G	4xA65D, 2xG54, 7M282L				CHF	240	
POD	TGP, A184L				FLR	240	
TKS					FUEL	100%	

TOLD

	Takeoff	Target	Joker	Bingo	Land
FUEL	11087				

AIRBASES

	Name	TCN	ATIS	GND	TWR	RWY	Elev	ILS
Dep	Rovaniemi	14X	282.8	282.5	250.55	21	643	111.7
Arr	Rovaniemi	14X	282.8	282.5	250.55	21	643	111.7
Div	Kallax		235.45		250.3	32	66	109.9

FLIGHTPLAN

#	Name	Navaid/Coords/DME	ALT	TOT
1	RVNInit03	N66 28.793 E025 44.105	2000	
2	SIERRA	N66 25.711 E025 46.610	4000	
3	R92B.ENTRY. SOUTH	N66 39.117 E026 25.200	12000	
4	PERUN	N66 44.135 E026 01.630	3500	
5	RVNInit21	N66 38.642 E025 58.682	2500	

COMMS

Radio	Usage
1	132.15
2	2-4-16-2-4
3	32.00

NOTES

- IFF Mode 1 => 32 ON

OTHER FLIGHTS

Callsign	Mission	Airframe	Freq	TCN	Grpld	Laser
Raptor 1	Training	4x F-16C	134.0	1/64		162X
AO	ESR03	Task	LGB			
Tiger 1	Training	2x F/A-18C	261.15	1/64		155X
AO	ENR01	Task	A2A			
Rattler 1	Training	3x AH-64D	133.5	1/64		125X
AO		Task				
Raptor 2	Training	4x F-16C	134.25	1/64		162X
AO	ESR03	Task	LGB			
T-Rex 2	Training	4x A-10C	132.25	1/64	25	165X
AO	R92B	Task	Training			

RADIO CHANNELS

#	Freq	Name
1		Flight/Squadron specific
2	282.8	Rovaniemi ATIS
3	282.5	Rovaniemi Ground
4	250.55	Rovaniemi Tower
5	320.7	Bodo ATIS
6	250.75	Bodo Tower
7	235.45	Kallax ATIS
8	250.3	Kallax Tower
9	265.0	Texaco-1 KC-135 Medium / Slow 71Y
10	319.8	Arco-1 KC-135 High / Fast 22Y
11	360.8	Shell-1 KC-135 MPRS High / Fast 41Y
12	304.0	CVN-71 Rough Rider (RRR) 71X
13	303.0	LHA-1 Tarawa (TWA) 79X
14	247.8	S-3B Mauler-1 (MAU) 64Y
15	347.8	Loki (E-2D)
16	348.7	Heimdall (E-3A)
17	242.17	ESR02 - CAS Range Operator
18	34.7	ESR02 - JTAC Odin
19	270.5	Blue
20	270.75	Red

RAMROD

0	1	2	3	4	5	6	7	8	9
S	M	O	L	D	E	R	I	N	G

KTC 1400 C

	0	1	2	3	4	5	6	7	8	9
A	TLIV	SEQ	JXH	DP	YC	WFM	OK	UN	BG	AR
B	RAUN	VLD	QEC	MO	BK	WTJ	SG	FP	YI	XH
C	VEIC	PAF	UYT	LK	SW	JHM	NR	OD	BX	QG
D	SWCV	GKN	LQU	FM	HA	YEX	BD	TR	JO	PI
E	EWBH	YGM	SVN	RP	OI	DCK	AL	TU	QF	JX
F	BXTP	RYE	MQD	UN	LA	FSH	CG	WJ	KV	OI
G	IVLB	UPX	STE	FN	MA	DCR	YH	GK	OW	JQ
H	VIEO	CQN	YAJ	DX	TS	PWR	MB	KU	HF	GL
I	YCPM	EGQ	XNT	JU	DR	SHW	LF	BK	OA	IV
J	IUDY	KHM	TOG	NX	RF	PWJ	VL	CB	SA	EQ
K	XHDK	TIE	QOL	PJ	YR	NMV	GA	FS	BW	CU
L	UVLY	XWD	NQS	RA	HP	MCF	GE	KJ	BI	TO
M	HUAE	XFV	RKC	ON	SD	TIJ	PG	QL	MW	YB
N	JOGQ	KYU	AFM	RP	VX	LWC	EH	TN	SD	BI
O	ENDY	RBF	MXO	AL	QV	CUS	PK	IG	HJ	TW
P	RYBF	DQH	WEV	AK	MJ	CLS	PU	IN	TX	OG
Q	AGOH	NKJ	WDR	XI	UV	YLT	BE	SQ	PF	CM
R	EYIW	DNR	PBU	LS	OF	CTX	HM	QG	AK	JV
S	DEKP	SVB	WIR	OT	HX	CAL	QY	MN	FG	UJ
T	BPRN	ELV	KHO	JI	WA	TMD	FQ	GX	CU	YS
U	OGJB	MUV	LTQ	DC	XN	KHP	FA	RI	EY	SW
V	XALV	UNQ	DHK	TF	SG	YCE	WR	JP	OB	IM
W	WGYP	BQF	AJT	KN	RE	IHX	OS	DL	MC	UV
X	XBTY	PQW	COG	NR	LI	MSJ	EU	VD	HF	AK
Y	TOVD	BSW	PLR	EQ	CN	YFJ	KX	HM	IU	GA

NAVAIDS

Id	Name	Channel	Position	Elevation
BOO	Bodo	45	N67 15.838 E014 20.046	43
BNK	Banak	47	N70 03.937 E024 58.181	17
OYA	Andoya	28	N69 17.175 E016 08.658	19

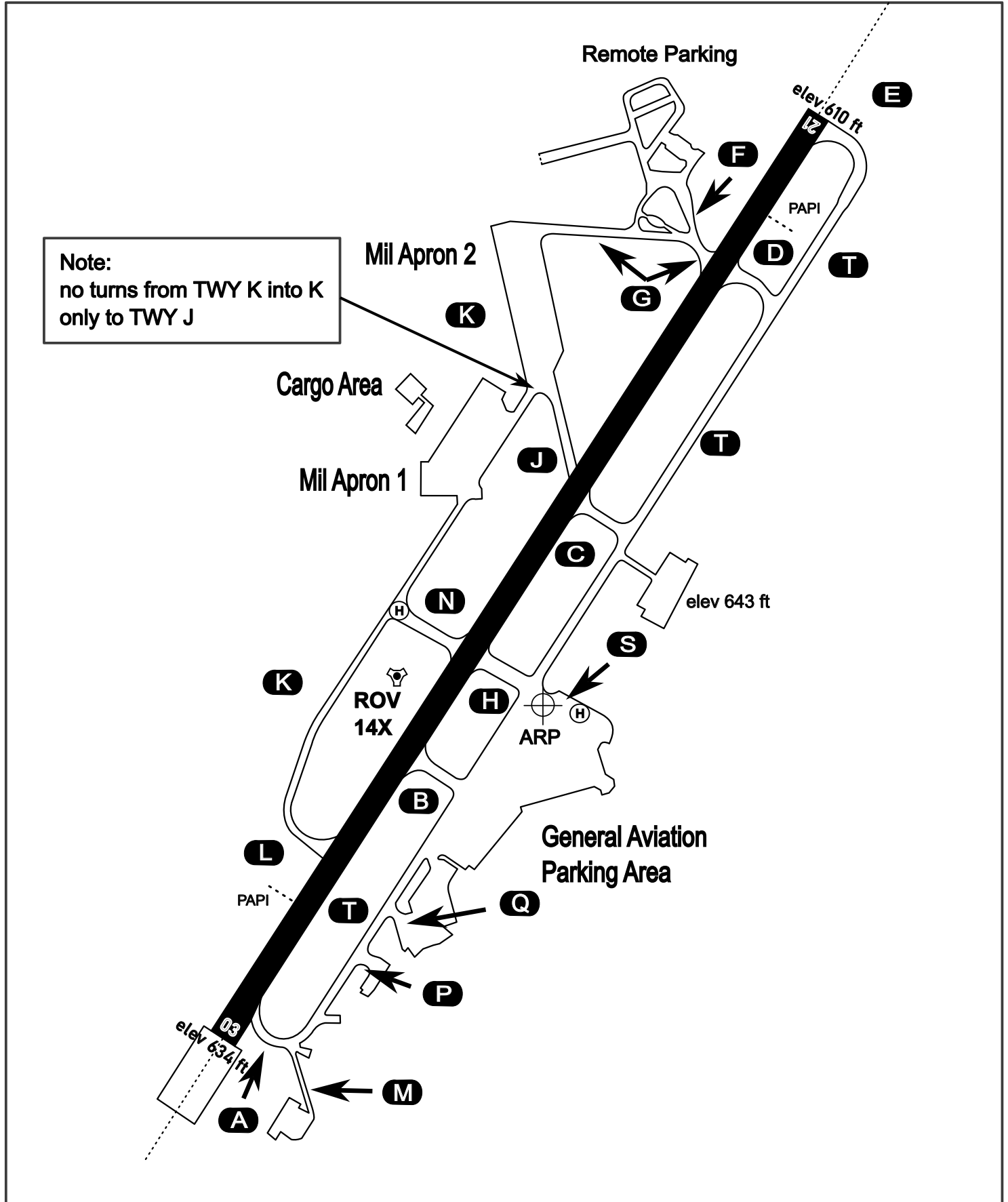
AERODROME CHART

Rovaniemi Aerodrome

ARP N66° 33' 42" E025° 49' 51"

elev 643 ft

ROVANIEMI, FINLAND

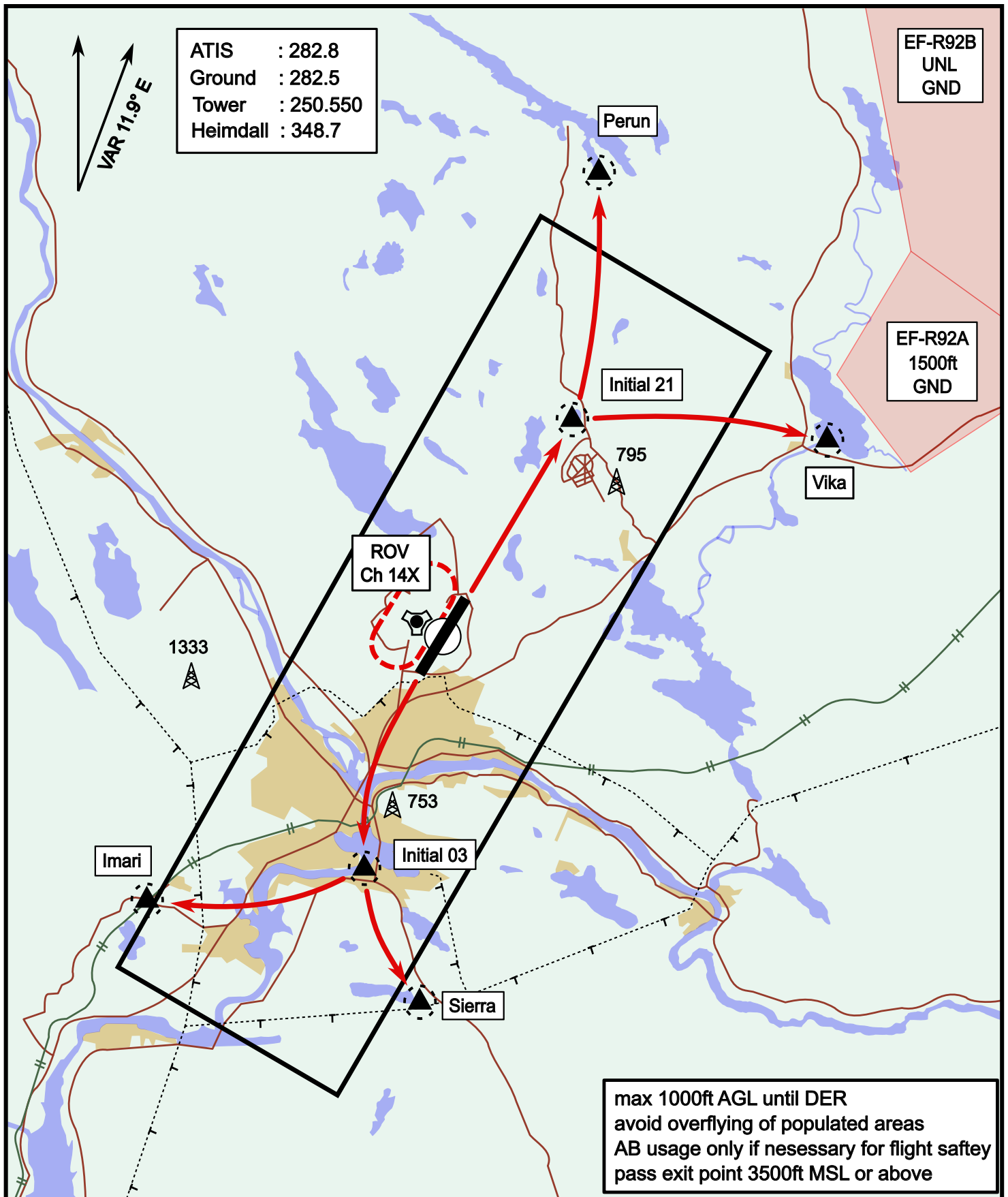


ATIS	Ground	Tower	Radar
282.800	282.500	250.550	348.700

Visual Departure Jet

elev 643 ft

Rovaniemi, Finland

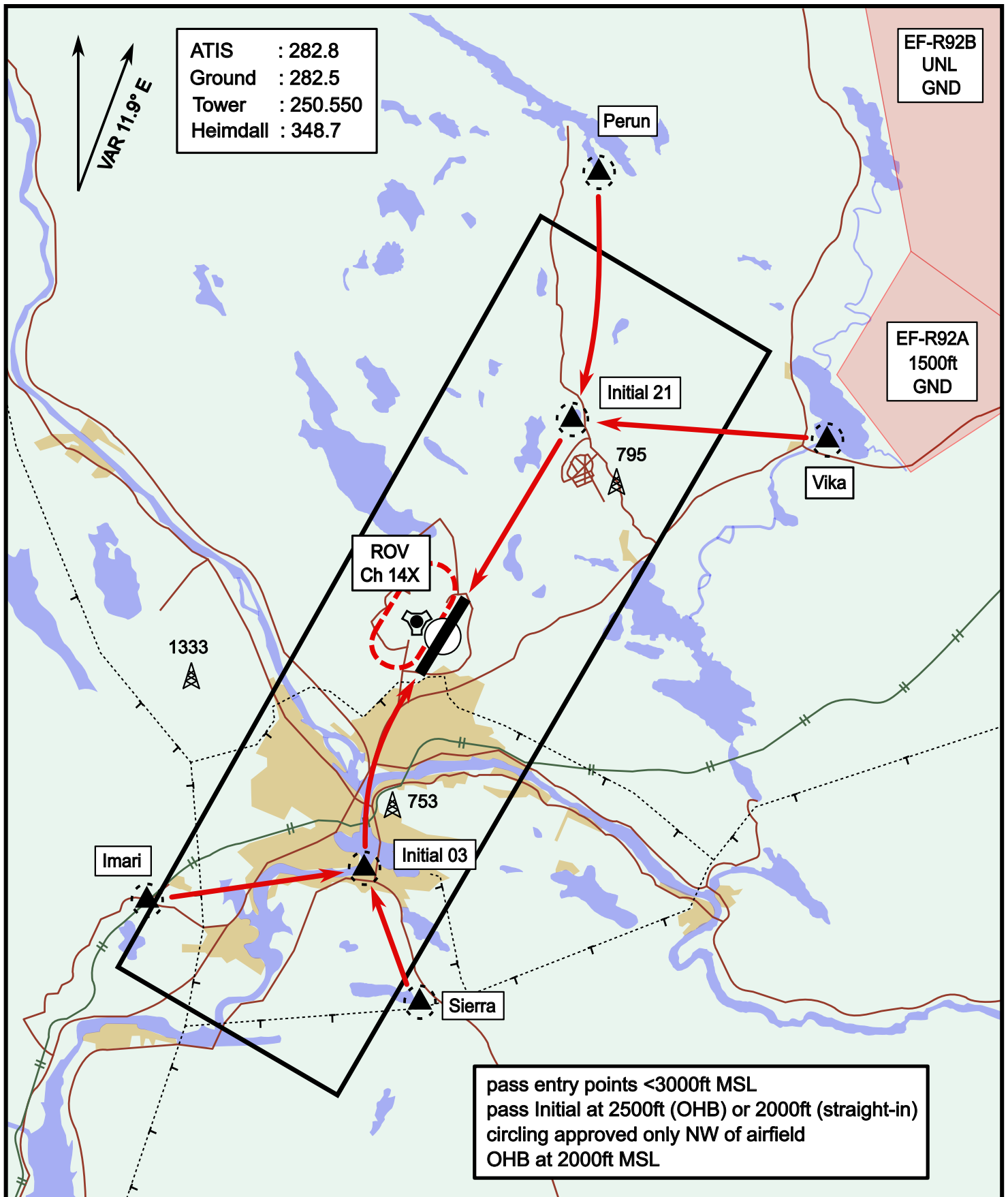


Vika	N66° 37.474 / E026° 13.557	Sierra	N66° 25.711 / E025° 46.610
Perun	N66° 44.135 / E026° 01.630	Imari	N66° 28.406 / E025° 31.291
Initial21	N66° 38.421 / E025° 58.682	Initial03	N66° 28.793 / E025° 44.105

Visual Approach Jet

elev 643 ft

Rovaniemi, Finland



Vika	N66° 37.474 / E026° 13.557	Sierra	N66° 25.711 / E025° 46.610
Perun	N66° 44.135 / E026° 01.630	Imari	N66° 28.406 / E025° 31.291
Initial21	N66° 38.421 / E025° 58.682	Initial03	N66° 28.793 / E025° 44.105

NOT AVAILABLE

NOT AVAILABLE