

MISSION DATA CARD

OPORD		Callsign		Mission		Date/Time		
4190/2025		Raptor 1		Training		022000NOV25		
Task	Convoy Hunt / Maverick Training					Freq		
AO	ESR03					134.0		
Departure				Recovery				
SID RWY 03				ILS RWY 21				
#	Callsign		Pilot		IFF	TCN	LSR	NET
-1	Raptor 1-1		Void		1611	1Y	1621	

LOADOUT

A/A	2xA120C, 2xA9X				GUN	100% SAPHEI	
A/G	4xA65D				CHF	60	
POD	HTS, A184, ATP				FLR	60	
TKS	2xFT370				FUEL	100%	

TOLD

	Takeoff	Target	Joker	Bingo	Land
FUEL	12113	9500	4000	3000	1500

AIRBASES

	Name	TCN	ATIS	GND	TWR	RWY	Elev	ILS
Dep	Rovaniemi	14X	282.8	282.5	250.55	21	643	111.7
Arr	Rovaniemi	14X	282.8	282.5	250.55	21	643	111.7
Div	Kemi Tornio	106X			250.3	36	62	110.9

FLIGHTPLAN

#	Name	Navaid/Coords/DME	ALT	TOT
1	IMARI	N66 28.406 E025 31.291	5000	
2	NEMGU	N66 20.400 E024 41.650	15000	
3	B1	N66 E023 26.198	15000	
4	B2	N65 56.302 E022 46.242	15000	
5	B3	N66 30.481 E022 48.676	15000	
6	B4	N66 33.485 E023 13.725	15000	
7	IBSAN	N66 42.500 E025 01.083	15000	
8	PERUN	N66 44.135 E026 01.630	5000	
9	RV	N66 33.902 E025 49.885	2000	

RADIO CHANNELS

#	Freq	Name
1		Flight/Squadron specific
2	282.8	Rovaniemi ATIS
3	282.5	Rovaniemi Ground
4	250.55	Rovaniemi Tower
5	320.7	Bodo ATIS
6	250.75	Bodo Tower
7	235.45	Kallax ATIS
8	250.3	Kallax Tower
9	265.0	Texaco-1 KC-135 Medium / Slow 71Y
10	319.8	Arco-1 KC-135 High / Fast 22Y
11	360.8	Shell-1 KC-135 MPRS High / Fast 41Y
12	304.0	CVN-71 Rough Rider (RRR) 71X
13	303.0	LHA-1 Tarawa (TWA) 79X
14	247.8	S-3B Mauler-1 (MAU) 64Y
15	347.8	Loki (E-2D)
16	348.7	Heimdall (E-3A)
17	242.17	ESR02 - CAS Range Operator
18	34.7	ESR02 - JTAC Odin
19	270.5	Blue
20	270.75	Red

RAMROD

0	1	2	3	4	5	6	7	8	9
O	U	T	L	A	N	D	I	S	H

KTC 1400 C

	0	1	2	3	4	5	6	7	8	9
A	LHEO	FVG	QYC	NP	IM	TJK	DB	UR	WA	SX
B	GLST	HKX	PVD	JC	NB	MWY	EF	RA	UO	IQ
C	XSJI	LTK	HCQ	FN	RV	POG	UW	ED	YA	MB
D	TJEM	YKF	SHR	UX	WV	LGA	OD	CQ	IP	BN
E	MDIP	GOW	CHN	QK	RB	VLF	US	YE	TX	JA
F	OQVP	KFW	LBD	GE	CX	TJH	SI	YA	NU	MR
G	SXDN	HTI	WGK	QJ	YR	BCL	AE	VU	MO	FP
H	BPVX	CYD	QOH	GK	JM	TLS	IF	RW	NE	UA
I	QFBD	EUK	CPI	VO	AT	XYN	MS	HW	GJ	LR
J	PJIH	GOE	WVF	ST	QR	YXD	UN	KM	LB	CA
K	MVTE	BNW	UAX	SG	QK	YJR	LD	PH	FI	CO
L	XRWC	KHB	PUN	FQ	JE	ITS	GA	DM	VL	OY
M	CRWB	UGT	NYP	HX	EF	QOL	JM	ID	AV	SK
N	XEDH	PBS	TCY	IG	JO	QRK	NF	VA	ML	WU
O	EARW	BVI	CXK	OU	YL	TSN	FM	QG	JP	DH
P	EONI	MXR	HGC	WK	FA	BSY	LT	QP	DV	UJ
Q	HNLV	RGT	EFP	ID	WB	UXM	AO	SK	QY	CJ
R	NIVP	GJB	XRK	UY	MT	SWD	LQ	EA	FH	OC
S	SJLY	EQT	CGW	IF	XD	UMB	OP	KV	HA	RN
T	QKUD	YTL	CPV	RS	IX	GHE	BA	WJ	MF	ON
U	ASKY	UJR	IMO	WF	BN	DGQ	PX	EL	VC	HT
V	DPOK	IVL	RTU	HY	XM	NWB	AF	SJ	QE	CG
W	VMSI	EJX	POL	GN	HQ	AWD	FB	KT	YC	RU
X	GVYP	EBN	SDF	CW	RM	AXJ	QK	IU	LH	OT
Y	WAFY	PMS	IBV	HJ	LQ	GOC	DU	KE	RN	TX

NAVAIDS

Id	Name	Channel	Position	Elevation
BOO	Bodo	45	N67 15.838 E014 20.046	43
BNK	Banak	47	N70 03.937 E024 58.181	17
OYA	Andoya	28	N69 17.175 E016 08.658	19

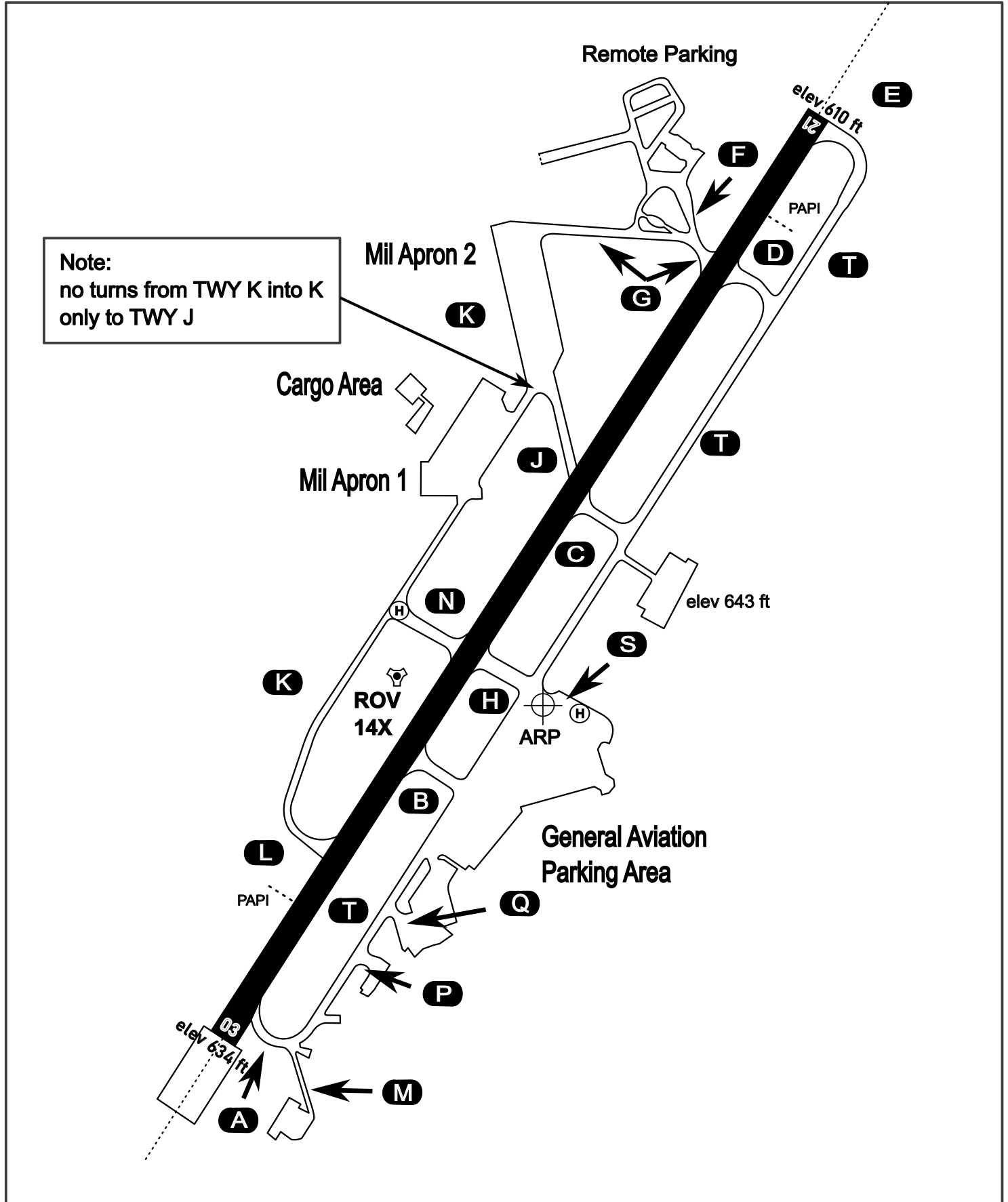
AERODROME CHART

Rovaniemi Aerodrome

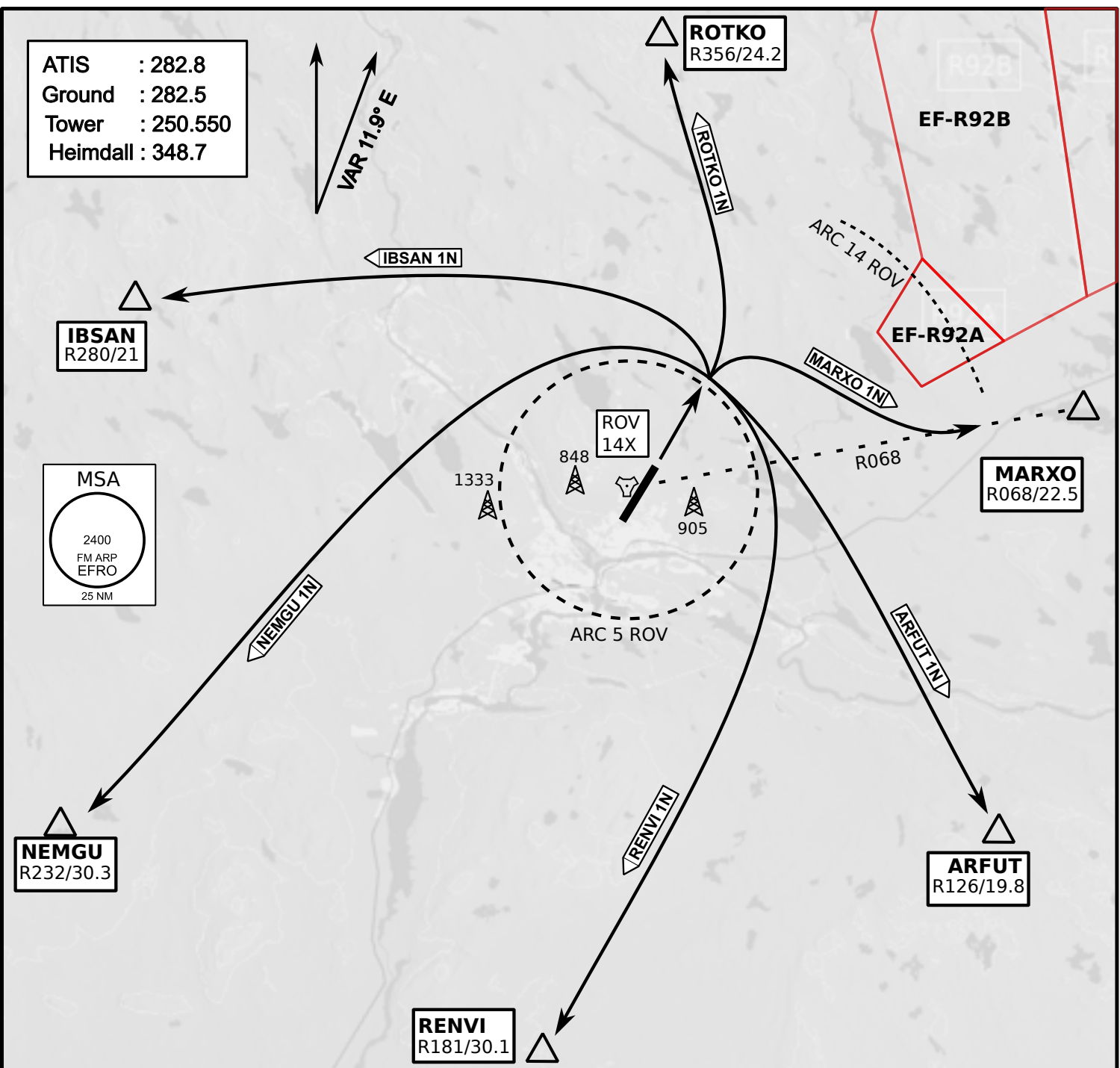
ARP N66° 33' 42" E025° 49' 51"

elev 643 ft

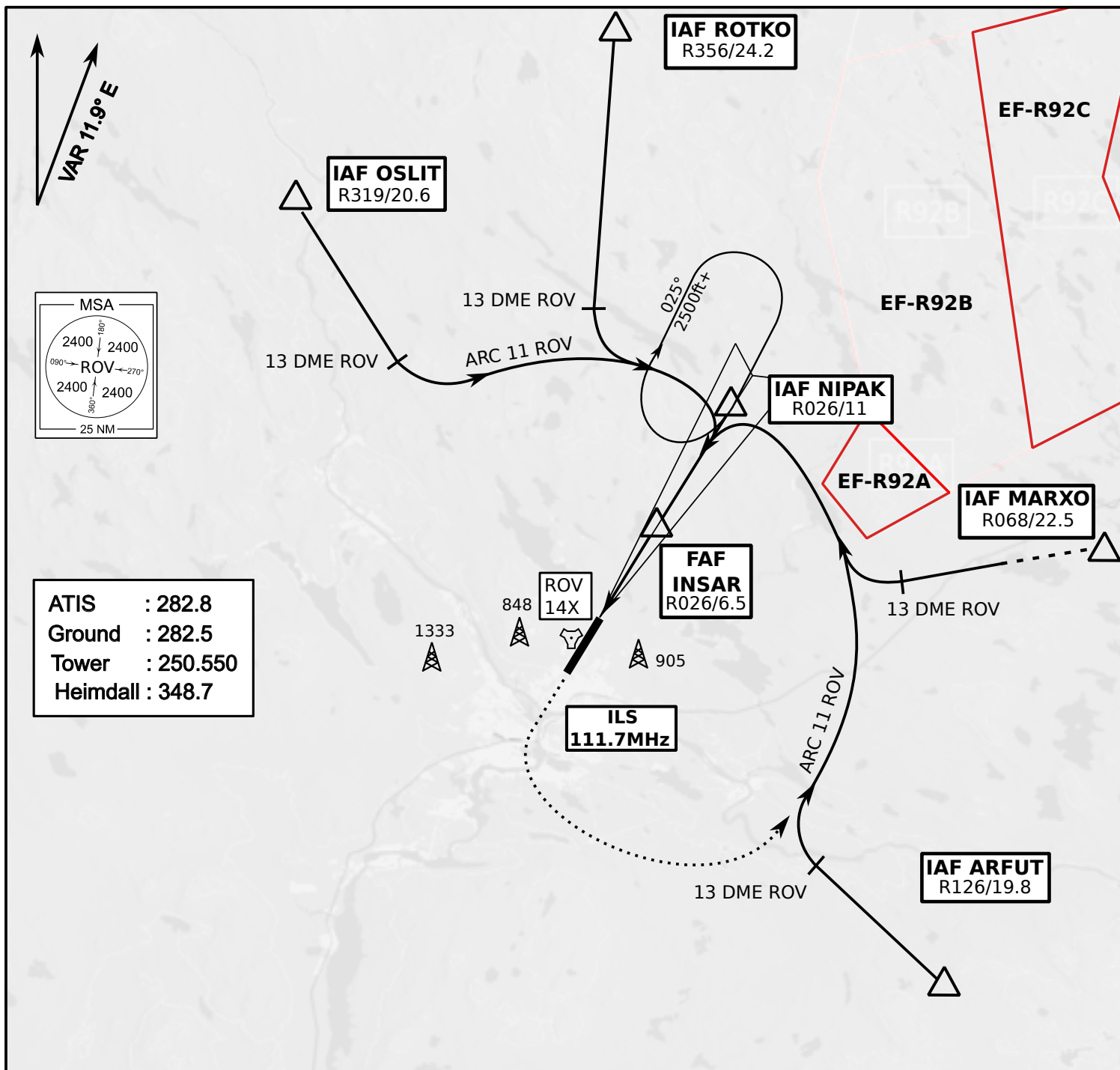
ROVANIEMI, FINLAND



ATIS	Ground	Tower	Radar
282.800	282.500	250.550	348.700

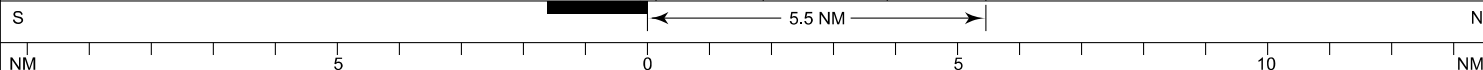
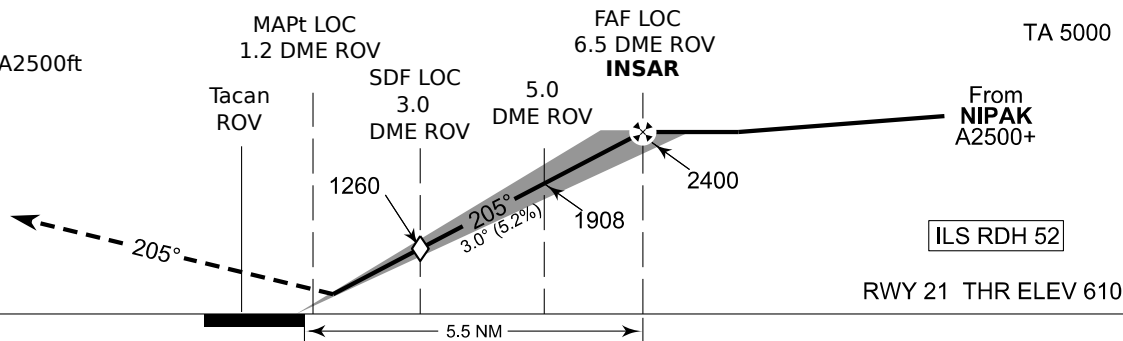


- Climb on Rwy heading to min A2000ft
- when passing A2000ft OR 5 DME ROV (whichever is later) turn to exit point
- Stay outside ARC 5 ROV
- if EF-R92B is active :
intercept R068 ROV inside 14 DME ROV to MARXO
- AB usage only if necessary for flight safety



MISSED APPROACH

Climb on Runway Heading to A2500ft
passing A2000ft turn left
to intercept ARC 11 ROV



OCA (H)	A	B	C	D
ILS CAT I	773 (164)	784 (175)	795 (186)	809 (200)
LOC	930 (320)			
LOC WO SDF	1260 (650)			
Circling	1120 (470)	1150 (510)	1300 (660)	1340 (690)

	kt	90	100	120	140	160
FAF - MAPt 5.4 NM	min:sec	3:36	3:14	2:42	2:19	2:01
Rate of descent	ft/min	480	530	640	740	850

Timing not authorized for defining the MAPt

NOT AVAILABLE

NOT AVAILABLE