

MISSION DATA CARD

OPORD		Callsign		Mission		Date/Time	
4180/2025		Snake 1		Training		272000OCT25	
Task						Freq	
AO	Ivalo					133.5	
Departure				Recovery			
SID RWY 03				ILS RWY 21			
#	Callsign	Pilot		IFF	TCN	LSR	NET
-1	Snake 1-1	Hudson		4411	1Y	1701	
-2	Snake 1-2	Laud		4412	64Y	1702	
-3	Snake 1-3	Remotex		4413	64X	1703	
-4	Snake 1-4	Mütze		4414	1X	1704	

LOADOUT

A/A					GUN	26% HEDP
A/G	8xAGM114L, 8xAGM114K				CHF	30
POD					FLR	60
TKS					FUEL	100%

TOLD

	Takeoff	Target	Joker	Bingo	Land
FUEL	2513				

AIRBASES

	Name	TCN	ATIS	GND	TWR	RWY	Elev	ILS
Dep	Rovaniemi	14X	282.8	282.5	250.55	21	643	111.7
Arr	Rovaniemi	14X	282.8	282.5	250.55	21	643	111.7

FLIGHTPLAN

#	Name	Navaid/Coords/DME	ALT	TOT
1	VIKA	N66 37.474 E026 13.557		
2	R92A.FARP.KI MI	N66 37.800 E026 22.717		
3	South	N66 41.140 E026 52.636		

COMMS

Radio	Usage
1	133.50
2	348.7

OTHER FLIGHTS

Callsign	Mission	Airframe	Freq	TCN	Grpld	Laser
Panther 1	Training	4x F/A-18C	261.35	2/65	3	153X
AO	ENR08	Task	A/G Training			
Tiger 1	Training	4x F/A-18C	261.15	2/65	1	151X
AO	ENR08	Task	A/G Training			
Raptor 1	SEAD	4x F-16C	134.0	1/64		162X
AO	ESR03	Task	DEAD Convoy			
Nazgul 6	Training	4x F-15E	262.45	1/64		156X
AO	ENR02	Task				
Darkstar* 1	ATC	1x AH-64D	264.05	1/64		170X
AO		Task				
Monster 1	Training	4x A-10C	132.15	1/64	21	161X
AO	ESR04	Task	Convoy Hunt			

RADIO CHANNELS

#	Freq	Name
1		Flight/Squadron specific
2	282.8	Rovaniemi ATIS
3	282.5	Rovaniemi Ground
4	250.55	Rovaniemi Tower
5	320.7	Bodo ATIS
6	250.75	Bodo Tower
7	235.45	Kallax ATIS
8	250.3	Kallax Tower
9	265.0	Texaco-1 KC-135 Medium / Slow 71Y
10	319.8	Arco-1 KC-135 High / Fast 22Y
11	360.8	Shell-1 KC-135 MPRS High / Fast 41Y
12	304.0	CVN-71 Rough Rider (RRR) 71X
13	303.0	LHA-1 Tarawa (TWA) 79X
14	247.8	S-3B Mauler-1 (MAU) 64Y
15	347.8	Loki (E-2D)
16	348.7	Heimdall (E-3A)
17	242.17	ESR02 - CAS Range Operator
18	34.7	ESR02 - JTAC Odin
19	270.5	Blue
20	270.75	Red

RAMROD

0	1	2	3	4	5	6	7	8	9
P	O	S	T	M	A	R	K	E	D

KTC 1400 C

	0	1	2	3	4	5	6	7	8	9
A	BKOE	URN	DFT	SM	HL	PGW	IV	XY	JA	CQ
B	AOUX	YJH	SGW	VB	PT	RFC	KL	IE	QD	NM
C	KGTM	OLC	FEJ	XS	BD	AUN	WP	VQ	IR	YH
D	GOIN	UJT	VYR	QC	FL	DBW	MP	AH	XE	SK
E	STGE	VAY	WHN	IQ	MX	JFU	KD	OB	PR	LC
F	WFEB	QOJ	CGA	DN	XK	PYL	TU	RS	IV	MH
G	NAKB	SPL	YTG	WF	EJ	HMX	IU	OV	RQ	CD
H	RHQF	JXG	KUC	EA	NY	VBL	OW	TP	MI	DS
I	TAMO	SKH	GQN	FU	XJ	DLP	YC	BI	RV	WE
J	OGVH	NUF	KTB	WI	PM	YDL	SE	XR	CJ	AQ
K	AJUX	MRD	YOC	PB	HV	NTW	SF	EL	IG	KQ
L	BIPJ	WYT	OFD	KL	HR	NUG	EV	QX	MC	AS
M	ADXF	BLW	GNM	QV	YR	OTJ	ES	KP	IU	CH
N	CUSV	XOP	ALW	YR	QT	IEG	HF	BM	NK	DJ
O	IOQR	YHP	UFB	MG	JV	NDE	WS	TC	LK	AX
P	RPCD	OBU	FLM	ST	EV	YHI	KX	JW	QG	NA
Q	COIA	KSP	XJT	HW	BE	NVM	LY	GU	DQ	RF
R	JUKD	XBG	TOP	EL	MA	VHW	IQ	NS	RC	FY
S	VLWM	CHT	KOB	FQ	RA	ISG	JD	PX	EY	UN
T	SFLN	DYM	VRQ	EX	JP	GWI	HA	OB	UK	TC
U	WSXL	KBY	DFC	EV	GR	HJQ	NU	AT	MP	IO
V	GARM	VFL	UBE	NO	WQ	JCS	YH	PD	KI	TX
W	NFOP	KCM	WHX	EA	RI	LUB	JY	TG	SQ	VD
X	ANCY	BDL	SRX	UM	TG	OVH	KI	WF	EJ	QP
Y	APIR	DUF	SKJ	GL	OB	MCW	NX	VE	TH	QY

NAVAIDS

Id	Name	Channel	Position	Elevation
BOO	Bodo	45	N67 15.838 E014 20.046	43
BNK	Banak	47	N70 03.937 E024 58.181	17
OYA	Andoya	28	N69 17.175 E016 08.658	19

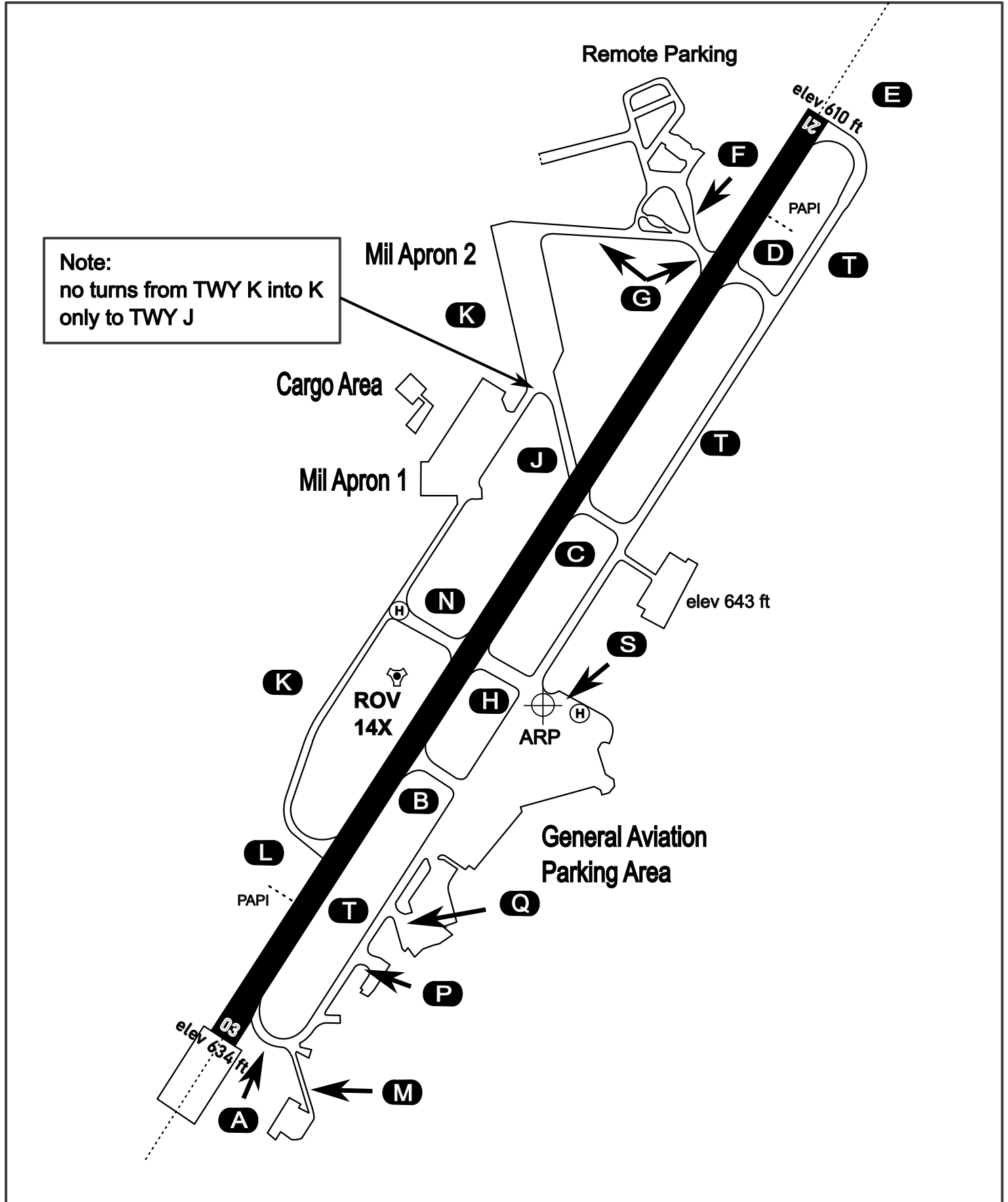
AERODROME CHART

Rovaniemi Aerodrome

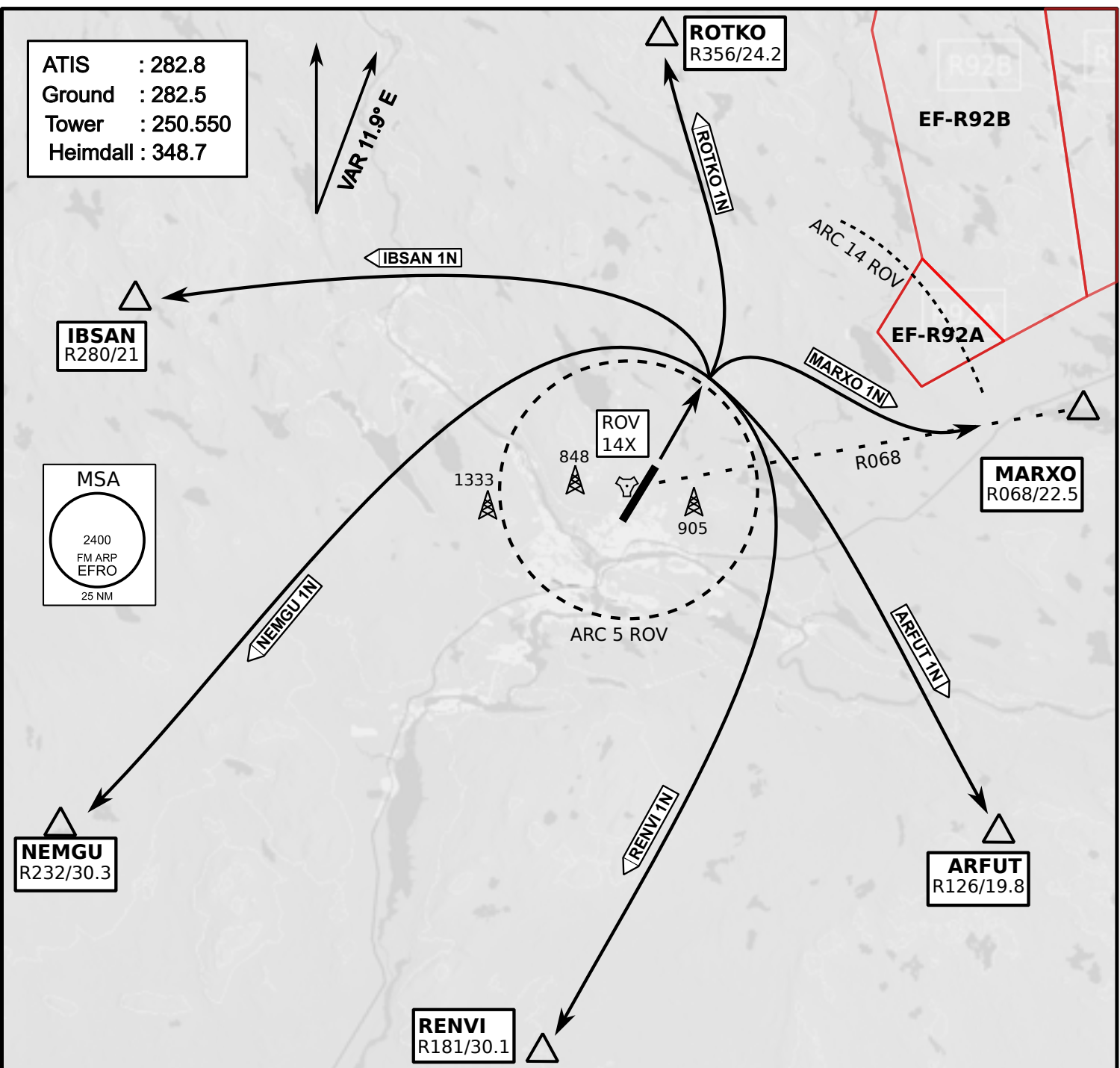
ARP N66° 33' 42" E025° 49' 51"

elev 643 ft

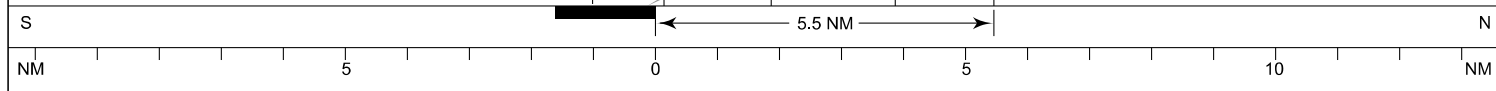
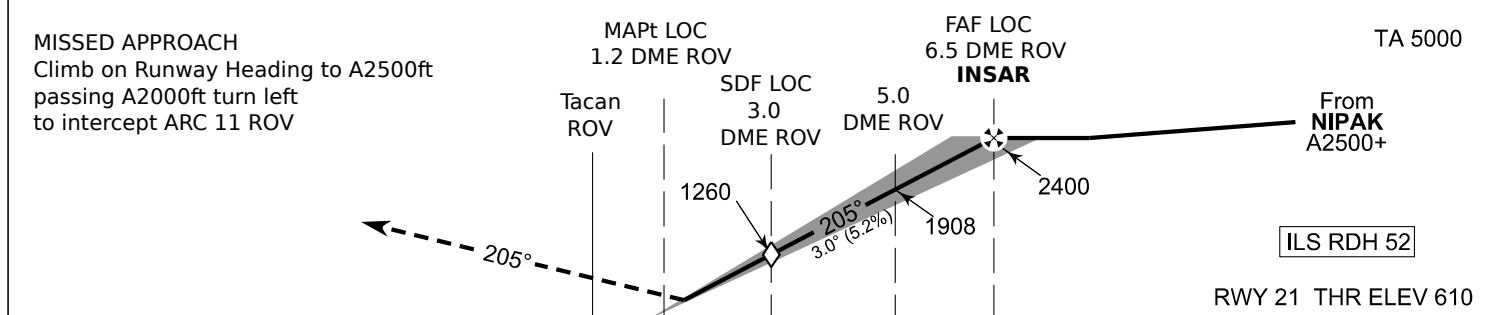
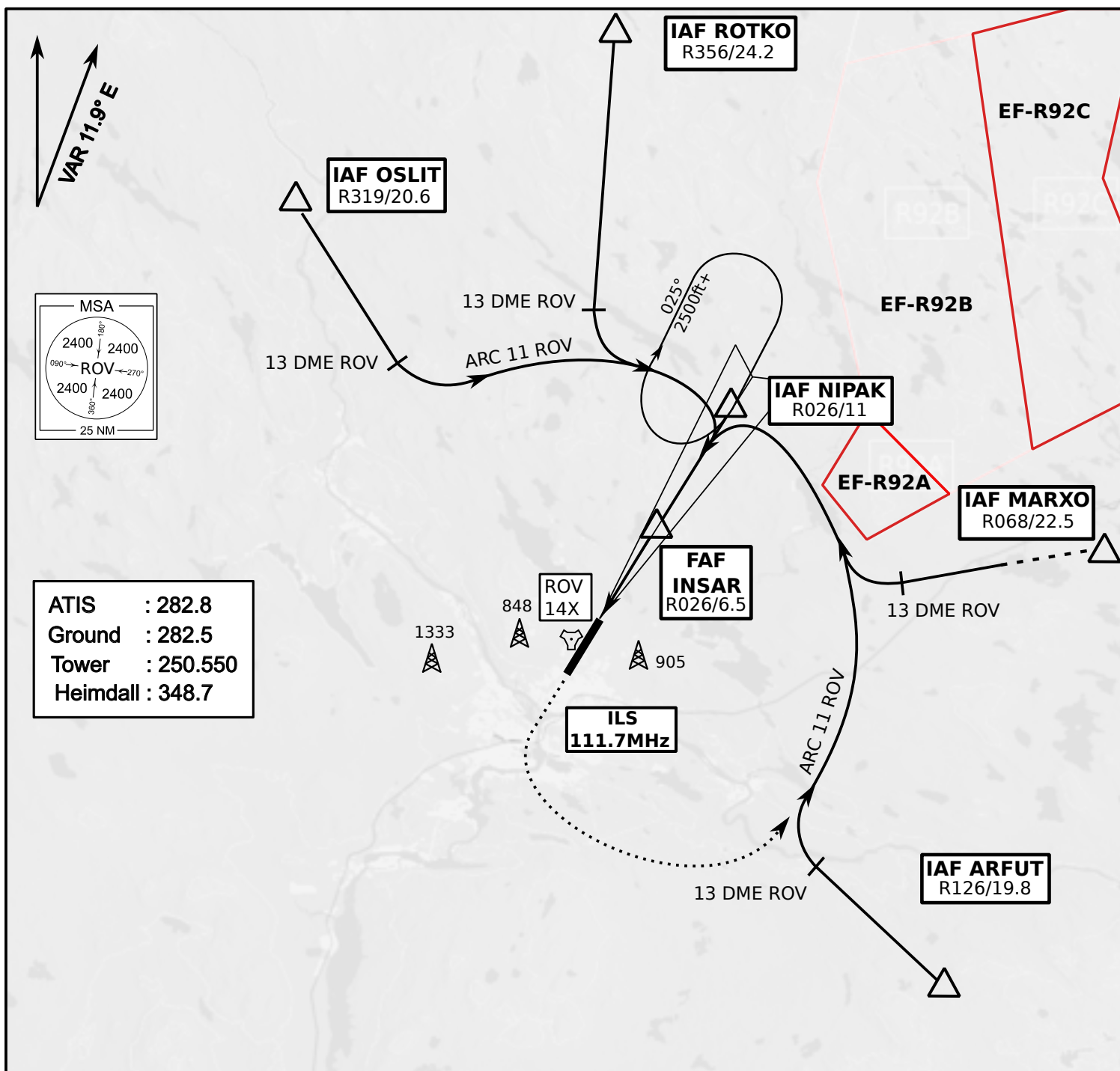
ROVANIEMI, FINLAND



ATIS	Ground	Tower	Radar
282.800	282.500	250.550	348.700



- Climb on Rwy heading to min A2000ft
- when passing A2000ft OR 5 DME ROV (whichever is later) turn to exit point
- Stay outside ARC 5 ROV
- if EF-R92B is active :
intercept R068 ROV inside 14 DME ROV to MARXO
- AB usage only if necessary for flight safety



OCA (H)	A	B	C	D
ILS CAT I	773 (164)	784 (175)	795 (186)	809 (200)
LOC	930 (320)			
LOC WO SDF	1260 (650)			
Circling	1120 (470)	1150 (510)	1300 (660)	1340 (690)

	kt	90	100	120	140	160
FAF - MAPt 5.4 NM	min:sec	3:36	3:14	2:42	2:19	2:01
Rate of descent	ft/min	480	530	640	740	850

Timing not authorized for defining the MAPt