

**MISSION DATA CARD**

OPORD		Callsign		Mission		Date/Time	
4165/2025		Nazgul 6		Training		202000OCT25	
Task						Freq	
AO						262.45	
Departure				Recovery			
VFR				VFR			
#	Callsign	Pilot		IFF	TCN	LSR	NET
-1	Nazgul 6-1	Striver/UTA		1161	1Y	1561	

**LOADOUT**

A/A						GUN	
A/G						CHF	
POD						FLR	
TKS						FUEL	

**TOLD**

	Takeoff	Target	Joker	Bingo	Land
FUEL	22588				

**AIRBASES**

	Name	TCN	ATIS	GND	TWR	RWY	Elev	ILS
Dep	Incirlik AFB	21X	377.47 5	371.35	360.1	5	190	
Arr	Incirlik AFB	21X	377.47 5	371.35	360.1	5	190	
Div	Akrotiri AFB	107X	288.2	240.1	339.85	28	62	109.7

**COMMS**

Radio

Usage

1

inhouse

2

305.000 AM

## NOTES

Main Comms 305.000AM

TANKER130	ARCO 1-1	247.0 TCN:37X
TANKER135	TEXACO 1-1	247.1 TCN:38X near LTAC
A22 GS430		
TANKER135MPRS	SHELL 1-1	247.2 TCN:39X
TANKERIL78	TEXACO 1-1	247.3
RECOVERY TANKER NAVY ONE	1-1	247.4 TCN:101Y
AWACS	OVERLORD 1-1	249.1 E-3A near Aleppo A35
GS420		
AWACS	MAGIC 1-1	249.2
(AFTER BASSEL AL ASSAD IS CAPTURED)		
CVN71	TACAN: 101X 142.1	ICLS:11 ACLS:337.0
CVN74	TACAN: 100X 142.0	ICLS:10 ACLS:336.0
CV59	TACAN: 102X 142.2	ICLS:12
LHA1	TACAN: 103X 142.3	ICLS:13
ADM NEW	142.5	
ADM OLD	142.4	
HMS INV	TACAN: 104X 142.6	
ARLEIGH BURKE 1	142.7	

**RADIO CHANNELS**

#	Freq	Name
1		Flight/Squadron specific
2	288.2	Akrotiri ATIS
3	240.1	Akrotiri Ground
4	339.85	Aktrotiri Tower
5	335.05	Akrotiri Approach
6	360.1	Incirlik Tower
7	371.35	Incirlik Ground
8	377.475	Incirlik ATIS
9		No Preset
10	127.3	Paphos ATIS
11	353.8	Paphos Tower
12	304.0	CVN-73 George Washington
13	302.0	LHA-1 Tarawa
14	259.0	CV-59 Forrestal
15		No Preset
16	377.8	Overlord
17	265.0	KC-135 Texaco-1 medium/slow
18	319.8	KC-135 Arco-1
19	360.8	KC-135MPRS Arco-2
20	256.0	S-3B Recovery Tanker

**RAMROD**

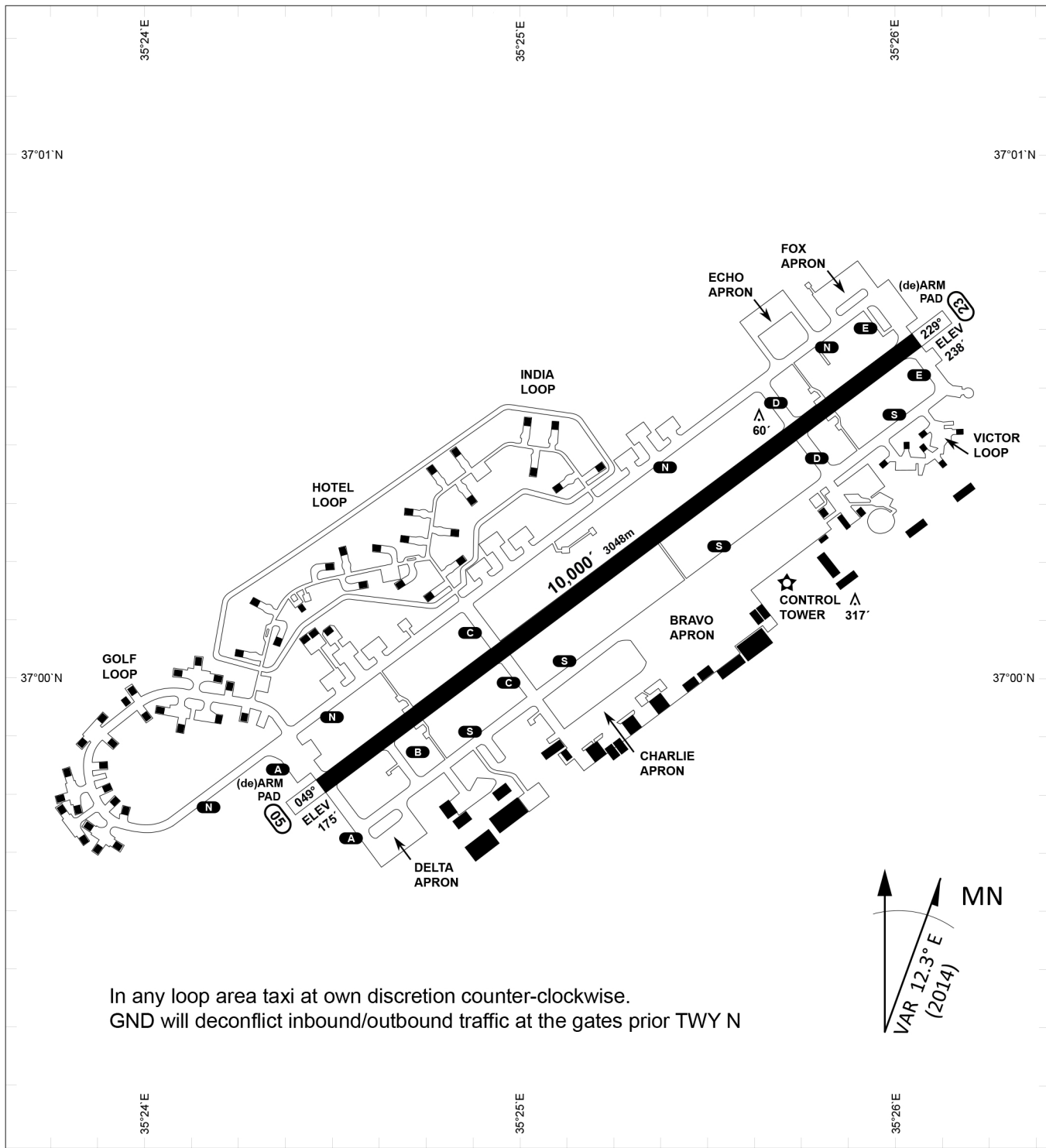
0	1	2	3	4	5	6	7	8	9
U	L	T	R	A	S	O	N	I	C

**KTC 1400 C**

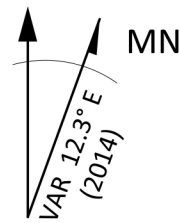
	0	1	2	3	4	5	6	7	8	9
A	FRUM	GLV	PHB	XI	SN	JTQ	OW	CA	KE	DY
B	WFQX	PEO	NYA	SJ	CV	GTR	LH	ID	KB	MU
C	THBN	EDI	UQL	JR	XF	OWS	YC	VK	PA	MG
D	FSOV	IBU	WNE	MH	TK	LJC	AR	GQ	DY	PX
E	NEIP	OMV	URF	YX	DC	HKL	BW	QG	TJ	SA
F	WEGL	JFN	VDK	XA	YT	HUM	IS	RC	PO	BQ
G	MHAC	DGL	KWY	EX	FO	NVQ	JU	TP	SB	IR
H	BSUE	WNK	XCY	PA	GL	MJI	FD	RH	OQ	VT
I	THWP	FRQ	CSN	OJ	XD	YAG	VB	ML	IE	UK
J	IYKF	GON	VCP	SX	RH	EDA	MT	WL	JU	QB
K	PUHO	BDY	MLQ	NE	FX	ATV	JC	IG	SR	KW
L	OBLP	KXU	JGV	RQ	DT	WEY	FS	HN	MI	AC
M	DKRT	XWC	LUJ	FP	EV	HMQ	IB	NA	YG	SO
N	VLYM	CGS	QTD	ON	UJ	PXF	RW	KH	IA	EB
O	JNAU	TWC	IYQ	KX	OV	PBF	RL	EH	SD	MG
P	MSGD	AYQ	VER	XU	OH	CTK	NP	WF	JI	BL
Q	KDOT	MNX	JQU	GR	AL	EYW	SI	VC	FB	PH
R	VLOB	RMP	YCW	NI	ED	UFA	XJ	GQ	HS	KT
S	XVFR	EKG	PMN	BD	OS	AUQ	YI	WL	TH	CJ
T	YFGP	SCR	NTV	QL	WA	DOE	BK	IH	UM	JX
U	FPAD	LSV	NWK	BM	HO	TIG	CU	QR	XE	JY
V	TKRH	PFD	XUQ	NA	WV	CME	IL	GO	BY	JS
W	OPQM	JRS	VNI	CW	GX	LUE	KF	YT	HD	AB
X	VDGF	ABQ	HIO	SK	RL	TEU	JY	XC	MP	WN
Y	HMYA	VXW	GUP	EQ	JO	KRT	IL	BS	ND	CF

**NAVAIDS**

<b>Id</b>	<b>Name</b>	<b>Channel</b>	<b>Position</b>	<b>Elevation</b>
DAN	Incirlik	21	N37 00.950 E035 26.883	243
AKR	Akrotiri	107	N34 34.765 E032 57.769	147
PHA	Paphos	79	N34 42.997 E032 28.963	35
RMD	Ramat David	84	N32 39.892 E035 11.265	136
OS66	Kuweires Military Aviation Institute	36	N36 11.362 E037 34.226	1200



In any loop area taxi at own discretion counter-clockwise.  
 GND will deconflict inbound/outbound traffic at the gates prior TWY N



PAR	RWY	CAT	MINIMA	ARP	ELEV	Scale 1:35'500 0 300 600 900 1200 1500 [m] 0 1000 2000 3000 4000 5000 [ft]
SRA	21L 3R 21R 3L	A B D E A B D E A C D E A C D E	2057 - 0.8 200 (200-0.8/1.6) GS 3° 2057 - 0.8 200 (200-0.8/1.6) GS 3° 2257 - 1.2 350 (350-1.2/1.6) 2257 - 1.2 350 (350-1.2/1.6)	37°0'56.000" N 35°26'53.000" E	1857 [ft] 566 [m]	

RWY	TORA	TORA from D	TORA from B	COURSE	PSN THR	ALS
23	10,000 [ft] 3048 [m]	8,000 [ft] 2438 [m]		235°	37°00.611'N 035°26.368'E	⊙
05	10,000 [ft] 3048 [m]		9,000 [ft] 2743 [m]	055°	36°59.043'N 035°24.760'E	⊙

ATIS	INCIRLIK GROUND	INCIRLIK TOWER	CONTROL	TACAN	ILS RWY 05	ILS RWY 23
377.475	371.350   123.020	360.100   121.100	337.800	DAN21x	109.3MHz	111.7MHz

ATIS  
377.475 (#8)

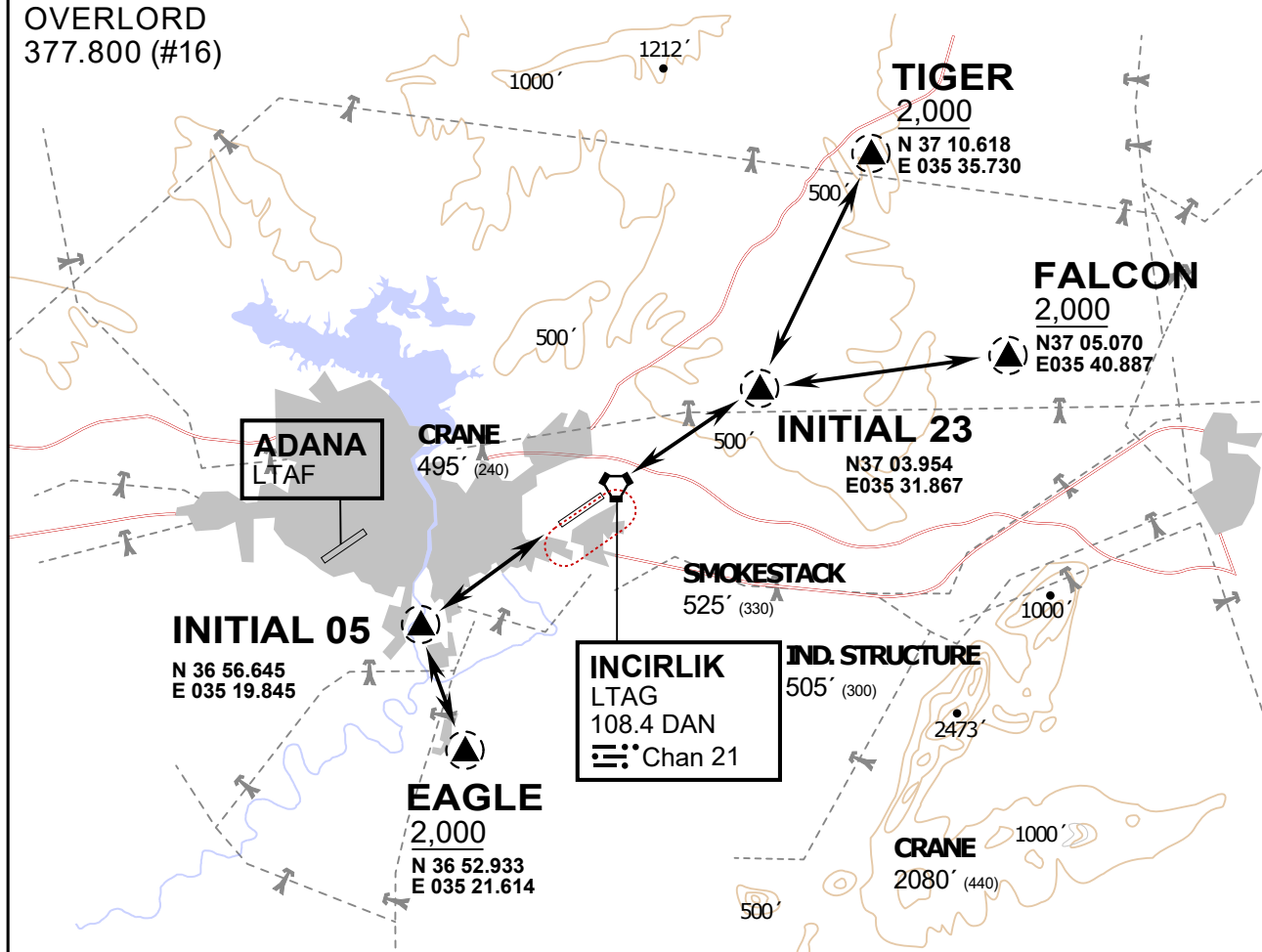
INCIRLIK GROUND  
371.3500 (#7)

INCIRLIK TOWER  
360.100 (#6)

OVERLORD  
377.800 (#16)

NOT FOR CIVIL USE

CAUTION: If unable to comply  
with restrictions advise ATC  
prior to departure.



vJaBoG32 ETTR NAV CHART



### ARR / DEP ROUTE DESCRIPTION

#### STRAIGHT-IN RWY 05 / 23

Pass entry EAGLE / TIGER / FALCON at 2000' and INITIAL at 1500'

#### OVERHEAD BREAK RWY 05 / 23

Pass entry EAGLE / TIGER / FALCON at 2500',  
pass INITIAL at 2000' break to the south at 2000' pattern altitude.

#### HELICOPTER ROUTES

Pass entry EAGLE / TIGER / FALCON at 1000' or below, pass INITIAL at 1000' break to the south at 1000' pattern altitude.

#### DEPARTURE ALL DIRECTIONS

pass DER below 1500ft



ATIS  
377.475 (#8)

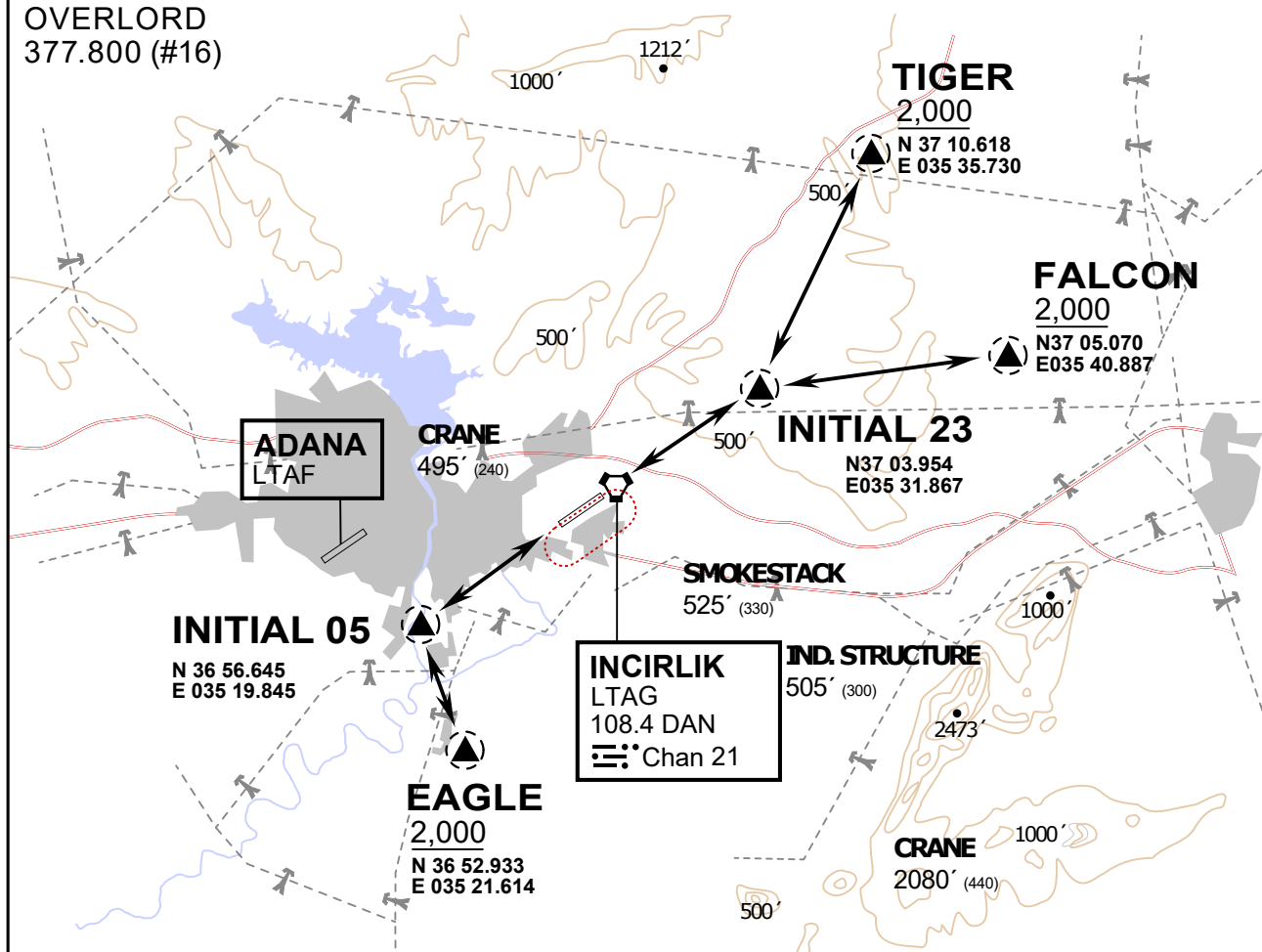
INCIRLIK GROUND  
371.3500 (#7)

INCIRLIK TOWER  
360.100 (#6)

OVERLORD  
377.800 (#16)

NOT FOR CIVIL USE

CAUTION: If unable to comply  
with restrictions advise ATC  
prior to departure.



vJaBoG32 ETTR NAV CHART



### ARR / DEP ROUTE DESCRIPTION

#### STRAIGHT-IN RWY 05 / 23

Pass entry EAGLE / TIGER / FALCON at 2000' and INITIAL at 1500'

#### OVERHEAD BREAK RWY 05 / 23

Pass entry EAGLE / TIGER / FALCON at 2500',  
pass INITIAL at 2000' break to the south at 2000' pattern altitude.

#### HELICOPTER ROUTES

Pass entry EAGLE / TIGER / FALCON at 1000' or below, pass INITIAL at 1000' break to the south at 1000' pattern altitude.

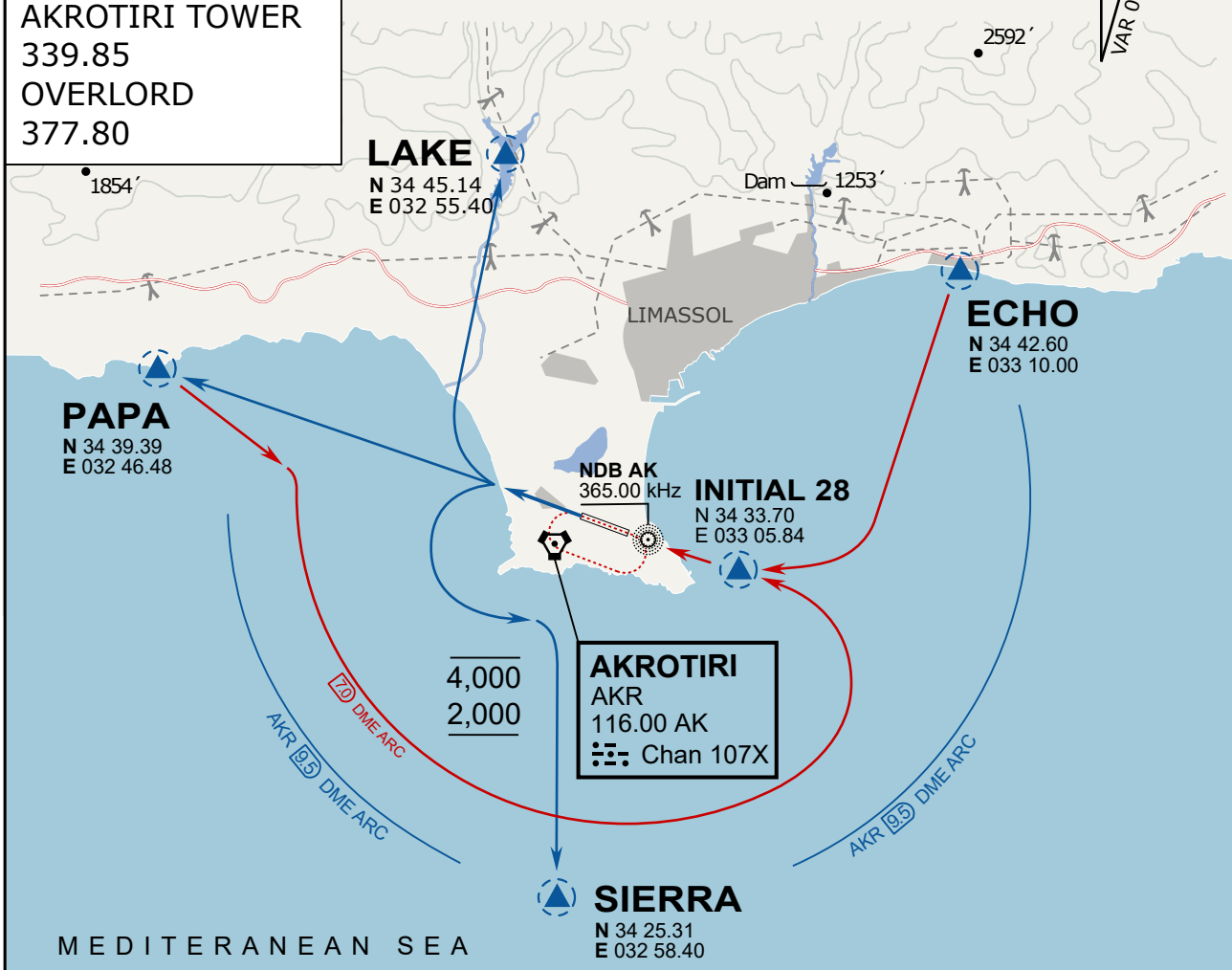
#### DEPARTURE ALL DIRECTIONS

pass DER below 1500ft

ATIS  
 288.20  
 AKROTIRI GROUND  
 240.10  
 AKROTIRI TOWER  
 339.85  
 OVERLORD  
 377.80

NOT FOR CIVIL USE

CAUTION: If unable to comply with restrictions advise ATC prior to departure.



ARR / DEP ROUTE DESCRIPTION

STRAIGHT-IN RWY28

Pass ENTRY at 5.000' MSL or below, pass INITIAL at 1.500' MSL or below.

OVERHEAD BREAK RWY28

Pass ENTRY at 5.000' MSL or below, pass INITIAL at 2.000' MSL, break to the south.

DEPARTURE GENERAL

Pass Departure end of runway at 1.000' or below.

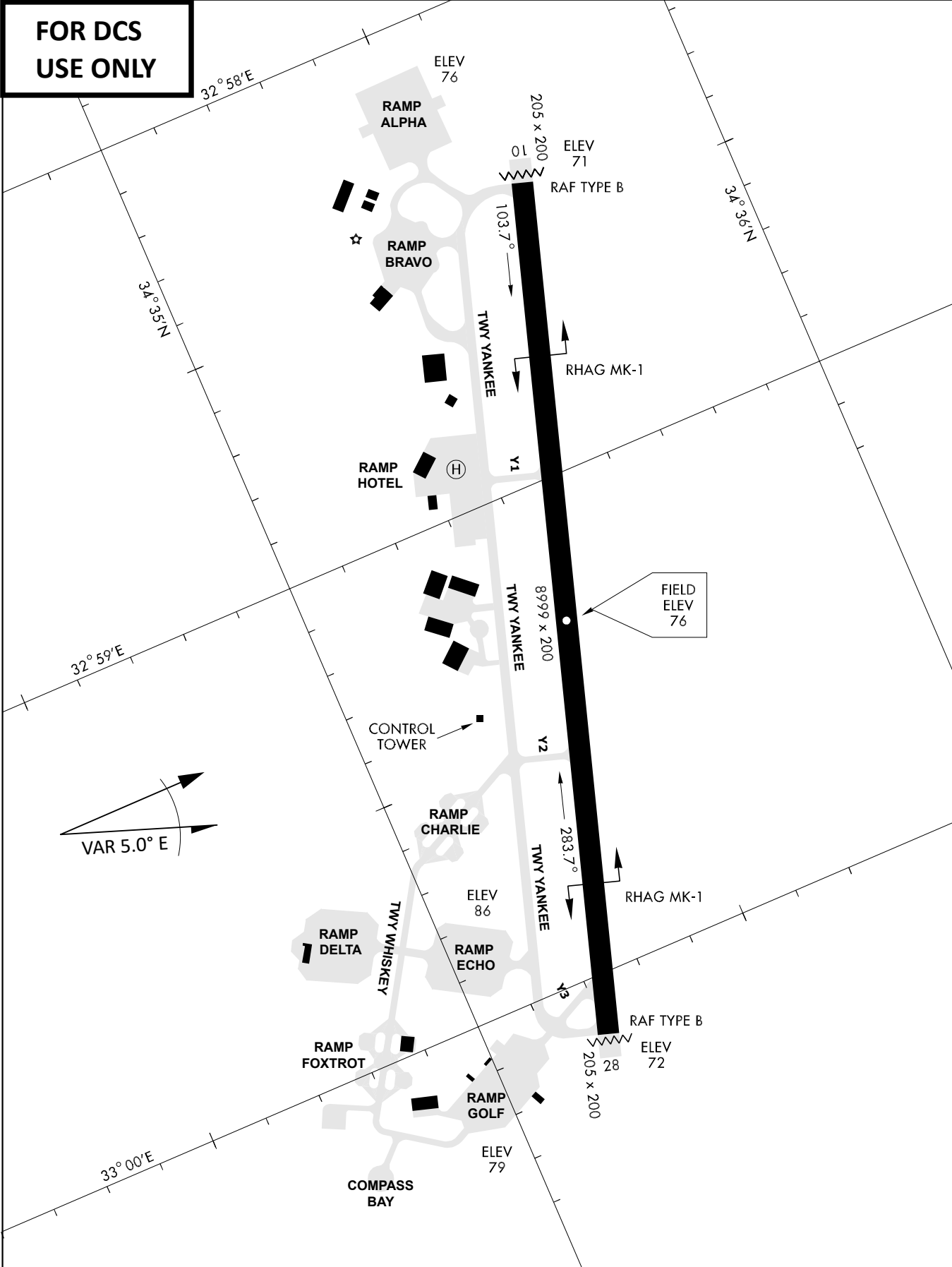
DEP RWY28 PAPA: Fly straight ahead to exit.

DEP RWY28 LAKE: Fly straight ahead until coast, than right turn direct exit.

DEP RWY28 SIERRA: Fly straight ahead until coastline, then climbing left turn, intercept AKR R-180 to exit.

DEP ECHO: no exit.

**FOR DCS  
 USE ONLY**



ATIS	AKROTIRI GND	AKROTIRI TWR	OVERLORD CONTROL	TACAN	FIELD ELEVATION
288.20 MHz	240.10   122.10	339.85   130.075	377.8	AKR 107X	<b>75 [ft] 23 [m]</b>