

**MISSION DATA CARD**

OPORD		Callsign		Mission		Date/Time		
4164/2025		Tiger 7		Training		191400OCT25		
Task	CASE I Training					Freq		
AO						261.15		
Departure				Recovery				
CAT				CASE I				
#	Callsign		Pilot		IFF	TCN	LSR	NET
-1	Tiger 7-1		Laud		1071	1Y	1551	

**LOADOUT**

A/A						GUN	
A/G						CHF	
POD						FLR	
TKS						FUEL	

**TOLD**

	Takeoff	Target	Joker	Bingo	Land
FUEL	10803				

**AIRBASES**

	Name	TCN	ATIS	GND	TWR	RWY	Elev	ILS
Dep	CVN-71 USS Theodore Roosevelt	71X		ICLS 7	304.0			
Arr	CVN-71 USS Theodore Roosevelt	71X		ICLS 7	304.0			
Div	Banak	47X			250.5	34	26	109.1

**SUPPORT****Tanker**

Callsign	TCN	Freq	ALT	TAS
TEXACO 1	71Y	265.0		
	Pos			
ARCO 1	22Y	319.8		
	Pos			
SHELL 1	41Y	360.8		
	Pos			

**AWACS**

Callsign	Freq	ALT	Pos
HEIMDALL	348.7		
LOKI	347.8		

## RADIO CHANNELS

#	Freq	Name
1		Flight/Squadron specific
2	282.8	Rovaniemi ATIS
3	282.5	Rovaniemi Ground
4	250.55	Rovaniemi Tower
5	320.7	Bodo ATIS
6	250.75	Bodo Tower
7	235.45	Kallax ATIS
8	250.3	Kallax Tower
9	265.0	Texaco-1   KC-135   Medium / Slow   71Y
10	319.8	Arco-1   KC-135   High / Fast   22Y
11	360.8	Shell-1   KC-135 MPRS   High / Fast   41Y
12	304.0	CVN-71 Rough Rider (RRR)   71X
13	303.0	LHA-1 Tarawa (TWA)   79X
14	247.8	S-3B Mauler-1 (MAU)  64Y
15	347.8	Loki (E-2D)
16	348.7	Heimdall (E-3A)
17	242.17	ESR02 - CAS Range Operator
18	34.7	ESR02 - JTAC Odin
19	270.5	Blue
20	270.75	Red

**RAMROD**

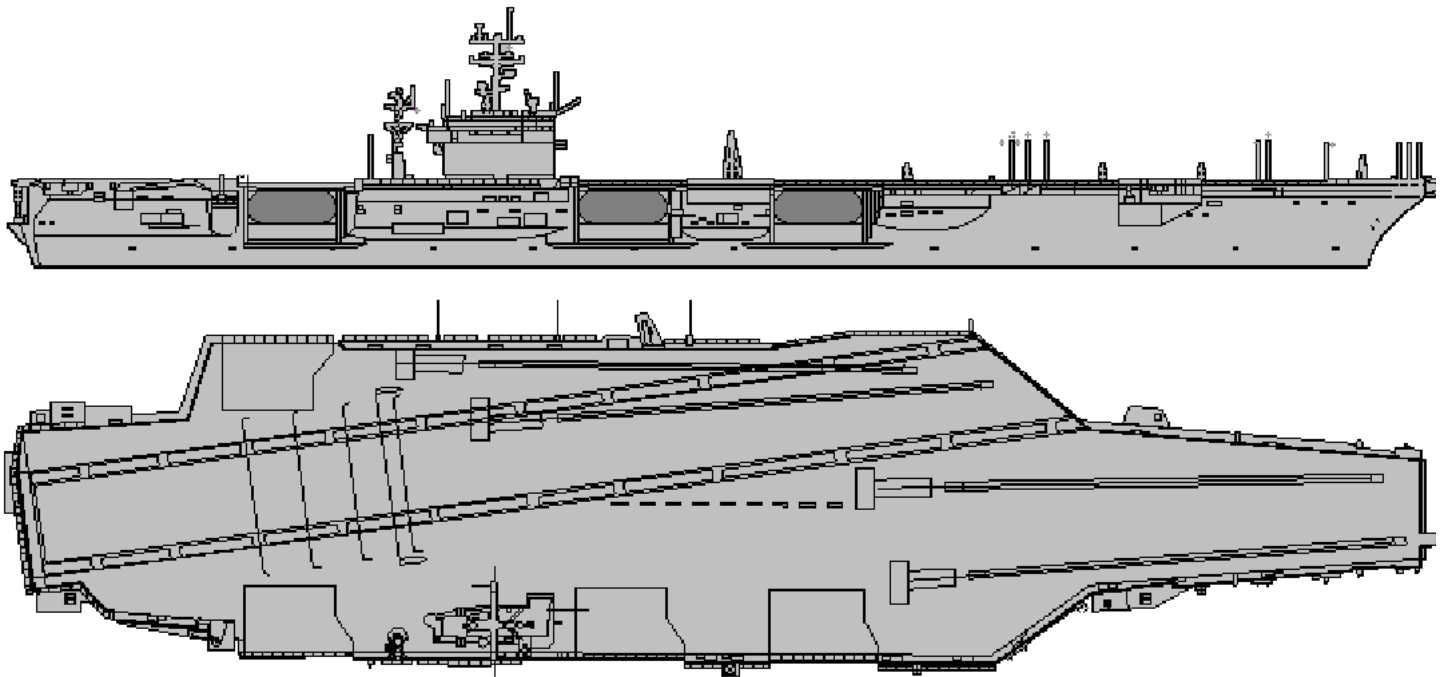
0	1	2	3	4	5	6	7	8	9
L	A	C	Q	U	E	R	I	N	G

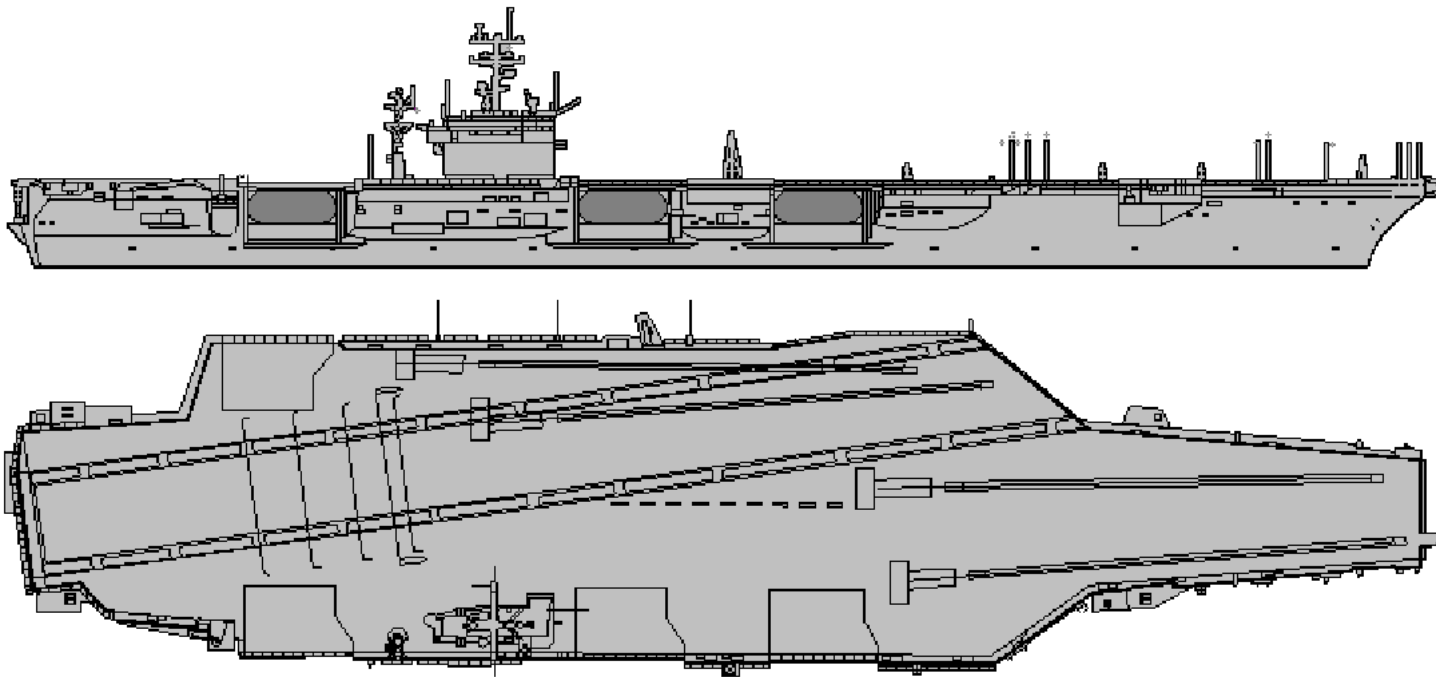
**KTC 1400 C**

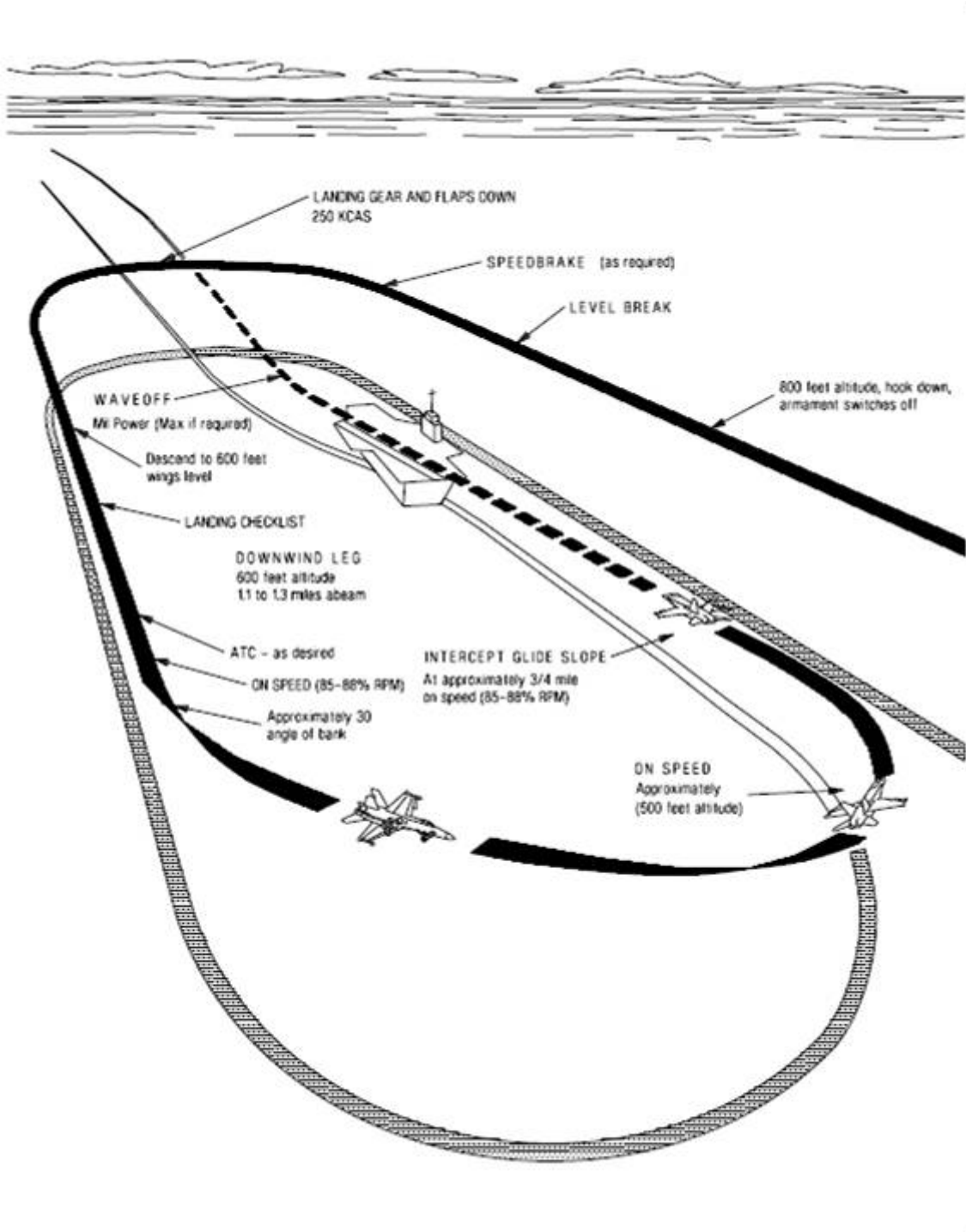
	0	1	2	3	4	5	6	7	8	9
A	PADL	JBO	SGT	FV	KM	YER	UQ	XN	CH	WI
B	TEIH	BKL	ARN	DF	MY	SWV	UO	GJ	QP	CX
C	AGEX	MLQ	YKW	PB	ND	SJV	TU	RO	CI	FH
D	NUSL	TKV	GYQ	PR	OI	DAE	HF	WJ	MC	BX
E	XLMK	PIV	QDO	GB	ST	AFJ	YE	WC	HU	RN
F	KPYQ	XVG	BHW	ID	AN	LSE	TC	OJ	UR	MF
G	UKIM	QSC	WVX	AR	YD	NBH	TP	LF	OE	GJ
H	THFE	SOD	VBK	RY	UL	PNM	IC	XJ	AW	QG
I	XYDW	VLA	KFE	GC	PU	NMT	OH	JI	QS	RB
J	DMGK	QNI	JOS	HP	VF	RCU	YA	BW	LX	ET
K	WQIA	GVU	LJY	CE	BX	KTF	HS	OP	NR	DM
L	OPRC	BST	DEK	NV	UA	MYW	XQ	IF	HG	JL
M	WGTI	UYX	LPC	QJ	NK	BDE	SV	FR	HO	MA
N	YMUB	FKT	QOX	WE	GC	VAL	HP	DI	NS	RJ
O	BTSH	IPC	EUR	WM	LY	JXK	VO	FD	NG	AQ
P	HUOE	ING	VTR	JS	YX	QLD	PF	CK	AW	MB
Q	RPJE	SAM	DBH	GO	CL	FVN	KU	IX	QT	WY
R	OHXA	BCI	QFU	PJ	RD	LVE	SW	YT	NG	KM
S	FIWN	ECG	KRA	YJ	HX	LSD	MU	TO	BQ	VP
T	WRUN	HCP	VMB	KX	LT	JSI	YD	GA	QF	OE
U	UHBW	EXN	ODT	IY	SL	AJK	RM	CF	VP	QG
V	WRJU	EFV	KTX	CH	MG	LQN	PI	AY	SD	BO
W	NHBR	CSW	PXA	JG	ET	QKL	UI	FY	MD	OV
X	CSOA	LNR	PBQ	GJ	HM	TUI	WF	YD	EX	KV
Y	XJKS	MGR	AOF	BP	TC	VIE	ND	UW	LY	QH

**NAVAIDS**

Id	Name	Channel	Position	Elevation
BOO	Bodo	45	N67 15.838 E014 20.046	43
BNK	Banak	47	N70 03.937 E024 58.181	17
OYA	Andoya	28	N69 17.175 E016 08.658	19









# MIPS INSTRUMENT APPROACH CHART

AD ELEV 26

HPMA ILS or LOC RWY 34  
BANAK (ENNA)

ATIS  
N/A

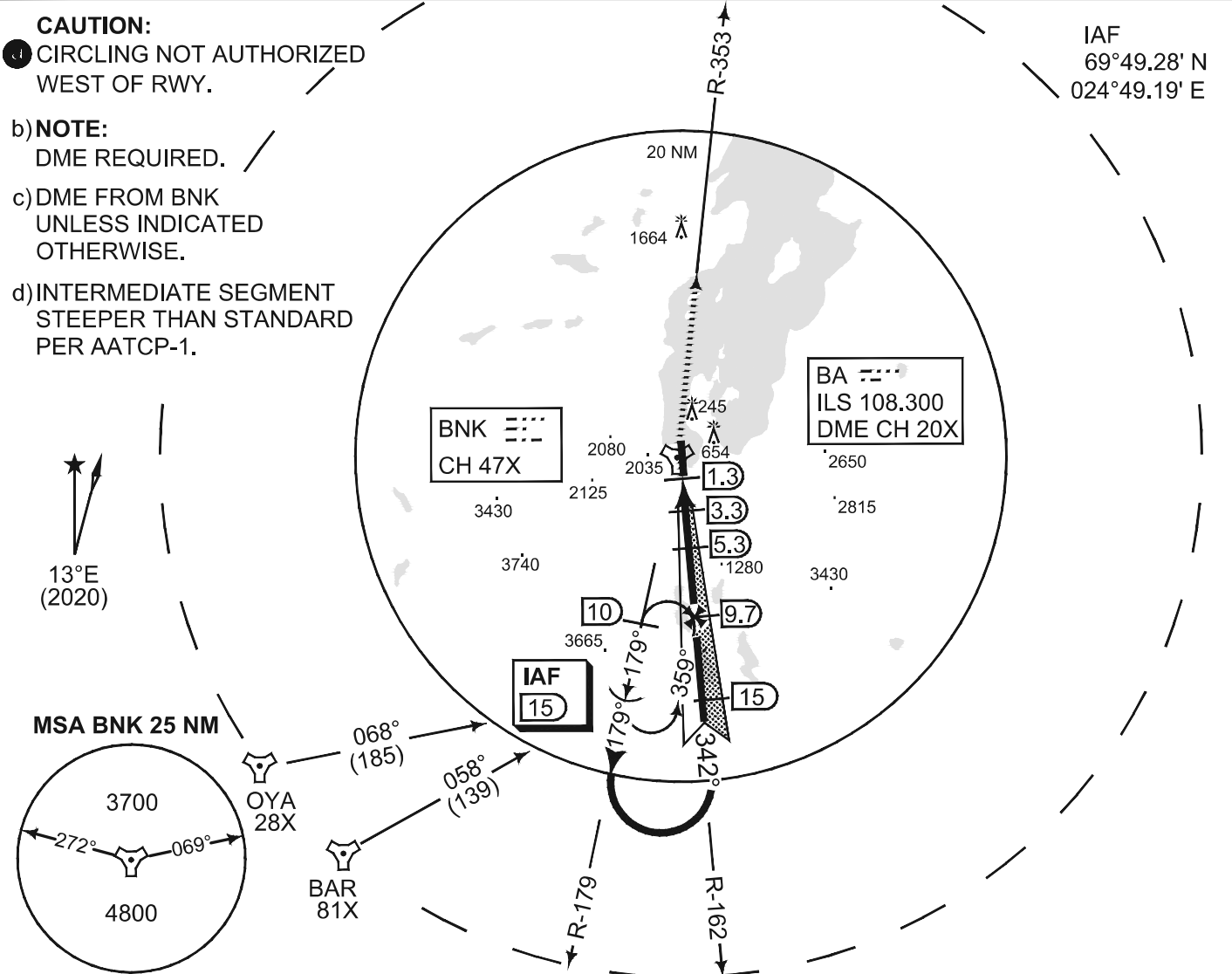
BANAK TWR / APPR  
250.50 / 348.7

LOCALIZER/DME BA 108.300 / CH 20X	APP COURSE 342°	GS INTCP ALT 3500	GS 3.5°	DA 251	THR ELEV 25	ALS 737 m	LDA 8543
--------------------------------------	--------------------	----------------------	------------	-----------	----------------	--------------	-------------

**CAUTION:**  
CIRCLING NOT AUTHORIZED WEST OF RWY.

- b) **NOTE:**  
DME REQUIRED.
- c) DME FROM BNK UNLESS INDICATED OTHERWISE.
- d) INTERMEDIATE SEGMENT STEEPER THAN STANDARD PER AATCP-1.

IAF  
69°49.28' N  
024°49.19' E

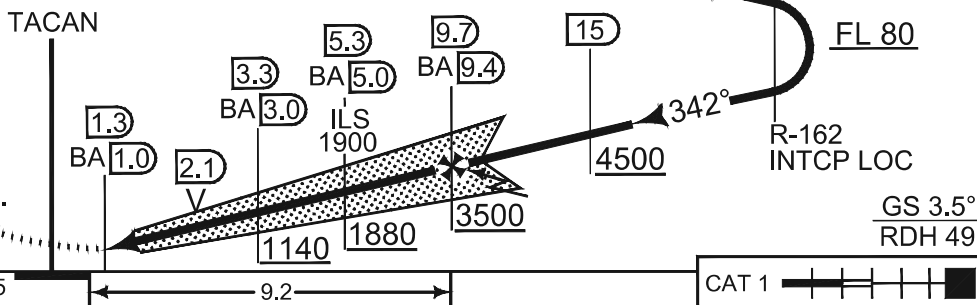


**SAFE ALT 100 NM 7400**

DME	2	3	4	5	6	7	8	9	IAF	TA 7000
ALT BNK	-	1000	1380	1760	2140	2520	2910	3290	FL 100	LEFT TURN
ALT BA	760	1130	1510	1890	2270	2660	3040	3430	FL 90 -R-179	AT 20

**MISSED APPROACH**

Climb straight ahead. When passing 500 ft, intercept BNK R-353 outbound. Passing 4000 ft, turn right DCT BNK. Passing BNK continue outbound on R-179 to IAF. Climb to FL 090.



CATEGORY	HPMA
S-ILS 34	251 - 550 226 (300 - 0.8/1.2)
S-LOC 34	670 - 2300 645 (700 - 2.3/3.0)
CIRCLING	1100 - 3.2 1074 (1100 - 3.2)

HPMA ILS or LOC RWY 34

70°04.00' N  
024°58.43' E

BANAK (ENNA)

vJaBoG32

TWR/GND : 250.50  
Heimdall : 348.7

Var 13° E

91  
RWY 16 THR Elev 16ft  
2785 x 45 Grooved Concrete / Asphalt



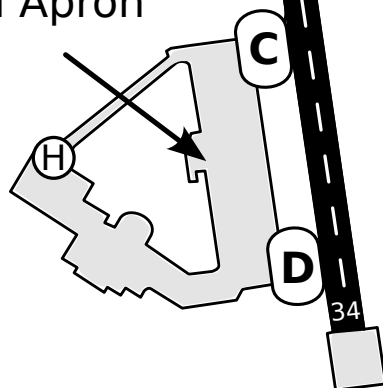
General Aviation

BNK  
CH 47



Civ Apron

Mil Apron



RWY 34 THR Elev 25ft

