

MISSION DATA CARD

OPORD		Callsign		Mission		Date/Time		
4147/2025		Raptor 2		Training		062000OCT25		
Task	SEAD					Freq		
AO	ESR01					134.25		
Departure				Recovery				
VFR Departure				VFR Approach				
#	Callsign		Pilot		IFF	TCN	LSR	NET
-1	Raptor 2-1		Jinx		1621	1Y	1621	
-2	Raptor 2-2		Hercules		1622	64Y	1622	
-3	Raptor 2-3		Cyking		1623	64X	1623	

LOADOUT

A/A	2xA120C, 2xA9X				GUN	100% HEI-T	
A/G	2xA88C				CHF	60	
POD	HTS, A184, ATP				FLR	60	
TKS	2xFT370				FUEL	100%	

TOLD

	Takeoff	Target	Joker	Bingo	Land
FUEL	12113				

AIRBASES

	Name	TCN	ATIS	GND	TWR	RWY	Elev	ILS
Dep	Rovaniemi	14X	282.8	282.5	250.55	21	643	111.7
Arr	Rovaniemi	14X	282.8	282.5	250.55	21	643	111.7
Div	Kemi Tornio	106X			250.3	36	62	110.9

FLIGHTPLAN

#	Name	Navaid/Coords/DME	ALT	TOT
1	IMARI	N66 28.406 E025 31.291	5000	
2	IBSAN	N66 42.500 E025 01.083	20000	
3	SEPJA	N67 27.300 E021 12.080	20000	
4	SAM	N68 25.163 E021 12.343	0	
5	NAFFI	N67 04.630 E023 11.660	20000	
6	OSLIT	N66 51.750 E025 24.383	20000	
7	PERUN	N66 44.135 E026 01.630	5000	
8	RVN	N66 33.871 E025 49.730	0	

SUPPORT**Tanker**

Callsign	TCN	Freq	ALT	TAS
TEXACO 1	71Y	265.0		
	Pos			
ARCO 1	22Y	319.8		
	Pos			

OTHER FLIGHTS

Callsign	Mission	Airframe	Freq	TCN	Grpld	Laser
Tiger 1	Training	4x F/A-18C	261.15	1/64	1	155X
AO	ENR01	Task	BVR Training			
Raptor 1	Training	4x F-16C	134.0	1/64		162X
AO	ESR01	Task	SEAD			
T-Rex 1	Training	4x A-10C	132.25	1/64	25	165X
AO	ESR03	Task	A2G Training			
Snake 1	Training	4x AH-64D	133.5	1/64		170X
AO	Ivalo	Task				
Wolf* 1	Training	4x CH-47F	133.5	1/64		170X
AO	Ivalo	Task				
Panther 3	Training	4x F/A-18C	261.35	1/64	2	155X
AO	ENR06	Task	Anti Ship			
Axe 1	Training	1x JF-17	264.05	1/64		170X
AO		Task				

RADIO CHANNELS

#	Freq	Name
1		Flight/Squadron specific
2	282.8	Rovaniemi ATIS
3	282.5	Rovaniemi Ground
4	250.55	Rovaniemi Tower
5	320.7	Bodo ATIS
6	250.75	Bodo Tower
7	235.45	Kallax ATIS
8	250.3	Kallax Tower
9	265.0	Texaco-1 KC-135 Medium / Slow 71Y
10	319.8	Arco-1 KC-135 High / Fast 22Y
11	360.8	Shell-1 KC-135 MPRS High / Fast 41Y
12	304.0	CVN-71 Rough Rider (RRR) 71X
13	303.0	LHA-1 Tarawa (TWA) 79X
14	247.8	S-3B Mauler-1 (MAU) 64Y
15	347.8	Loki (E-2D)
16	348.7	Heimdall (E-3A)
17	242.17	ESR02 - CAS Range Operator
18	34.7	ESR02 - JTAC Odin
19	270.5	Blue
20	270.75	Red

RAMROD

0	1	2	3	4	5	6	7	8	9
C	O	R	N	F	L	A	K	E	S

KTC 1400 C

	0	1	2	3	4	5	6	7	8	9
A	EAOT	JPQ	LDS	MU	GC	VRW	FH	XN	BY	IK
B	JHTY	VLN	EGX	CD	IQ	MSW	PB	FA	UO	RK
C	IOKW	JND	MRV	GB	AU	CHS	PX	EF	YL	TQ
D	NQHK	OWB	MCR	FG	LD	EVJ	ST	XP	IU	AY
E	PNVI	TOR	FKH	DC	BG	JWU	XS	YL	AQ	EM
F	AEOX	NPF	QYS	KU	HB	LWR	JM	VI	TD	CG
G	BASI	OTH	JXR	UV	EK	DLN	FY	QG	MP	WC
H	MHCO	FQI	DSP	LX	TK	AYU	BR	EV	JW	GN
I	WYXH	JMT	LRE	PN	DO	CSB	FI	UA	VQ	GK
J	KJSW	UQB	RAX	NY	DI	GFM	HC	LE	TO	VP
K	QFND	TYB	ORG	JW	XI	PUC	ML	EH	KS	AV
L	YGLW	QSD	ERN	IM	PU	CJV	OX	BH	KA	FT
M	HTBM	YIC	OLA	UQ	PN	KDE	FJ	XR	GS	VW
N	SJMT	GKV	DBE	HO	WL	QIP	RN	YC	FU	XA
O	RXPE	JNA	IFQ	KD	VG	BLW	CO	TY	UM	HS
P	XKMD	YIV	ORF	WQ	UJ	BSC	GN	HA	ET	LP
Q	HWBA	GYE	KTI	XO	UD	LSV	CR	QN	FP	JM
R	KYUX	EMP	SQD	TO	RJ	LWH	FA	CB	NG	VI
S	FWQB	ROD	JKC	UY	PI	ALS	GE	XT	MH	VN
T	BGTP	JHR	VAU	KF	WC	DYO	EN	IM	SQ	LX
U	BXSA	QRP	GFE	IC	MU	KJO	NL	VY	WT	DH
V	VJGH	ORP	BYW	ML	KQ	XTE	ND	UA	IC	SF
W	LXKJ	SFE	NOR	MU	CI	YWT	DQ	PH	VB	GA
X	PSDG	EBQ	HKF	IJ	UM	OTY	VN	LW	AR	XC
Y	GUEO	MAN	KTJ	HF	SC	BXW	PL	VQ	DY	IR

NAVAIDS

Id	Name	Channel	Position	Elevation
BOO	Bodo	45	N67 15.838 E014 20.046	43
BNK	Banak	47	N70 03.937 E024 58.181	17
OYA	Andoya	28	N69 17.175 E016 08.658	19

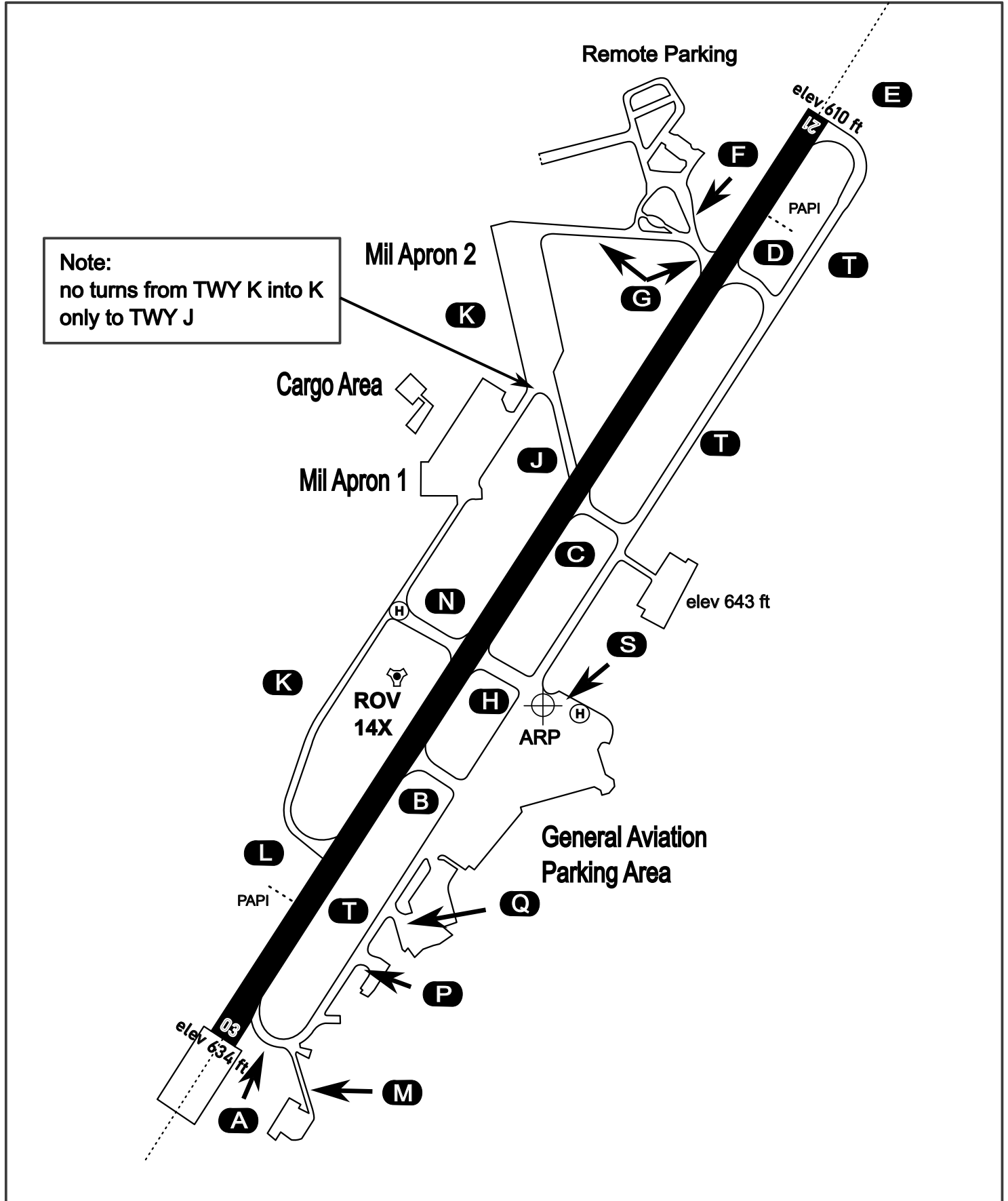
AERODROME CHART

Rovaniemi Aerodrome

ARP N66° 33' 42" E025° 49' 51"

elev 643 ft

ROVANIEMI, FINLAND

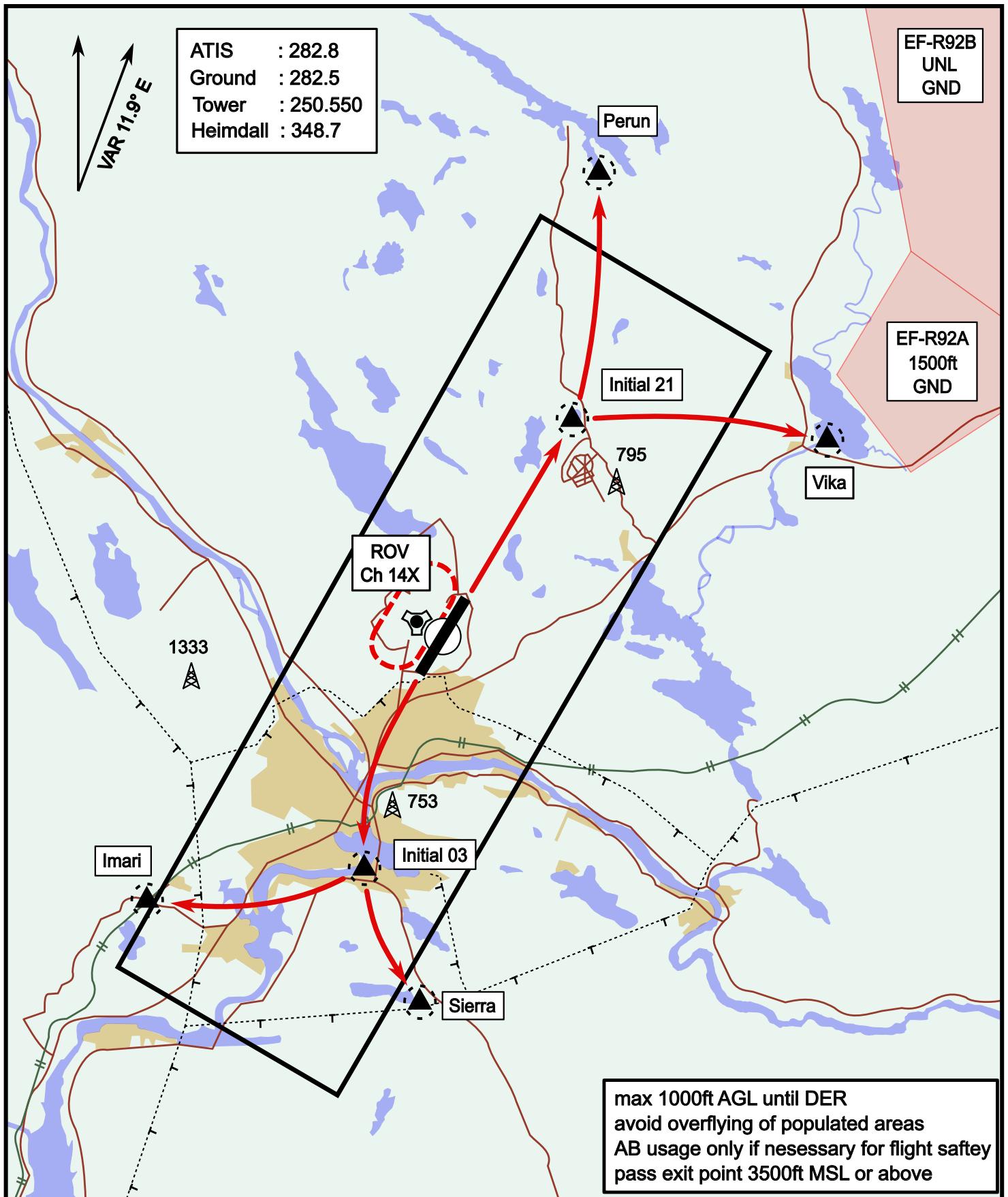


ATIS	Ground	Tower	Radar
282.800	282.500	250.550	348.700

Visual Departure Jet

elev 643 ft

Rovaniemi, Finland



Vika	N66° 37.474 / E026° 13.557
Perun	N66° 44.135 / E026° 01.630
Initial21	N66° 38.421 / E025° 58.682
Sierra	N66° 25.711 / E025° 46.610
Imari	N66° 28.406 / E025° 31.291
Initial03	N66° 28.793 / E025° 44.105

Visual Approach Jet

elev 643 ft

Rovaniemi, Finland



Vika	N66° 37.474 / E026° 13.557	Sierra	N66° 25.711 / E025° 46.610
Perun	N66° 44.135 / E026° 01.630	Imari	N66° 28.406 / E025° 31.291
Initial21	N66° 38.421 / E025° 58.682	Initial03	N66° 28.793 / E025° 44.105

NOT AVAILABLE

NOT AVAILABLE