

MISSION DATA CARD

OPORD		Callsign		Mission		Date/Time		
4142/2025		T-Rex 1		Training		062000OCT25		
Task	A2G Training					Freq		
AO	ESR03					132.25		
Departure				Recovery				
VFR Departure				VFR Approach				
#	Callsign		Pilot		IFF	TCN	LSR	NET
-1	T-Rex 1-1		Stoner		1511	1Y	1651	25/01
-2	T-Rex 1-2		addiks		1512	64Y	1652	25/02
-3	T-Rex 1-3		Lenzi		1513	64X	1653	25/03

LOADOUT

A/A	A9M				GUN	100% CM	
A/G	6xA65D, 4xG12, 7M282L				CHF	240	
POD	TGP, A184				FLR	240	
TKS					FUEL	100%	

TOLD

	Takeoff	Target	Joker	Bingo	Land
FUEL	11087				

AIRBASES

	Name	TCN	ATIS	GND	TWR	RWY	Elev	ILS
Dep	Rovaniemi	14X	282.8	282.5	250.55	21	643	111.7
Arr	Rovaniemi	14X	282.8	282.5	250.55	21	643	111.7

FLIGHTPLAN

#	Name	Navaid/Coords/DME	ALT	TOT
1	RVNInit03	N66 28.793 E025 44.105	2000	
2	IMARI	N66 28.406 E025 31.291	4000	
3	NEMGU	N66 20.400 E024 41.650	10000	
4	T.ESR03.04	N66 19.596 E022 50.268		
5	T.ESR03.05	N66 18.534 E023 11.346		
6	T.ESR03.08	N65 59.778 E023 16.320		
7	NEMGU	N66 20.400 E024 41.650	8000	
8	PERUN	N66 44.135 E026 01.630	2500	
9	RVNInit21	N66 38.642 E025 58.682	2500	

COMMS

Radio	Usage
1	132.25
3	320.00

NOTES

- Training für Donnerstag Mission
- IFF: Mode 1 Set 32 / Mode 4 ON

OTHER FLIGHTS

Callsign	Mission	Airframe	Freq	TCN	Grpld	Laser
Tiger 1	Training	4x F/A-18C	261.15	1/64	1	155X
AO	ENR01	Task	BVR Training			
Raptor 1	Training	4x F-16C	134.0	1/64		162X
AO	ESR01	Task	SEAD			
Snake 1	Training	4x AH-64D	133.5	1/64		170X
AO	Ivalo	Task				
Wolf* 1	Training	4x CH-47F	133.5	1/64		170X
AO	Ivalo	Task				
Raptor 2	Training	4x F-16C	134.25	1/64		162X
AO	ESR01	Task	SEAD			
Panther 3	Training	4x F/A-18C	261.35	1/64	2	155X
AO	ENR06	Task	Anti Ship			
Axe 1	Training	1x JF-17	264.05	1/64		170X
AO		Task				

RADIO CHANNELS

#	Freq	Name
1		Flight/Squadron specific
2	282.8	Rovaniemi ATIS
3	282.5	Rovaniemi Ground
4	250.55	Rovaniemi Tower
5	320.7	Bodo ATIS
6	250.75	Bodo Tower
7	235.45	Kallax ATIS
8	250.3	Kallax Tower
9	265.0	Texaco-1 KC-135 Medium / Slow 71Y
10	319.8	Arco-1 KC-135 High / Fast 22Y
11	360.8	Shell-1 KC-135 MPRS High / Fast 41Y
12	304.0	CVN-71 Rough Rider (RRR) 71X
13	303.0	LHA-1 Tarawa (TWA) 79X
14	247.8	S-3B Mauler-1 (MAU) 64Y
15	347.8	Loki (E-2D)
16	348.7	Heimdall (E-3A)
17	242.17	ESR02 - CAS Range Operator
18	34.7	ESR02 - JTAC Odin
19	270.5	Blue
20	270.75	Red

RAMROD

0	1	2	3	4	5	6	7	8	9
C	O	R	N	F	L	A	K	E	S

KTC 1400 C

	0	1	2	3	4	5	6	7	8	9
A	EAOT	JPQ	LDS	MU	GC	VRW	FH	XN	BY	IK
B	JHTY	VLN	EGX	CD	IQ	MSW	PB	FA	UO	RK
C	IOKW	JND	MRV	GB	AU	CHS	PX	EF	YL	TQ
D	NQHK	OWB	MCR	FG	LD	EVJ	ST	XP	IU	AY
E	PNVI	TOR	FKH	DC	BG	JWU	XS	YL	AQ	EM
F	AEOX	NPF	QYS	KU	HB	LWR	JM	VI	TD	CG
G	BASI	OTH	JXR	UV	EK	DLN	FY	QG	MP	WC
H	MHCO	FQI	DSP	LX	TK	AYU	BR	EV	JW	GN
I	WYXH	JMT	LRE	PN	DO	CSB	FI	UA	VQ	GK
J	KJSW	UQB	RAX	NY	DI	GFM	HC	LE	TO	VP
K	QFND	TYB	ORG	JW	XI	PUC	ML	EH	KS	AV
L	YGLW	QSD	ERN	IM	PU	CJV	OX	BH	KA	FT
M	HTBM	YIC	OLA	UQ	PN	KDE	FJ	XR	GS	VW
N	SJMT	GKV	DBE	HO	WL	QIP	RN	YC	FU	XA
O	RXPE	JNA	IFQ	KD	VG	BLW	CO	TY	UM	HS
P	XKMD	YIV	ORF	WQ	UJ	BSC	GN	HA	ET	LP
Q	HWBA	GYE	KTI	XO	UD	LSV	CR	QN	FP	JM
R	KYUX	EMP	SQD	TO	RJ	LWH	FA	CB	NG	VI
S	FWQB	ROD	JKC	UY	PI	ALS	GE	XT	MH	VN
T	BGTP	JHR	VAU	KF	WC	DYO	EN	IM	SQ	LX
U	BXSA	QRP	GFE	IC	MU	KJO	NL	VY	WT	DH
V	VJGH	ORP	BYW	ML	KQ	XTE	ND	UA	IC	SF
W	LXKJ	SFE	NOR	MU	CI	YWT	DQ	PH	VB	GA
X	PSDG	EBQ	HKF	IJ	UM	OTY	VN	LW	AR	XC
Y	GUEO	MAN	KTJ	HF	SC	BXW	PL	VQ	DY	IR

NAVAIDS

Id	Name	Channel	Position	Elevation
BOO	Bodo	45	N67 15.838 E014 20.046	43
BNK	Banak	47	N70 03.937 E024 58.181	17
OYA	Andoya	28	N69 17.175 E016 08.658	19

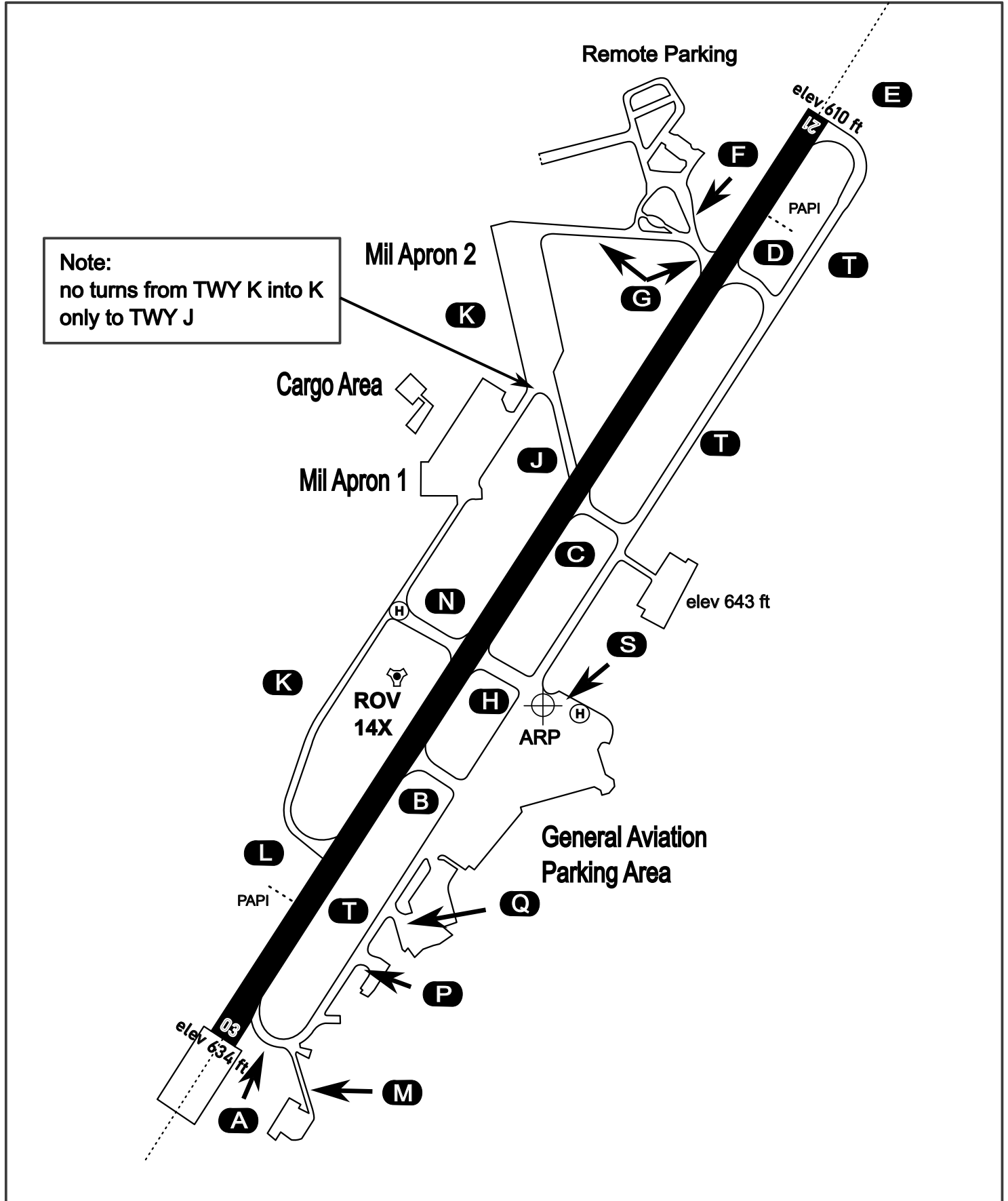
AERODROME CHART

Rovaniemi Aerodrome

ARP N66° 33' 42" E025° 49' 51"

elev 643 ft

ROVANIEMI, FINLAND

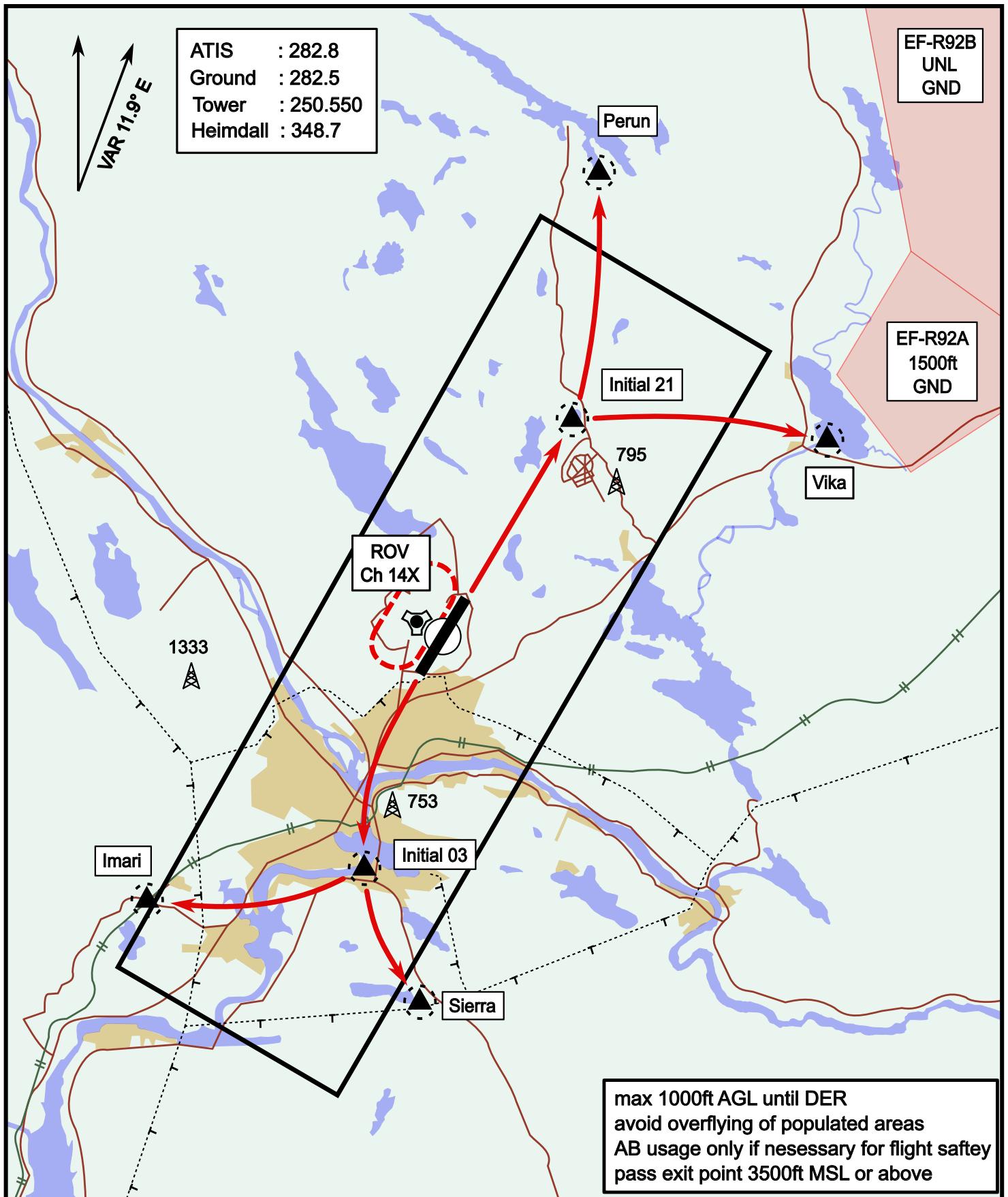


ATIS	Ground	Tower	Radar
282.800	282.500	250.550	348.700

Visual Departure Jet

elev 643 ft

Rovaniemi, Finland



ATIS : 282.8
 Ground : 282.5
 Tower : 250.550
 Heimdall : 348.7

VAR 11.9° E

EF-R92B
 UNL
 GND

EF-R92A
 1500ft
 GND

max 1000ft AGL until DER
 avoid overflying of populated areas
 AB usage only if necessary for flight safety
 pass exit point 3500ft MSL or above

Vika	N66° 37.474 / E026° 13.557	Sierra	N66° 25.711 / E025° 46.610
Perun	N66° 44.135 / E026° 01.630	Imari	N66° 28.406 / E025° 31.291
Initial21	N66° 38.421 / E025° 58.682	Initial03	N66° 28.793 / E025° 44.105

Visual Approach Jet

elev 643 ft

Rovaniemi, Finland



Vika	N66° 37.474 / E026° 13.557	Sierra	N66° 25.711 / E025° 46.610
Perun	N66° 44.135 / E026° 01.630	Imari	N66° 28.406 / E025° 31.291
Initial21	N66° 38.421 / E025° 58.682	Initial03	N66° 28.793 / E025° 44.105