

MISSION DATA CARD

OPORD		Callsign		Mission		Date/Time	
4135/2025		Raptor 1		SEAD		092000OCT25	
Task	SEAD						Freq
AO	ATO WEST: Bravo 1 / Charlie 2 / Alpha 1 / Alpha 2						134.0
Departure				Recovery			
none				none			
#	Callsign	Pilot	IFF	TCN	LSR	NET	
-1	Raptor 1-1	Void	1611	1Y	1621		
-2	Raptor 1-2	Hercules	1612	64Y	1622		
-3	Raptor 1-3	Woodman	1613	64X	1623		
-4	Raptor 1-4	Beathovenz	1614	1X	1624		

LOADOUT

A/A	4xA120C	GUN	100% SAPHEI
A/G	4xA88C	CHF	90
POD	HTS, TGP	FLR	30
TKS	FT300	FUEL	100%

TOLD

	Takeoff	Target	Joker	Bingo	Land
FUEL	9169	7000	3000	2000	1000

AIRBASES

	Name	TCN	ATIS	GND	TWR	RWY	Elev	ILS
Dep	Kittila				250.7	34	644	111.9
Arr	Kittila				250.7	34	644	111.9
Div	Banak	47X			250.5	34	26	109.1

FLIGHTPLAN

#	Name	Navaid/Coords/DME	ALT	TOT
1	OMNI	N67 45.090 E024 49.030	2090	
2	SID34 / XETM1D	N67 45.080 E024 48.950	2090	
3	STAR34/16 /XETMU	N67 52.410 E025 22.070	10000	
4	IP SAM Ivalo 220/6	N68 31.793 E026 21.385	20000	
5	IP SAM Ivalo 330/20	N68 50.570 E025 51.952	20000	
6	Holding Fix	N68 42.278 E025 32.093	20000	
7	P SAM Ivalo 330/20	N68 55.724 E026 53.769	550	
8	s SAM Ivalo 220/6	N68 32.195 E027 08.559	460	
9	STAR34/16 /XETMU	N67 52.410 E025 22.070	10000	
10	STAR34 /ADONA	N67 32.010 E025 10.740	3800	
11	STAR34 /XIVPA	N67 30.860 E024 57.970	3800	
12	Kittila EFKT	N67 42.170 E024 50.714	641	

COMMS

Radio	Usage
1	2, 250.7, 16, 2, 250.7

NOTES

PRIMARY SA-22/11 north / SEAD cover @A-10
Secondary SA-22/11 south RECON @AH-64, SEAD

SUPPORT**Tanker**

Callsign	TCN	Freq	ALT	TAS
TEXACO 1	71Y	265.0		
	Pos			
ARCO 1	22Y	319.8		
	Pos			

AWACS

Callsign	Freq	ALT	Pos
HEIMDALL	348.7		

OTHER FLIGHTS

Callsign	Mission	Airframe	Freq	TCN	Grpld	Laser
Panther 7	Recce	2x F/A-18C	261.15	1/64		155X
AO	KillBox F1,E1,F2,(E2)	Task	Armed Recce - SEAD / Sweep - (Late Comer)			
Tiger 1	Recce	2x F/A-18C	261.25	1/64		155X
AO	Recce North	Task	Recce Ship			
Nazgul 6	CAP	4x F-15E	262.45	1/64		156X
AO	CAP North	Task	CAP			
T-Rex 1	CAS	4x A-10C	132.25	1/64	25	165X
AO	ATO A2G / Grid Bravo 2 and Charlie 2	Task	CAS			
Rattler 2	BAI	2x AH-64D	133.5	1/64		125X
AO	Ivalo	Task	BAI			
Outlaw 1	Transport	1x CH-47F	348.7	1/64		170X
AO	Ivalo	Task	SAR + Transport			
Raptor 2	CAP	3x F-16C	134.25	1/64		162X
AO	CAP South	Task	CAP			

RADIO CHANNELS

#	Freq	Name
1		Flight/Squadron specific
2	282.8	Rovaniemi ATIS
3	282.5	Rovaniemi Ground
4	250.55	Rovaniemi Tower
5	320.7	Bodo ATIS
6	250.75	Bodo Tower
7	235.45	Kallax ATIS
8	250.3	Kallax Tower
9	265.0	Texaco-1 KC-135 Medium / Slow 71Y
10	319.8	Arco-1 KC-135 High / Fast 22Y
11	360.8	Shell-1 KC-135 MPRS High / Fast 41Y
12	304.0	CVN-71 Rough Rider (RRR) 71X
13	303.0	LHA-1 Tarawa (TWA) 79X
14	247.8	S-3B Mauler-1 (MAU) 64Y
15	347.8	Loki (E-2D)
16	348.7	Heimdall (E-3A)
17	242.17	ESR02 - CAS Range Operator
18	34.7	ESR02 - JTAC Odin
19	270.5	Blue
20	270.75	Red

RAMROD

0	1	2	3	4	5	6	7	8	9
P	O	L	Y	T	H	E	I	S	M

KTC 1400 C

	0	1	2	3	4	5	6	7	8	9
A	JQGI	BTW	XVM	SA	NH	FKP	RU	OD	YC	LE
B	NOTB	LKD	IJS	XH	VE	RQC	UA	FM	WY	GP
C	GURN	FPK	WEJ	YV	LA	SID	TH	CO	XB	MQ
D	HAPW	EQX	BLJ	MV	DG	UCR	SK	IF	TN	YO
E	UEKQ	ALM	TDG	BC	VF	JOY	IN	SH	PR	WX
F	GLCY	ASR	WVU	XT	BQ	DKF	IP	MH	JE	NO
G	PFLE	XVH	IJN	BU	AC	QGY	WS	TO	DM	KR
H	JOBN	WFR	IQL	CT	PM	XYK	EU	SD	AV	GH
I	MICQ	KWR	PFY	BS	AH	DVN	JL	EO	UX	GT
J	FTAR	PNM	LGB	UQ	HC	JIW	EV	YS	XK	OD
K	NADO	THV	ESU	KW	BI	CYJ	XG	QF	LP	RM
L	KJPX	DIE	RSH	TU	OV	FGN	YA	MQ	CL	WB
M	BFKJ	HNL	EGP	WS	XD	YUR	TA	OQ	MV	CI
N	RCEK	QOD	AYW	HF	UL	NIB	XT	MJ	GS	PV
O	TVJX	NYS	IMD	AF	KL	WRE	UQ	HG	BO	PC
P	XBDV	SCF	UMO	IN	KE	PLR	TW	YA	JQ	GH
Q	CJXL	KNF	HPM	AS	YU	GVQ	RI	EO	TW	DB
R	VEAO	WGU	LDR	MQ	CB	PST	HN	JI	KX	FY
S	APXY	FDU	LIE	NJ	BR	QCO	WM	GV	SK	HT
T	QGNP	TKX	RWD	SY	IL	JVH	CF	MA	UO	BE
U	YNIO	HLJ	FSD	VQ	UT	GKW	PA	EB	RX	MC
V	CJBA	DMG	LIY	OF	WT	XQH	PK	VU	NR	ES
W	MVUY	AQW	JFS	IE	BD	LHC	XT	RK	OP	NG
X	TVDN	EXQ	LMU	YW	SH	ABK	IC	GR	OP	FJ
Y	KENQ	RIJ	HLM	DX	VU	BWY	OT	GA	CS	FP

NAVAIDS

Id	Name	Channel	Position	Elevation
BOO	Bodo	45	N67 15.838 E014 20.046	43
BNK	Banak	47	N70 03.937 E024 58.181	17
OYA	Andoya	28	N69 17.175 E016 08.658	19

NOT AVAILABLE

NOT AVAILABLE

NOT AVAILABLE

MIPS INSTRUMENT APPROACH CHART

AD ELEV 26

HPMA ILS or LOC RWY 34
BANAK (ENNA)

ATIS
N/A

BANAK TWR / APPR
250.50 / 348.7

LOCALIZER/DME BA 108.300 / CH 20X	APP COURSE 342°	GS INTCP ALT 3500	GS 3.5°	DA 251	THR ELEV 25	ALS 737 m	LDA 8543
--------------------------------------	--------------------	----------------------	------------	-----------	----------------	--------------	-------------

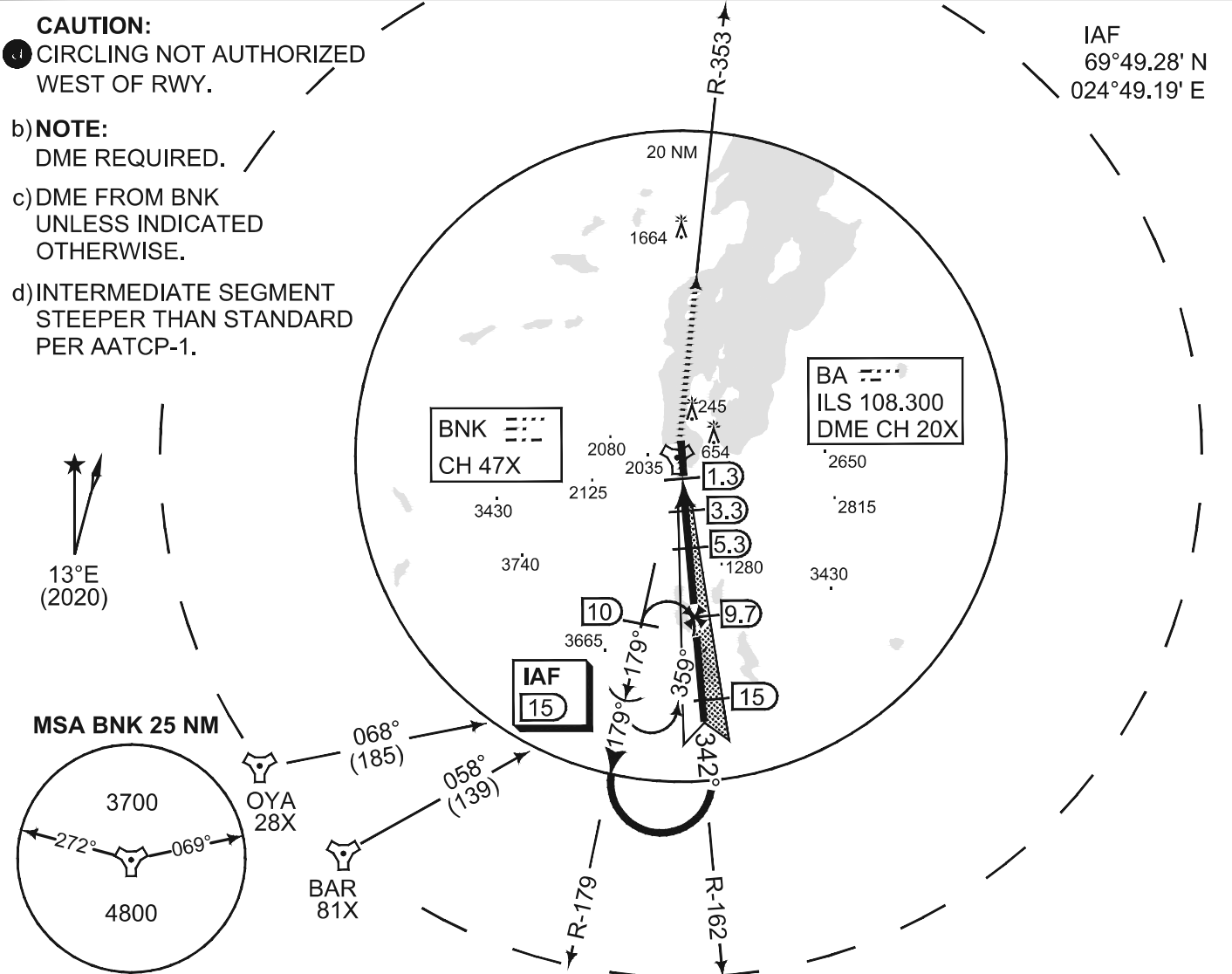
CAUTION:
CIRCLING NOT AUTHORIZED WEST OF RWY.

b) **NOTE:**
DME REQUIRED.

c) DME FROM BNK UNLESS INDICATED OTHERWISE.

d) INTERMEDIATE SEGMENT STEEPER THAN STANDARD PER AATCP-1.

IAF
69°49.28' N
024°49.19' E

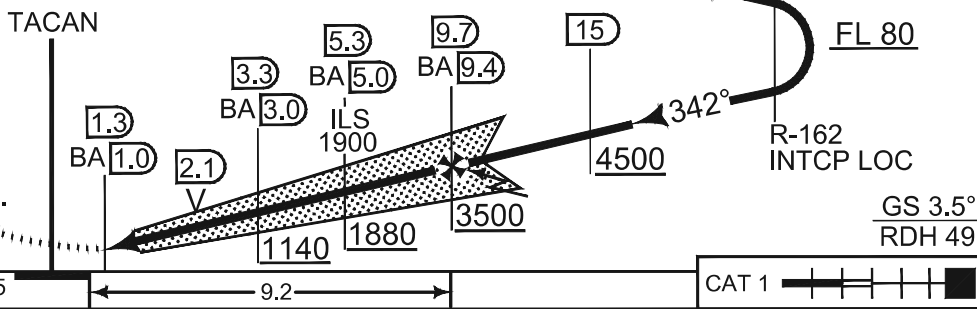


SAFE ALT 100 NM 7400

DME	2	3	4	5	6	7	8	9
ALT BNK	-	1000	1380	1760	2140	2520	2910	3290
ALT BA	760	1130	1510	1890	2270	2660	3040	3430

FL 100	IAF 15	LEFT TURN	TA 7000
FL 90	-R-179	AT 20	

MISSED APPROACH
Climb straight ahead. When passing 500 ft, intercept BNK R-353 outbound. Passing 4000 ft, turn right DCT BNK. Passing BNK continue outbound on R-179 to IAF. Climb to FL 090.



THR ELEV 25

9.2

CAT 1

GS 3.5°
RDH 49

CATEGORY	HPMA
S-ILS 34	251 - 550 226 (300 - 0.8/1.2)
S-LOC 34	670 - 2300 645 (700 - 2.3/3.0)
CIRCLING	1100 - 3.2 1074 (1100 - 3.2)

HPMA ILS or LOC RWY 34

70°04.00' N
024°58.43' E

BANAK (ENNA)

vJaBoG32

TWR/GND : 250.50
Heimdall : 348.7

Var 13° E

91
RWY 16 THR Elev 16ft
2785 x 45 Grooved Concrete / Asphalt



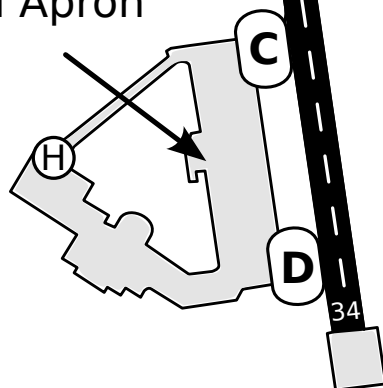
General Aviation

BNK
CH 47



Civ Apron

Mil Apron



RWY 34 THR Elev 25ft

