

**MISSION DATA CARD**

OPORD		Callsign		Mission		Date/Time		
4126/2025		T-Rex 1		Training		292030SEP25		
Task	BAI					Freq		
AO	ESR03					132.25		
Departure				Recovery				
VFR Departure				VFR Approach				
#	Callsign		Pilot		IFF	TCN	LSR	NET
-1	T-Rex 1-1		Toolface		1421	1Y	1621	20/01
-2	T-Rex 1-2		Stoner		1422	64Y	1622	20/02

**LOADOUT**

A/A	2xA9M				GUN	100% CM	
A/G	4xA65D, 3x7M282L				CHF	240	
POD	TGP, A184L				FLR	240	
TKS					FUEL	75%	

**TOLD**

	Takeoff	Target	Joker	Bingo	Land
FUEL	8315				

**AIRBASES**

	Name	TCN	ATIS	GND	TWR	RWY	Elev	ILS
Dep	Rovaniemi	14X	282.8	282.5	250.55	21	643	111.7
Arr	Rovaniemi	14X	282.8	282.5	250.55	21	643	111.7
Div	Kallax		235.45		250.3	32	66	109.9

**FLIGHTPLAN**

#	Name	Navaid/Coords/DME	ALT	TOT
1	RVNInit21	N66 38.642 E025 58.682		
2	PERUN	N66 44.135 E026 01.630		
3	VIKA	N66 37.474 E026 13.557		
4	T.ESR03.05	N66 18.534 E023 11.346		
5	IMARI	N66 28.406 E025 31.291		
6	SIERRA	N66 25.711 E025 46.610		
7	RVNInit03	N66 28.793 E025 44.105		

**COMMS**

Radio	Usage
1	132.25
2	2-4-16-4-2
3	32.00

## NOTES

- Attack Briefings
- Tactical Formations

**OTHER FLIGHTS**

Callsign	Mission	Airframe	Freq	TCN	Grpld	Laser
Tiger 1	Training	4x F/A-18C	261.15	1/64	1	155X
AO	ENR06	Task	Anti Ship			
Panther 3	Training	2x F/A-18C	261.35	1/64	2	155X
AO	ENR06	Task	Anti Ship			
Monster 1	Training	3x A-10C	132.15	1/64	21	161X
AO	ESR03	Task	BAI			
Raptor 1	Training	4x F-16C	134.0	1/64		162X
AO	ESR01	Task	SEAD			

## RADIO CHANNELS

#	Freq	Name
1		Flight/Squadron specific
2	282.8	Rovaniemi ATIS
3	282.5	Rovaniemi Ground
4	250.55	Rovaniemi Tower
5	320.7	Bodo ATIS
6	250.75	Bodo Tower
7	235.45	Kallax ATIS
8	250.3	Kallax Tower
9	265.0	Texaco-1   KC-135   Medium / Slow   71Y
10	319.8	Arco-1   KC-135   High / Fast   22Y
11	360.8	Shell-1   KC-135 MPRS   High / Fast   41Y
12	304.0	CVN-71 Rough Rider (RRR)   71X
13	303.0	LHA-1 Tarawa (TWA)   79X
14	247.8	S-3B Mauler-1 (MAU)  64Y
15	347.8	Loki (E-2D)
16	348.7	Heimdall (E-3A)
17	242.17	ESR02 - CAS Range Operator
18	34.7	ESR02 - JTAC Odin
19	270.5	Blue
20	270.75	Red

**RAMROD**

0	1	2	3	4	5	6	7	8	9
D	E	B	O	N	A	I	R	L	Y

**KTC 1400 C**

	0	1	2	3	4	5	6	7	8	9
A	HNWJ	RGY	WBC	KD	TP	FAO	ML	EI	US	XQ
B	FWVC	LHT	JBD	YX	OA	RSM	KN	GI	UQ	PE
C	IFXJ	RWM	KPG	DE	UB	CSV	QH	NL	OT	AY
D	YLCP	VIW	JSF	QR	XH	UTG	AO	EM	BN	KD
E	VRKP	IMD	QJU	LE	YB	GNX	AW	TH	SO	CF
F	MNYK	ESU	WXI	PA	OH	TFQ	CJ	RB	VD	LG
G	IOKV	PNJ	QEA	HB	GW	TDS	FC	UR	LX	MY
H	LEXU	HRK	QBJ	WO	GN	FVT	PC	DY	SA	MI
I	CBOA	IFE	HQR	TD	WS	YLU	MV	GK	PJ	XN
J	ITDN	JAU	GEY	FK	BX	MCO	VW	SL	QP	RH
K	LATG	DIQ	OKB	JW	EU	XRM	SF	PY	VC	NH
L	CBTG	MLP	YWK	OH	XR	ADE	JQ	UF	NV	SI
M	SWKU	OVJ	EMD	LI	GH	PBX	AF	NT	YQ	CR
N	YOWN	JMC	QBT	RD	VI	XKP	AG	US	EH	LF
O	EDVM	UOI	RJS	NX	QY	PCA	BW	FG	KL	TH
P	DSPX	VGQ	ALI	HN	BT	EJC	WK	FR	YO	UM
Q	CTMD	ANR	EWG	FK	OS	IYQ	BU	LP	XH	JV
R	TJFQ	WPA	RIU	SY	OH	LEN	CD	XB	GM	KV
S	HVGT	ORI	BMQ	EN	DC	AKW	SJ	YL	XP	FU
T	UKTB	GWJ	XLR	VS	FY	CHO	DE	NP	AQ	JM
U	UICF	ELG	TXA	VB	QP	KDR	MN	WO	HS	YJ
V	RTNY	WGD	AQK	UF	IC	JVB	SP	ML	HO	XE
W	WICK	OLY	TFA	VQ	SP	HRU	NB	DE	GM	JX
X	OTXS	EMF	IQU	AJ	YG	BNK	LR	HC	DP	VW
Y	XDLW	FVB	KJM	YE	UH	IRQ	NP	TA	SC	OG

**NAVAIDS**

Id	Name	Channel	Position	Elevation
BOO	Bodo	45	N67 15.838 E014 20.046	43
BNK	Banak	47	N70 03.937 E024 58.181	17
OYA	Andoya	28	N69 17.175 E016 08.658	19

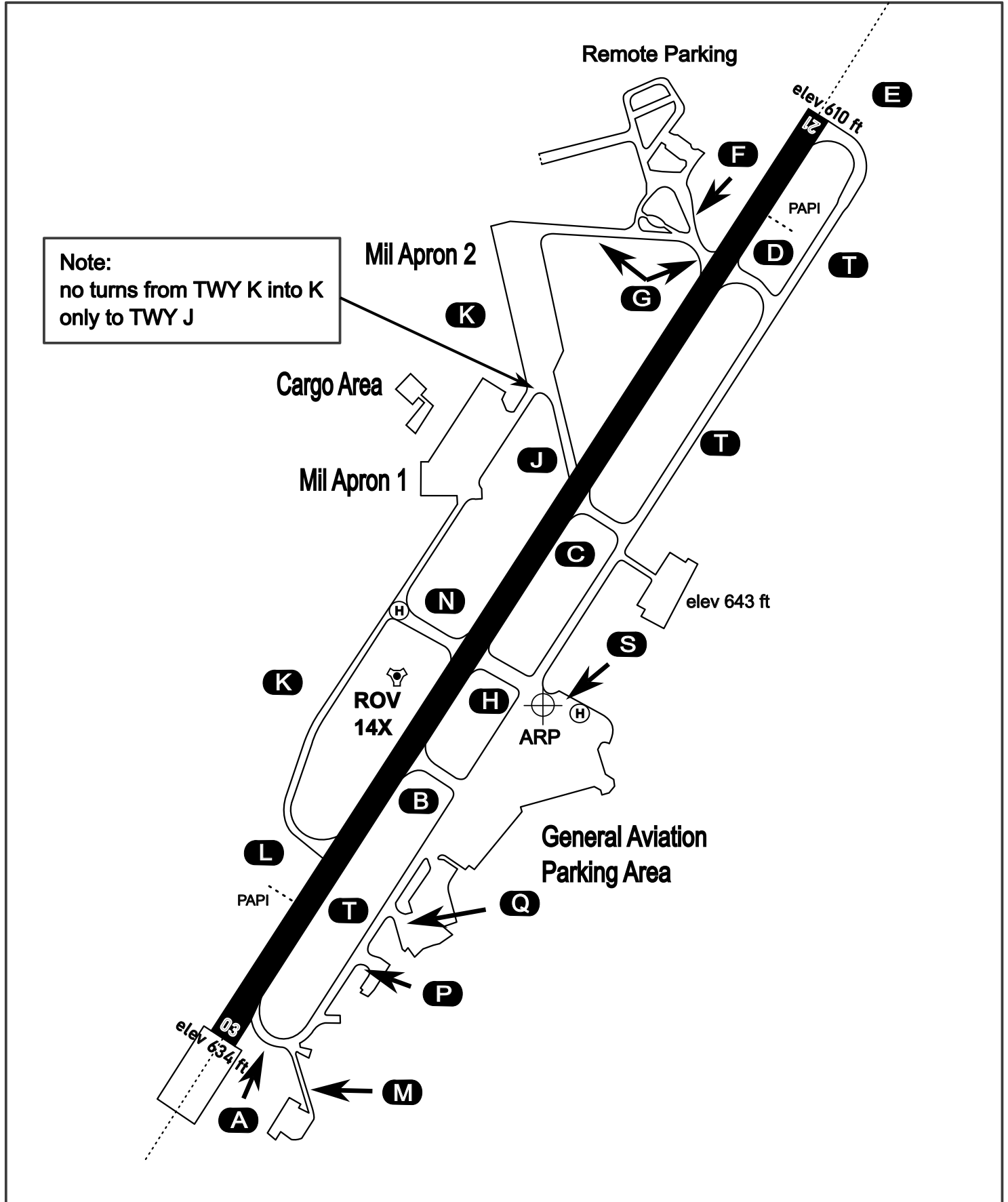
# AERODROME CHART

Rovaniemi Aerodrome

ARP N66° 33' 42" E025° 49' 51"

elev 643 ft

## ROVANIEMI, FINLAND



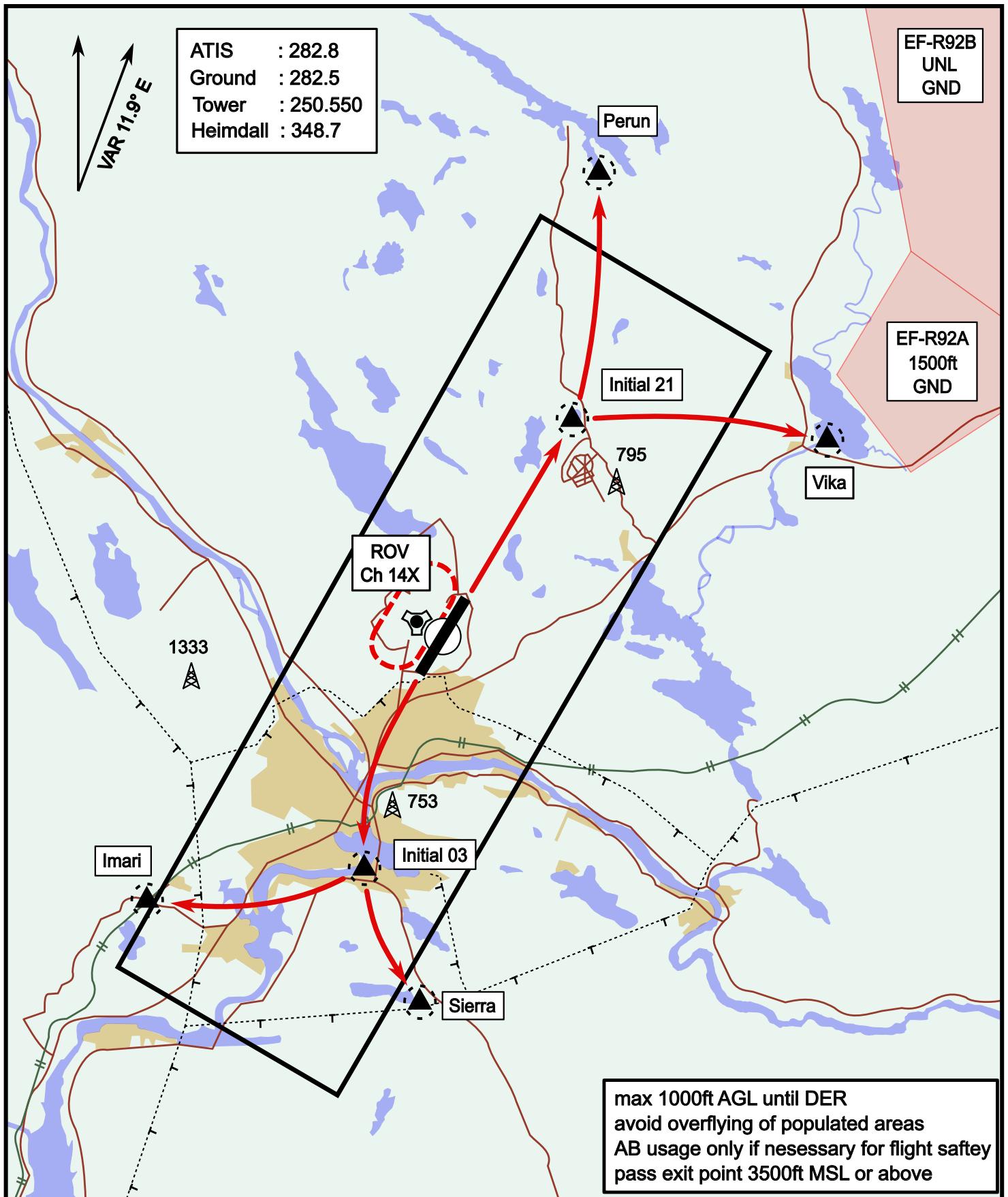
ATIS	Ground	Tower	Radar
282.800	282.500	250.550	348.700



# Visual Departure Jet

elev 643 ft

# Rovaniemi, Finland

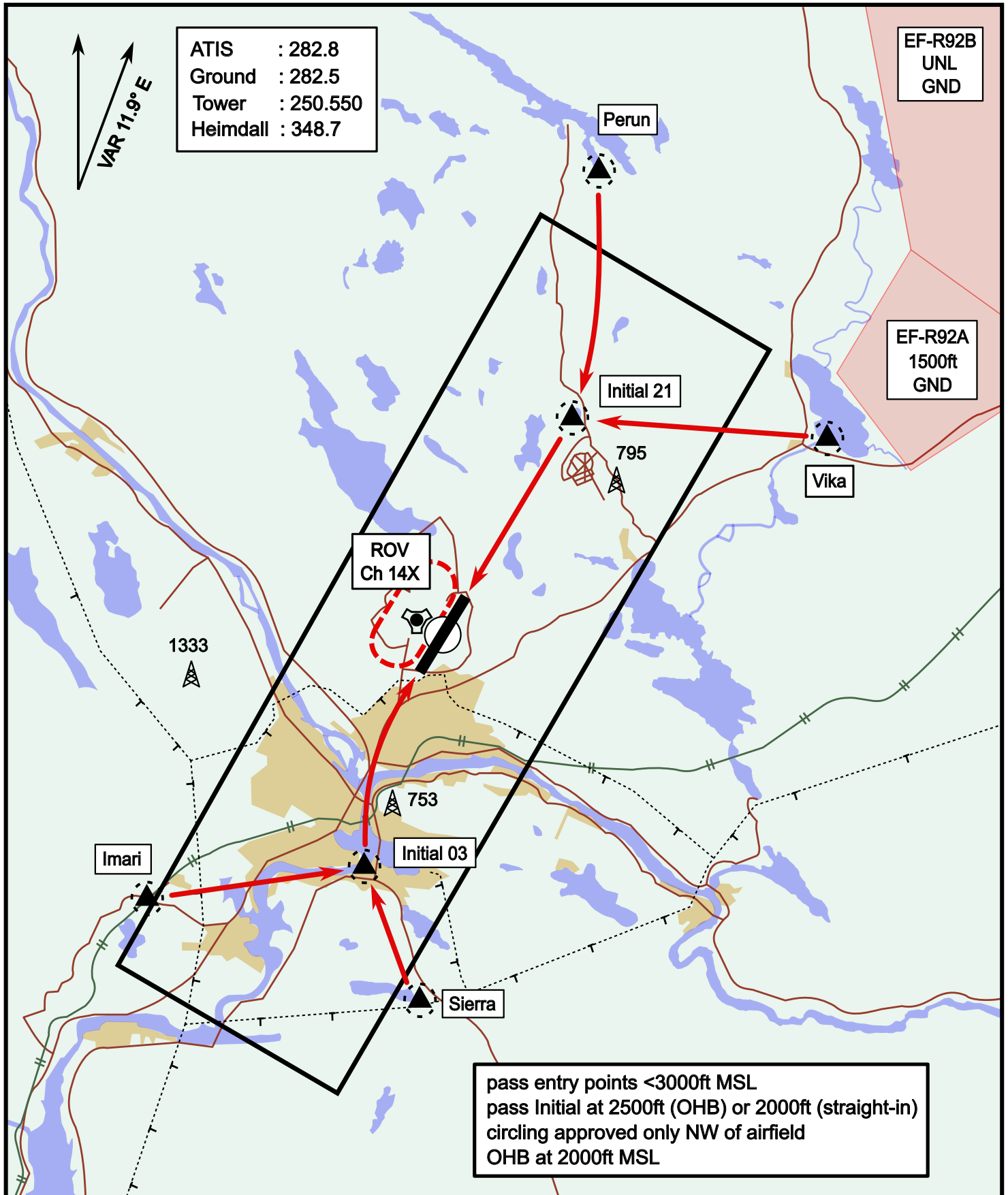


Vika	N66° 37.474 / E026° 13.557	Sierra	N66° 25.711 / E025° 46.610
Perun	N66° 44.135 / E026° 01.630	Imari	N66° 28.406 / E025° 31.291
Initial21	N66° 38.421 / E025° 58.682	Initial03	N66° 28.793 / E025° 44.105

# Visual Approach Jet

elev 643 ft

# Rovaniemi, Finland



Vika	N66° 37.474 / E026° 13.557	Sierra	N66° 25.711 / E025° 46.610
Perun	N66° 44.135 / E026° 01.630	Imari	N66° 28.406 / E025° 31.291
Initial21	N66° 38.421 / E025° 58.682	Initial03	N66° 28.793 / E025° 44.105

**NOT AVAILABLE**

**NOT AVAILABLE**