

MISSION DATA CARD

OPORD		Callsign		Mission		Date/Time		
4042/2025		Raptor 1		Training		012000SEP25		
Task	CAP						Freq	
AO	North of ROV						134.0	
Departure				Recovery				
VFR Departure				VFR Approach				
#	Callsign		Pilot		IFF	TCN	LSR	NET
-1	Raptor 1-1		Jinx		1611	1Y	1621	
-2	Raptor 1-2		Meteor		1612	64Y	1622	

LOADOUT

A/A						GUN	
A/G						CHF	
POD						FLR	
TKS						FUEL	

TOLD

	Takeoff	Target	Joker	Bingo	Land
FUEL	7163				

AIRBASES

	Name	TCN	ATIS	GND	TWR	RWY	Elev	ILS
Dep	Rovaniemi	14X	282.8	282.5	250.55	21	643	111.7
Arr	Rovaniemi	14X	282.8	282.5	250.55	21	643	111.7

FLIGHTPLAN

#	Name	Navaid/Coords/DME	ALT	TOT
1	IMARI	N66 28.406 E025 31.291	3500	
2	PERUN	N66 44.135 E026 01.630	3500	
3	IBSAN	N66 42.500 E025 01.083	25000	
4	CAP Sierra	N67 54.057 E027 15.544	30000	

SUPPORT**Tanker**

Callsign	TCN	Freq	ALT	TAS
ARCO 1	22Y	319.8		
	Pos			

AWACS

Callsign	Freq	ALT	Pos
HEIMDALL	348.7		

OTHER FLIGHTS

Callsign	Mission	Airframe	Freq	TCN	Grpld	Laser
Panther 1	Training	4x F/A-18C	261.35	1/64		157X
AO	ENR06	Task	Anti Ship			
Falcon 1	Training	2x F-16C	134.25	1/64		170X
AO	North of ROV	Task	CAP			
Tiger 1	Training	4x F/A-18C	261.15	1/64	1	155X
AO		Task				
Rattler 5	Training	4x AH-64D	133.5	1/64		125X
AO		Task				
Monster 4	Training	4x A-10C	132.15	1/64	24	161X
AO		Task				
Panther 7	Training	4x F/A-18C	261.45	1/64		157X
AO	ENR06	Task	Anti Ship			
Nazgul 6	Training	4x F-15E	262.45	1/64		156X
AO		Task	Fam Flight			

RADIO CHANNELS

#	Freq	Name
1		Flight/Squadron specific
2	282.8	Rovaniemi ATIS
3	282.5	Rovaniemi Ground
4	250.55	Rovaniemi Tower
5	320.7	Bodo ATIS
6	250.75	Bodo Tower
7	235.45	Kallax ATIS
8	250.3	Kallax Tower
9	265.0	Texaco-1 KC-135 Medium / Slow 71Y
10	319.8	Arco-1 KC-135 High / Fast 22Y
11	360.8	Shell-1 KC-135 MPRS High / Fast 41Y
12	304.0	CVN-71 Rough Rider (RRR) 71X
13	303.0	LHA-1 Tarawa (TWA) 79X
14	247.8	S-3B Mauler-1 (MAU) 64Y
15	347.8	Loki (E-2D)
16	348.7	Heimdall (E-3A)
17	242.17	ESR02 - CAS Range Operator
18	34.7	ESR02 - JTAC Odin
19	270.5	Blue
20	270.75	Red

RAMROD

0	1	2	3	4	5	6	7	8	9
M	U	D	S	L	I	N	G	E	R

KTC 1400 C

	0	1	2	3	4	5	6	7	8	9
A	XIJV	YWG	RLD	BC	ET	ASU	QN	PH	FO	KM
B	HWQI	PST	YXO	CV	RB	GFE	AJ	DU	KM	NL
C	NAFQ	DEG	LWV	OC	JU	XMP	YK	TS	IR	HB
D	STRQ	MWY	OUA	XD	IL	NVK	GE	PH	CF	BJ
E	HGNX	FRY	LSM	AT	CU	DBQ	WI	JO	EK	PV
F	LPCU	SKF	ARM	DX	WB	OTV	EY	QH	NG	IJ
G	WJBV	YUH	STI	FD	OG	QXE	LC	AR	PM	NK
H	PYDE	WUM	IBC	QK	JX	VRA	LS	GT	OH	NF
I	CSFE	JDV	LPY	IW	QK	XMU	RN	OG	AB	HT
J	XTOK	MSE	FQN	CD	YI	WGA	HJ	BV	PU	LR
K	KTIY	LVX	SCF	OB	JQ	GMW	UH	DN	AR	EP
L	KWLO	SAH	GBT	CY	IR	MUV	JD	QE	XP	NF
M	DIKR	HXL	WJY	QU	EB	TOM	GF	NV	AP	SC
N	NUHO	AYL	CQK	RI	JW	PGF	MD	EV	TX	BS
O	FVDM	WGA	UBC	IL	OX	TSY	PJ	RQ	EH	NK
P	CVSD	JYW	RGN	AQ	PB	EUX	FO	TI	HK	LM
Q	QUKP	FCT	HAN	BS	WJ	MGY	IL	VE	DO	RX
R	CWQL	GER	JSY	BT	UF	MAX	NP	DH	VO	KI
S	LABP	MUJ	WDH	VN	IK	RYQ	TF	EX	CS	GO
T	JIBK	FHP	VLT	NO	WQ	REY	AS	UC	XM	DG
U	UOLE	HQN	VBC	KX	RA	PGF	SM	YT	JD	IW
V	IDNE	XLT	MYB	RW	CJ	AOP	VG	UQ	SK	HF
W	JWCT	PYX	VUO	SL	RH	AEK	MB	IQ	GF	ND
X	SADO	TKN	FLJ	YU	VR	MBX	PC	EW	QH	IG
Y	KNAI	FGJ	PQS	CM	UX	BYW	VE	TL	HD	OR

NAVAIDS

Id	Name	Channel	Position	Elevation
BOO	Bodo	45	N67 15.838 E014 20.046	43
BNK	Banak	47	N70 03.937 E024 58.181	17
OYA	Andoya	28	N69 17.175 E016 08.658	19

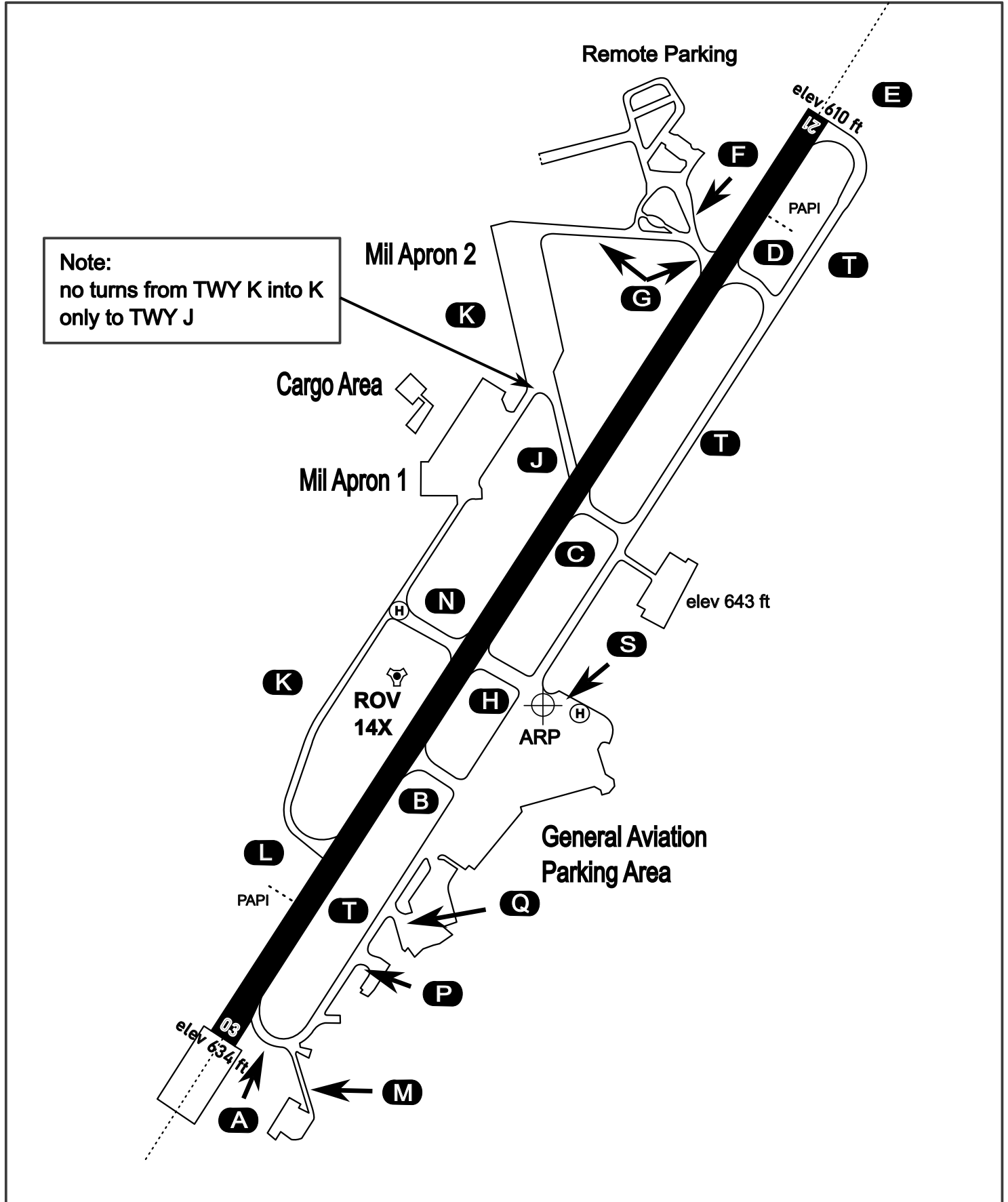
AERODROME CHART

Rovaniemi Aerodrome

ARP N66° 33' 42" E025° 49' 51"

elev 643 ft

ROVANIEMI, FINLAND

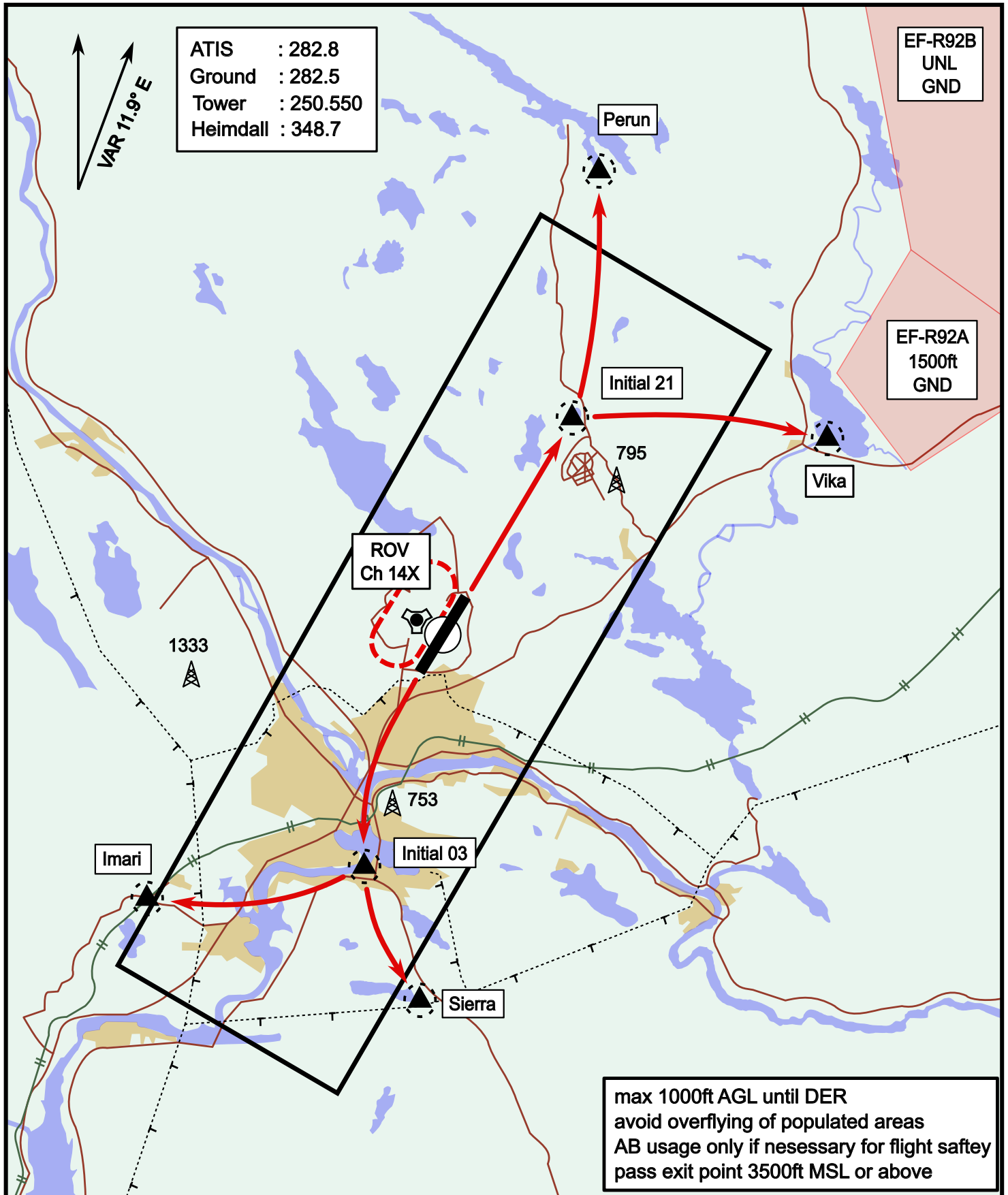


ATIS	Ground	Tower	Radar
282.800	282.500	250.550	348.700

Visual Departure Jet

elev 643 ft

Rovaniemi, Finland



Vika	N66° 37.474 / E026° 13.557	Sierra	N66° 25.711 / E025° 46.610
Perun	N66° 44.135 / E026° 01.630	Imari	N66° 28.406 / E025° 31.291
Initial21	N66° 38.421 / E025° 58.682	Initial03	N66° 28.793 / E025° 44.105

Visual Approach Jet

elev 643 ft

Rovaniemi, Finland



Vika	N66° 37.474 / E026° 13.557	Sierra	N66° 25.711 / E025° 46.610
Perun	N66° 44.135 / E026° 01.630	Imari	N66° 28.406 / E025° 31.291
Initial21	N66° 38.421 / E025° 58.682	Initial03	N66° 28.793 / E025° 44.105