

MISSION DATA CARD

OPORD		Callsign		Mission		Date/Time		
4041/2025		Tiger 1		Training		292010AUG25		
Task						Freq		
AO						133.5		
Departure				Recovery				
VFR Departure				VFR Approach				
#	Callsign		Pilot		IFF	TCN	LSR	NET
-1	Tiger 1-1		Jemi		4611	1Y	1251	

LOADOUT

A/A						GUN	
A/G						CHF	
POD						FLR	
TKS						FUEL	

TOLD

	Takeoff	Target	Joker	Bingo	Land
FUEL	10803				

AIRBASES

	Name	TCN	ATIS	GND	TWR	RWY	Elev	ILS
Dep	Rovaniemi	14X	282.8	282.5	250.55	21	643	111.7
Arr	Rovaniemi	14X	282.8	282.5	250.55	21	643	111.7

FLIGHTPLAN

#	Name	Navaid/Coords/DME	ALT	TOT
1	RVNInit21	N66 38.642 E025 58.682	0	
2	PERUN	N66 44.135 E026 01.630	0	
3	VIKA	N66 37.474 E026 13.557	0	
4	RVNInit03	N66 28.793 E025 44.105	0	
5	IMARI	N66 28.406 E025 31.291	0	
6	SIERRA	N66 25.711 E025 46.610	0	

RADIO CHANNELS

#	Freq	Name
1		Flight/Squadron specific
2	282.8	Rovaniemi ATIS
3	282.5	Rovaniemi Ground
4	250.55	Rovaniemi Tower
5	320.7	Bodo ATIS
6	250.75	Bodo Tower
7	235.45	Kallax ATIS
8	250.3	Kallax Tower
9	265.0	Texaco-1 KC-135 Medium / Slow 71Y
10	319.8	Arco-1 KC-135 High / Fast 22Y
11	360.8	Shell-1 KC-135 MPRS High / Fast 41Y
12	304.0	CVN-71 Rough Rider (RRR) 71X
13	303.0	LHA-1 Tarawa (TWA) 79X
14	247.8	S-3B Mauler-1 (MAU) 64Y
15	347.8	Loki (E-2D)
16	348.7	Heimdall (E-3A)
17	242.17	ESR02 - CAS Range Operator
18	34.7	ESR02 - JTAC Odin
19	270.5	Blue
20	270.75	Red

RAMROD

0	1	2	3	4	5	6	7	8	9
C	Y	B	E	R	P	U	N	K	S

KTC 1400 C

	0	1	2	3	4	5	6	7	8	9
A	RXJE	OAF	WBL	CG	SU	PKY	QI	DN	VM	HT
B	AXGP	OUV	FTD	CS	ML	YHW	KJ	QE	IB	RN
C	FCYM	KXN	TRW	UB	PI	DEH	SQ	LA	GJ	OV
D	AQCN	KTX	FDO	WR	JE	GHP	MY	IV	SB	LU
E	UTWO	HAB	JKY	GN	SD	MRV	IQ	CX	LP	FE
F	LUPE	DMS	KFH	TJ	IA	WCN	BR	GY	OQ	XV
G	IEOB	NWC	HKV	UG	QS	PXM	RL	JD	TA	FY
H	HCFN	GWI	MAL	BX	QK	YES	RT	PO	UJ	DV
I	WVUN	JQF	SIE	HC	KD	YOG	RP	AB	TX	ML
J	JOKF	GLU	DVE	HR	SP	CTN	XI	WQ	MB	YA
K	VCMD	TWJ	LXA	SQ	HU	FNE	KY	GB	RP	OI
L	MCQT	VGD	KLJ	NF	XO	EHU	IR	BY	SP	WA
M	IOXK	YEB	JPU	DG	HS	QAN	CR	FL	TV	WM
N	TSHU	YBQ	VCG	FK	IX	WPJ	RN	OA	EM	LD
O	KYNE	RGS	AUJ	LQ	CF	MHB	OV	WT	DP	IX
P	HQJC	VNS	LFY	KP	GU	XRB	IA	ET	OM	DW
Q	NMGS	EFP	DRW	BJ	CQ	KIV	TO	XA	LH	UY
R	JDPW	EHL	VBM	QY	GT	SUN	OC	XR	KI	AF
S	XSRC	NQJ	UFV	BD	MP	THW	AO	LE	KG	YI
T	PRQD	CAV	XIN	GO	JB	LYT	HF	MK	SW	UE
U	XJRQ	HON	SKY	VF	CU	DWT	PG	LA	IB	ME
V	PYCL	TUE	XIJ	OG	SN	AQD	FH	WB	MR	KV
W	IBYR	GQW	NDK	FS	PE	XHA	CO	LM	VT	JU
X	EPLN	OUA	QDW	BG	IF	JCY	XV	KT	RS	MH
Y	PRVM	AUW	BIF	KQ	OJ	GYE	CS	XN	LT	DH

NAVAIDS

Id	Name	Channel	Position	Elevation
BOO	Bodo	45	N67 15.838 E014 20.046	43
BNK	Banak	47	N70 03.937 E024 58.181	17
OYA	Andoya	28	N69 17.175 E016 08.658	19

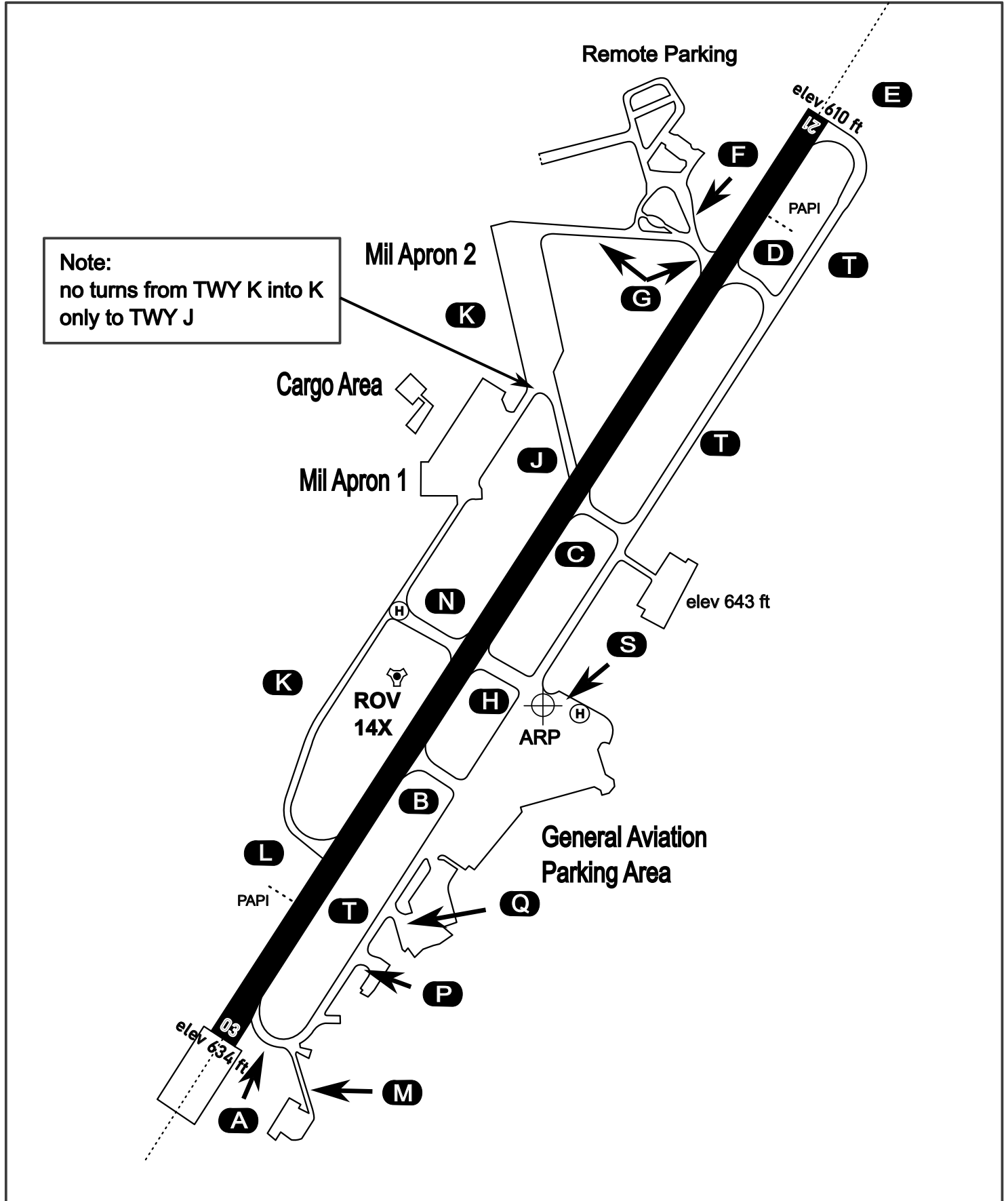
AERODROME CHART

Rovaniemi Aerodrome

ARP N66° 33' 42" E025° 49' 51"

elev 643 ft

ROVANIEMI, FINLAND

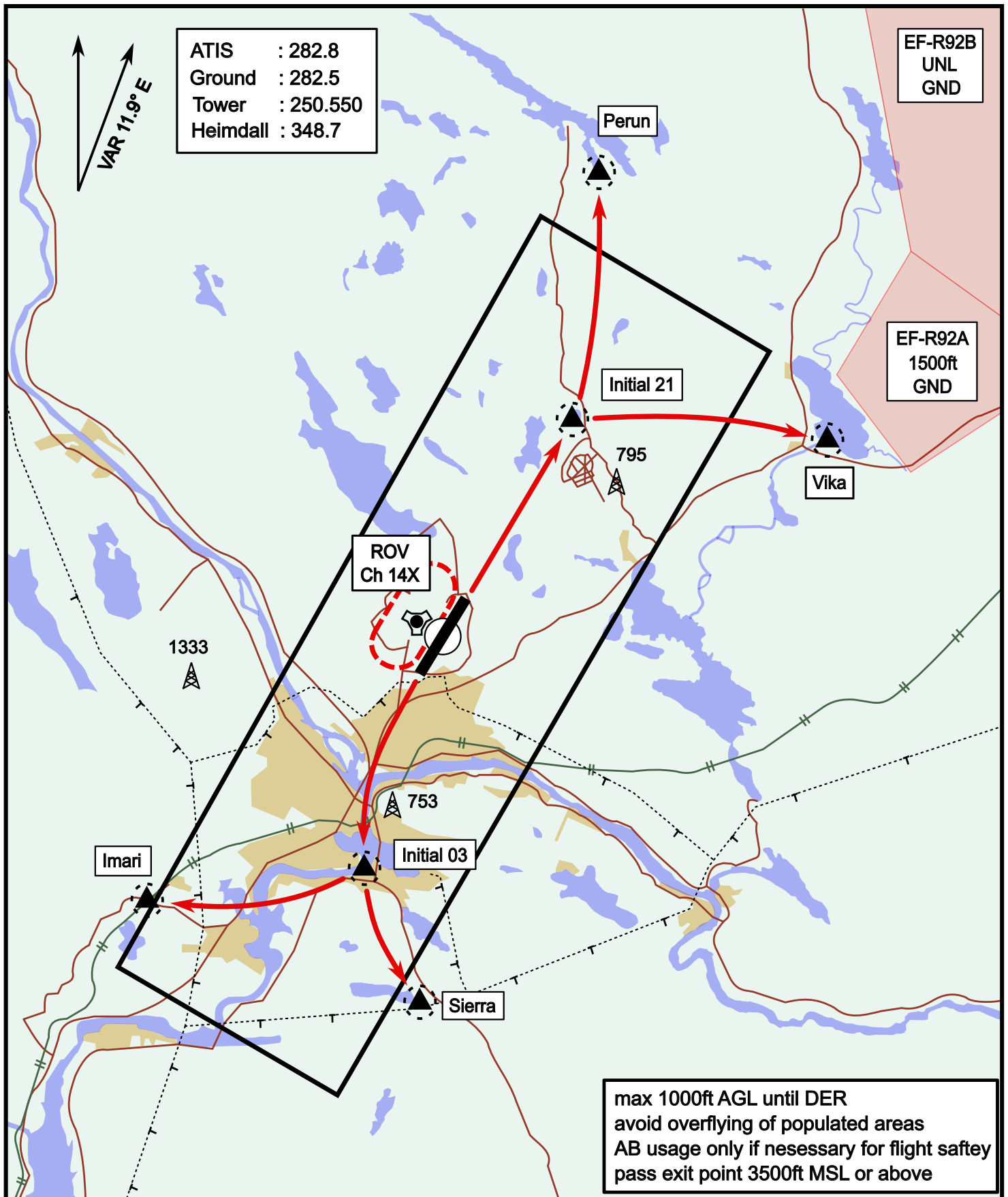


ATIS	Ground	Tower	Radar
282.800	282.500	250.550	348.700

Visual Departure Jet

elev 643 ft

Rovaniemi, Finland

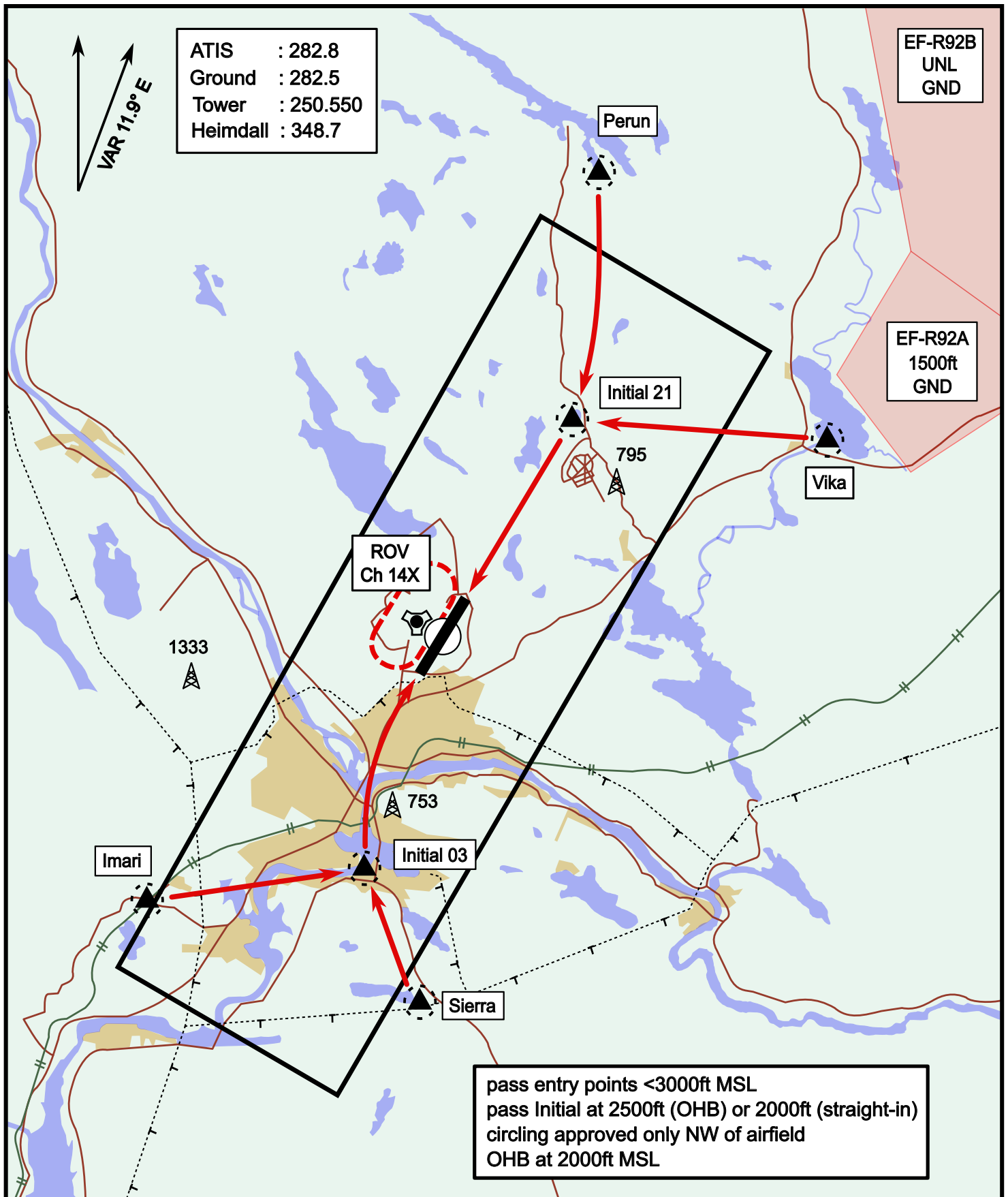


Vika	N66° 37.474 / E026° 13.557	Sierra	N66° 25.711 / E025° 46.610
Perun	N66° 44.135 / E026° 01.630	Imari	N66° 28.406 / E025° 31.291
Initial21	N66° 38.421 / E025° 58.682	Initial03	N66° 28.793 / E025° 44.105

Visual Approach Jet

elev 643 ft

Rovaniemi, Finland



Vika	N66° 37.474 / E026° 13.557	Sierra	N66° 25.711 / E025° 46.610
Perun	N66° 44.135 / E026° 01.630	Imari	N66° 28.406 / E025° 31.291
Initial21	N66° 38.421 / E025° 58.682	Initial03	N66° 28.793 / E025° 44.105