

MISSION DATA CARD

OPORD		Callsign		Mission		Date/Time	
4019/2025		Nazgul 6		Training		032000AUG25	
Task	Fam Flight					Freq	
AO						262.45	
Departure				Recovery			
VFR Depature				VFR Approach			
#	Callsign	Pilot	IFF	TCN	LSR	NET	
-1	Nazgul 6-1	Striver/UTA	1161	1Y	1561		
-2	Nazgul 6-2	Xtern1/Razorback	1162	64Y	1562		
-3	Nazgul 6-3	Tank	1163	64X	1563		

LOADOUT

A/A	2xA120C, 2xA9M			GUN	100% SAPHEI
A/G				CHF	120
POD	TGT, NAV			FLR	60
TKS	2xFT610			FUEL	100%

TOLD

	Takeoff	Target	Joker	Bingo	Land
FUEL	30518				

AIRBASES

	Name	TCN	ATIS	GND	TWR	RWY	Elev	ILS
Dep	Rovaniemi	14X	282.8	282.5	250.55	21	643	111.7
Arr	Rovaniemi	14X	282.8	282.5	250.55	21	643	111.7

FLIGHTPLAN

#	Name	Navaid/Coords/DME	ALT	TOT
1	RVNInit21	N66 38.642 E025 58.682	1500	
2	PERUN	N66 44.135 E026 01.630	2500	
3	AR.TEXACO1	N67 17.265 E025 14.164	20000	
4	AR.ARCO1	N67 43.144 E024 17.962	20000	
5	IMARI	N66 28.406 E025 31.291	2500	
6	RVNInit03	N66 28.793 E025 44.105	2500	

SUPPORT**Tanker**

Callsign	TCN	Freq	ALT	TAS
TEXACO 1	71Y	265.0		
	Pos			
ARCO 1	22Y	319.8		
	Pos			

OTHER FLIGHTS

Callsign	Mission	Airframe	Freq	TCN	GrpId	Laser
Falcon 1	Training	4x F-16C	134.25	1/64		170X
AO		Task				

RADIO CHANNELS

#	Freq	Name
1		Flight/Squadron specific
2	282.8	Rovaniemi ATIS
3	282.5	Rovaniemi Ground
4	250.55	Rovaniemi Tower
5	320.7	Bodo ATIS
6	250.75	Bodo Tower
7	235.45	Kallax ATIS
8	250.3	Kallax Tower
9	265.0	Texaco-1 KC-135 Medium / Slow 71Y
10	319.8	Arco-1 KC-135 High / Fast 22Y
11	360.8	Shell-1 KC-135 MPRS High / Fast 41Y
12	304.0	CVN-71 Rough Rider (RRR) 71X
13	303.0	LHA-1 Tarawa (TWA) 79X
14	247.8	S-3B Mauler-1 (MAU) 64Y
15	347.8	Loki (E-2D)
16	348.7	Heimdall (E-3A)
17	242.17	ESR02 - CAS Range Operator
18	34.7	ESR02 - JTAC Odin
19	270.5	Blue
20	270.75	Red

RAMROD

0	1	2	3	4	5	6	7	8	9
S	C	R	A	M	B	L	I	N	G

KTC 1400 C

	0	1	2	3	4	5	6	7	8	9
A	LTCW	MNF	EGR	HK	DY	PSA	VO	XB	UJ	QI
B	LKOB	SNQ	PJF	WE	HU	GRV	CX	IY	TD	AM
C	BEYJ	QMH	ALS	UR	KG	WPC	TV	IX	ND	FO
D	MWGC	JSB	VUT	KN	DR	YAF	XQ	HL	OE	PI
E	NYRV	CUB	WAM	ST	XP	OQF	LJ	HG	IE	KD
F	FDSO	VAJ	GEP	QW	CR	YHN	XB	KL	MT	UI
G	APFU	EBH	XJK	NO	RQ	CYS	TV	DW	GI	ML
H	DXFH	JSU	RTW	PM	OQ	LIG	CY	NE	AV	KB
I	ODHX	WBG	NSI	AV	FC	EPK	TJ	LY	UR	MQ
J	XAFO	PYC	WKS	BL	MD	RUQ	NT	IH	EJ	GV
K	PIJS	XTM	CER	YO	QL	HWU	FV	DN	KG	BA
L	DRGN	FEV	HJQ	OA	US	MBY	XC	LT	KW	PI
M	FHQK	ATE	GJO	VD	RS	IWY	NL	UP	BX	CM
N	WUFJ	MYC	SRO	XB	VI	GQN	DT	PH	AE	LK
O	ROLB	KAE	WNI	YV	FS	PQG	MX	HJ	CD	TU
P	DRIX	VJO	BTE	SY	HU	CGK	WF	QN	PM	AL
Q	RNSI	EYK	UGT	QO	CA	LXH	VB	FD	JM	WP
R	NBQM	FTP	LVJ	DH	CS	GUK	RO	EY	WA	XI
S	PIFW	QJH	RCU	TA	VN	SKY	EX	MB	DL	GO
T	POCH	IVL	RFT	SG	JX	KAN	YU	DB	MW	QE
U	PLHC	RMO	JBT	VE	XI	UDQ	GW	AY	NS	FK
V	ALQO	TSU	DMX	JG	HV	IRY	FB	WN	CK	EP
W	KDCW	SLP	EVR	OF	YI	HUN	AT	XB	GJ	MQ
X	JPAR	XNO	IML	DT	GU	VBE	QS	CH	FK	YW
Y	MKJB	DTU	XHL	SR	IC	OWY	NE	VF	QA	GP

NAVAIDS

Id	Name	Channel	Position	Elevation
BOO	Bodo	45	N67 15.838 E014 20.046	43
BNK	Banak	47	N70 03.937 E024 58.181	17
OYA	Andoya	28	N69 17.175 E016 08.658	19

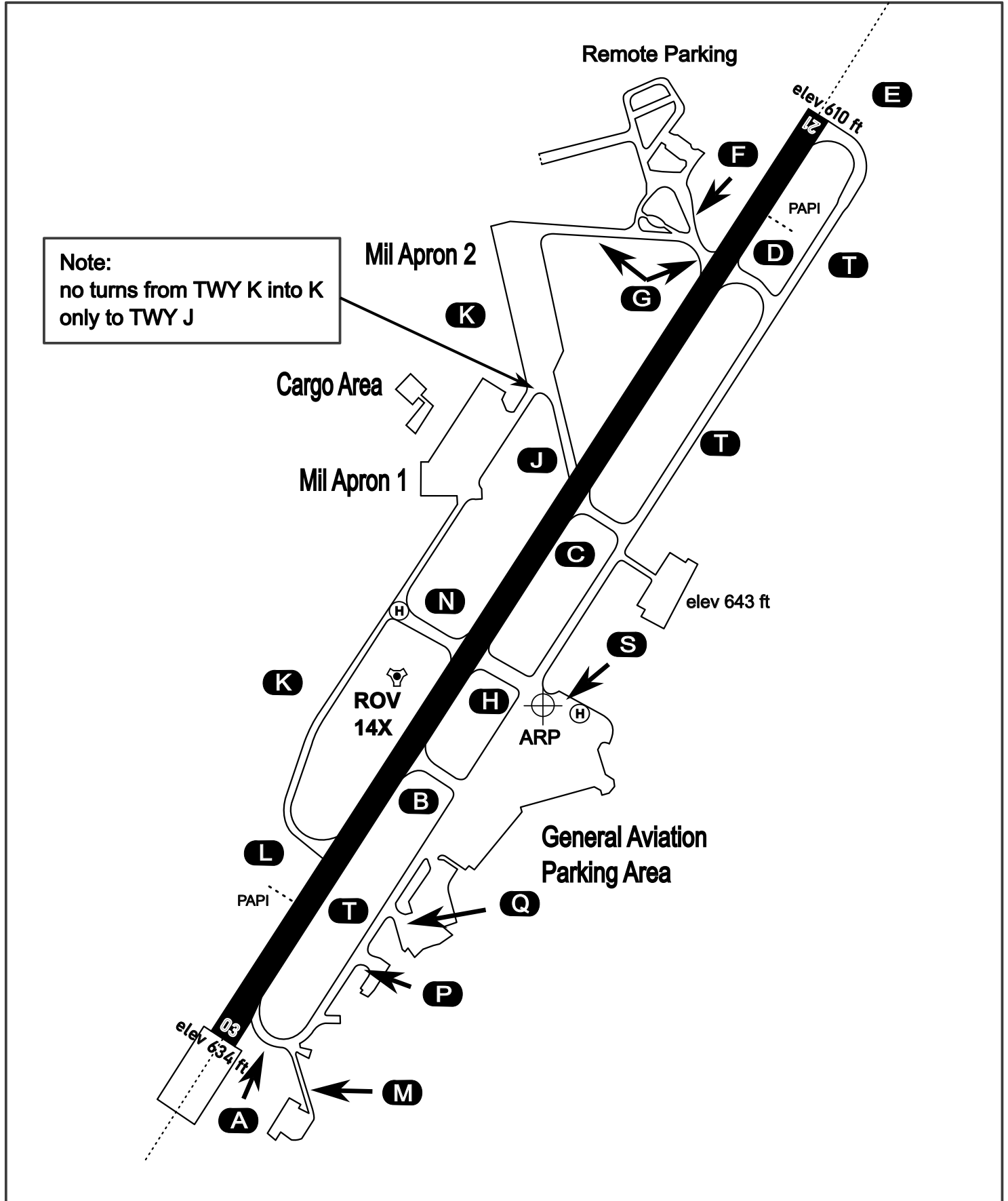
AERODROME CHART

Rovaniemi Aerodrome

ARP N66° 33' 42" E025° 49' 51"

elev 643 ft

ROVANIEMI, FINLAND

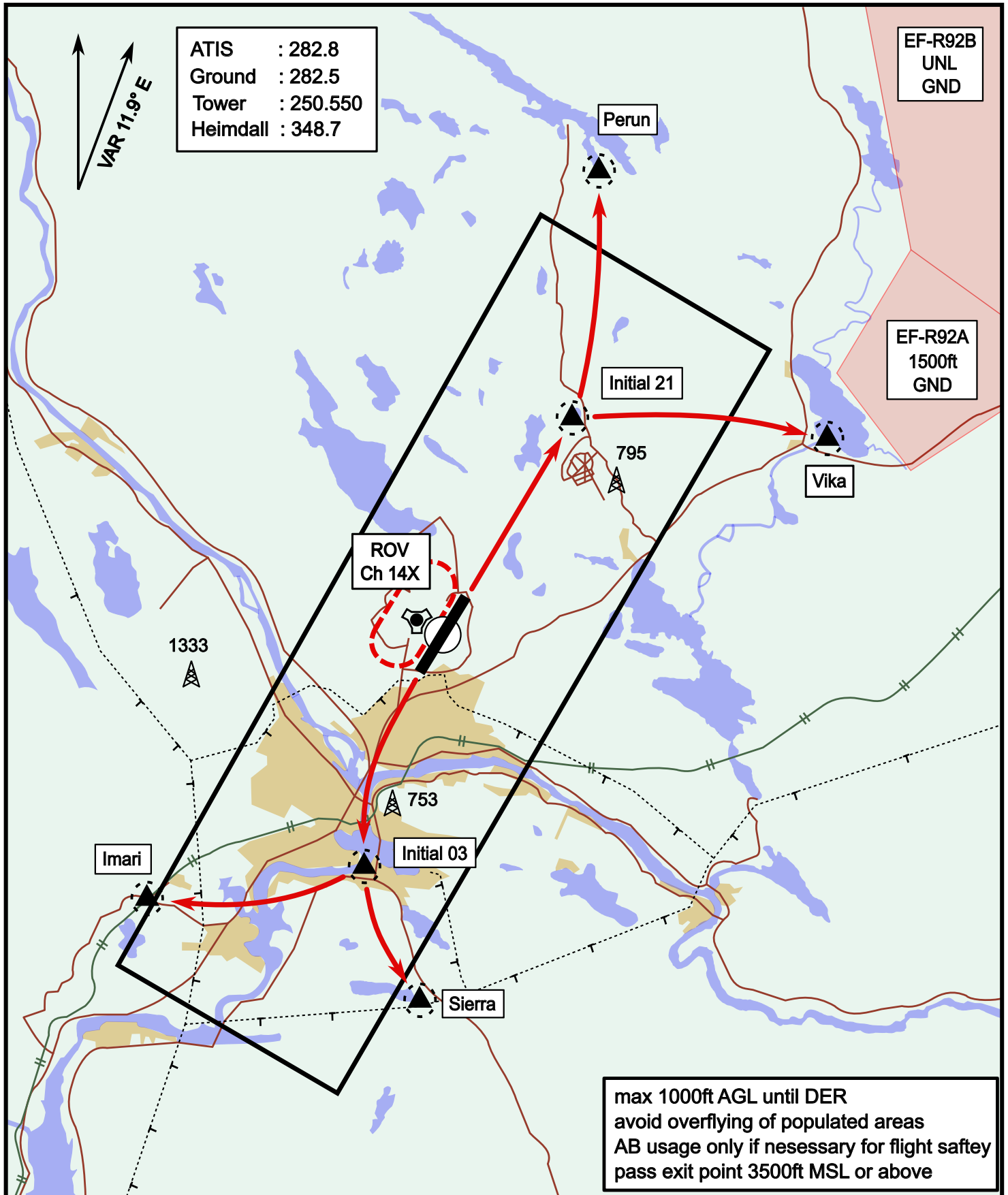


ATIS	Ground	Tower	Radar
282.800	282.500	250.550	348.700

Visual Departure Jet

elev 643 ft

Rovaniemi, Finland



ATIS : 282.8
 Ground : 282.5
 Tower : 250.550
 Heimdall : 348.7

EF-R92B
 UNL
 GND

EF-R92A
 1500ft
 GND

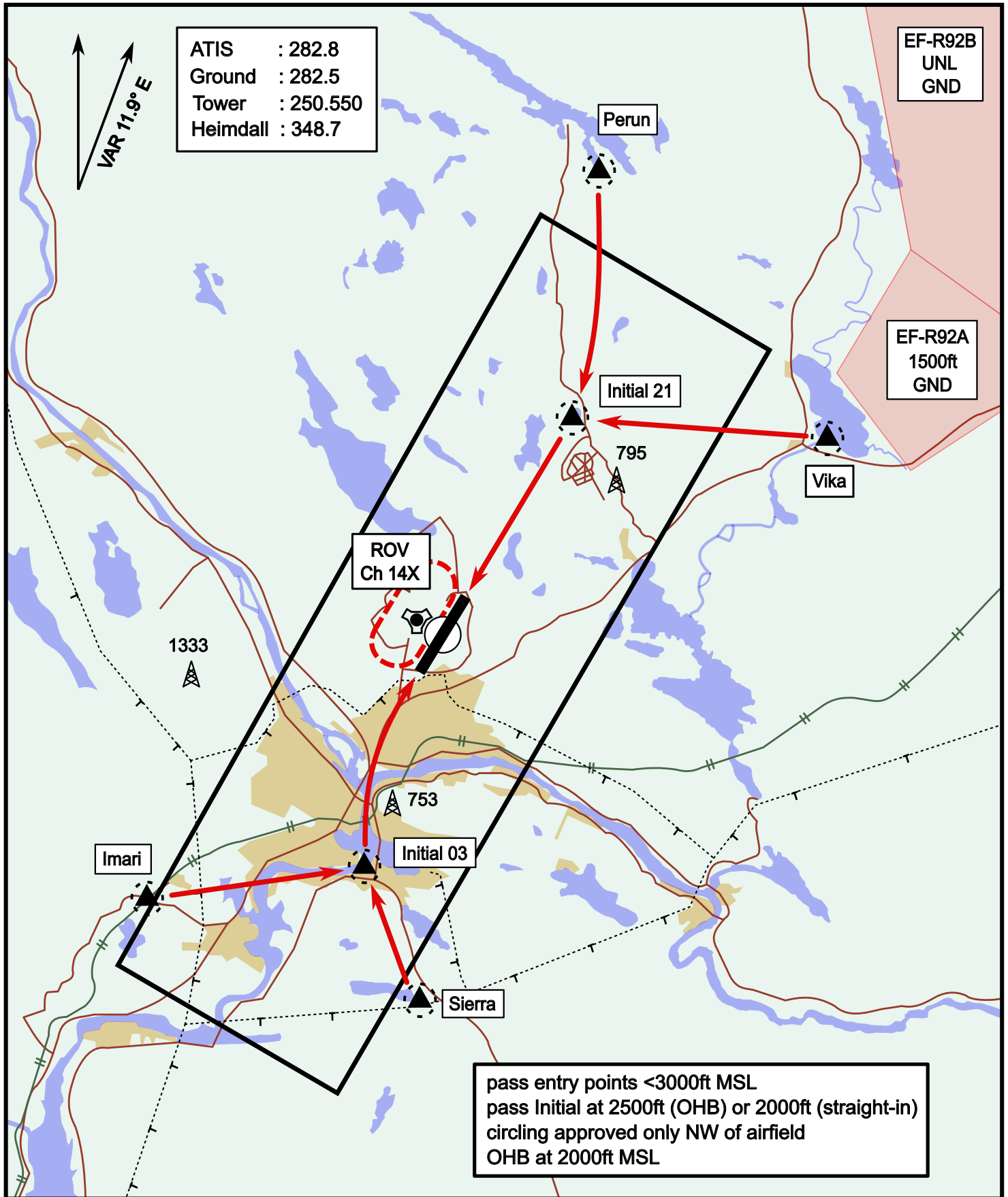
max 1000ft AGL until DER
 avoid overflying of populated areas
 AB usage only if necessary for flight safety
 pass exit point 3500ft MSL or above

Vika	N66° 37.474 / E026° 13.557	Sierra	N66° 25.711 / E025° 46.610
Perun	N66° 44.135 / E026° 01.630	Imari	N66° 28.406 / E025° 31.291
Initial21	N66° 38.421 / E025° 58.682	Initial03	N66° 28.793 / E025° 44.105

Visual Approach Jet

elev 643 ft

Rovaniemi, Finland



Vika	N66° 37.474 / E026° 13.557	Sierra	N66° 25.711 / E025° 46.610
Perun	N66° 44.135 / E026° 01.630	Imari	N66° 28.406 / E025° 31.291
Initial21	N66° 38.421 / E025° 58.682	Initial03	N66° 28.793 / E025° 44.105