

MISSION DATA CARD

OPORD		Callsign		Mission		Date/Time		
4016/2025		Edelweiss 1		Training		312130JUL25		
Task	AAR Training					Freq		
AO						264.15		
Departure				Recovery				
VFR Depature				ILS RWY 21				
#	Callsign		Pilot		IFF	TCN	LSR	NET
-1	Edelweiss 1-1		Ulukaii		1711	1Y	1711	

LOADOUT

A/A						GUN	
A/G						CHF	
POD						FLR	
TKS						FUEL	

TOLD

	Takeoff	Target	Joker	Bingo	Land
FUEL	10803				

AIRBASES

	Name	TCN	ATIS	GND	TWR	RWY	Elev	ILS
Dep	Rovaniemi	14X	282.8	282.5	250.55	21	643	111.7
Arr	Rovaniemi	14X	282.8	282.5	250.55	21	643	111.7

FLIGHTPLAN

#	Name	Navaid/Coords/DME	ALT	TOT
1	IMARI	N66 28.500 E025 30.975		
2	ibsan	N66 42.996 E025	15000	
3	AR SHELL 1	N67 26.885 E024 34.823	20000	
4	PERUN	N66 44.135 E026 01.630	15000	

SUPPORT**Tanker**

Callsign	TCN	Freq	ALT	TAS
TEXACO 1	71Y	265.0		
	Pos			
ARCO 1	22Y	319.8		
	Pos			
SHELL 1	41Y	360.8		
	Pos			

AWACS

Callsign	Freq	ALT	Pos
HEIMDALL	348.7		
LOKI	347.8		

OTHER FLIGHTS

Callsign	Mission	Airframe	Freq	TCN	Grpld	Laser
Falcon 1	Training	4x F-16C	134.25	1/64		170X
	AO		Task			
Jedi* 1	Training	1x F-4E	264.05	1/64		170X
	AO		Task			

RADIO CHANNELS

#	Freq	Name
1		Flight/Squadron specific
2	282.8	Rovaniemi ATIS
3	282.5	Rovaniemi Ground
4	250.55	Rovaniemi Tower
5	320.7	Bodo ATIS
6	250.75	Bodo Tower
7	235.45	Kallax ATIS
8	250.3	Kallax Tower
9	265.0	Texaco-1 KC-135 Medium / Slow 71Y
10	319.8	Arco-1 KC-135 High / Fast 22Y
11	360.8	Shell-1 KC-135 MPRS High / Fast 41Y
12	304.0	CVN-71 Rough Rider (RRR) 71X
13	303.0	LHA-1 Tarawa (TWA) 79X
14	247.8	S-3B Mauler-1 (MAU) 64Y
15	347.8	Loki (E-2D)
16	348.7	Heimdall (E-3A)
17	242.17	ESR02 - CAS Range Operator
18	34.7	ESR02 - JTAC Odin
19	270.5	Blue
20	270.75	Red

RAMROD

0	1	2	3	4	5	6	7	8	9
R	H	A	P	S	O	D	I	Z	E

KTC 1400 C

	0	1	2	3	4	5	6	7	8	9
A	HYGX	IRD	ETO	CU	QW	MJK	FP	LN	SB	VA
B	KDAV	GEH	FOT	NU	PR	IBM	XJ	WQ	SL	YC
C	FQOV	NJD	UHK	AI	GE	XSW	MY	CL	BP	RT
D	FNBE	TAW	YDU	RV	JH	SPC	GM	OX	KL	QI
E	LEOU	KHW	QFG	AS	PV	YXC	RD	JB	MN	TI
F	XLNQ	JIG	MDR	OT	SC	VHY	KU	AW	BF	EP
G	HJKS	MAY	XPN	BF	GO	CLU	WT	EI	VD	QR
H	EIRJ	XHN	MCB	OQ	TL	PVY	SW	DG	FA	UK
I	DQJW	ULH	Evy	NM	RB	KXP	OS	AC	IF	TG
J	UHBY	LKO	CGP	QX	DN	SAW	EV	TI	MR	FJ
K	HTJM	UFW	CRY	EI	SX	GLK	QN	DA	VB	PO
L	OYJC	AEV	MLG	WQ	SN	KPD	RI	BH	UF	TX
M	DAPU	OVE	NQK	IG	TC	SLF	RX	MH	WY	BJ
N	ADTB	JUX	FYO	LE	RW	PGM	HQ	VC	NI	SK
O	KRNL	CIV	UHS	DJ	AT	OBF	YW	QP	XG	ME
P	CGVR	PBI	OLX	EK	ST	JAQ	FN	HD	UW	YM
Q	HQXJ	SFA	BMG	CE	IP	RWL	DY	TO	UN	KV
R	XGKA	OPU	RBJ	ST	ND	HIL	YV	ME	FQ	WC
S	RNTJ	LQP	SUF	CB	XW	MGH	IY	AO	DE	KV
T	CIUW	MSK	JHR	DX	PA	EFB	VL	TQ	ON	YG
U	XWUN	PIE	CJA	QR	MY	KBH	TL	OF	DV	GS
V	TVCP	JGI	NQR	LU	EW	BYS	HM	XK	AD	OF
W	RHLD	CWV	OBP	JU	GX	KTN	QI	AM	YF	SE
X	PXUW	HCI	DFK	EA	VQ	OTR	NB	SJ	LY	GM
Y	DALJ	PBO	SGW	ET	YR	KXH	NM	UF	IQ	VC

NAVAIDS

Id	Name	Channel	Position	Elevation
BOO	Bodo	45	N67 15.838 E014 20.046	43
BNK	Banak	47	N70 03.937 E024 58.181	17
OYA	Andoya	28	N69 17.175 E016 08.658	19

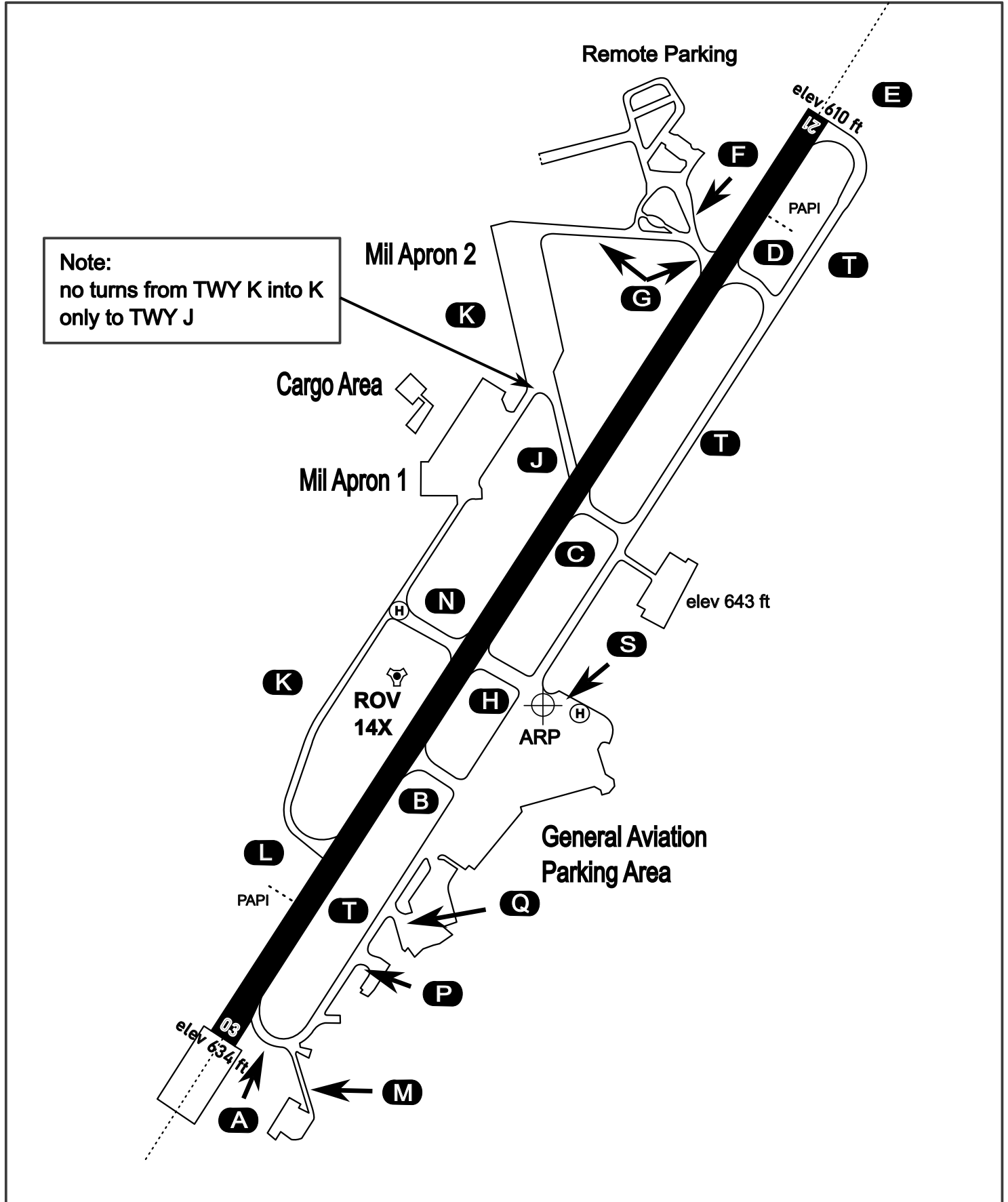
AERODROME CHART

Rovaniemi Aerodrome

ARP N66° 33' 42" E025° 49' 51"

elev 643 ft

ROVANIEMI, FINLAND

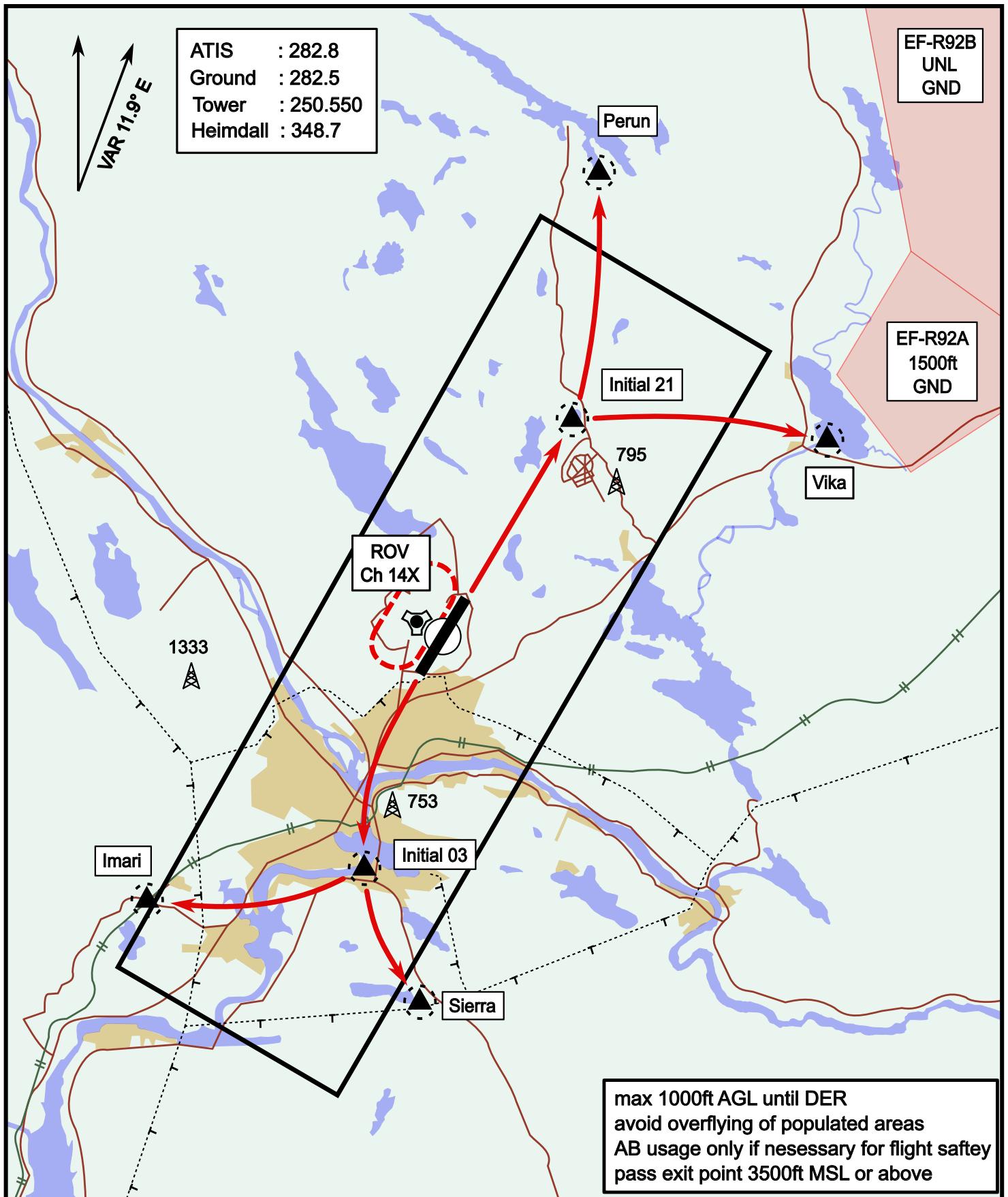


ATIS	Ground	Tower	Radar
282.800	282.500	250.550	348.700

Visual Departure Jet

elev 643 ft

Rovaniemi, Finland



Vika	N66° 37.474 / E026° 13.557	Sierra	N66° 25.711 / E025° 46.610
Perun	N66° 44.135 / E026° 01.630	Imari	N66° 28.406 / E025° 31.291
Initial21	N66° 38.421 / E025° 58.682	Initial03	N66° 28.793 / E025° 44.105

