

**MISSION DATA CARD**

OPORD		Callsign		Mission		Date/Time	
3997/2025		Python* 1		Training		142030JUL25	
Task							Freq
AO							264.55
Departure				Recovery			
SID RWY 03				ILS RWY 21			
#	Callsign	Pilot		IFF	TCN	LSR	NET
-1	Python* 1-1	Herby		1701	1Y	1701	

**LOADOUT**

A/A						GUN	
A/G						CHF	
POD						FLR	
TKS						FUEL	

**TOLD**

	Takeoff	Target	Joker	Bingo	Land
FUEL	7758				

**AIRBASES**

	Name	TCN	ATIS	GND	TWR	RWY	Elev	ILS
Dep	Rovaniemi	14X	282.8	282.5	250.55	21	643	111.7
Arr	Rovaniemi	14X	282.8	282.5	250.55	21	643	111.7
Div	Kittila				250.7	34	644	111.9

**SUPPORT****Tanker**

Callsign	TCN	Freq	ALT	TAS
SHELL 1	41Y	360.8		

Pos

**AWACS**

Callsign	Freq	ALT	Pos
HEIMDALL	348.7		
LOKI	347.8		

**OTHER FLIGHTS**

Callsign	Mission	Airframe	Freq	TCN	Grpld	Laser
Raptor 1	Training	4x F-16C	134.0	1/64		162X
	AO	ESR01	Task	SEAD/DEAD		
Tiger 1	Training	2x F/A-18C	134.0	1/64		155X
	AO		Task			

## RADIO CHANNELS

#	Freq	Name
1		Flight/Squadron specific
2	282.8	Rovaniemi ATIS
3	282.5	Rovaniemi Ground
4	250.55	Rovaniemi Tower
5	320.7	Bodo ATIS
6	250.75	Bodo Tower
7	235.45	Kallax ATIS
8	250.3	Kallax Tower
9	265.0	Texaco-1   KC-135   Medium / Slow   71Y
10	319.8	Arco-1   KC-135   High / Fast   22Y
11	360.8	Shell-1   KC-135 MPRS   High / Fast   41Y
12	304.0	CVN-71 Rough Rider (RRR)   71X
13	303.0	LHA-1 Tarawa (TWA)   79X
14	247.8	S-3B Mauler-1 (MAU)  64Y
15	347.8	Loki (E-2D)
16	348.7	Heimdall (E-3A)
17	242.17	ESR02 - CAS Range Operator
18	34.7	ESR02 - JTAC Odin
19	270.5	Blue
20	270.75	Red

**RAMROD**

0	1	2	3	4	5	6	7	8	9
O	V	E	R	T	A	X	I	N	G

**KTC 1400 C**

	0	1	2	3	4	5	6	7	8	9
A	ESQM	VFX	CTI	GY	WD	NUB	AP	JH	RO	LK
B	NDHU	LIY	BVJ	AO	TR	FSK	WM	CQ	GX	PE
C	DPKJ	AWY	QCT	UI	EG	LFM	RV	BX	HO	NS
D	QYDA	LCO	VER	KU	WF	XSB	TG	JH	IM	NP
E	WOKT	HMI	BDV	PJ	FE	QLN	SA	UR	XY	CG
F	OUFJ	GXV	ENY	KD	SB	RTP	QA	IL	HW	MC
G	MTWC	JPD	BRN	SV	IY	ELQ	OK	GX	UF	AH
H	JYRQ	FSH	PXM	GO	EV	DBC	WN	TL	IK	AU
I	JWFM	LBH	QRT	PS	CA	VOX	YE	IK	GU	ND
J	YNHL	SWA	FOC	RE	TQ	DKB	MX	JP	IG	VU
K	DFWR	HGT	AOL	IC	NX	PBK	JY	SU	MV	QE
L	YPGB	KSA	FTE	RL	NC	VQU	XJ	MI	DO	WH
M	VSON	UEY	PLQ	KT	ID	HRW	JA	BM	GC	XF
N	FHRX	MAE	PCS	QJ	DG	KTY	WB	LI	VO	UN
O	JTQI	SFU	RNV	GK	YO	PEL	MD	XA	CB	HW
P	WDVK	SPC	QYU	BR	JG	EHM	LX	TA	OI	FN
Q	VPNY	HUT	GBQ	XW	DL	KOC	MA	FS	EI	JR
R	SACQ	ELW	HRT	KJ	FO	YDX	BN	VI	GP	UM
S	LPMS	QWA	JOH	EK	VD	IUC	XT	FN	BY	RG
T	KBJT	IWE	MQY	DU	SO	VPH	NA	LF	GC	XR
U	SJPV	CFG	ATD	NK	YI	UHL	BO	QM	RX	WE
V	XCYH	SJW	PTQ	GA	BE	RUD	NI	VL	KF	OM
W	NWYR	PMT	XJV	EA	HS	DCI	UO	BL	GF	KQ
X	CPBM	ILJ	HYS	AT	RN	WOE	VU	XF	KQ	GD
Y	EXNC	KRI	JYA	LP	GB	QFT	UD	WO	MH	VS

**NAVAIDS**

Id	Name	Channel	Position	Elevation
BOO	Bodo	45	N67 15.838 E014 20.046	43
BNK	Banak	47	N70 03.937 E024 58.181	17
OYA	Andoya	28	N69 17.175 E016 08.658	19

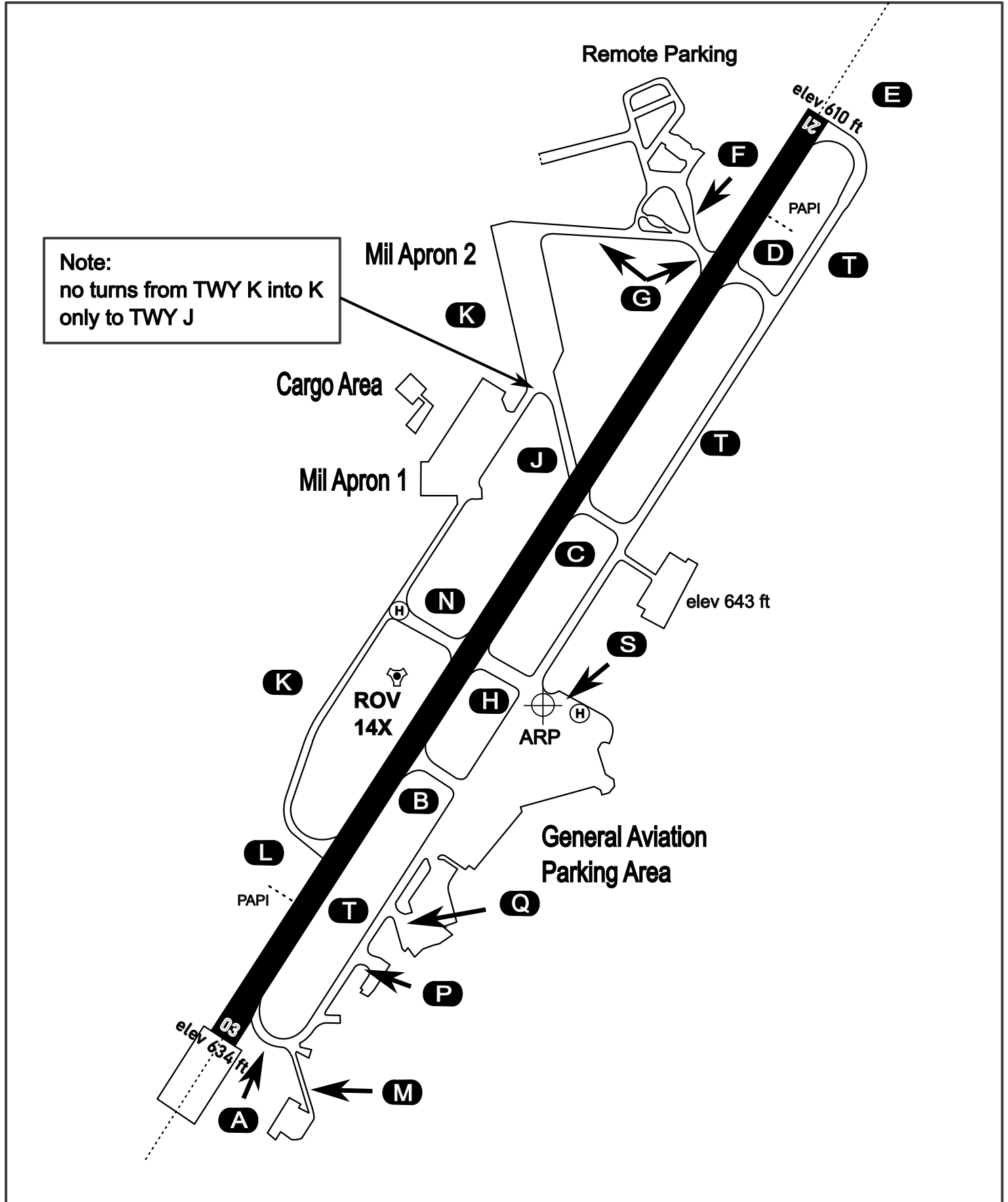
# AERODROME CHART

Rovaniemi Aerodrome

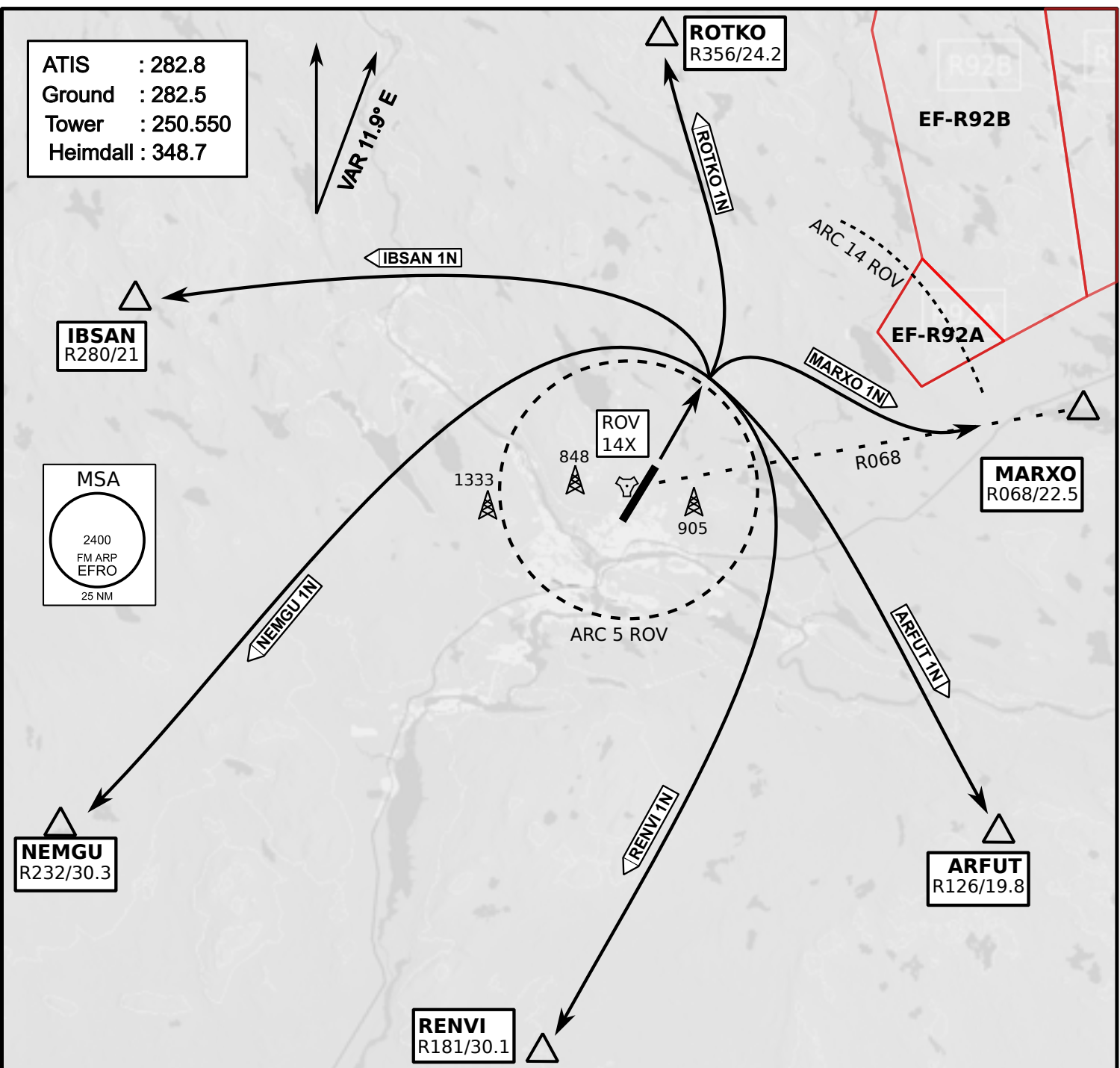
ARP N66° 33' 42" E025° 49' 51"

elev 643 ft

## ROVANIEMI, FINLAND

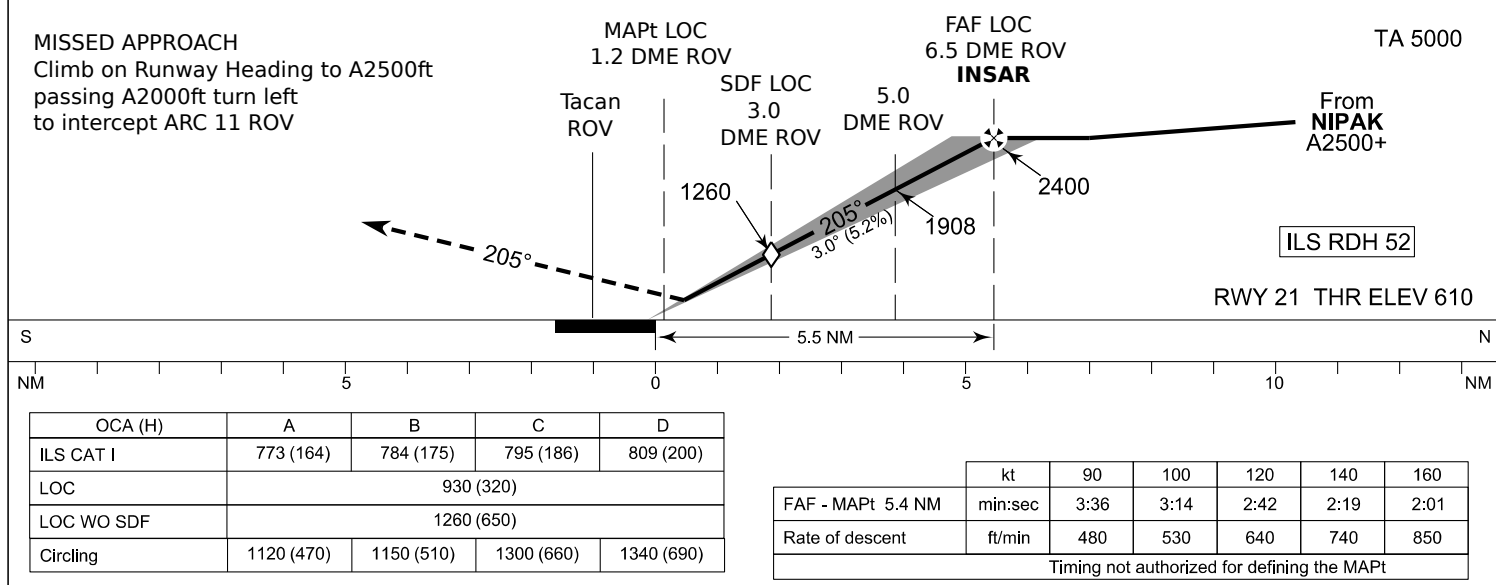
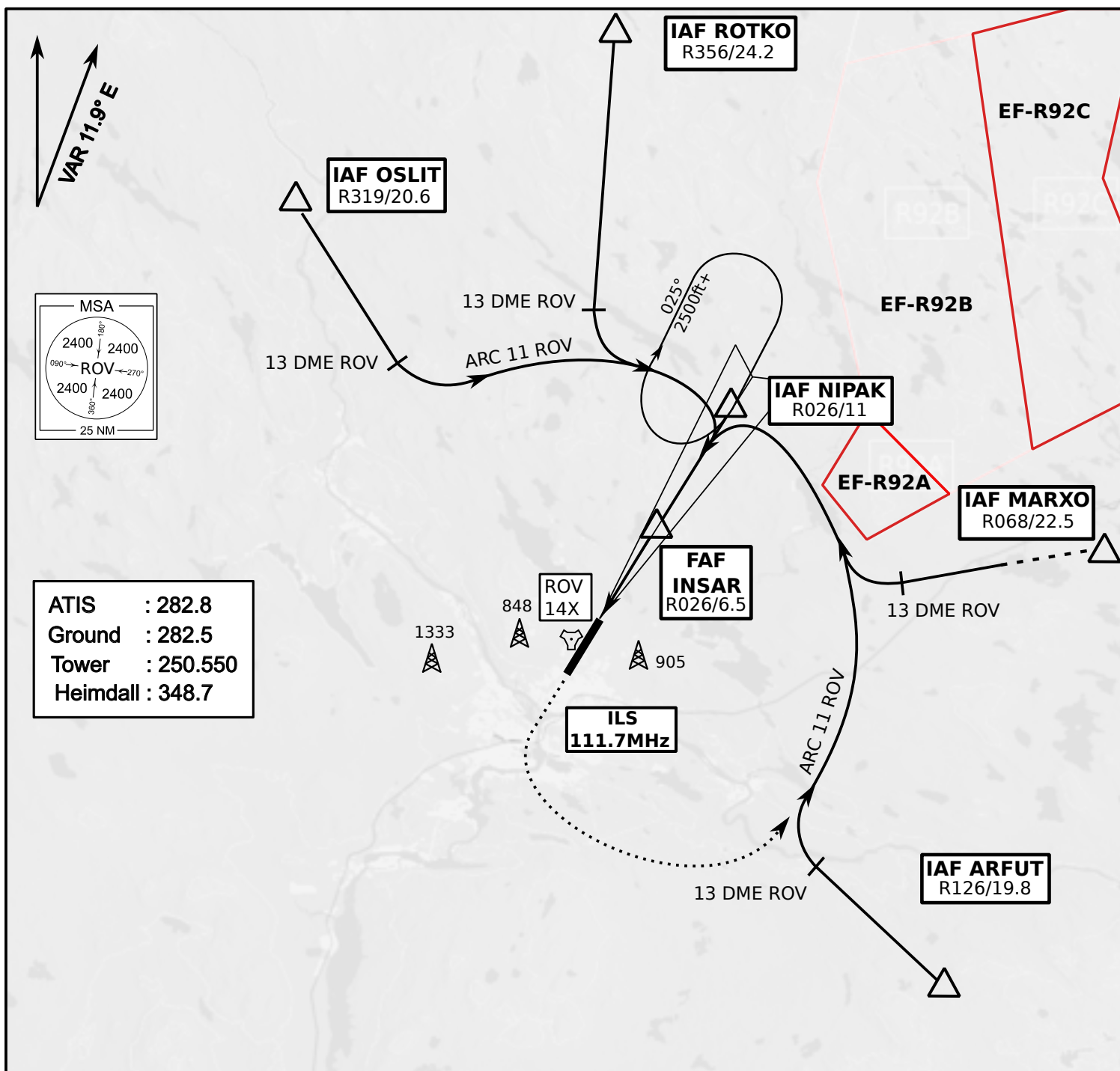


ATIS	Ground	Tower	Radar
282.800	282.500	250.550	348.700



- Climb on Rwy heading to min A2000ft
- when passing A2000ft OR 5 DME ROV (whichever is later) turn to exit point
- Stay outside ARC 5 ROV
- if EF-R92B is active :  
intercept R068 ROV inside 14 DME ROV to MARXO
- AB usage only if necessary for flight safety





**NOT AVAILABLE**

**NOT AVAILABLE**