

MISSION DATA CARD

| | | | | | | |
|--------------|---------------|-------------|--------------|-------------|--------|-----|
| OPORD | | Callsign | Mission | Date/Time | | |
| 3972/2025 | | Edelweiss 2 | Training | 262015JUN25 | | |
| Task | BJT Checkride | | | | Freq | |
| AO | | | | | 264.25 | |
| Departure | | | Recovery | | | |
| VFR Depature | | | VFR Approach | | | |
| # | Callsign | Pilot | IFF | TCN | LSR | NET |
| -1 | Edelweiss 2-1 | Ulukaii | 1721 | 1Y | 1721 | |

LOADOUT

| | | | |
|-----|--------|------|-----------|
| A/A | 2xA9X | GUN | 43% HEI-T |
| A/G | | CHF | 50 |
| POD | | FLR | 70 |
| TKS | FPU-8A | FUEL | 100% |

TOLD

| | | | | | |
|------|---------|--------|-------|-------|------|
| | Takeoff | Target | Joker | Bingo | Land |
| FUEL | 13047 | | | 3000 | |

AIRBASES

| | | | | | | | | |
|-----|-----------|-----|-------|-------|--------|-----|------|-------|
| | Name | TCN | ATIS | GND | TWR | RWY | Elev | ILS |
| Dep | Rovaniemi | 14X | 282.8 | 282.5 | 250.55 | 21 | 643 | 111.7 |
| Arr | Rovaniemi | 14X | 282.8 | 282.5 | 250.55 | 21 | 643 | 111.7 |

FLIGHTPLAN

| # | Name | Navaid/Coords/DME | ALT | TOT |
|---|------------------------|------------------------|-------|-----|
| 1 | RVNInit03 | N66 28.793 E025 44.105 | 1000 | |
| 2 | IMARI | N66 28.406 E025 31.291 | 3500 | |
| 3 | NEMGU | N66 20.400 E024 41.650 | 12000 | |
| 4 | T.ESR06.AntiS hip01 | N65 25.040 E023 57.726 | 12000 | |
| 5 | ARFUT | N66 18.988 E026 21.957 | 12000 | |
| 6 | VIKA | N66 37.474 E026 13.557 | 3000 | |
| 7 | RVNInit21 | N66 38.642 E025 58.682 | 2500 | |

SUPPORT**Tanker**

| Callsign | TCN | Freq | ALT | TAS |
|----------|-----|-------|-----|-----|
| SHELL 1 | 41Y | 360.8 | | |
| | Pos | | | |

AWACS

| Callsign | Freq | ALT | Pos |
|----------|-------|-----|-----|
| HEIMDALL | 348.7 | | |

OTHER FLIGHTS

| Callsign | Mission | Airframe | Freq | TCN | Grpld | Laser |
|-------------|----------|------------|--------------|------|-------|-------|
| Tiger 1 | Training | 4x F/A-18C | 261.15 | 1/64 | 1 | 155X |
| AO | | Task | Training | | | |
| Edelweiss 1 | Training | 4x F-16C | 134.0 | 1/64 | | 171X |
| AO | | Task | LCR Check #2 | | | |
| Cowboy 1 | Training | 4x AH-64D | 133.5 | 1/64 | | 170X |
| AO | | Task | | | | |
| Panther 3 | Training | 4x F/A-18C | 261.35 | 1/64 | | 157X |
| AO | ESR03 | Task | Convoy Hunt | | | |

RADIO CHANNELS

| # | Freq | Name |
|----|--------|---|
| 1 | | Flight/Squadron specific |
| 2 | 282.8 | Rovaniemi ATIS |
| 3 | 282.5 | Rovaniemi Ground |
| 4 | 250.55 | Rovaniemi Tower |
| 5 | 320.7 | Bodo ATIS |
| 6 | 250.75 | Bodo Tower |
| 7 | 235.45 | Kallax ATIS |
| 8 | 250.3 | Kallax Tower |
| 9 | 265.0 | Texaco-1 KC-135 Medium / Slow 71Y |
| 10 | 319.8 | Arco-1 KC-135 High / Fast 22Y |
| 11 | 360.8 | Shell-1 KC-135 MPRS High / Fast 41Y |
| 12 | 304.0 | CVN-71 Rough Rider (RRR) 71X |
| 13 | 303.0 | LHA-1 Tarawa (TWA) 79X |
| 14 | 247.8 | S-3B Mauler-1 (MAU) 64Y |
| 15 | 347.8 | Loki (E-2D) |
| 16 | 348.7 | Heimdall (E-3A) |
| 17 | 242.17 | ESR02 - CAS Range Operator |
| 18 | 34.7 | ESR02 - JTAC Odin |
| 19 | 270.5 | Blue |
| 20 | 270.75 | Red |

RAMROD

| | | | | | | | | | |
|---|---|---|---|---|---|---|---|---|---|
| 0 | 1 | 2 | 3 | 4 | 5 | 6 | 7 | 8 | 9 |
| C | O | N | J | U | G | A | T | E | S |

KTC 1400 C

| | 0 | 1 | 2 | 3 | 4 | 5 | 6 | 7 | 8 | 9 |
|---|------|-----|-----|----|----|-----|----|----|----|----|
| A | LSFK | RUI | XBT | AQ | PN | YMJ | WE | VO | DH | CG |
| B | HVUK | LTE | MXQ | AF | BP | IWY | RG | CO | ND | JS |
| C | JXDP | UCG | NSY | HL | TR | IQO | FA | MV | BK | EW |
| D | AMCL | PWG | ORT | EY | JS | NVX | KQ | HI | FD | BU |
| E | KMLR | QAT | VPE | JC | FB | WUO | DX | YN | HS | IG |
| F | VFYB | RAT | CJX | UG | KO | PSD | IH | MW | NL | EQ |
| G | BRYA | GEF | LWV | KS | XH | OTI | DJ | CU | QN | PM |
| H | YEQD | MHI | OVN | BT | JK | GAP | SW | CF | XU | LR |
| I | EKTG | DOJ | AHY | SM | BP | WXQ | IV | RF | UL | NC |
| J | XUFM | JET | DOC | NH | GQ | SIR | WY | VP | LB | AK |
| K | MYAO | WGH | FUD | IN | TJ | BSK | VQ | RP | CE | XL |
| L | NYDR | GXM | SQI | VC | JO | KTA | LU | PW | FH | EB |
| M | KMPT | DIL | BXY | WS | FG | VHO | AJ | EC | QN | UR |
| N | BWES | RUH | KCY | QX | DJ | OFP | IG | NL | VM | AT |
| O | CBAU | ILK | PGM | RE | FV | SXH | WJ | OQ | DT | YN |
| P | IUMT | KRD | QLW | CH | FY | ENO | AX | GJ | SP | VB |
| Q | RVAJ | DWQ | KIB | YU | MH | CFS | LG | OP | TX | NE |
| R | ROIN | DVU | EAJ | FY | PM | GHL | BK | TS | CX | WQ |
| S | KONW | FEY | AUD | XJ | SP | BLC | RT | GQ | HM | IV |
| T | MTCL | PFK | YIB | AN | HJ | RWX | QO | UD | GS | EV |
| U | GYHU | REB | SOP | AT | DK | JVC | MN | XL | IQ | WF |
| V | WVIK | RPU | YAM | HL | DQ | SBC | GX | JN | OF | TE |
| W | TIEC | NAP | UWB | SH | FG | MQK | XY | OR | JD | LV |
| X | NATR | VGf | KCY | EW | SQ | XMB | LU | HJ | PD | OI |
| Y | GTNM | POJ | LQK | DS | YU | ERB | AI | FH | XV | CW |

NAVAIDS

| Id | Name | Channel | Position | Elevation |
|-----|--------|---------|------------------------|-----------|
| BOO | Bodo | 45 | N67 15.838 E014 20.046 | 43 |
| BNK | Banak | 47 | N70 03.937 E024 58.181 | 17 |
| OYA | Andoya | 28 | N69 17.175 E016 08.658 | 19 |

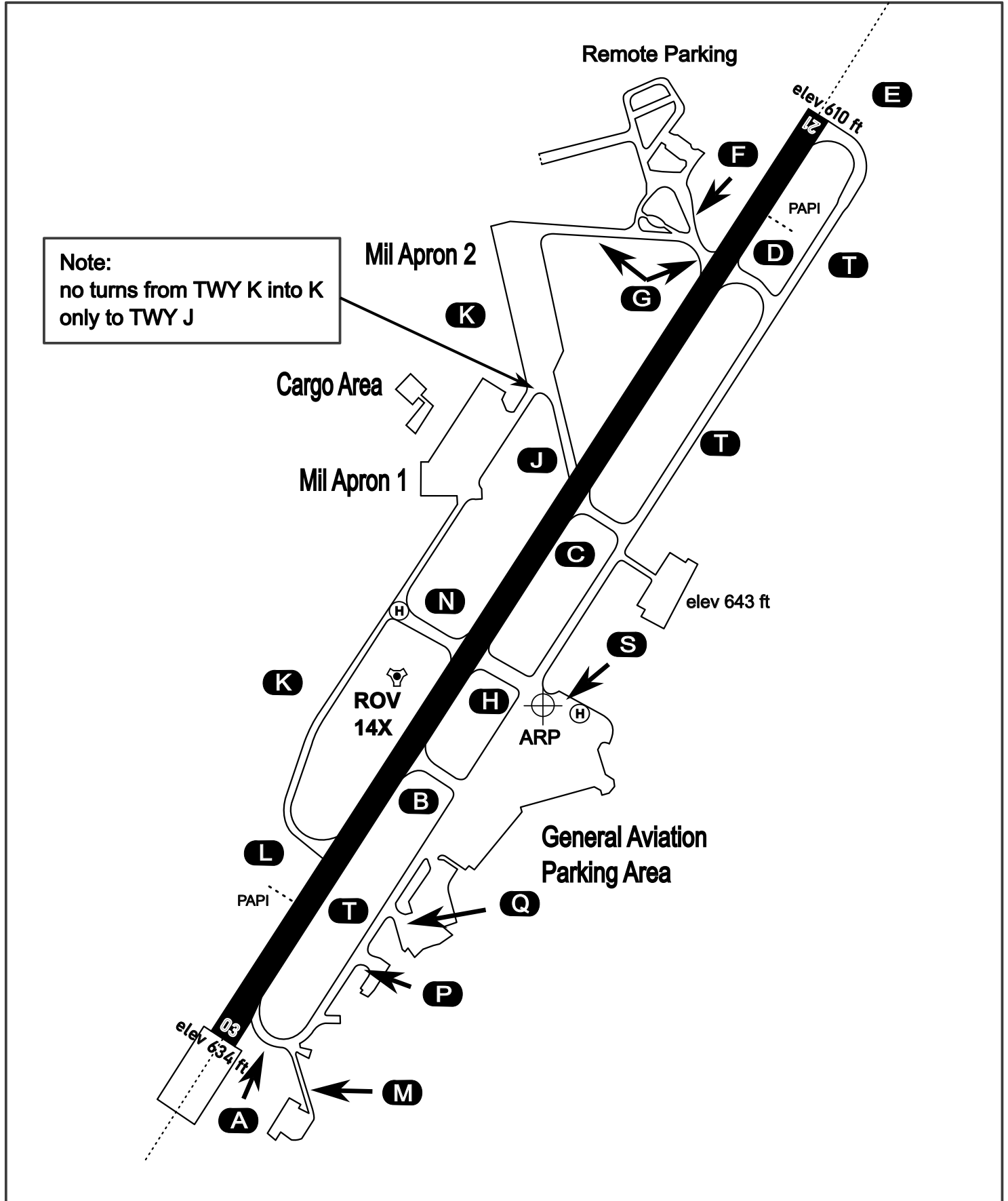
AERODROME CHART

Rovaniemi Aerodrome

ARP N66° 33' 42" E025° 49' 51"

elev 643 ft

ROVANIEMI, FINLAND

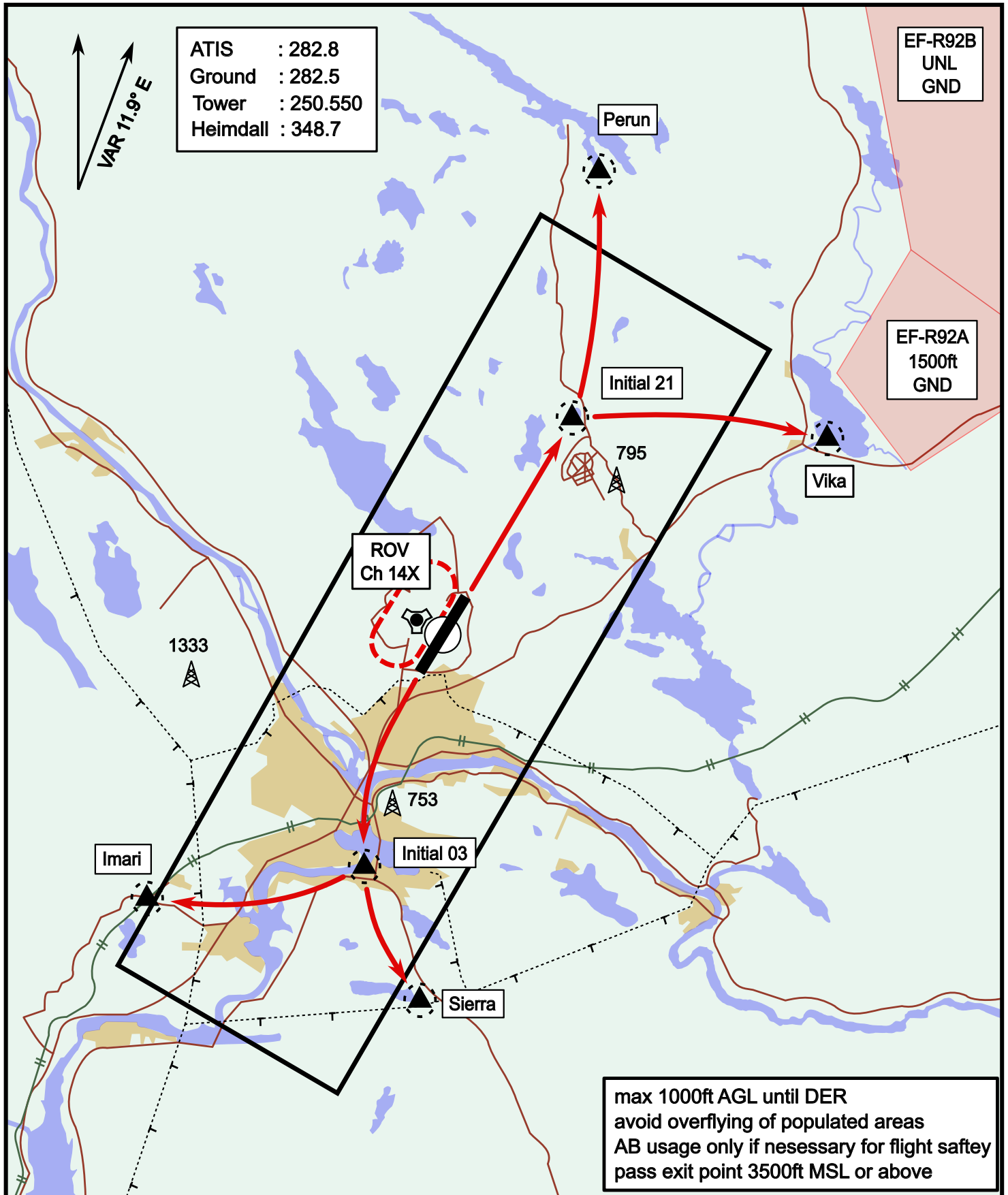


| ATIS | Ground | Tower | Radar |
|---------|---------|---------|---------|
| 282.800 | 282.500 | 250.550 | 348.700 |

Visual Departure Jet

elev 643 ft

Rovaniemi, Finland



| | | | |
|-----------|----------------------------|-----------|----------------------------|
| Vika | N66° 37.474 / E026° 13.557 | Sierra | N66° 25.711 / E025° 46.610 |
| Perun | N66° 44.135 / E026° 01.630 | Imari | N66° 28.406 / E025° 31.291 |
| Initial21 | N66° 38.421 / E025° 58.682 | Initial03 | N66° 28.793 / E025° 44.105 |

Visual Approach Jet

elev 643 ft

Rovaniemi, Finland



| | | | |
|-----------|----------------------------|-----------|----------------------------|
| Vika | N66° 37.474 / E026° 13.557 | Sierra | N66° 25.711 / E025° 46.610 |
| Perun | N66° 44.135 / E026° 01.630 | Imari | N66° 28.406 / E025° 31.291 |
| Initial21 | N66° 38.421 / E025° 58.682 | Initial03 | N66° 28.793 / E025° 44.105 |