

**MISSION DATA CARD**

OPORD		Callsign		Mission		Date/Time		
3954/2025		Raptor 2		Training		162000JUN25		
Task	LCR Check					Freq		
AO						134.0		
Departure				Recovery				
VFR Depature				VFR Approach				
#	Callsign		Pilot		IFF	TCN	LSR	NET
-1	Raptor 2-1		Meteor		1621	1Y	1621	

**LOADOUT**

A/A	2xA120C, 2xA9X				GUN	100% HEI-T	
A/G	6xM82				CHF	60	
POD					FLR	60	
TKS	3xFT300				FUEL	100%	

**TOLD**

	Takeoff	Target	Joker	Bingo	Land		
FUEL	13172			3000			

**AIRBASES**

	Name	TCN	ATIS	GND	TWR	RWY	Elev	ILS
Dep	Rovaniemi	14X	282.8	282.5	250.55	21	643	111.7
Arr	Rovaniemi	14X	282.8	282.5	250.55	21	643	111.7

**FLIGHTPLAN**

#	Name	Navaid/Coords/DME	ALT	TOT
1	RVNInit03	N66 28.793 E025 44.105	5000	
2	IMARI	N66 28.406 E025 31.291	15000	
3	IBSAN	N66 42.500 E025 01.083	20000	
4	ROTKO	N66 57.633 E025 57.667	20000	
5	entry R93A	N67 20.809 E025 43.320	20000	
6	R93A.BC.South	N67 21.228 E026 22.468	740	
7	NAFFI	N67 04.630 E023 11.660	20000	
8	SEPJA	N67 27.300 E021 12.080	20000	
9	ESR01	N68 23.743 E021	20000	
10	PERUN	N66 44.135 E026 01.630	3000	
11	RVNInit21	N66 38.642 E025 58.682	2500	
12	Rovaniemi	N66 33.861 E025 49.728	2000	

**COMMS**

Radio	Usage
1	Departure - #2 ATIS, #4 Tower
2	Enroute - #16 Heimdall
3	Recovery - #2 Atis, #4 Tower

## NOTES

Comms! Parameter!

R93A - Bomb Circles:  
Elevation - 740 ft AGL

LH Bombing Pattern  
Attack Heading - 090  
IP - 8NM to TGT

Comms Flow  
CS> Turning hot  
CS> Pickle  
CS> off - CLM SEM (Climbing Safe Escape Maneuvers), Crosswind  
Leg  
CS> turning Base - von Downwind in Base Leg

SAM Evasion:  
3/9 O'Clock  
Countermeasures  
Altitude!

AAR:  
Wiggle your fingers!  
Closure Rate ~ 10 Knots / 1NM

Recovery:  
Initial - 2000 ft MSL, Speed, Check Heading for Downwind  
Break - 60 degree Bank, 2-3 G, reduce Speed  
Downwind - Heading, Runway Separation, Gear Down, Check  
Lights  
Base Turn - 45 degree Bank, 5-8 degree Nose low  
Roll out - 300 ft AGL, 1NM

**SUPPORT****Tanker**

Callsign	TCN	Freq	ALT	TAS
ARCO 1	22Y	319.8		
Pos				

## OTHER FLIGHTS

Callsign	Mission	Airframe	Freq	TCN	Grpld	Laser
Nazgul 6	Training	4x F-15E	262.45	1/64		156X
AO	R92B	Task	Buddylasing AH-64D			
Raptor 1	Training	4x F-16C	134.0	1/64		162X
AO		Task	LCR Check			
Claw 2	Training	2x AH-64D	133.5	1/64		171X
AO	R92B	Task				
Monster 1	Training	2x A-10C	132.15	1/64	21	161X
AO	ESR03	Task	Dumb Bomb Training			
Panther 3	Training	4x F/A-18C	261.35	1/64		157X
AO	ESR03	Task	Convoy Hunt			
Edelweiss 1	Training	1x F/A-18C	264.15	1/64		171X
AO		Task	Airwork at ESR06			

**RADIO CHANNELS**

#	Freq	Name
1		Flight/Squadron specific
2	282.8	Rovaniemi ATIS
3	282.5	Rovaniemi Ground
4	250.55	Rovaniemi Tower
5	320.7	Bodo ATIS
6	250.75	Bodo Tower
7	235.45	Kallax ATIS
8	250.3	Kallax Tower
9	265.0	Texaco-1   KC-135   Medium / Slow   71Y
10	319.8	Arco-1   KC-135   High / Fast   22Y
11	360.8	Shell-1   KC-135 MPRS   High / Fast   41Y
12	304.0	CVN-71 Rough Rider (RRR)   71X
13	303.0	LHA-1 Tarawa (TWA)   79X
14	247.8	S-3B Mauler-1 (MAU)  64Y
15	347.8	Loki (E-2D)
16	348.7	Heimdall (E-3A)
17	242.17	ESR02 - CAS Range Operator
18	34.7	ESR02 - JTAC Odin
19	270.5	Blue
20	270.75	Red

**RAMROD**

0	1	2	3	4	5	6	7	8	9
C	O	N	J	U	G	A	T	E	D

**KTC 1400 C**

	0	1	2	3	4	5	6	7	8	9
A	OSHN	XAD	JBC	GR	LY	MTE	PK	VQ	IW	FU
B	TNJW	OKU	GXL	DR	MB	CIH	YP	AF	VE	SQ
C	EMAD	YJG	IXC	TL	VO	RWF	PK	QH	UN	SB
D	BFOU	WAP	HXG	SL	TM	NRV	IJ	VK	EQ	CD
E	NOSP	UGD	MCB	EX	YT	QWH	VF	LR	JA	KI
F	DYTC	LKU	HRM	JW	BS	EQF	GX	VP	AO	IN
G	MHUR	LAN	PXB	IV	OQ	JCE	GW	ST	DY	FK
H	LVST	MDN	HWY	IF	BJ	PGR	KX	EU	CO	AQ
I	MAOR	HEK	QIT	GP	LY	FWU	CN	DX	SJ	VB
J	RECK	YBA	SNO	VT	UM	HDF	IJ	WG	QP	XL
K	HLXF	QMJ	IAK	ER	GY	TVS	UP	OC	BW	DN
L	CKOS	VUW	NJI	YA	GH	FEL	BX	DM	QT	PR
M	RUWG	JNV	MXD	KC	YE	SFO	LH	BI	PA	QT
N	IPAO	WTN	DEQ	LU	RH	CBX	KG	VS	YM	JF
O	MRJV	BWH	KFQ	ND	TL	ECP	SY	GO	XA	IU
P	DFPN	SRW	ETM	BH	QG	OXY	JA	LC	UK	IV
Q	DOCI	JGN	WHX	SE	RQ	TMP	FA	KL	VB	YU
R	RLXG	IPN	YEJ	BF	CV	QTS	MH	UW	DA	KO
S	UDBF	WPG	JXK	RY	CS	MHA	LI	QE	NV	OT
T	QKTF	MPY	ADR	WB	EX	OGJ	LU	VH	CN	IS
U	RJHP	LDC	WVE	YX	SM	FAB	IK	NT	QO	GU
V	WVNS	AIO	GLB	YT	CE	JUP	RK	HD	XM	QF
W	VBKY	WPU	OMQ	CJ	SG	ETD	IF	RH	XA	LN
X	NBDY	CFO	ESW	TR	UJ	VPA	HM	XQ	LG	IK
Y	SYJT	WUM	CNR	BG	QK	XOA	DI	LH	VF	PE

**NAVAIDS**

Id	Name	Channel	Position	Elevation
BOO	Bodo	45	N67 15.838 E014 20.046	43
BNK	Banak	47	N70 03.937 E024 58.181	17
OYA	Andoya	28	N69 17.175 E016 08.658	19



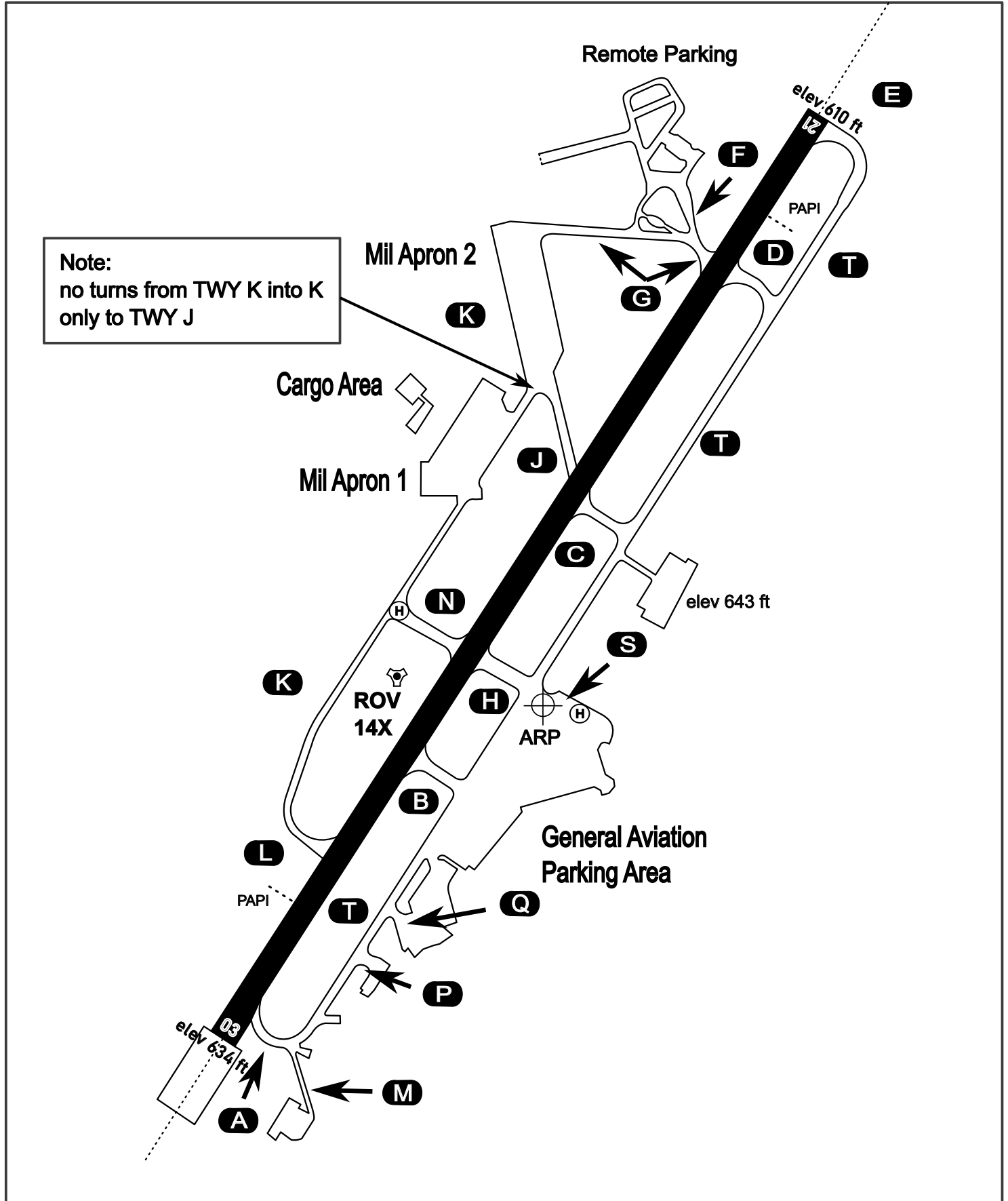
# AERODROME CHART

Rovaniemi Aerodrome

ARP N66° 33' 42" E025° 49' 51"

elev 643 ft

## ROVANIEMI, FINLAND

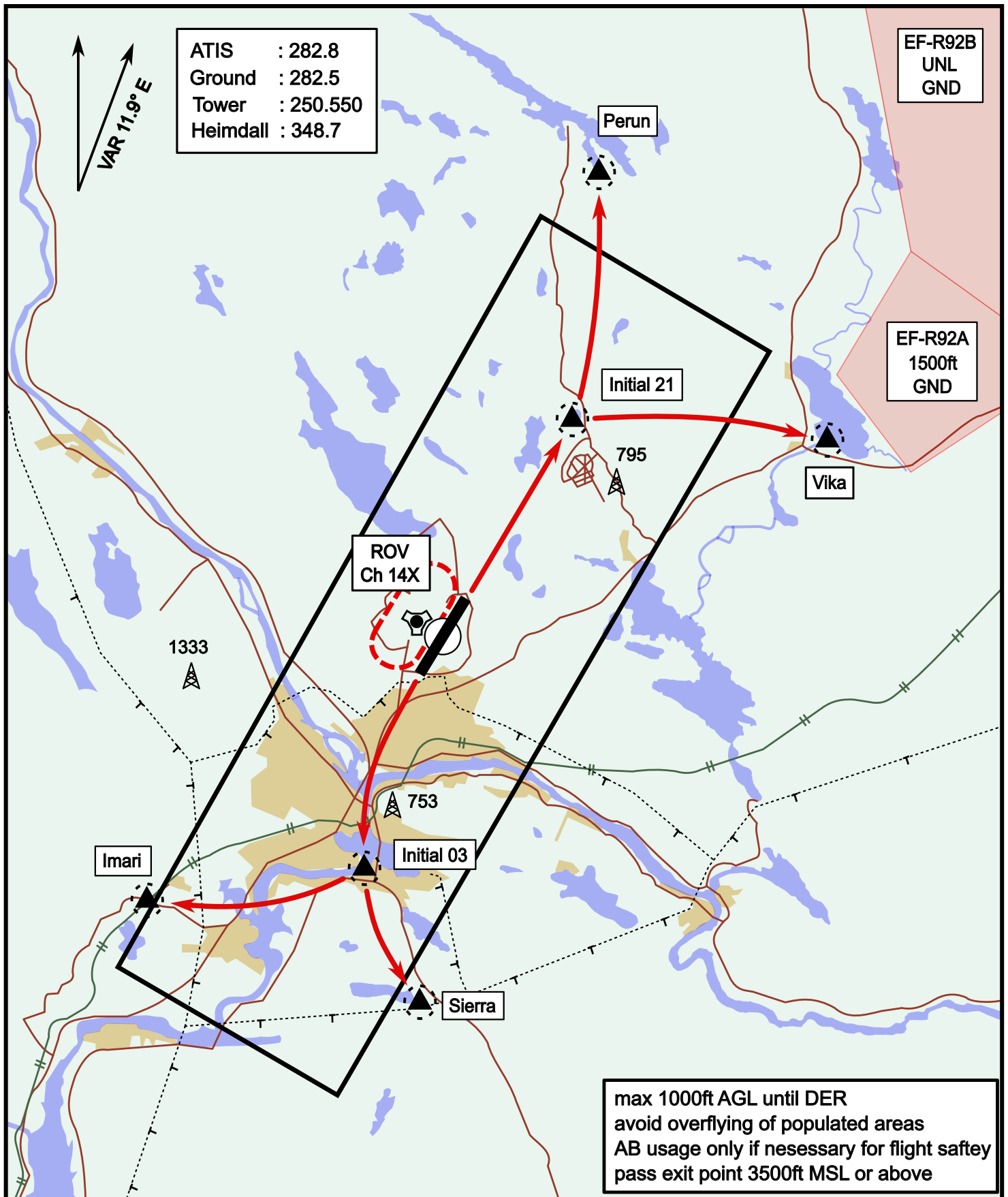


ATIS	Ground	Tower	Radar
282.800	282.500	250.550	348.700

# Visual Departure Jet

elev 643 ft

# Rovaniemi, Finland

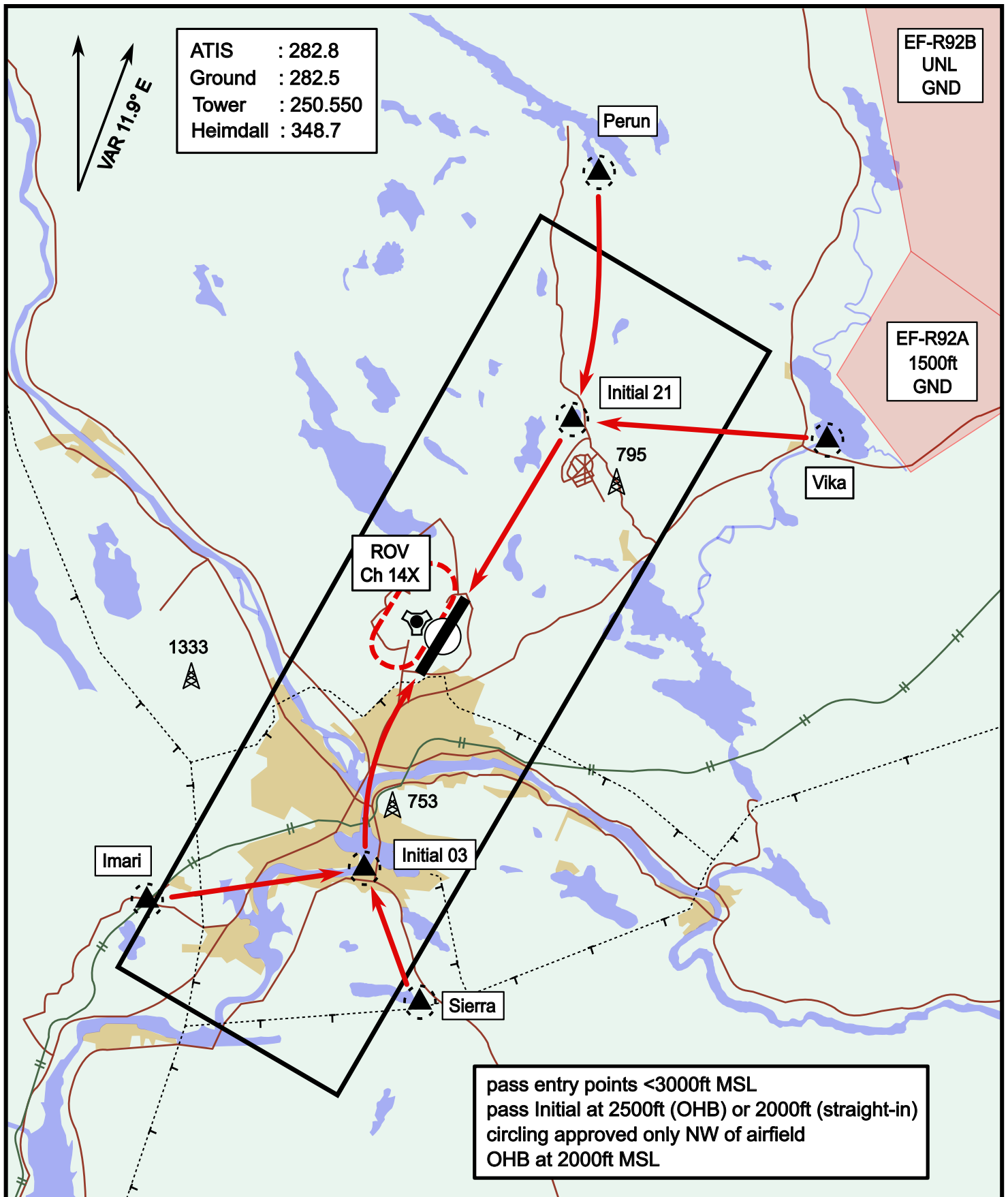


Vika	N66° 37.474 / E026° 13.557	Sierra	N66° 25.711 / E025° 46.610
Perun	N66° 44.135 / E026° 01.630	Imari	N66° 28.406 / E025° 31.291
Initial21	N66° 38.421 / E025° 58.682	Initial03	N66° 28.793 / E025° 44.105

# Visual Approach Jet

elev 643 ft

# Rovaniemi, Finland



Vika	N66° 37.474 / E026° 13.557	Sierra	N66° 25.711 / E025° 46.610
Perun	N66° 44.135 / E026° 01.630	Imari	N66° 28.406 / E025° 31.291
Initial21	N66° 38.421 / E025° 58.682	Initial03	N66° 28.793 / E025° 44.105