

MISSION DATA CARD

OPORD		Callsign		Mission		Date/Time	
3925/2025		Raptor 1		Training		052000JUN25	
Task	AAR/ TAC Turns					Freq	
AO						264.05	
Departure				Recovery			
SID RWY 21				ILS RWY 21			
#	Callsign	Pilot		IFF	TCN	LSR	NET
-1	Raptor 1-1	Jinx		1611	1Y	1701	
-2	Raptor 1-2	Void		1612	64Y	1702	

LOADOUT

A/A	2xA120C, 2xA9X				GUN	100% HEI-T	
A/G					CHF	60	
POD					FLR	60	
TKS	2xFT300				FUEL	100%	

TOLD

	Takeoff	Target	Joker	Bingo	Land
FUEL	11169				

AIRBASES

	Name	TCN	ATIS	GND	TWR	RWY	Elev	ILS
Dep	Rovaniemi	14X	282.8	282.5	250.55	21	643	111.7
Arr	Rovaniemi	14X	282.8	282.5	250.55	21	643	111.7

FLIGHTPLAN

#	Name	Navaid/Coords/DME	ALT	TOT
1	IBSAN	N66 42.500 E025 01.083	14000	
2	NAFFI	N67 04.630 E023 11.660	14000	
3	REF	N67 47.057 E022	20000	
4	ROTKO	N66 57.633 E025 57.667	8000	
5	NIPAK	N66 42.350 E026 06.083	4000	

NOTES

DEP via SID IPSAN1S, RADAR TRAIL

After DEP Push Tanker for Refuel. ON Route Reforming.

Then TAC Turns

RTB Formation Split and ILS Singel ARR via IAF ROTKO RW21

SUPPORT**Tanker**

Callsign	TCN	Freq	ALT	TAS
ARCO 1	22Y	319.8		
	Pos			

AWACS

Callsign	Freq	ALT	Pos
HEIMDALL	348.7		

OTHER FLIGHTS

Callsign	Mission	Airframe	Freq	TCN	Grpld	Laser
Panther 3	Training	2x F/A-18C	261.25	1/64	3	155X
AO	TESR04 Convoy Attack	Task	Night Attack			
Nazgul 6	Training	4x F-15E	262.45	1/64		156X
AO		Task	IFR Training Rovaniemi			
Tiger 5	Training	4x F/A-18C	261.15	14/77	1	155X
AO	TESR04 Armored Attack	Task	Night Attack			
Edelweiss	Training	2x F/A-18C	264.05	1/64	3	170X
AO	ESR06 (Anti Ship Range 01)	Task	Airwork at ESR06			

RADIO CHANNELS

#	Freq	Name
1		Flight/Squadron specific
2	282.8	Rovaniemi ATIS
3	282.5	Rovaniemi Ground
4	250.55	Rovaniemi Tower
5	320.7	Bodo ATIS
6	250.75	Bodo Tower
7	235.45	Kallax ATIS
8	250.3	Kallax Tower
9	265.0	Texaco-1 KC-135 Medium / Slow 71Y
10	319.8	Arco-1 KC-135 High / Fast 22Y
11	360.8	Shell-1 KC-135 MPRS High / Fast 41Y
12	304.0	CVN-71 Rough Rider (RRR) 71X
13	303.0	LHA-1 Tarawa (TWA) 79X
14	247.8	S-3B Mauler-1 (MAU) 64Y
15	347.8	Loki (E-2D)
16	348.7	Heimdall (E-3A)
17	242.17	ESR02 - CAS Range Operator
18	34.7	ESR02 - JTAC Odin
19	270.5	Blue
20	270.75	Red

RAMROD

0	1	2	3	4	5	6	7	8	9
D	E	M	O	G	R	A	P	H	Y

KTC 1400 C

	0	1	2	3	4	5	6	7	8	9
A	FAOE	UYS	RNV	DB	QX	LMW	JI	CK	PG	HT
B	RMWE	HLF	UAG	OT	CQ	DSY	NB	PJ	XV	IK
C	HNQD	PRK	LXI	BF	TU	CJW	YM	ES	OG	VA
D	VGCT	BWJ	AUN	FL	PK	HME	YX	QI	RS	DO
E	FCBM	VPA	HEN	LJ	KY	QXW	DG	TS	RO	UI
F	DOPS	GMF	WVJ	IC	XB	LKT	NA	RU	YH	EQ
G	JFME	NOL	KSA	GD	VQ	HCY	WR	XI	UP	BT
H	GBCX	FNT	AOS	PK	IH	UDM	RW	QJ	EL	VY
I	LAWD	HNI	MYU	CX	PG	KRO	SJ	QE	VT	FB
J	LJMK	SEX	VIA	GT	QF	RDP	OC	YN	HB	WU
K	FJCO	UIN	STM	XA	GY	PKQ	VL	HD	RE	BW
L	NIAK	GPH	ODF	WE	CU	MTR	SX	JV	YB	QL
M	HOFD	VBN	MKP	TE	RG	YIJ	AC	QW	XU	SL
N	YNFH	BMS	LWP	VD	KC	JRO	TA	XU	EI	GQ
O	ENOT	CAX	VUB	QG	YR	PFD	WI	SM	JH	LK
P	TOIF	WUY	VXQ	KL	ES	CDN	GM	HR	JB	PA
Q	GRWM	QLE	PIV	BH	TD	KAO	SJ	NF	YC	XU
R	YPIK	DHF	SAW	GN	VT	UMX	BE	CL	JR	OQ
S	SPBC	MWK	HUI	QA	YV	ENX	OL	GT	JR	DF
T	HOIP	GCK	FWT	RL	SB	YME	VX	UJ	AQ	ND
U	WHTN	LXJ	GAB	CV	DF	QRI	UE	PY	SM	KO
V	WGJA	NCM	PDH	EU	BT	OYF	LR	VQ	SK	IX
W	CBEG	SDX	FNR	LI	HT	QJP	AO	WM	KY	VU
X	UVFD	QIK	LYO	RN	JC	GES	BW	AT	XM	HP
Y	ILCT	DFN	KOA	RX	GP	QYV	WU	SB	EJ	HM

NAVAIDS

Id	Name	Channel	Position	Elevation
BOO	Bodo	45	N67 15.838 E014 20.046	43
BNK	Banak	47	N70 03.937 E024 58.181	17
OYA	Andoya	28	N69 17.175 E016 08.658	19

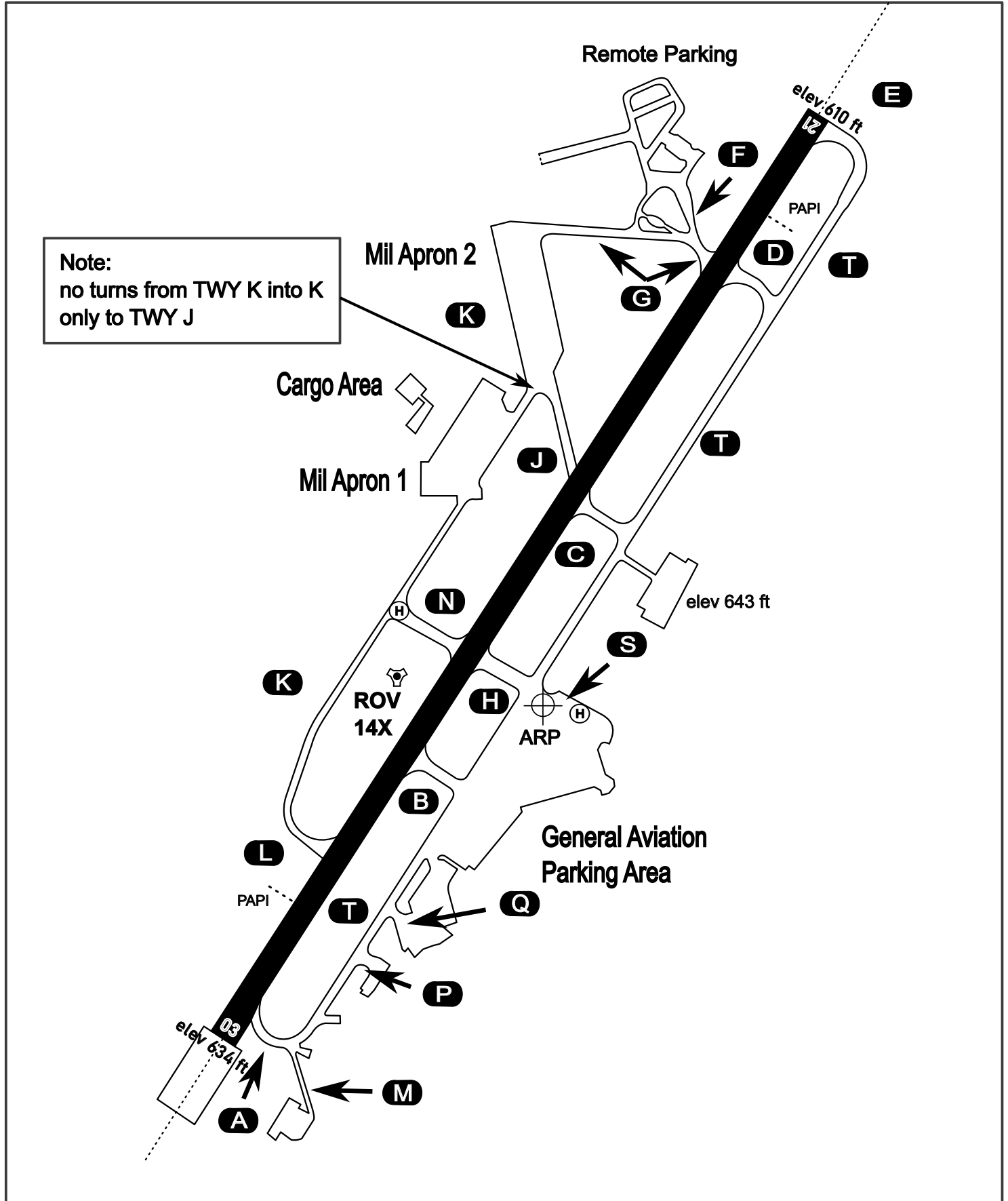
AERODROME CHART

Rovaniemi Aerodrome

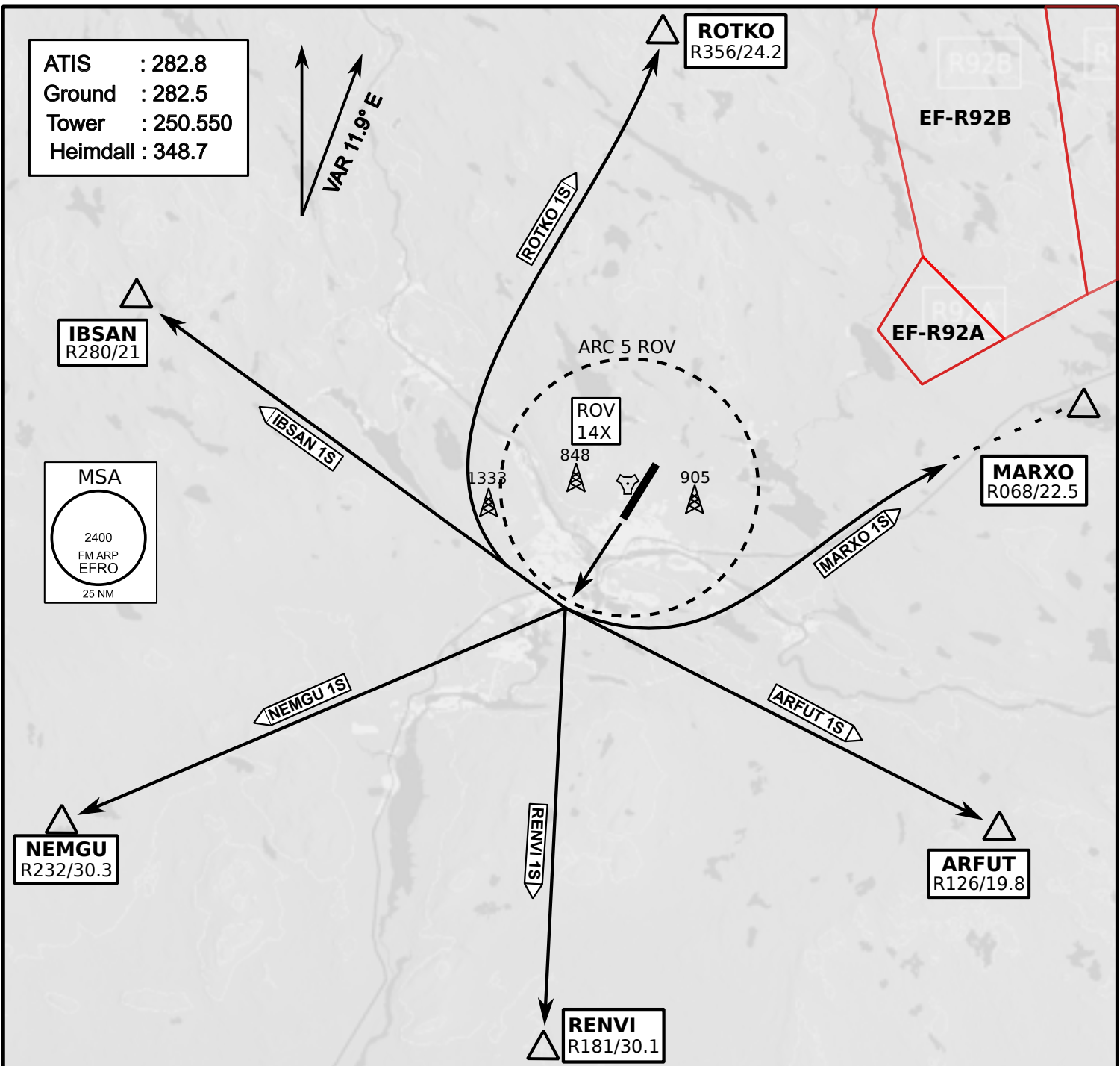
ARP N66° 33' 42" E025° 49' 51"

elev 643 ft

ROVANIEMI, FINLAND



ATIS	Ground	Tower	Radar
282.800	282.500	250.550	348.700



- Climb on Rwy heading to min A2000ft
- when passing A2000ft OR 5 DME ROV (whichever is later) turn direct exit point
- Stay outside ARC 5 ROV
- AB usage only if necessary for flight safety

