

MISSION DATA CARD

| | | | | | | | | |
|-----------|------------|----------|--------|----------|------|-------------|------|-----|
| OPORD | | Callsign | | Mission | | Date/Time | | |
| 3896/2025 | | Raptor 1 | | Training | | 202000MAY25 | | |
| Task | | | | | | Freq | | |
| AO | | | | | | 134.0 | | |
| Departure | | | | Recovery | | | | |
| RWY28 VFR | | | | TAC 28 | | | | |
| # | Callsign | | Pilot | | IFF | TCN | LSR | NET |
| -1 | Raptor 1-1 | | Meteor | | 1611 | 1Y | 1621 | |

LOADOUT

| | | | | | | | |
|-----|---------|--|--|--|------|------------|--|
| A/A | 2xA120C | | | | GUN | 100% HEI-T | |
| A/G | | | | | CHF | 120 | |
| POD | | | | | FLR | 0 | |
| TKS | FT300 | | | | FUEL | 100% | |

TOLD

| | | | | | |
|------|---------|--------|-------|-------|------|
| | Takeoff | Target | Joker | Bingo | Land |
| FUEL | 9166 | | | | |

AIRBASES

| | | | | | | | | |
|-----|--------------|------|-------|-------|--------|-----|------|-------|
| | Name | TCN | ATIS | GND | TWR | RWY | Elev | ILS |
| Dep | Akrotiri AFB | 107X | 288.2 | 240.1 | 339.85 | 28 | 62 | 109.7 |
| Arr | Akrotiri AFB | 107X | 288.2 | 240.1 | 339.85 | 28 | 62 | 109.7 |

FLIGHTPLAN

| # | Name | Navaid/Coords/DME | ALT | TOT |
|---|--------|------------------------|------|-----|
| 1 | MEZUS | N34 25.109 E032 03.519 | 5000 | |
| 2 | ANANE | N34 18.048 E032 43.619 | 5000 | |
| 3 | IREFA | N34 25.328 E033 26.664 | 5000 | |
| 4 | PAPA | N34 39.390 E032 46.480 | 5000 | |
| 5 | SIERRA | N34 25.310 E032 58.400 | 5000 | |
| 6 | ECHO | N34 42.600 E033 10 | 5000 | |

RADIO CHANNELS

| # | Freq | Name |
|----|---------|-----------------------------|
| 1 | | Flight/Squadron specific |
| 2 | 288.2 | Akrotiri ATIS |
| 3 | 240.1 | Akrotiri Ground |
| 4 | 339.85 | Aktrotiri Tower |
| 5 | 335.05 | Akrotiri Approach |
| 6 | 360.1 | Incirlik Tower |
| 7 | 371.35 | Incirlik Ground |
| 8 | 377.475 | Incirlik ATIS |
| 9 | | No Preset |
| 10 | 127.3 | Paphos ATIS |
| 11 | 353.8 | Paphos Tower |
| 12 | 304.0 | CVN-73 George Washington |
| 13 | 302.0 | LHA-1 Tarawa |
| 14 | 259.0 | CV-59 Forrestal |
| 15 | | No Preset |
| 16 | 377.8 | Overlord |
| 17 | 265.0 | KC-135 Texaco-1 medium/slow |
| 18 | 319.8 | KC-135 Arco-1 |
| 19 | 360.8 | KC-135MPRS Arco-2 |
| 20 | 256.0 | S-3B Recovery Tanker |

RAMROD

| | | | | | | | | | |
|---|---|---|---|---|---|---|---|---|---|
| 0 | 1 | 2 | 3 | 4 | 5 | 6 | 7 | 8 | 9 |
| T | U | M | B | L | E | D | O | W | N |

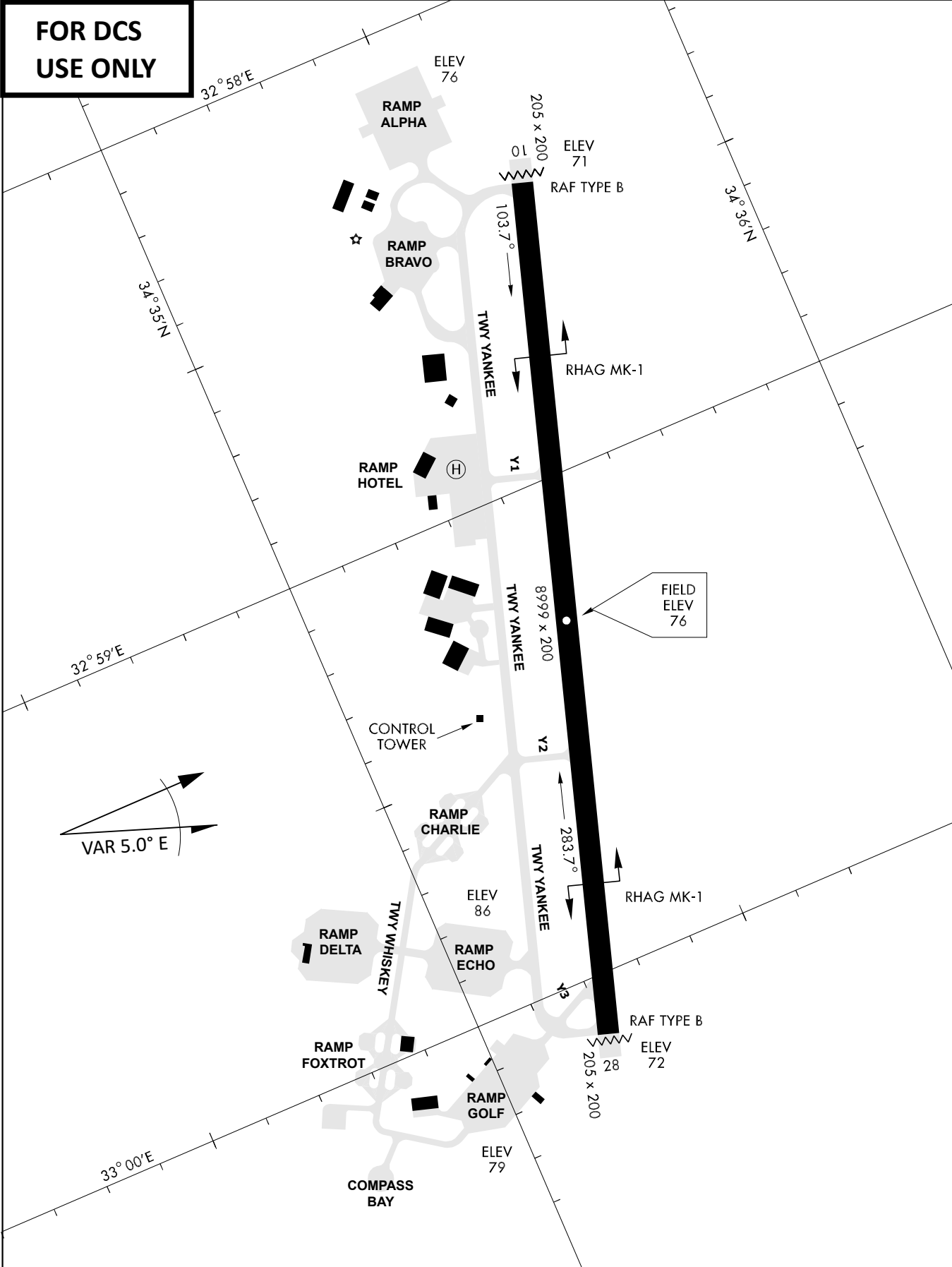
KTC 1400 C

| | 0 | 1 | 2 | 3 | 4 | 5 | 6 | 7 | 8 | 9 |
|---|------|-----|-----|----|----|-----|----|----|----|----|
| A | XBEW | QLM | HKN | CP | TR | DYF | JO | GA | SU | IV |
| B | WMOY | THF | RAQ | VC | EP | NKX | BS | LI | GU | DJ |
| C | SCHB | IGX | AVM | JT | WP | ONU | EL | YF | RQ | DK |
| D | ERLM | HKU | FJQ | IG | WB | XVD | AT | CS | YP | ON |
| E | FAQH | XNB | JTD | LM | PS | VCG | YU | ER | KO | WI |
| F | NBGU | IED | RYQ | OW | CH | TSP | MK | VL | XJ | FA |
| G | VIAR | FLK | PTC | EU | JY | XGD | MN | WH | OQ | BS |
| H | XWQO | SPB | NKJ | FI | GL | MUA | DY | HV | CR | TE |
| I | VWHK | CFL | UDB | JO | IS | GYR | PM | TA | EN | XQ |
| J | GVMQ | DHF | JBS | CX | EU | NRY | TL | OW | KI | PA |
| K | XYEU | NJC | VDT | BM | LG | IPQ | OA | RW | HF | SK |
| L | RDCP | INE | UBW | TM | LV | HFO | QA | KY | GX | SJ |
| M | BSXV | EJT | LGK | WQ | CH | IPN | OA | UD | MF | YR |
| N | SQTM | JOE | VNR | DG | WI | XYK | PB | UL | HF | AC |
| O | OGVB | YSN | CJA | PX | ME | WLD | HI | KR | UT | QF |
| P | NGYL | XWF | ERU | AO | IS | JTK | PQ | CB | VD | HM |
| Q | DIFC | OMN | AGS | EJ | LY | QRT | VH | XW | UB | PK |
| R | WGNM | YFX | TSQ | UJ | HB | RDA | VE | IC | KL | PO |
| S | KUND | QCT | RMI | FE | SB | LVW | AP | OG | XJ | YH |
| T | CBEO | MRD | TKH | NU | YQ | GWS | PV | FA | JI | XL |
| U | NVDL | WAI | YFO | BM | GE | UXQ | RS | JC | KP | TH |
| V | FEPU | DYR | COG | KI | VW | LXT | AJ | QH | NS | MB |
| W | AHEC | QJD | WNR | XT | LM | VGO | UI | FP | SB | YK |
| X | OMFK | GAV | XDY | IE | SL | TNP | JB | HC | RU | WQ |
| Y | LJBV | KPO | ADN | XU | MI | TER | SW | CQ | FH | GY |

NAVAIDS

| Id | Name | Channel | Position | Elevation |
|-----------|---|----------------|------------------------|------------------|
| DAN | Incirlik | 21 | N37 00.950 E035 26.883 | 243 |
| AKR | Akrotiri | 107 | N34 34.765 E032 57.769 | 147 |
| PHA | Paphos | 79 | N34 42.997 E032 28.963 | 35 |
| RMD | Ramat David | 84 | N32 39.892 E035 11.265 | 136 |
| OS66 | Kuweires Military Aviation Institute | 36 | N36 11.362 E037 34.226 | 1200 |

**FOR DCS
 USE ONLY**

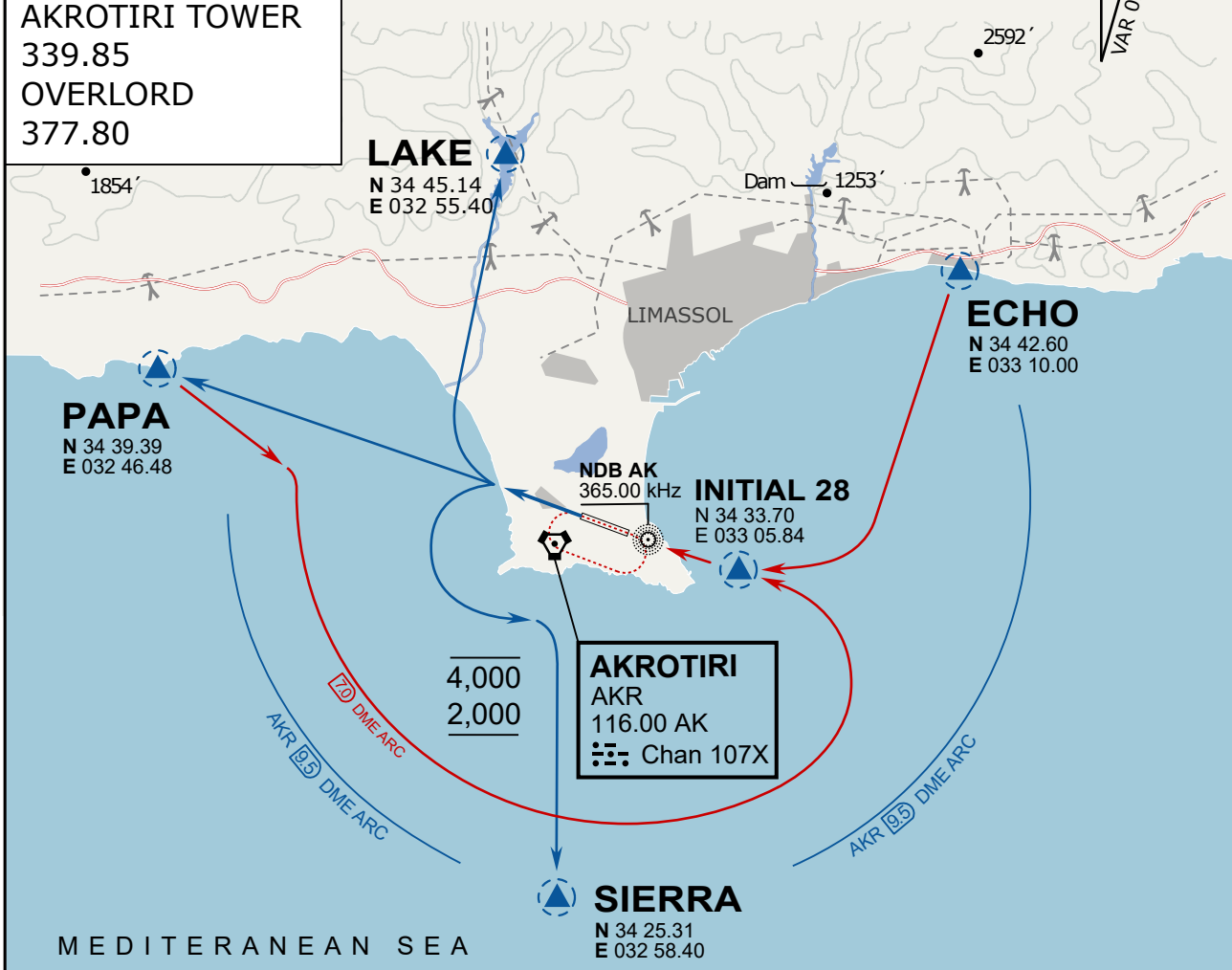


| ATIS | AKROTIRI GND | AKROTIRI TWR | OVERLORD CONTROL | TACAN | FIELD ELEVATION |
|------------|-----------------|------------------|------------------|----------|-----------------------|
| 288.20 MHz | 240.10 122.10 | 339.85 130.075 | 377.8 | AKR 107X | 75 [ft] 23 [m] |

ATIS
 288.20
AKROTIRI GROUND
 240.10
AKROTIRI TOWER
 339.85
OVERLORD
 377.80

NOT FOR CIVIL USE

CAUTION: If unable to comply
 with restrictions advise ATC
 prior to departure.



ARR / DEP ROUTE DESCRIPTION

STRAIGHT-IN RWY28

Pass ENTRY at 5.000' MSL or below, pass INITIAL at 1.500' MSL or below.

OVERHEAD BREAK RWY28

Pass ENTRY at 5.000' MSL or below, pass INITIAL at 2.000' MSL, break to the south.

DEPARTURE GENERAL

Pass Departure end of runway at 1.000' or below.

DEP RWY28 PAPA: Fly straight ahead to exit.

DEP RWY28 LAKE: Fly straight ahead until coast, than right turn direct exit.

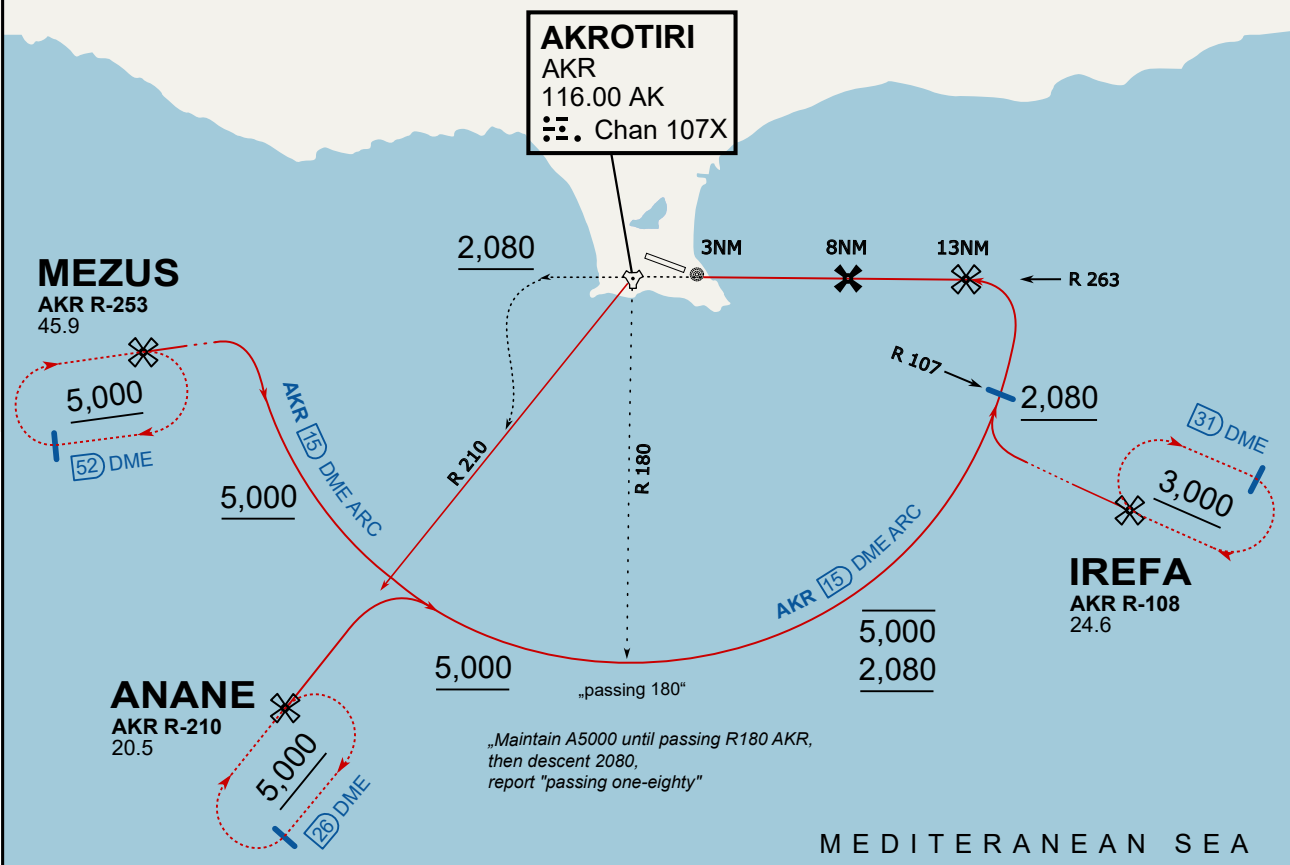
DEP RWY28 SIERRA: Fly straight ahead until coastline, then climbing left turn, intercept AKR R-180 to exit.

DEP ECHO: no exit.

ATIS
288.200
AKROTIRI GROUND
122.100
AKROTIRI TOWER
339.850
APP (OVERLORD)
377.800

NOT FOR CIVIL USE

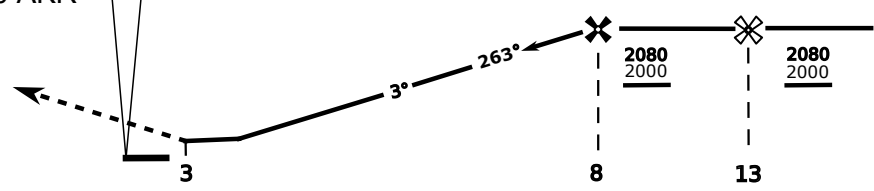
CAUTION: If unable to comply with restrictions advise ATC prior to departure.



On Track 263° climb A 4.000'.
 passing 2.080' (2.000' AAL)
 turn left and intercept R-210 AKR
 to ANANE.
 Enter ANANE Holding.



| | | | | |
|---------|------|------|------|-----|
| DME AKR | 7 | 6 | 5 | 4 |
| ALT | 1780 | 1460 | 1140 | 820 |



THR Elev 74ft DME AKR

| CAT | TAC | CIRCLE | GS (kts) | 80 | 120 | 150 | 180 | 210 |
|-----|----------------------|----------------------|--|------|------|------|------|------|
| A | 500(430) | 680 (610) 2000m | FAF - MAPt (4.1NM) | 3:06 | 2:03 | 1:38 | 1:22 | 1:10 |
| B | 1300m | | RoD (fpm) | 420 | 640 | 800 | 950 | 1110 |
| C | 780 (710) | 780 (710) 3300m | - CIRCLING PROHIBITED N of Rwy - final track is offset 20° right of RCL and Intcp 1.1NM before THR - when established on final contact tower - Timing not Auth to define MAPt | | | | | |
| D | 2600m | 780 (710) 3600m | | | | | | |
| E | 1380 (1310) 5000m | 1380 (1310) 5000m | | | | | | |

