

MISSION DATA CARD

OPORD		Callsign		Mission		Date/Time	
3893/2025		Raptor 1		SEAD		222000MAY25	
Task	SEAD					Freq	
AO	ESR01					134.0	
Departure				Recovery			
VFR Departure				VFR Approach			
#	Callsign	Pilot	IFF	TCN	LSR	NET	
-1	Raptor 1-1	Void	1611	1Y	1621		
-2	Raptor 1-2	Woodman	1612	64Y	1622		
-3	Raptor 1-3	Newbie	1613	64X	1623		

LOADOUT

A/A	2xA120C, 2xA9X			GUN	100% HEI-T
A/G	4xA88C			CHF	120
POD	HTS, TGP			FLR	0
TKS	FT300			FUEL	100%

TOLD

	Takeoff	Target	Joker	Bingo	Land
FUEL	9166				

AIRBASES

	Name	TCN	ATIS	GND	TWR	RWY	Elev	ILS
Dep	Rovaniemi	14X	282.8	282.5	250.55	21	643	111.7
Arr	Rovaniemi	14X	282.8	282.5	250.55	21	643	111.7
Div	Kemi Tornio	106X			250.3	36	62	110.9

FLIGHTPLAN

#	Name	Navaid/Coords/DME	ALT	TOT
1	IMARI	N66 28.406 E025 31.291	4000	
2	IBSAN	N66 42.500 E025 01.083	20000	
3	NAFFI	N67 04.630 E023 11.660	20000	
4	IP	N68 26.085 E022 39.717	20000	
5	TGT	N68 27.828 E020 52.928	0	
6	NAFFI	N67 04.630 E023 11.660	20000	
7	IBSAN	N66 42.500 E025 01.083	20000	
8	PERUN	N66 44.135 E026 01.630	4000	
9	RV	N66 33.844 E025 49.712	2000	

NOTES

Raptor 1: FAH 90° + 20(FL220) + 40(FL240) - SA3

Viper 2: FAH 90° - 20(FL220) - 40(FL240) - SA2

Falcon 3: FAH 90° (FL200)

SUPPORT**Tanker**

Callsign	TCN	Freq	ALT	TAS
ARCO 1	22Y	319.8		
Pos				

OTHER FLIGHTS

Callsign	Mission	Airframe	Freq	TCN	Grpld	Laser
Falcon 3	DEAD	2x F-16C	134.5	1/64		162X
AO	ESR01	Task	DEAD			
Viper 2	SEAD	4x F-16C	134.25	1/64		162X
AO	ESR01	Task	SEAD			
T-Rex 1	Training	2x A-10C	132.25	1/64	23	151X
AO	ESR04	Task	Coordinated Strike			
Monster 1	Training	3x A-10C	132.15	1/64	22	141X
AO	ESR04	Task	Coordinated Strike			
Rattler 6	Training	4x AH-64D	133.5	1/64		125X
AO		Task				

RADIO CHANNELS

#	Freq	Name
1		Flight/Squadron specific
2	282.8	Rovaniemi ATIS
3	282.5	Rovaniemi Ground
4	250.55	Rovaniemi Tower
5	320.7	Bodo ATIS
6	250.75	Bodo Tower
7	235.45	Kallax ATIS
8	250.3	Kallax Tower
9	265.0	Texaco-1 KC-135 Medium / Slow 71Y
10	319.8	Arco-1 KC-135 High / Fast 22Y
11	360.8	Shell-1 KC-135 MPRS High / Fast 41Y
12	304.0	CVN-71 Rough Rider (RRR) 71X
13	303.0	LHA-1 Tarawa (TWA) 79X
14	247.8	S-3B Mauler-1 (MAU) 64Y
15	347.8	Loki (E-2D)
16	348.7	Heimdall (E-3A)
17	242.17	ESR02 - CAS Range Operator
18	34.7	ESR02 - JTAC Odin
19	270.5	Blue
20	270.75	Red

RAMROD

0	1	2	3	4	5	6	7	8	9
C	O	N	F	U	S	E	D	L	Y

KTC 1400 C

	0	1	2	3	4	5	6	7	8	9
A	IBOR	VLA	NGD	YC	PQ	UHS	KM	FX	JT	WE
B	CEUQ	BJD	MOR	XK	HA	LTl	WP	SG	FV	YN
C	FRVK	OMP	TYJ	EI	CQ	ABN	GS	LH	WX	DU
D	YFWI	VEH	UQM	GC	NL	BTK	AO	JR	SD	PX
E	GISD	YEF	HMX	LJ	QC	KOP	BR	AV	WT	NU
F	KAHB	GSP	MLI	JR	DF	QNE	YU	CX	VW	TO
G	PSHM	VID	BRU	FN	KA	YXC	LQ	JW	TE	GO
H	LOER	IUW	JYQ	TB	MS	GVN	CX	FD	AH	PK
I	QYLW	IJN	BCD	TA	KX	MFV	SO	EP	HG	UR
J	UJEO	DXQ	SKV	RC	NF	ABG	MP	WY	IL	TH
K	VITG	HWK	SCP	RU	LD	FQX	MB	EJ	NO	AY
L	KTLI	UJG	DXR	WB	YO	CFV	ME	HS	PQ	NA
M	YBJR	ESN	XCV	OI	WK	GHM	PA	DU	LT	QF
N	GNAQ	IXU	KBR	JE	YO	MWT	SH	VF	CP	LD
O	QPUK	INH	SDG	EB	XA	WVJ	OL	CY	FR	TM
P	TWIA	HGN	DYM	RP	SF	KVJ	OX	BE	UL	QC
Q	RBUM	AXC	TNE	JD	PY	QKO	WI	LS	GH	FV
R	MQXA	BDK	CPW	JH	GT	LVN	RF	OY	EU	IS
S	UIOF	QBV	JAX	TR	SD	CNG	EL	PK	WY	HM
T	MYQT	OWA	PCV	RN	JD	FGH	IX	UL	KE	BS
U	WBEL	JCG	UIF	HD	MX	SOP	YR	KT	NQ	VA
V	CVTH	AGN	MLI	OU	BS	REX	WQ	DP	KF	JY
W	SJFU	WHA	IYB	CO	PT	GNM	EQ	VD	XL	RK
X	HPSD	EAJ	TVK	OM	QC	YLF	BI	GX	NU	WR
Y	EARG	SCT	WUV	FD	BH	QPL	MY	IN	JK	OX

NAVAIDS

Id	Name	Channel	Position	Elevation
BOO	Bodo	45	N67 15.838 E014 20.046	43
BNK	Banak	47	N70 03.937 E024 58.181	17
OYA	Andoya	28	N69 17.175 E016 08.658	19

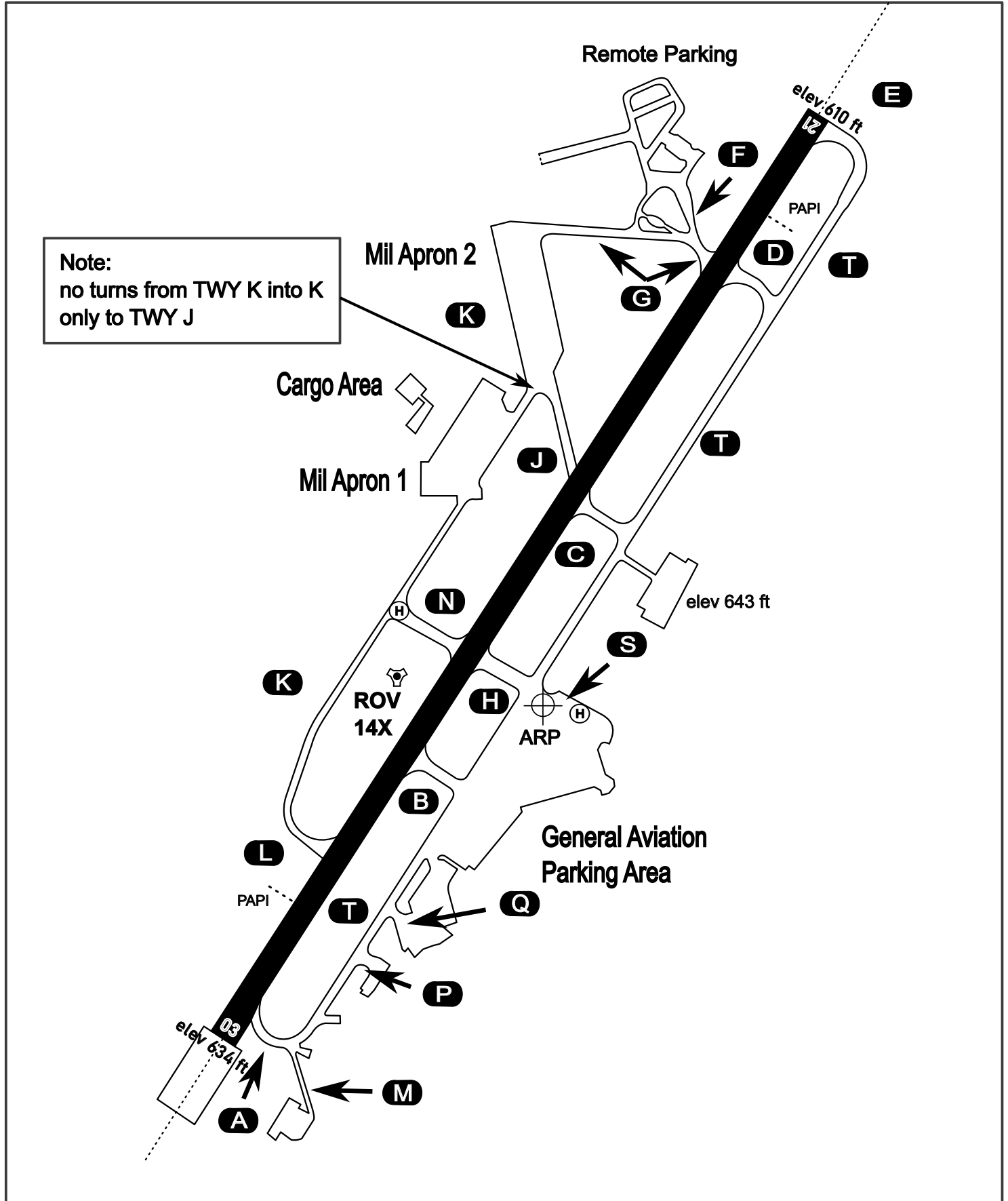
AERODROME CHART

Rovaniemi Aerodrome

ARP N66° 33' 42" E025° 49' 51"

elev 643 ft

ROVANIEMI, FINLAND

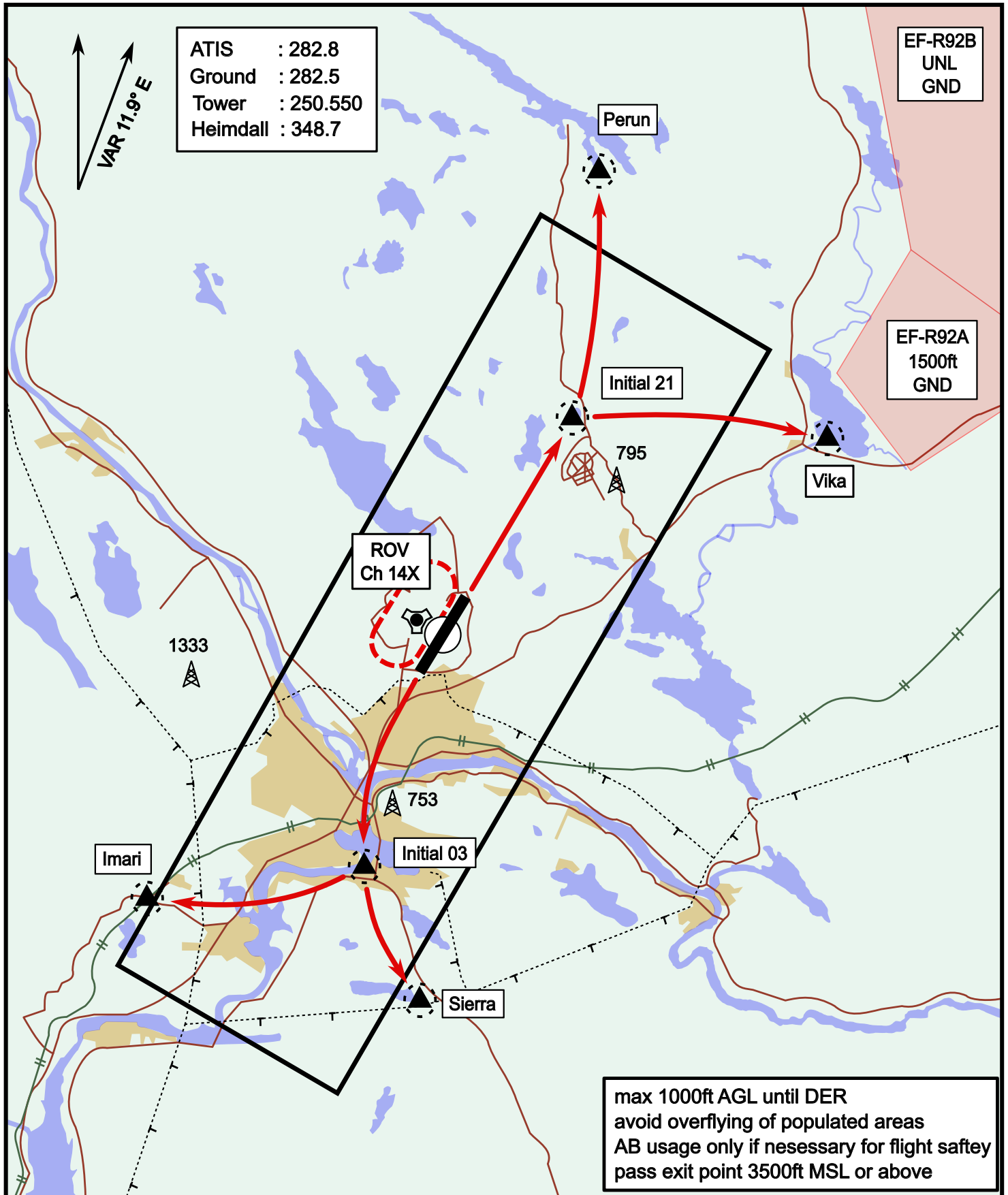


ATIS	Ground	Tower	Radar
282.800	282.500	250.550	348.700

Visual Departure Jet

elev 643 ft

Rovaniemi, Finland



ATIS : 282.8
 Ground : 282.5
 Tower : 250.550
 Heimdall : 348.7

EF-R92B
 UNL
 GND

EF-R92A
 1500ft
 GND

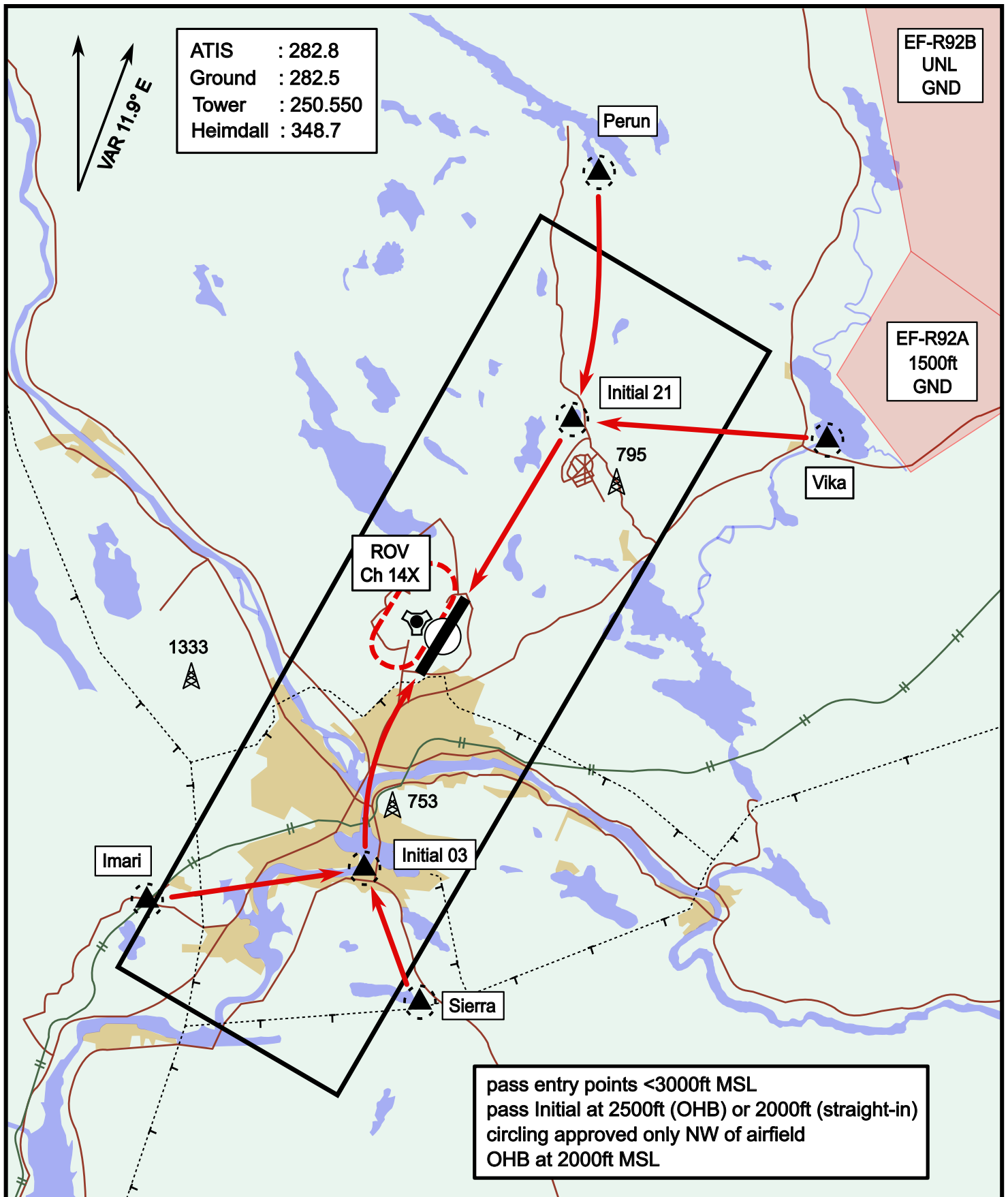
max 1000ft AGL until DER
 avoid overflying of populated areas
 AB usage only if necessary for flight safety
 pass exit point 3500ft MSL or above

Vika	N66° 37.474 / E026° 13.557	Sierra	N66° 25.711 / E025° 46.610
Perun	N66° 44.135 / E026° 01.630	Imari	N66° 28.406 / E025° 31.291
Initial21	N66° 38.421 / E025° 58.682	Initial03	N66° 28.793 / E025° 44.105

Visual Approach Jet

elev 643 ft

Rovaniemi, Finland



Vika	N66° 37.474 / E026° 13.557	Sierra	N66° 25.711 / E025° 46.610
Perun	N66° 44.135 / E026° 01.630	Imari	N66° 28.406 / E025° 31.291
Initial21	N66° 38.421 / E025° 58.682	Initial03	N66° 28.793 / E025° 44.105

NOT AVAILABLE

NOT AVAILABLE