

**MISSION DATA CARD**

OPORD		Callsign		Mission		Date/Time		
3892/2025		Falcon 3		DEAD		222000MAY25		
Task	DEAD					Freq		
AO	ESR01					134.5		
Departure				Recovery				
VFR Departure				VFR Approach				
#	Callsign		Pilot		IFF	TCN	LSR	NET
-1	Falcon 3-1		Nerkub		5431	1Y	1621	
-2	Falcon 3-2		Meteor		5432	64Y	1622	

**LOADOUT**

A/A	2xA120C, 2xA9X				GUN	100% HEI-T	
A/G	4xC105				CHF	120	
POD	HTS, A184, TGP				FLR	0	
TKS	2xFT300				FUEL	100%	

**TOLD**

	Takeoff	Target	Joker	Bingo	Land
FUEL	11169				

**AIRBASES**

	Name	TCN	ATIS	GND	TWR	RWY	Elev	ILS
Dep	Rovaniemi	14X	282.8	282.5	250.55	21	643	111.7
Arr	Rovaniemi	14X	282.8	282.5	250.55	21	643	111.7
Div	Kemi Tornio	106X			250.3	36	62	110.9

**FLIGHTPLAN**

#	Name	Navaid/Coords/DME	ALT	TOT
1	IMARI	N66 28.406 E025 31.291	4000	
2	IBSAN	N66 42.500 E025 01.083	20000	
3	NAFFI	N67 04.630 E023 11.660	20000	
4	IP	N68 26.085 E022 39.717	20000	
5	TGT	N68 27.828 E020 52.928	0	
6	NAFFI	N67 04.630 E023 11.660	20000	
7	IBSAN	N66 42.500 E025 01.083	20000	
8	PERUN	N66 44.135 E026 01.630	4000	
9	RV	N66 33.844 E025 49.712	2000	

## NOTES

Raptor 1: FAH 90° + 20(FL220) + 40(FL240) - SA3

Viper 2: FAH 90° - 20(FL220) - 40(FL240) - SA2

Falcon 3: FAH 90° (FL200)

**SUPPORT****Tanker**

Callsign	TCN	Freq	ALT	TAS
ARCO 1	22Y	319.8		
Pos				

**OTHER FLIGHTS**

Callsign	Mission	Airframe	Freq	TCN	Grpld	Laser
Raptor 1	SEAD	4x F-16C	134.0	1/64		162X
AO	ESR01	Task	SEAD			
Viper 2	SEAD	4x F-16C	134.25	1/64		162X
AO	ESR01	Task	SEAD			
T-Rex 1	Training	2x A-10C	132.25	1/64	23	151X
AO	ESR04	Task	Coordinated Strike			
Monster 1	Training	3x A-10C	132.15	1/64	22	141X
AO	ESR04	Task	Coordinated Strike			
Rattler 6	Training	4x AH-64D	133.5	1/64		125X
AO		Task				

## RADIO CHANNELS

#	Freq	Name
1		Flight/Squadron specific
2	282.8	Rovaniemi ATIS
3	282.5	Rovaniemi Ground
4	250.55	Rovaniemi Tower
5	320.7	Bodo ATIS
6	250.75	Bodo Tower
7	235.45	Kallax ATIS
8	250.3	Kallax Tower
9	265.0	Texaco-1   KC-135   Medium / Slow   71Y
10	319.8	Arco-1   KC-135   High / Fast   22Y
11	360.8	Shell-1   KC-135 MPRS   High / Fast   41Y
12	304.0	CVN-71 Rough Rider (RRR)   71X
13	303.0	LHA-1 Tarawa (TWA)   79X
14	247.8	S-3B Mauler-1 (MAU)  64Y
15	347.8	Loki (E-2D)
16	348.7	Heimdall (E-3A)
17	242.17	ESR02 - CAS Range Operator
18	34.7	ESR02 - JTAC Odin
19	270.5	Blue
20	270.75	Red

**RAMROD**

0	1	2	3	4	5	6	7	8	9
C	O	N	F	U	S	E	D	L	Y

**KTC 1400 C**

	0	1	2	3	4	5	6	7	8	9
A	IBOR	VLA	NGD	YC	PQ	UHS	KM	FX	JT	WE
B	CEUQ	BJD	MOR	XK	HA	LTl	WP	SG	FV	YN
C	FRVK	OMP	TYJ	EI	CQ	ABN	GS	LH	WX	DU
D	YFWI	VEH	UQM	GC	NL	BTK	AO	JR	SD	PX
E	GISD	YEF	HMX	LJ	QC	KOP	BR	AV	WT	NU
F	KAHB	GSP	MLI	JR	DF	QNE	YU	CX	VW	TO
G	PSHM	VID	BRU	FN	KA	YXC	LQ	JW	TE	GO
H	LOER	IUW	JYQ	TB	MS	GVN	CX	FD	AH	PK
I	QYLW	IJN	BCD	TA	KX	MFV	SO	EP	HG	UR
J	UJEO	DXQ	SKV	RC	NF	ABG	MP	WY	IL	TH
K	VITG	HWK	SCP	RU	LD	FQX	MB	EJ	NO	AY
L	KTLI	UJG	DXR	WB	YO	CFV	ME	HS	PQ	NA
M	YBJR	ESN	XCV	OI	WK	GHM	PA	DU	LT	QF
N	GNAQ	IXU	KBR	JE	YO	MWT	SH	VF	CP	LD
O	QPUK	INH	SDG	EB	XA	WVJ	OL	CY	FR	TM
P	TWIA	HGN	DYM	RP	SF	KVJ	OX	BE	UL	QC
Q	RBUM	AXC	TNE	JD	PY	QKO	WI	LS	GH	FV
R	MQXA	BDK	CPW	JH	GT	LVN	RF	OY	EU	IS
S	UIOF	QBV	JAX	TR	SD	CNG	EL	PK	WY	HM
T	MYQT	OWA	PCV	RN	JD	FGH	IX	UL	KE	BS
U	WBEL	JCG	UIF	HD	MX	SOP	YR	KT	NQ	VA
V	CVTH	AGN	MLI	OU	BS	REX	WQ	DP	KF	JY
W	SJFU	WHA	IYB	CO	PT	GNM	EQ	VD	XL	RK
X	HPSD	EAJ	TVK	OM	QC	YLF	BI	GX	NU	WR
Y	EARG	SCT	WUV	FD	BH	QPL	MY	IN	JK	OX

**NAVAIDS**

Id	Name	Channel	Position	Elevation
BOO	Bodo	45	N67 15.838 E014 20.046	43
BNK	Banak	47	N70 03.937 E024 58.181	17
OYA	Andoya	28	N69 17.175 E016 08.658	19



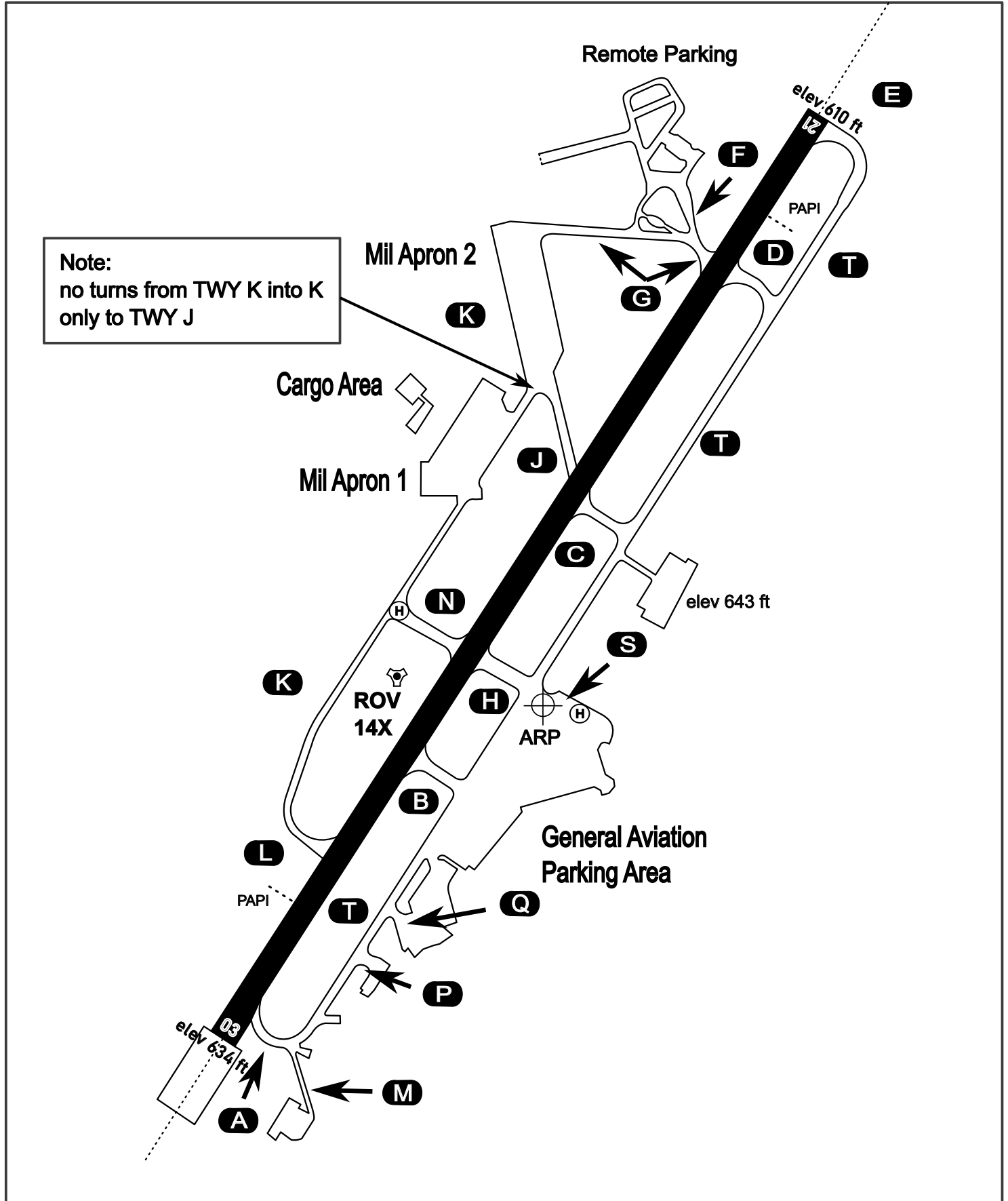
# AERODROME CHART

Rovaniemi Aerodrome

ARP N66° 33' 42" E025° 49' 51"

elev 643 ft

## ROVANIEMI, FINLAND

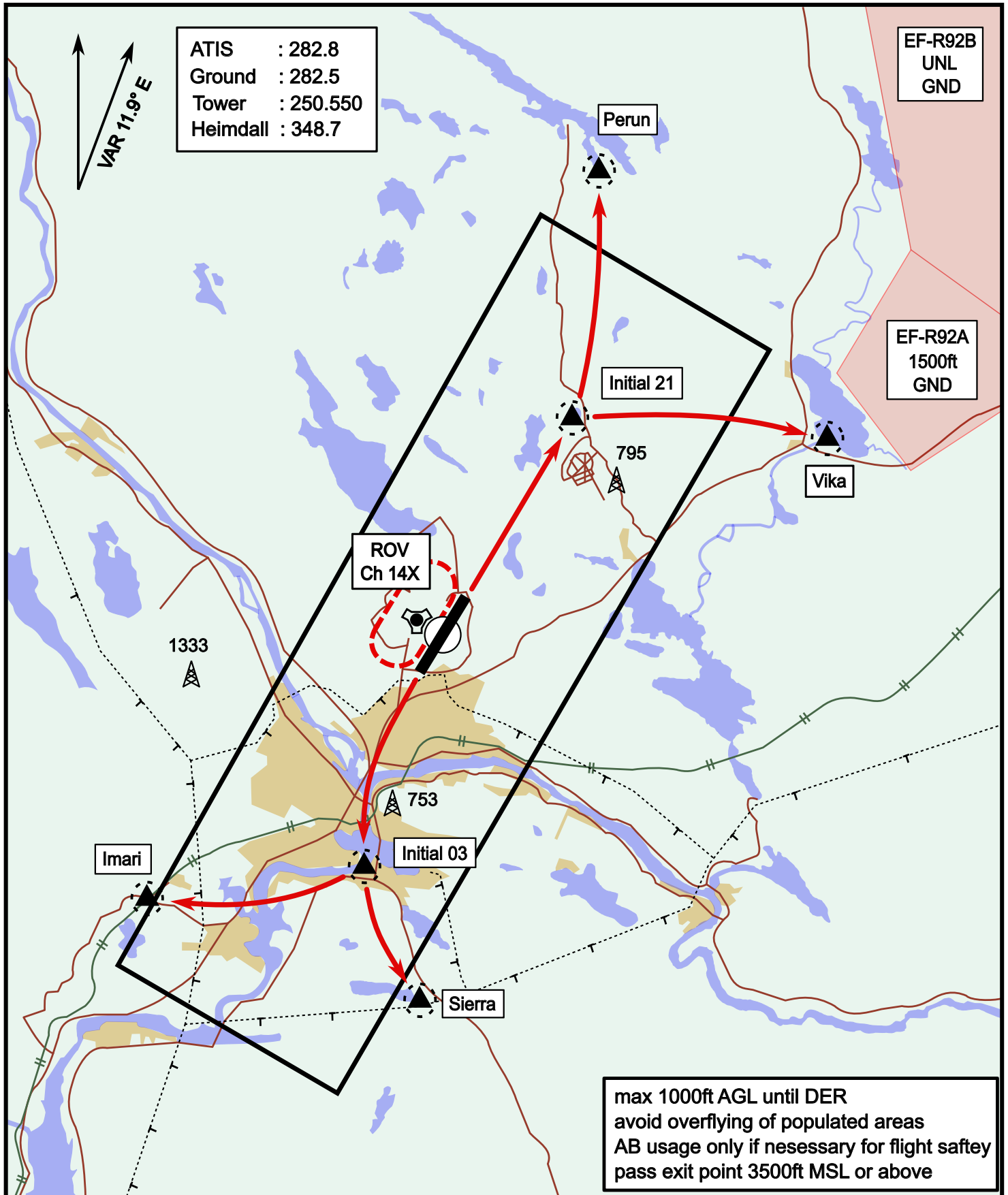


ATIS	Ground	Tower	Radar
282.800	282.500	250.550	348.700

# Visual Departure Jet

elev 643 ft

# Rovaniemi, Finland

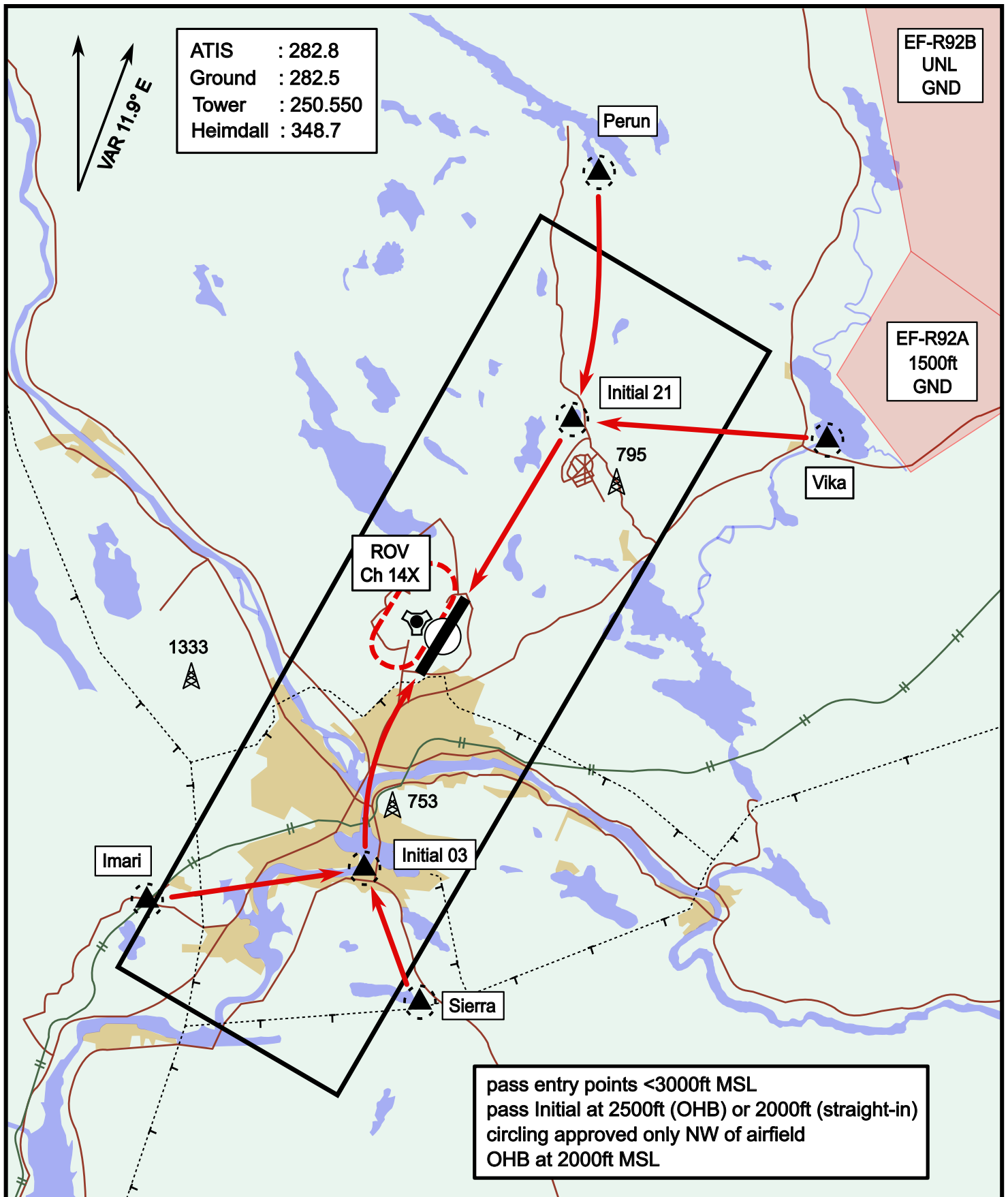


Vika	N66° 37.474 / E026° 13.557	Sierra	N66° 25.711 / E025° 46.610
Perun	N66° 44.135 / E026° 01.630	Imari	N66° 28.406 / E025° 31.291
Initial21	N66° 38.421 / E025° 58.682	Initial03	N66° 28.793 / E025° 44.105

# Visual Approach Jet

elev 643 ft

# Rovaniemi, Finland



Vika	N66° 37.474 / E026° 13.557	Sierra	N66° 25.711 / E025° 46.610
Perun	N66° 44.135 / E026° 01.630	Imari	N66° 28.406 / E025° 31.291
Initial21	N66° 38.421 / E025° 58.682	Initial03	N66° 28.793 / E025° 44.105

**NOT AVAILABLE**

**NOT AVAILABLE**