

**MISSION DATA CARD**

OPORD		Callsign		Mission		Date/Time		
3884/2025		Raptor 1		AR		181935MAY25		
Task	AAR / Formation					Freq		
AO						134.0		
Departure				Recovery				
VFR Departure				VFR Approach				
#	Callsign		Pilot		IFF	TCN	LSR	NET
-1	Raptor 1-1		Beethovenz		1611	1Y	1621	

**LOADOUT**

A/A	2xA120C, 2xA9X				GUN	100% HEI-T	
A/G					CHF	60	
POD	HTS, TGP				FLR	60	
TKS					FUEL	100%	

**TOLD**

	Takeoff	Target	Joker	Bingo	Land		
FUEL	7163		3500	2500			

**AIRBASES**

	Name	TCN	ATIS	GND	TWR	RWY	Elev	ILS
Dep	Rovaniemi	14X	282.8	282.5	250.55	21	643	111.7
Arr	Rovaniemi	14X	282.8	282.5	250.55	21	643	111.7

**FLIGHTPLAN**

#	Name	Navaid/Coords/DME	ALT	TOT
1	IMARI	N66 28.406 E025 31.291	5000	
2	IBSAN	N66 42.500 E025 01.083	20000	
3	NAFFI	N67 04.630 E023 11.660	20000	
4	AR.ARCO1	N67 43.144 E024 17.962	20000	
5	EVOLA	N68 30.860 E024 58.410	20000	
6	ROTKO	N66 57.633 E025 57.667	20000	
7	PERUN	N66 44.135 E026 01.630	5000	
8	Rovaniemi	N66 33.877 E025 49.763	1000	

**SUPPORT****Tanker**

Callsign	TCN	Freq	ALT	TAS
ARCO 1	22Y	319.8		
Pos				

## RADIO CHANNELS

#	Freq	Name
1		Flight/Squadron specific
2	282.8	Rovaniemi ATIS
3	282.5	Rovaniemi Ground
4	250.55	Rovaniemi Tower
5	320.7	Bodo ATIS
6	250.75	Bodo Tower
7	235.45	Kallax ATIS
8	250.3	Kallax Tower
9	265.0	Texaco-1   KC-135   Medium / Slow   71Y
10	319.8	Arco-1   KC-135   High / Fast   22Y
11	360.8	Shell-1   KC-135 MPRS   High / Fast   41Y
12	304.0	CVN-71 Rough Rider (RRR)   71X
13	303.0	LHA-1 Tarawa (TWA)   79X
14	247.8	S-3B Mauler-1 (MAU)  64Y
15	347.8	Loki (E-2D)
16	348.7	Heimdall (E-3A)
17	242.17	ESR02 - CAS Range Operator
18	34.7	ESR02 - JTAC Odin
19	270.5	Blue
20	270.75	Red

**RAMROD**

0	1	2	3	4	5	6	7	8	9
U	N	S	O	C	I	A	B	L	E

**KTC 1400 C**

	0	1	2	3	4	5	6	7	8	9
A	QCDE	WKI	USJ	OA	GP	LRN	MY	XB	HT	FV
B	AMFB	OGR	UTP	IE	DQ	WLJ	CH	SX	YK	NV
C	MIUE	OAR	KGN	TH	WP	JCB	LD	SF	QY	VX
D	IMRN	ESW	BKJ	QY	CL	UOP	XF	GH	VD	AT
E	AVSI	ECJ	WYM	DN	GQ	RKL	BT	FX	UP	OH
F	XENT	KRQ	YUV	SJ	HF	WCI	GA	BD	OM	PL
G	UNBC	MVP	AXD	KH	GW	JYQ	OS	TI	FE	LR
H	TEWH	XVR	SQJ	NM	CP	UAO	LF	YG	BK	DI
I	FWPC	XNQ	SRM	UV	AJ	BLH	EY	KG	DT	IO
J	ADOP	FUJ	LGR	QX	NH	VWS	YI	EK	CB	MT
K	CJME	AWG	XVB	HT	PN	ODS	FQ	LU	IY	RK
L	QILR	JGW	UCA	NP	MY	FHB	XE	ST	DO	KV
M	CFMJ	SRK	GXB	QV	HI	TUP	LA	DN	WE	YO
N	SIPX	EFR	QVO	MG	TK	DYB	HN	WL	JC	AU
O	KDSU	OEX	RTP	QG	FI	NJV	MB	WA	HC	LY
P	ATER	OGJ	XVF	QS	YD	BLK	CU	WN	HM	IP
Q	NUXM	EHV	PWB	LQ	OF	RKI	JA	CS	GT	DY
R	PAEU	XRB	DKS	OL	TM	HCV	GW	YQ	NI	FJ
S	CAGS	NER	WOB	IM	YU	XJT	QK	PH	FD	LV
T	KVGT	JCH	PWQ	IA	UR	NYF	MX	OL	BD	SE
U	HOIP	AJK	BQC	NW	MR	GDU	LE	YS	TV	FX
V	LTCE	HQG	KIY	JA	DW	SVF	UB	ON	RP	XM
W	VSDB	YRG	TMF	OX	KP	ILE	QU	AH	JN	CW
X	OVFE	QKU	THM	LI	WJ	YRP	NC	BS	XA	GD
Y	QADF	KHR	OES	UV	PY	CTG	WL	IJ	BM	NX

**NAVAIDS**

Id	Name	Channel	Position	Elevation
BOO	Bodo	45	N67 15.838 E014 20.046	43
BNK	Banak	47	N70 03.937 E024 58.181	17
OYA	Andoya	28	N69 17.175 E016 08.658	19

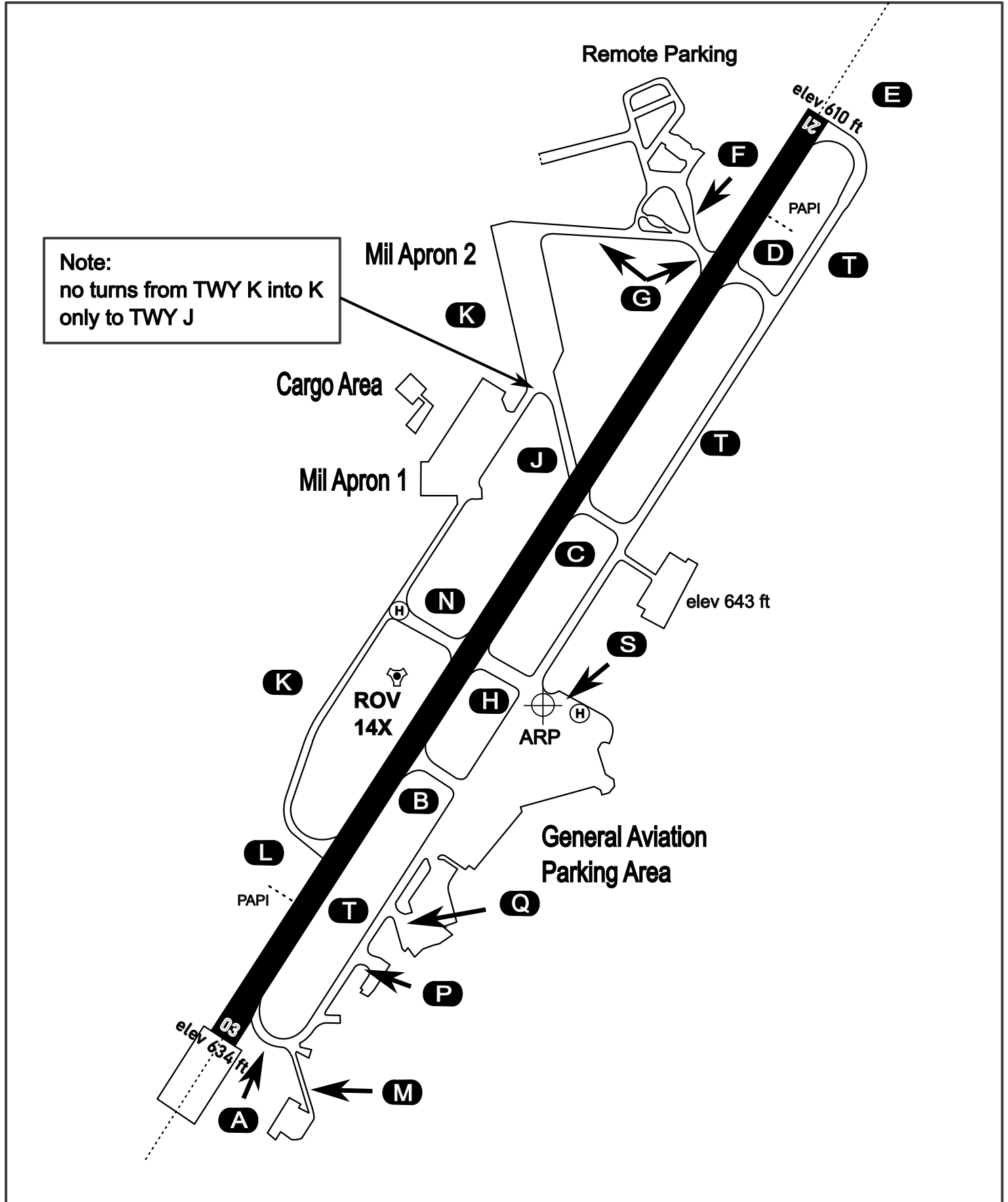
# AERODROME CHART

Rovaniemi Aerodrome

ARP N66° 33' 42" E025° 49' 51"

elev 643 ft

## ROVANIEMI, FINLAND

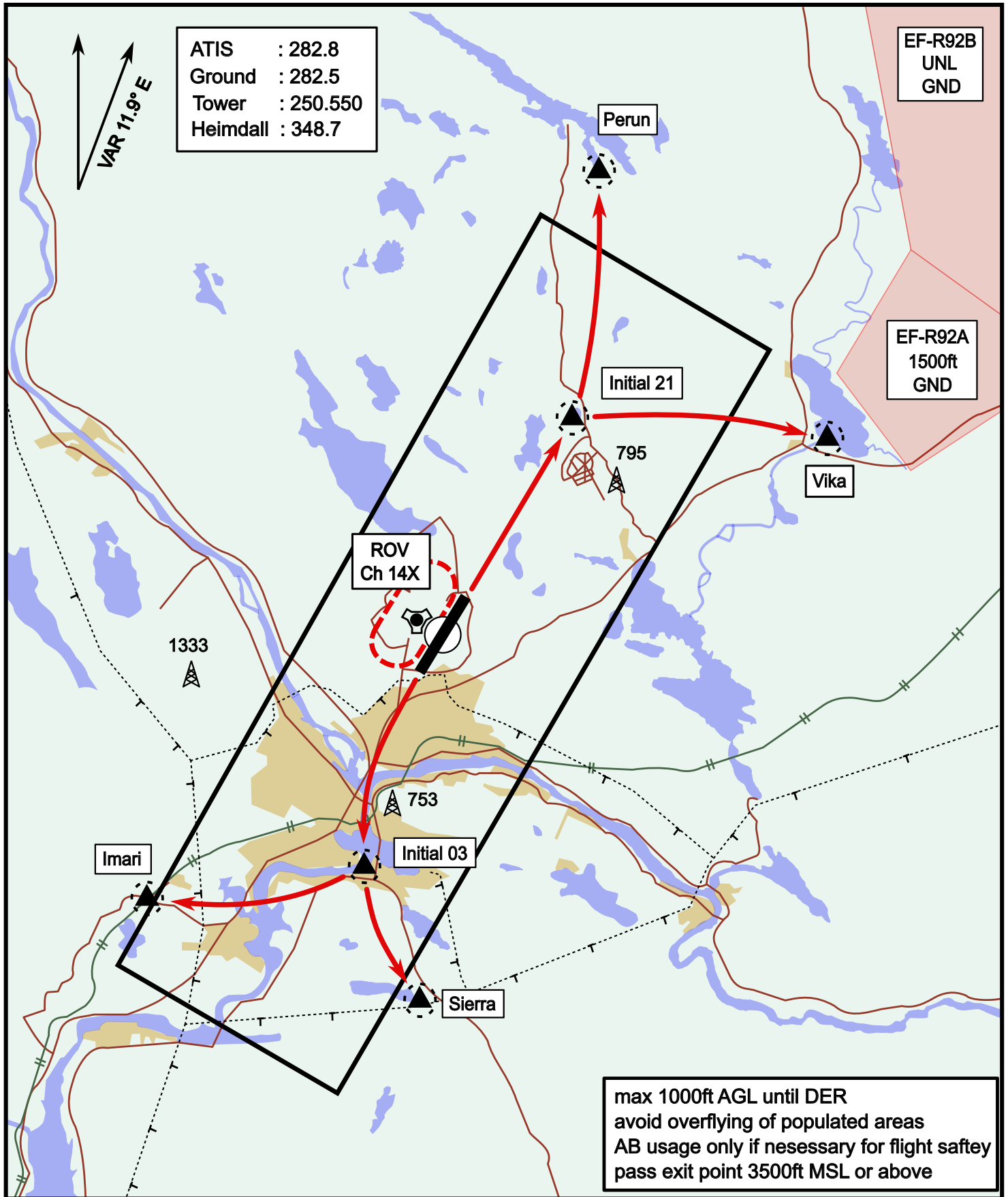


ATIS	Ground	Tower	Radar
282.800	282.500	250.550	348.700

# Visual Departure Jet

elev 643 ft

# Rovaniemi, Finland



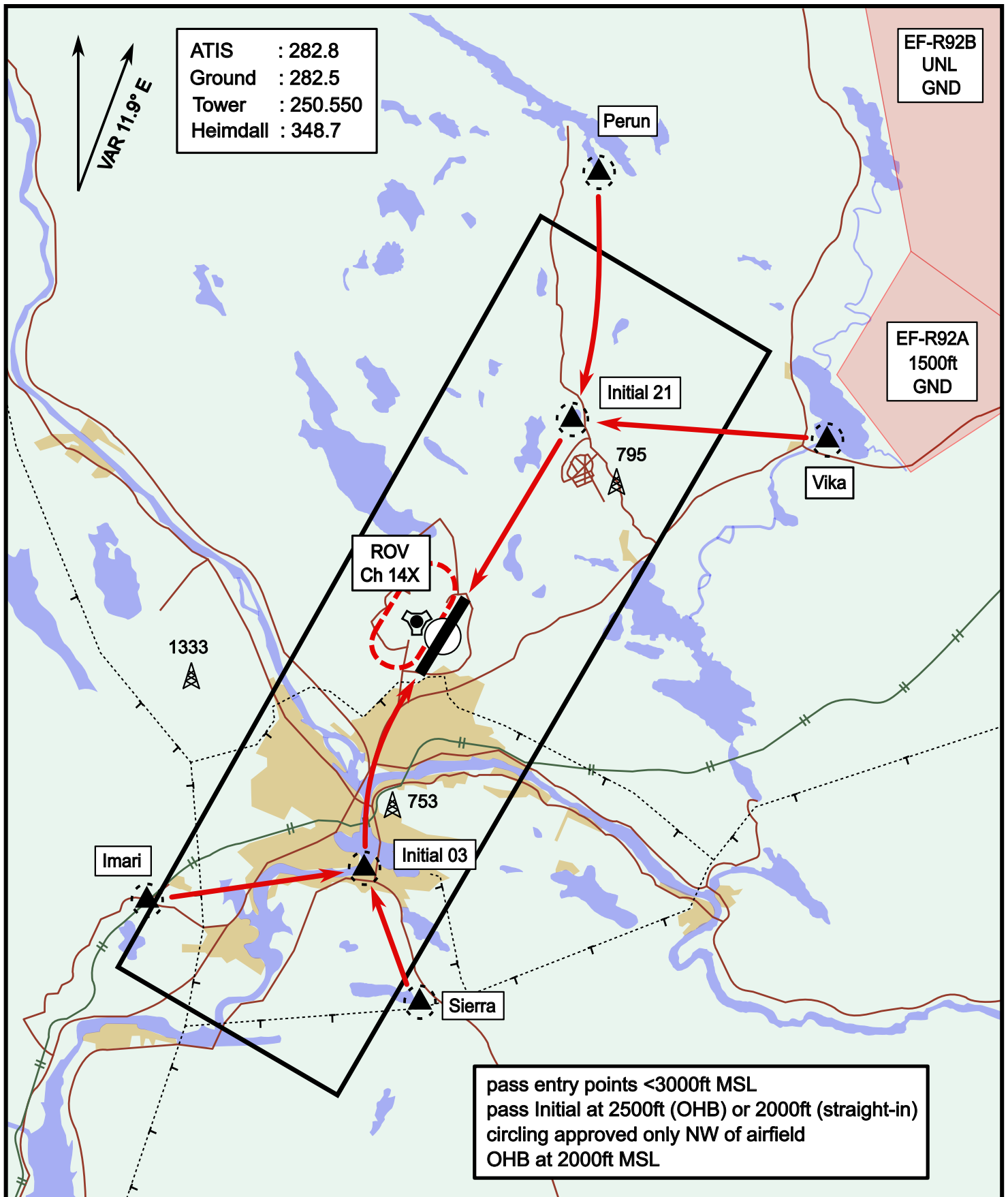
Vika	N66° 37.474 / E026° 13.557	Sierra	N66° 25.711 / E025° 46.610
Perun	N66° 44.135 / E026° 01.630	Imari	N66° 28.406 / E025° 31.291
Initial21	N66° 38.421 / E025° 58.682	Initial03	N66° 28.793 / E025° 44.105



# Visual Approach Jet

elev 643 ft

# Rovaniemi, Finland



Vika	N66° 37.474 / E026° 13.557	Sierra	N66° 25.711 / E025° 46.610
Perun	N66° 44.135 / E026° 01.630	Imari	N66° 28.406 / E025° 31.291
Initial21	N66° 38.421 / E025° 58.682	Initial03	N66° 28.793 / E025° 44.105