

MISSION DATA CARD

OPORD		Callsign		Mission		Date/Time	
3881/2025		Raptor 1		SEAD		192000MAY25	
Task	SEAD					Freq	
AO	ESR01					134.0	
Departure				Recovery			
VFR Departure				VFR Approach			
#	Callsign	Pilot		IFF	TCN	LSR	NET
-1	Raptor 1-1	Newbie		1611	1Y	1621	
-2	Raptor 1-2	Beathovenz		1612	64Y	1622	
-3	Raptor 1-3	Meteor		1613	64X	1623	

LOADOUT

A/A	2xA120C, 2xA9X				GUN	100% HEI-T	
A/G	4xA88C				CHF	120	
POD	HTS, TGP				FLR	0	
TKS	FT300				FUEL	100%	

TOLD

	Takeoff	Target	Joker	Bingo	Land
FUEL	9166				

AIRBASES

	Name	TCN	ATIS	GND	TWR	RWY	Elev	ILS
Dep	Rovaniemi	14X	282.8	282.5	250.55	21	643	111.7
Arr	Rovaniemi	14X	282.8	282.5	250.55	21	643	111.7
Div	Kemi Tornio	106X			250.3	36	62	110.9

FLIGHTPLAN

#	Name	Navaid/Coords/DME	ALT	TOT
1	IMARI	N66 28.406 E025 31.291	4000	
2	IBSAN	N66 42.500 E025 01.083	20000	
3	NAFFI	N67 04.630 E023 11.660	20000	
4	IP	N67 59.983 E022 37.984	20000	
5	TGT	N68 27.828 E020 52.928	0	
6	SEPJA	N67 27.300 E021 12.080	20000	
7	IBSAN	N66 42.500 E025 01.083	20000	
8	PERUN	N66 44.135 E026 01.630	4000	
9	RV	N66 33.844 E025 49.712	2000	

NOTES

Raptor 1: TGT R155/R175

Falcon 3: TGT R135

Viper 2: TGT R115/R95

SUPPORT**Tanker**

Callsign	TCN	Freq	ALT	TAS
ARCO 1	22Y	319.8		
Pos				

OTHER FLIGHTS

Callsign	Mission	Airframe	Freq	TCN	Grpld	Laser
Viper 2	SEAD	4x F-16C	134.25	1/64		162X
AO	ESR01	Task	SEAD			
Falcon 3	DEAD	2x F-16C	134.5	1/64		162X
AO	ESR01	Task	DEAD			
T-Rex 1	Training	2x A-10C	132.25	1/64	23	151X
AO	ESR04	Task	Coordinated Strike			
Monster 1	Training	3x A-10C	132.15	1/64	22	141X
AO	ESR04	Task	Coordinated Strike			
Rattler 1	Training	4x AH-64D	133.5	1/64		125X
AO	R92D	Task				
Tiger 1	Training	2x F/A-18C	261.15	1/64		155X
AO	ESR02	Task	BFM			
BamBam 2	Training	1x AH-64D	133.25	1/64		170X
AO	Rovaniemi, FARP Kimi	Task				
Edelweiss	Training	2x F/A-18C	264.05	1/64		170X
AO		Task	Training - Airwork at ESR06			

RADIO CHANNELS

#	Freq	Name
1		Flight/Squadron specific
2	282.8	Rovaniemi ATIS
3	282.5	Rovaniemi Ground
4	250.55	Rovaniemi Tower
5	320.7	Bodo ATIS
6	250.75	Bodo Tower
7	235.45	Kallax ATIS
8	250.3	Kallax Tower
9	265.0	Texaco-1 KC-135 Medium / Slow 71Y
10	319.8	Arco-1 KC-135 High / Fast 22Y
11	360.8	Shell-1 KC-135 MPRS High / Fast 41Y
12	304.0	CVN-71 Rough Rider (RRR) 71X
13	303.0	LHA-1 Tarawa (TWA) 79X
14	247.8	S-3B Mauler-1 (MAU) 64Y
15	347.8	Loki (E-2D)
16	348.7	Heimdall (E-3A)
17	242.17	ESR02 - CAS Range Operator
18	34.7	ESR02 - JTAC Odin
19	270.5	Blue
20	270.75	Red

RAMROD

0	1	2	3	4	5	6	7	8	9
B	O	Y	F	R	I	E	N	D	S

KTC 1400 C

	0	1	2	3	4	5	6	7	8	9
A	DJXI	BLU	VOE	RN	HT	CAY	QP	SM	KW	FG
B	SARU	JID	QPE	XN	LT	BFC	OK	HW	YG	MV
C	JUBK	RVY	PEG	QM	XF	WCA	TO	NL	ID	SH
D	OBMT	IJH	FGE	SR	UC	QYD	PX	VN	WK	LA
E	FWCU	RDH	VOI	NE	LM	XSQ	JK	PT	YG	AB
F	HCNW	BET	DMF	UY	GX	LVP	OK	IJ	AQ	SR
G	JCHA	LBQ	WMV	KY	DP	SUN	GF	TE	OX	RI
H	VFOE	KRN	MAQ	TU	XH	PDL	GY	CJ	WB	IS
I	ICBA	FQP	WJG	DH	KR	VSO	ET	UY	LX	NM
J	ADXJ	MJL	PUT	GR	FW	YON	QB	KS	EC	VH
K	VCUR	OWA	SPX	YK	LJ	HIB	FN	TD	EM	GQ
L	DARC	GHW	FBI	PS	KM	NTX	VO	JQ	UY	LE
M	KOJH	MSG	FYC	VX	RQ	TPI	UA	BL	WD	NE
N	EUXB	YJA	SMV	IO	DL	WKQ	GT	FC	NP	HR
O	UDKI	OSN	EPA	XB	HJ	FRC	WM	GT	YL	VQ
P	YKNO	QLW	SHV	GB	CM	JXF	EA	RD	PI	TU
Q	GRIQ	JEC	PVT	MK	XH	SQB	UW	YD	NL	FA
R	FCES	YQH	WIK	MR	PL	GJO	TX	UB	VN	AD
S	WQBF	CHD	EIX	NT	RG	AJY	OV	UM	KP	LS
T	YJTN	QBF	WKC	ME	PA	RGH	IX	SU	DO	VL
U	RYKN	STX	LOW	PB	FM	VCD	EU	IG	JQ	AH
V	HQRT	VOI	PCG	ED	SN	KFW	JA	YL	UB	XM
W	AIJM	RUG	CNB	TW	HF	YLS	DK	EP	VX	OQ
X	SJPF	WTY	UXQ	MG	BR	KOA	VE	DI	CH	LN
Y	ADMH	CIS	RET	FK	ON	WXJ	BY	QL	PU	VG

NAVAIDS

Id	Name	Channel	Position	Elevation
BOO	Bodo	45	N67 15.838 E014 20.046	43
BNK	Banak	47	N70 03.937 E024 58.181	17
OYA	Andoya	28	N69 17.175 E016 08.658	19

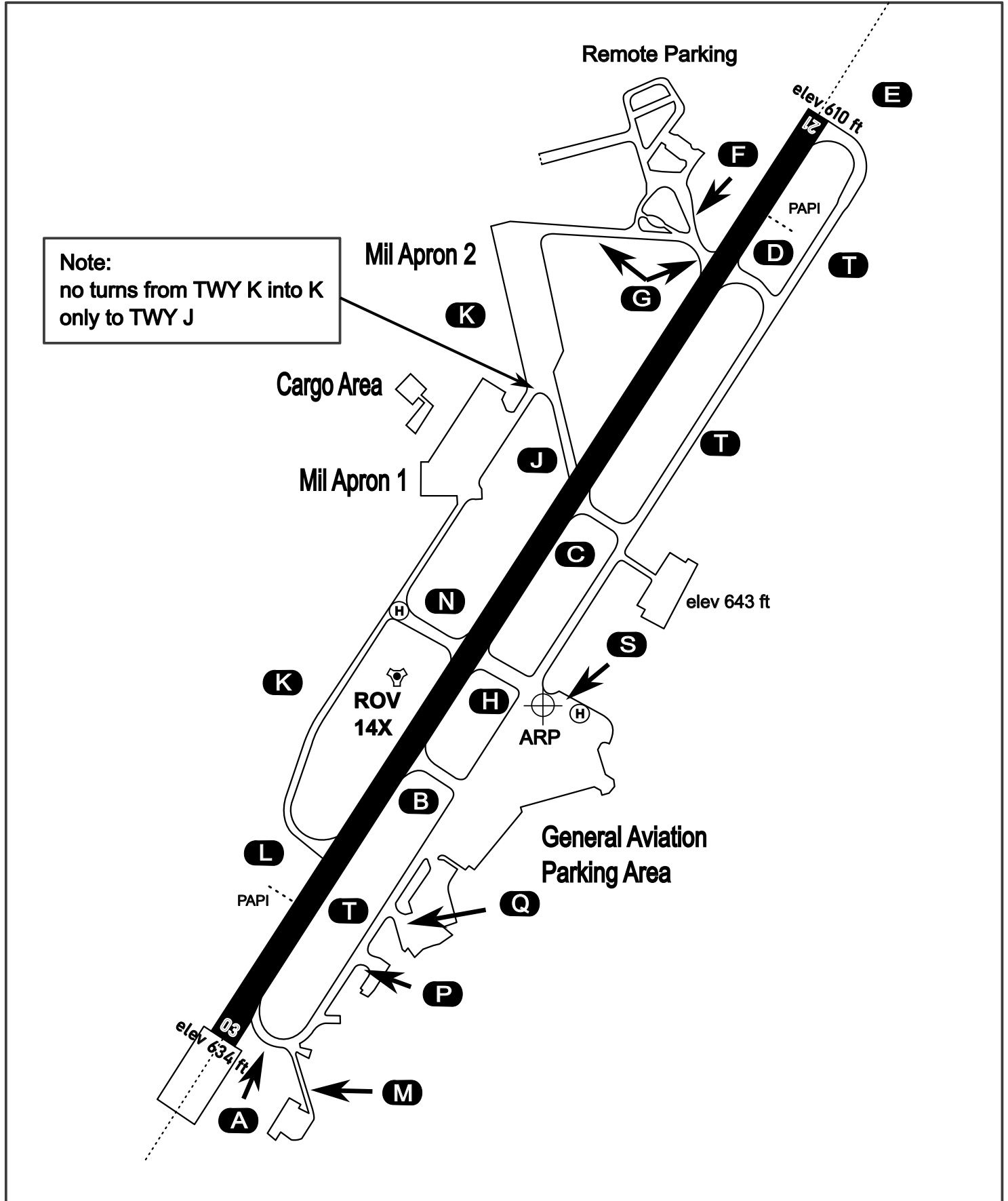
AERODROME CHART

Rovaniemi Aerodrome

ARP N66° 33' 42" E025° 49' 51"

elev 643 ft

ROVANIEMI, FINLAND

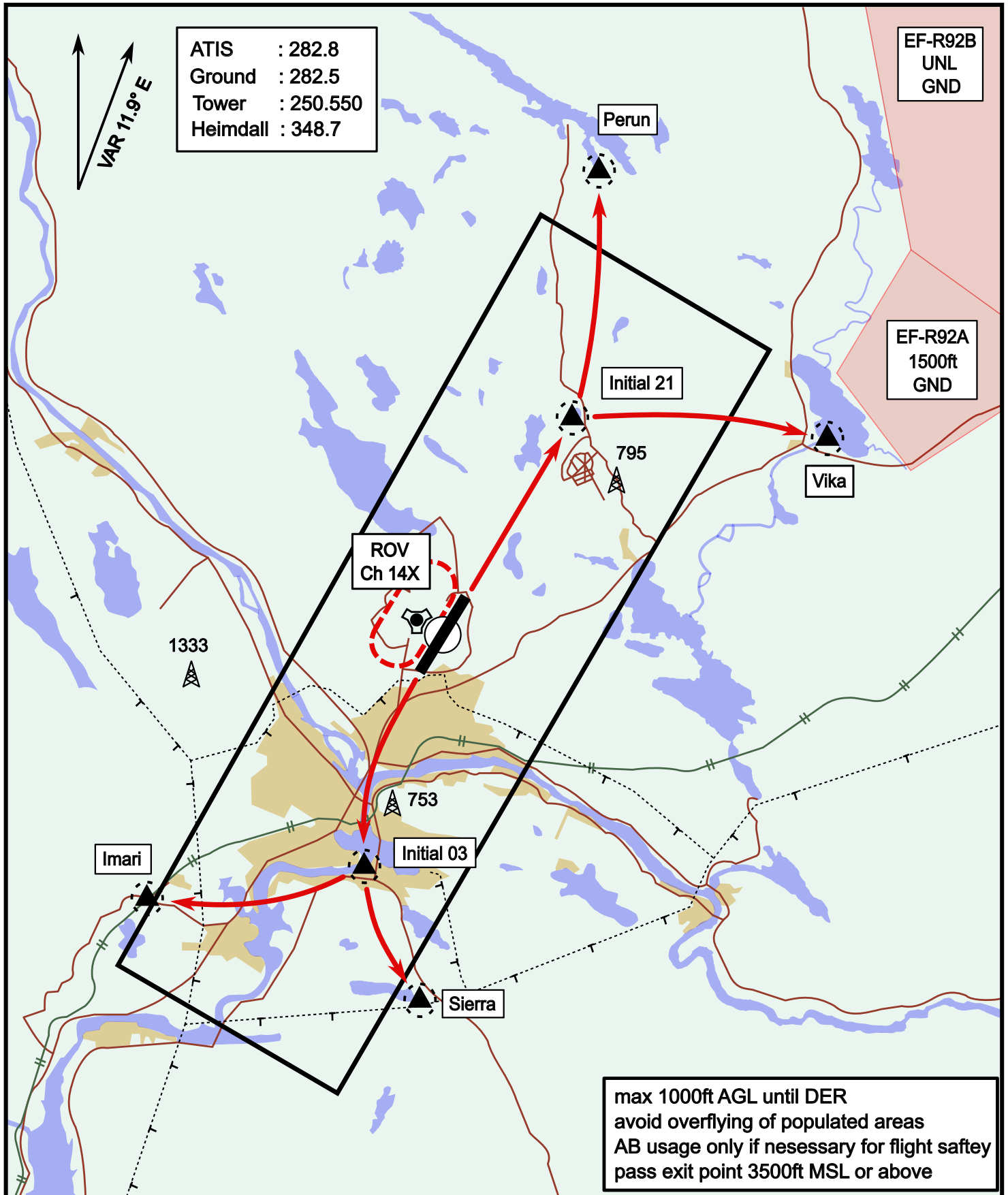


ATIS	Ground	Tower	Radar
282.800	282.500	250.550	348.700

Visual Departure Jet

elev 643 ft

Rovaniemi, Finland

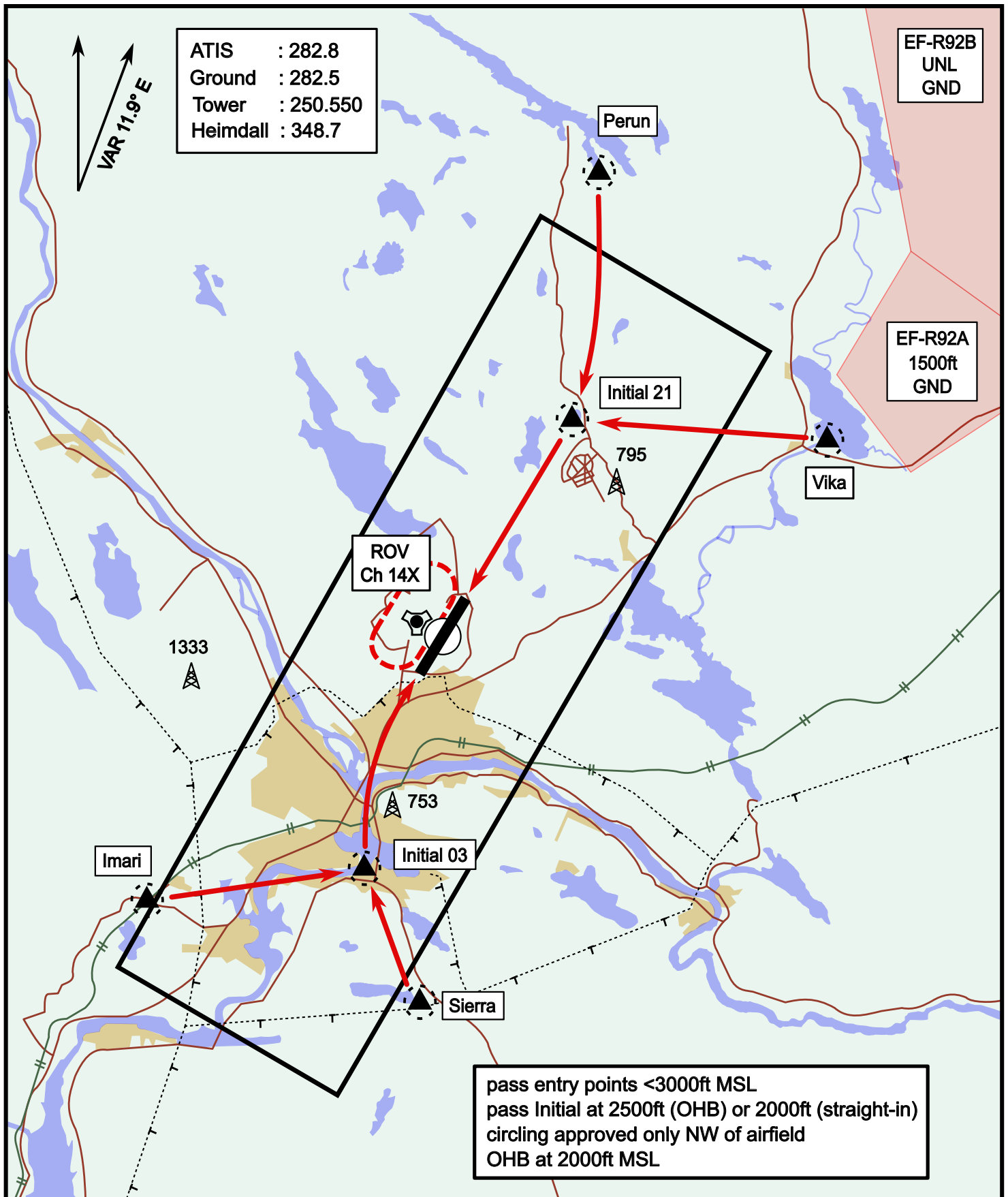


Vika	N66° 37.474 / E026° 13.557	Sierra	N66° 25.711 / E025° 46.610
Perun	N66° 44.135 / E026° 01.630	Imari	N66° 28.406 / E025° 31.291
Initial21	N66° 38.421 / E025° 58.682	Initial03	N66° 28.793 / E025° 44.105

Visual Approach Jet

elev 643 ft

Rovaniemi, Finland



Vika	N66° 37.474 / E026° 13.557	Sierra	N66° 25.711 / E025° 46.610
Perun	N66° 44.135 / E026° 01.630	Imari	N66° 28.406 / E025° 31.291
Initial21	N66° 38.421 / E025° 58.682	Initial03	N66° 28.793 / E025° 44.105

NOT AVAILABLE

NOT AVAILABLE