

MISSION DATA CARD

OPORD		Callsign		Mission		Date/Time		
3865/2025		Tiger 1		Training		121940MAY25		
Task	Cruise Missile					Freq		
AO	ESR03					261.15		
Departure				Recovery				
CAT				VFR Approach				
#	Callsign		Pilot		IFF	TCN	LSR	NET
-1	Tiger 1-1		Kosmoss		1011	1Y	1551	
-2	Tiger 1-2		Cloud		1012	64Y	1552	
-3	Tiger 1-3		Prinz		1013	64X	1553	
-4	Tiger 1-4		Hawk		1014	1X	1554	

LOADOUT

A/A	2xA9X, A120C				GUN	100% HEI-T	
A/G	3xA84H				CHF	80	
POD	TGP, AWW-13 Datalink Pod				FLR	40	
TKS	FPU-8A				FUEL	100%	

TOLD

	Takeoff	Target	Joker	Bingo	Land		
FUEL	13047			4000			

AIRBASES

	Name	TCN	ATIS	GND	TWR	RWY	Elev	ILS
Dep	CVN-71 USS Theodore Roosevelt	71X		ICLS 7	304.0			
Arr	Rovaniemi	14X	282.8	282.5	250.55	21	643	111.7
Div	CVN-71 USS Theodore Roosevelt	71X		ICLS 7	304.0			

FLIGHTPLAN

#	Name	Navaid/Coords/DME	ALT	TOT
1	ORTEN	N70 00.140 E014 59.450	32000	
2	LURAP	N69 05.560 E018 15.890	32000	
3	SEPJA	N67 27.300 E021 12.080	32000	
4	NAFFI	N67 04.630 E023 11.660	32000	
5	T.ESR03.07	N66 04.308 E023 15.042	236	
6	T.ESR03.07-AD Ammunition Depot	N66 04.358 E023 15.136	235	
7	T.ESR03.07-CT Chemical Tank	N66 04.371 E023 15.059	232	
8	T.ESR03.07-FT01 Fuel Tank 01	N66 04.366 E023 15.009	231	
9	T.ESR03.07-FT02 Fuel Tank 02	N66 04.347 E023 15.008	232	
10	T.ESR03.07-FT03 Fuel Tank03	N66 04.366 E023 14.983	230	
11	T.ESR03.07-FT04 Fuel Tank 04	N66 04.347 E023 14.982	231	
12	T.ESR03.07-FT05 Fuel Tank 05	N66 04.367 E023 14.958	229	
13	T.ESR03.07-FT06 Fuel Tank 06	N66 04.348 E023 14.957	230	
14	T.ESR03.07-TT Transmission Tower	N66 04.287 E023 15.111	240	
15	T.ESR03.07-HQ Headquarter	N66 04.257 E023 15.125	243	
16	T.ESR03.07- BU Bunker	N66 04.280 E023 15.006	237	
17	IMARI	N66 28.406 E025 31.291	3000	
18	RVNInit03	N66 28.793 E025 44.105	2500	
19	PERUN	N66 44.135 E026 01.630	3000	
20	RVNInit21	N66 38.642 E025 58.682	2500	

COMMS

Radio	Usage
1	#12(Mother) 304.0 #16 (Haimdall) 348.7 #12(Mother) 304.0
2	261.15
3	Mids A 22
4	Mids B 44

SUPPORT**Tanker**

Callsign	TCN	Freq	ALT	TAS
SHELL 1	41Y	360.8		

Pos

AWACS

Callsign	Freq	ALT	Pos
HEIMDALL	348.7		
LOKI	347.8		

OTHER FLIGHTS

Callsign	Mission	Airframe	Freq	TCN	Grpld	Laser
Panther 3	Training	2x F/A-18C	264.15	1/64	1	171X
AO	AG Range R93A	Task	SLAM Attack			
Raptor 1	SEAD	4x F-16C	134.0	1/64		162X
AO	ESR01/SA10	Task	SEAD			
Viper 2	DEAD	4x F-16C	134.25	2/65		162X
AO	ESR01/SA10	Task	DEAD			
Rattler 1	Training	4x AH-64D	133.5	1/64		125X
AO	R92A R92B R92C	Task				
T-Rex 1	Training	4x A-10C	132.25	1/64	25	165X
AO	ESR04	Task	AG Training			
Nazgul 6	Training	4x F-15E	262.45	1/64		156X
AO	ESR02	Task	WVR Training			
Tiger 2	Training	3x F/A-18C	261.15	1/64		155X
AO	ESR03	Task	Cruise Missile			

RADIO CHANNELS

#	Freq	Name
1		Flight/Squadron specific
2	282.8	Rovaniemi ATIS
3	282.5	Rovaniemi Ground
4	250.55	Rovaniemi Tower
5	320.7	Bodo ATIS
6	250.75	Bodo Tower
7	235.45	Kallax ATIS
8	250.3	Kallax Tower
9	265.0	Texaco-1 KC-135 Medium / Slow 71Y
10	319.8	Arco-1 KC-135 High / Fast 22Y
11	360.8	Shell-1 KC-135 MPRS High / Fast 41Y
12	304.0	CVN-71 Rough Rider (RRR) 71X
13	303.0	LHA-1 Tarawa (TWA) 79X
14	247.8	S-3B Mauler-1 (MAU) 64Y
15	347.8	Loki (E-2D)
16	348.7	Heimdall (E-3A)
17	242.17	ESR02 - CAS Range Operator
18	34.7	ESR02 - JTAC Odin
19	270.5	Blue
20	270.75	Red

RAMROD

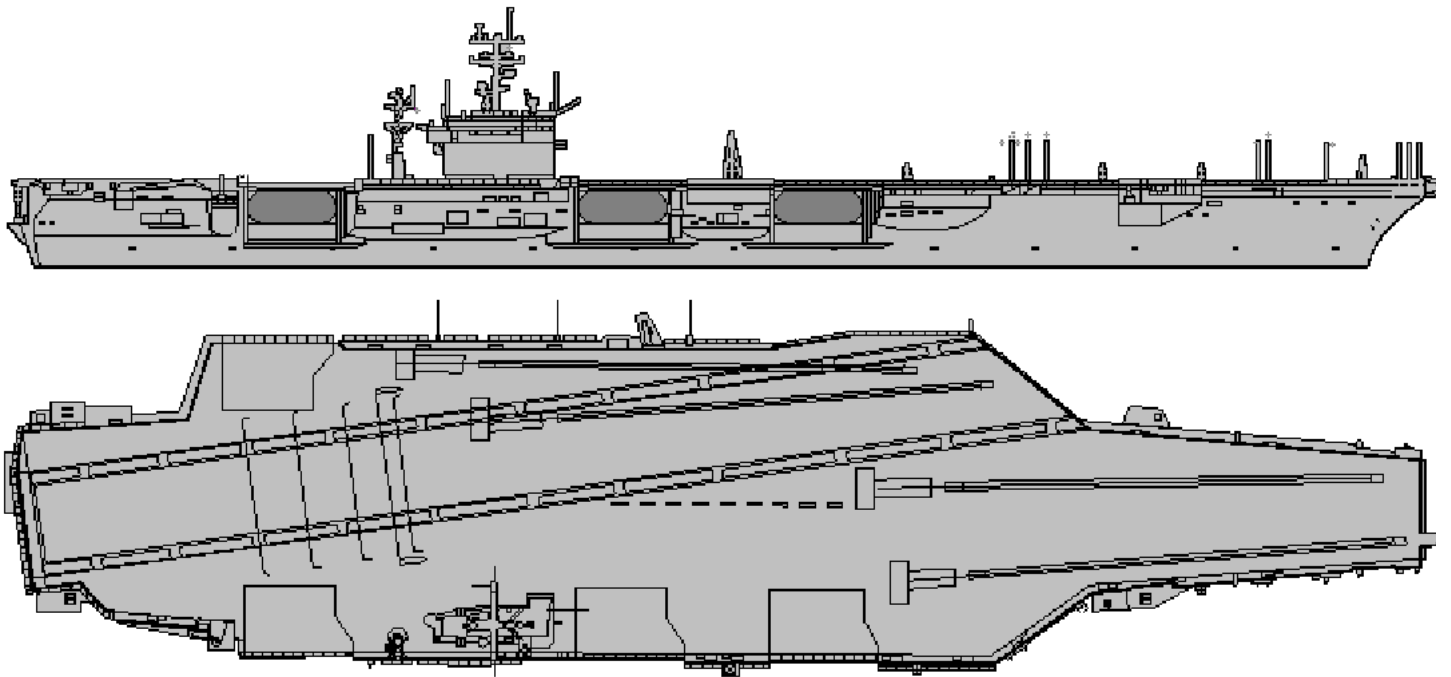
0	1	2	3	4	5	6	7	8	9
S	M	O	L	D	E	R	I	N	G

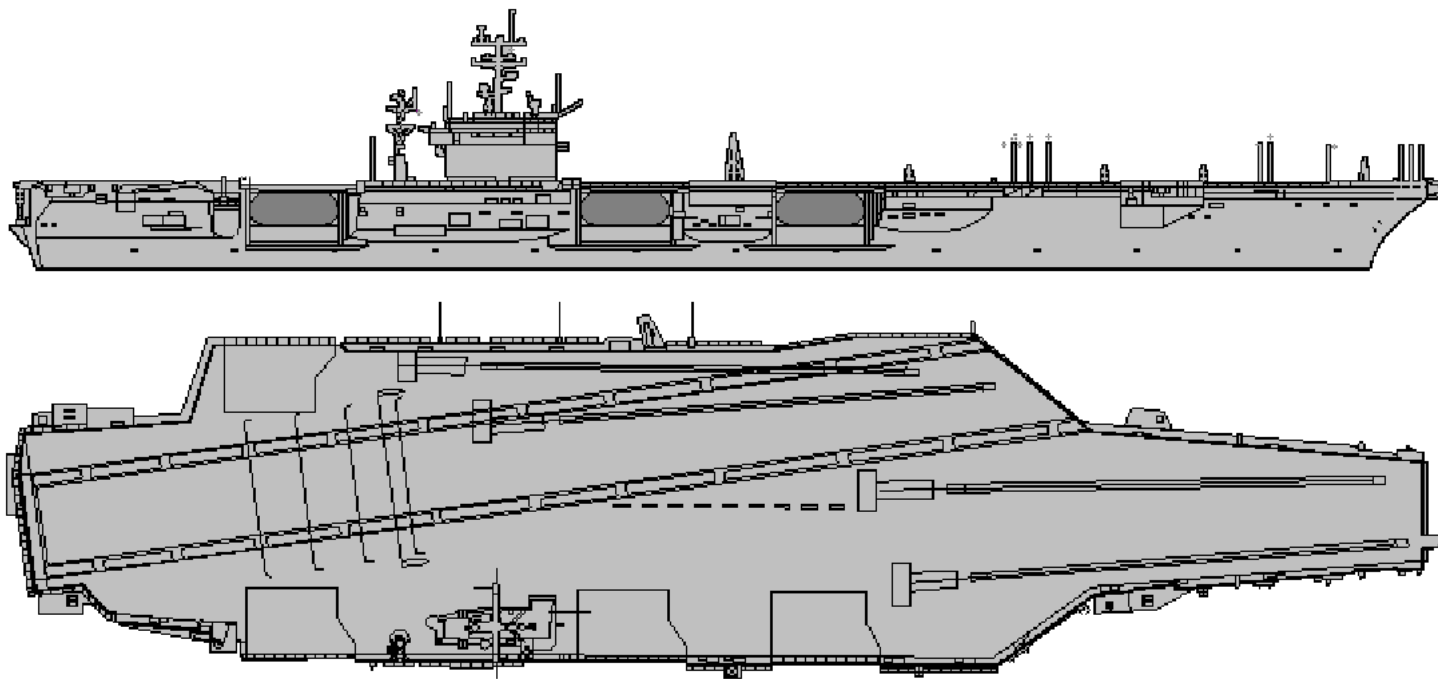
KTC 1400 C

	0	1	2	3	4	5	6	7	8	9
A	JCIV	KUQ	WGL	FB	YA	OPN	TH	DM	SE	XR
B	BQFK	WYJ	AOH	XD	CL	VGR	NS	TM	UE	IP
C	FESW	BAL	OKQ	PN	YR	TDV	HG	MU	JC	IX
D	VMNJ	TKA	URX	EI	QB	HGL	WY	FD	OC	PS
E	OFIL	RHM	NPS	YJ	TG	VEQ	AB	CW	UK	DX
F	XGRY	ENA	OFD	CQ	US	HVK	TB	IJ	WL	MP
G	DPOH	YGN	WXS	LM	FV	QAB	CE	KR	IT	UJ
H	QADO	FEG	IJS	KU	CL	WMR	HX	BN	YV	PT
I	JRPK	LYX	CUM	BD	FQ	NVT	SE	OH	WA	IG
J	UBFW	ODL	NPM	JA	ST	YCR	QI	GX	KH	VE
K	TLVK	QJS	AGP	CI	FR	UWE	BD	YO	HX	MN
L	CDBK	QNV	SHA	MI	WO	LJF	EY	GR	TU	PX
M	XRNA	KYL	TWC	GU	HB	EJS	OM	DQ	VF	PI
N	NFPL	RGO	UAV	DM	TK	QXY	BH	SE	IW	JC
O	SEWN	UDR	GOY	PL	QB	AFX	TJ	IV	MH	KC
P	EVSM	NDB	KLF	OT	UC	YRJ	WA	HQ	XG	PI
Q	FTEW	ACK	RLV	DI	YG	HOM	NJ	BP	SX	QU
R	MRCW	TQV	KOA	BY	XN	ESP	FJ	LG	UH	ID
S	WMEP	OXG	FND	VQ	TB	RJC	SH	YL	KU	AI
T	TAMN	EXJ	OSI	KU	BP	GVQ	LW	FR	CY	DH
U	RJIT	HXP	QFL	NA	OE	BSC	MK	GW	YU	DV
V	AUTH	DYE	OJF	XV	GR	PCW	SQ	BM	NL	KI
W	NISK	OGQ	HXY	UM	JE	ARW	VB	PT	FD	LC
X	EQMW	RLC	AJO	YH	VD	KTF	GB	SN	PU	XI
Y	SHGY	OFI	EBJ	VD	TN	CPA	QM	WR	UL	KX

NAVAIDS

Id	Name	Channel	Position	Elevation
BOO	Bodo	45	N67 15.838 E014 20.046	43
BNK	Banak	47	N70 03.937 E024 58.181	17
OYA	Andoya	28	N69 17.175 E016 08.658	19

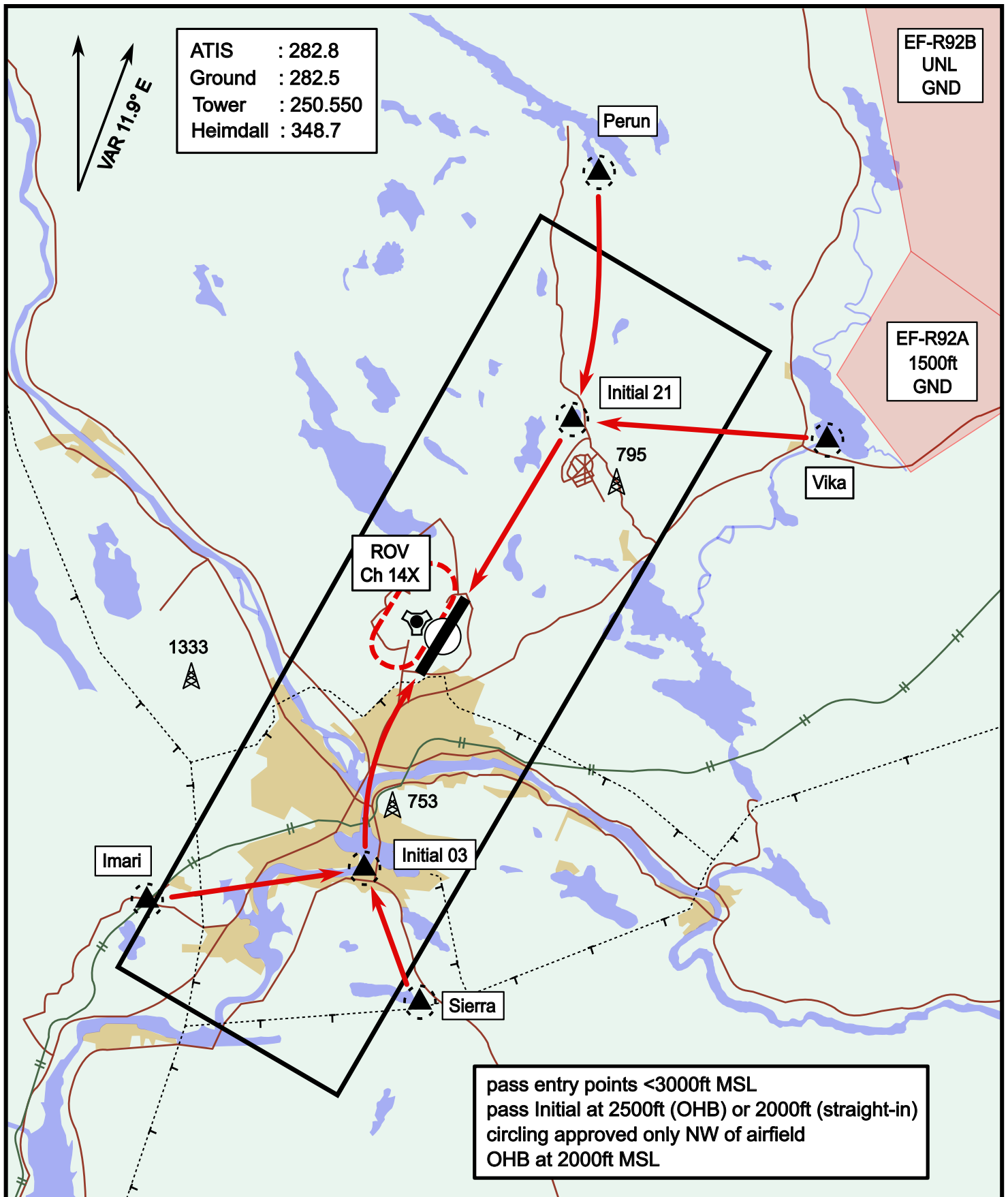




Visual Approach Jet

elev 643 ft

Rovaniemi, Finland



Vika	N66° 37.474 / E026° 13.557	Sierra	N66° 25.711 / E025° 46.610
Perun	N66° 44.135 / E026° 01.630	Imari	N66° 28.406 / E025° 31.291
Initial21	N66° 38.421 / E025° 58.682	Initial03	N66° 28.793 / E025° 44.105

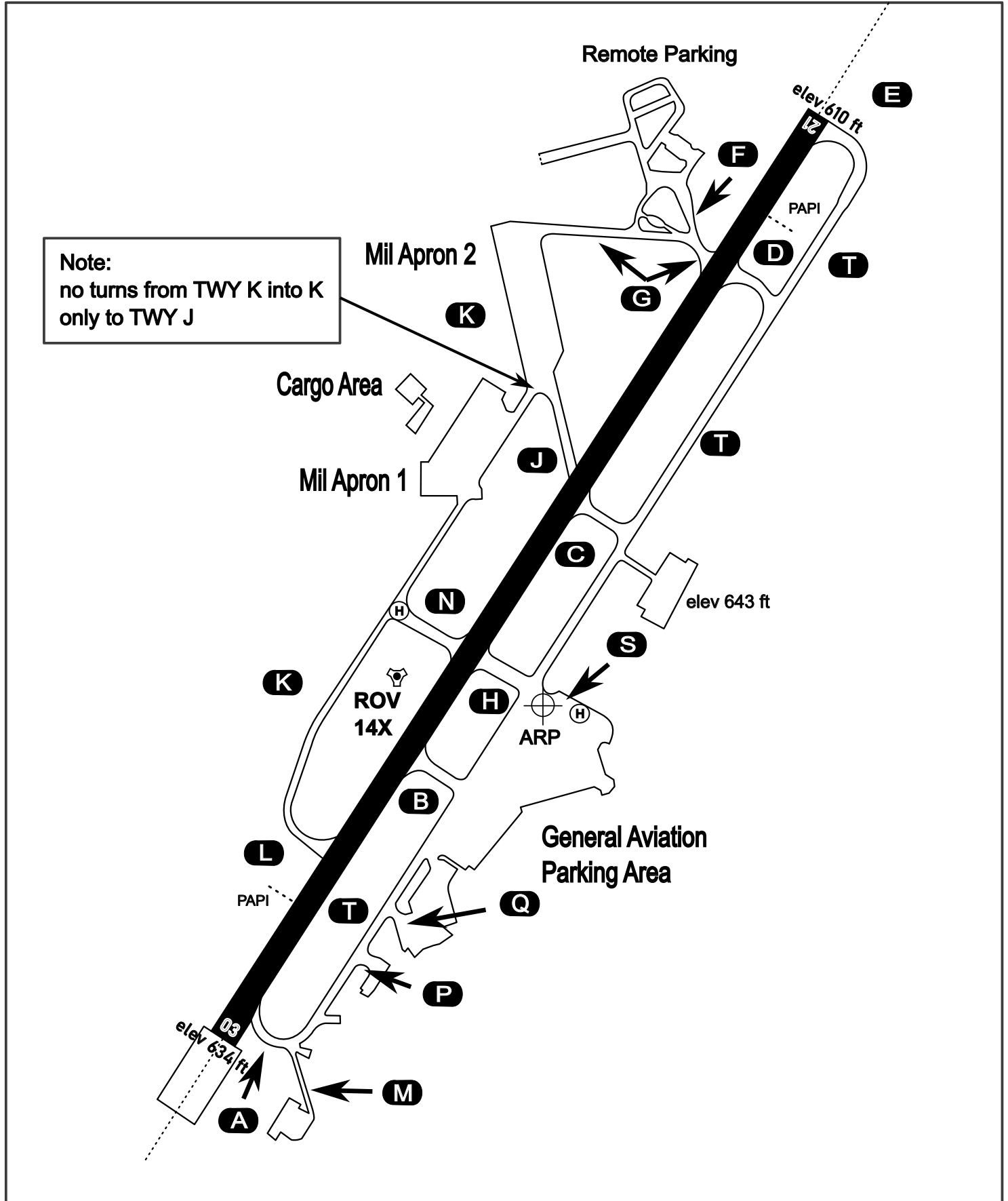
AERODROME CHART

Rovaniemi Aerodrome

ARP N66° 33' 42" E025° 49' 51"

elev 643 ft

ROVANIEMI, FINLAND



ATIS	Ground	Tower	Radar
282.800	282.500	250.550	348.700

