

MISSION DATA CARD

OPORD		Callsign		Mission		Date/Time		
3855/2025		Uzi 4		Training		082000MAY25		
Task	NIGHT VFR/AAR/LowerLVL					Freq		
AO	ESR04 (LowPass)					134.75		
Departure				Recovery				
VFR Departure				VFR Approach				
#	Callsign		Pilot		IFF	TCN	LSR	NET

LOADOUT

A/A	2xA120C, 2xA9X				GUN	100% HEI-T	
A/G					CHF	60	
POD					FLR	60	
TKS	FT300				FUEL	100%	

TOLD

	Takeoff	Target	Joker	Bingo	Land
FUEL	9166				

AIRBASES

	Name	TCN	ATIS	GND	TWR	RWY	Elev	ILS
Dep	Rovaniemi	14X	282.8	282.5	250.55	21	643	111.7
Arr	Rovaniemi	14X	282.8	282.5	250.55	21	643	111.7

FLIGHTPLAN

#	Name	Navaid/Coords/DME	ALT	TOT
1	SIERRA	N66 25.750 E025 46.540	4000	
2	LOW1S	N66 21.307 E025 23.201	100	
3	LOW1A	N65 47.311 E024 32.725	100	
4	N4	N65 43.624 E023 44.112	5000	
5	N5	N65 29.187 E022 32.209	5000	
6	LOW2S	N65 30.442 E022 21.720	100	
7	LOW2X	N65 35.492 E022	100	
8	LOW2Y	N65 44.843 E021 45.218	100	
9	LOW2A	N65 48.469 E021 40.163	100	
10	LOW2E	N66 E021 00.901	100	
11	ENOXI	N66 55.097 E021 38.820	20000	
12	NAFFI	N67 E023 11.657	20000	
13	IBSAN	N66 42.473 E025	10000	
14	PERUN	N66 44.165 E026	4000	
15	RV	N66 33.849 E025 49.746	600	

NOTES

LOW1 & LOW2: S=Start, A=Attack, E=End

Between ENOXI & NAFFI -> AAR

LowLvl 100 ft., Trail, 1M, 500 KIAS

SUPPORT**Tanker**

Callsign	TCN	Freq	ALT	TAS
TEXACO 1	71Y	265.0		
	Pos			
ARCO 1	22Y	319.8		
	Pos			

OTHER FLIGHTS

Callsign	Mission	Airframe	Freq	TCN	Grpld	Laser
Raptor 1	Training	2x F-16C	134.0	1/64		162X
AO	ESR04 (LowPass)	Task	NIGHT VFR/AAR/LowerLVL			
Viper 2	Training	2x F-16C	134.25	2/65		162X
AO	ESR04 (LowPass)	Task	NIGHT VFR/AAR/LowerLVL			
Falcon 3	Training	2x F-16C	134.5	3/66		162X
AO	ESR04 (LowPass)	Task	NIGHT VFR/AAR/LowerLVL			
Panther 2	Training	3x F/A-18C	264.15	3/66	2	172X
AO	ESR04 (LowPass)	Task	NIGHT VFR/AAR/LowerLVL			
Rattler 1	Training	4x AH-64D	133.5	1/64		125X
AO	R92A R92B R92C	Task				
Monster 1	Training	4x A-10C	132.15	1/64	21	161X
AO	ESR06	Task	Anti Ship			
Snake 1	Training	2x F-16C	134.0	1/64		162X
AO	ESR04 (LowPass)	Task	NIGHT VFR/AAR/LowerLVL			

RADIO CHANNELS

#	Freq	Name
1		Flight/Squadron specific
2	282.8	Rovaniemi ATIS
3	282.5	Rovaniemi Ground
4	250.55	Rovaniemi Tower
5	320.7	Bodo ATIS
6	250.75	Bodo Tower
7	235.45	Kallax ATIS
8	250.3	Kallax Tower
9	265.0	Texaco-1 KC-135 Medium / Slow 71Y
10	319.8	Arco-1 KC-135 High / Fast 22Y
11	360.8	Shell-1 KC-135 MPRS High / Fast 41Y
12	304.0	CVN-71 Rough Rider (RRR) 71X
13	303.0	LHA-1 Tarawa (TWA) 79X
14	247.8	S-3B Mauler-1 (MAU) 64Y
15	347.8	Loki (E-2D)
16	348.7	Heimdall (E-3A)
17	242.17	ESR02 - CAS Range Operator
18	34.7	ESR02 - JTAC Odin
19	270.5	Blue
20	270.75	Red

RAMROD

0	1	2	3	4	5	6	7	8	9
B	L	A	C	K	H	O	R	S	E

KTC 1400 C

	0	1	2	3	4	5	6	7	8	9
A	OSJQ	WKM	EUN	XG	AR	DFC	VT	LB	PH	YI
B	BHPS	WNF	IYQ	VM	OG	KDX	UA	JR	TE	CL
C	MEXP	TOV	AQH	KN	CI	WGF	JS	UD	LB	YR
D	KUAT	CLQ	EBM	DX	FR	GSN	VP	OW	HY	JI
E	PTCY	MRQ	KAS	IG	FV	BOL	UW	ND	HX	EJ
F	GEVI	YDK	MLP	UN	XR	WQA	FB	OT	SH	CJ
G	DGFW	QIL	KPX	HR	UO	NVM	JA	SE	TC	YB
H	VQOM	LAT	FHE	UP	NC	KBI	XD	YR	GJ	WS
I	QRPN	OWJ	LUD	KE	BM	CYI	GT	AF	VH	SX
J	YVJD	IXE	GBR	LP	CM	OSK	NF	HW	QA	UT
K	DBJA	TPS	IGH	QE	NR	FKV	CL	YX	UW	OM
L	MGHK	XOP	LUS	IT	CA	WNV	BY	DR	EF	QJ
M	JHQG	KNB	AWE	LT	UM	ODC	XR	FS	VP	IY
N	IACK	TYV	XDG	MO	JE	QPU	HW	BN	LS	FR
O	SJBN	HWF	QOM	GR	IU	KCY	AL	XD	PT	VE
P	TILW	JDX	HPM	BQ	FR	SYK	EO	NU	GA	VC
Q	UPSL	JME	BTN	OA	YR	IFV	CG	HW	DX	KQ
R	IVAT	OUW	KQL	HF	PC	SDJ	NY	BR	MX	EG
S	AWKD	RSO	TVI	MU	FN	QJH	CY	XL	GB	PE
T	LNAO	SQB	UXJ	YG	TP	KHM	EV	DF	CR	WI
U	XVEI	JRY	HTK	CG	NA	PSB	LW	QF	DM	OU
V	AOPQ	HRG	YBL	VF	IT	KNC	US	DJ	MX	WE
W	SPTF	EGK	YNA	DU	XW	JCH	LQ	IO	VB	MR
X	BSMV	IKD	RUC	LF	XW	YQH	OA	GP	NJ	TE
Y	HURG	TBF	AOJ	CW	YI	XVD	KL	EN	PS	QM

NAVAIDS

Id	Name	Channel	Position	Elevation
BOO	Bodo	45	N67 15.838 E014 20.046	43
BNK	Banak	47	N70 03.937 E024 58.181	17
OYA	Andoya	28	N69 17.175 E016 08.658	19

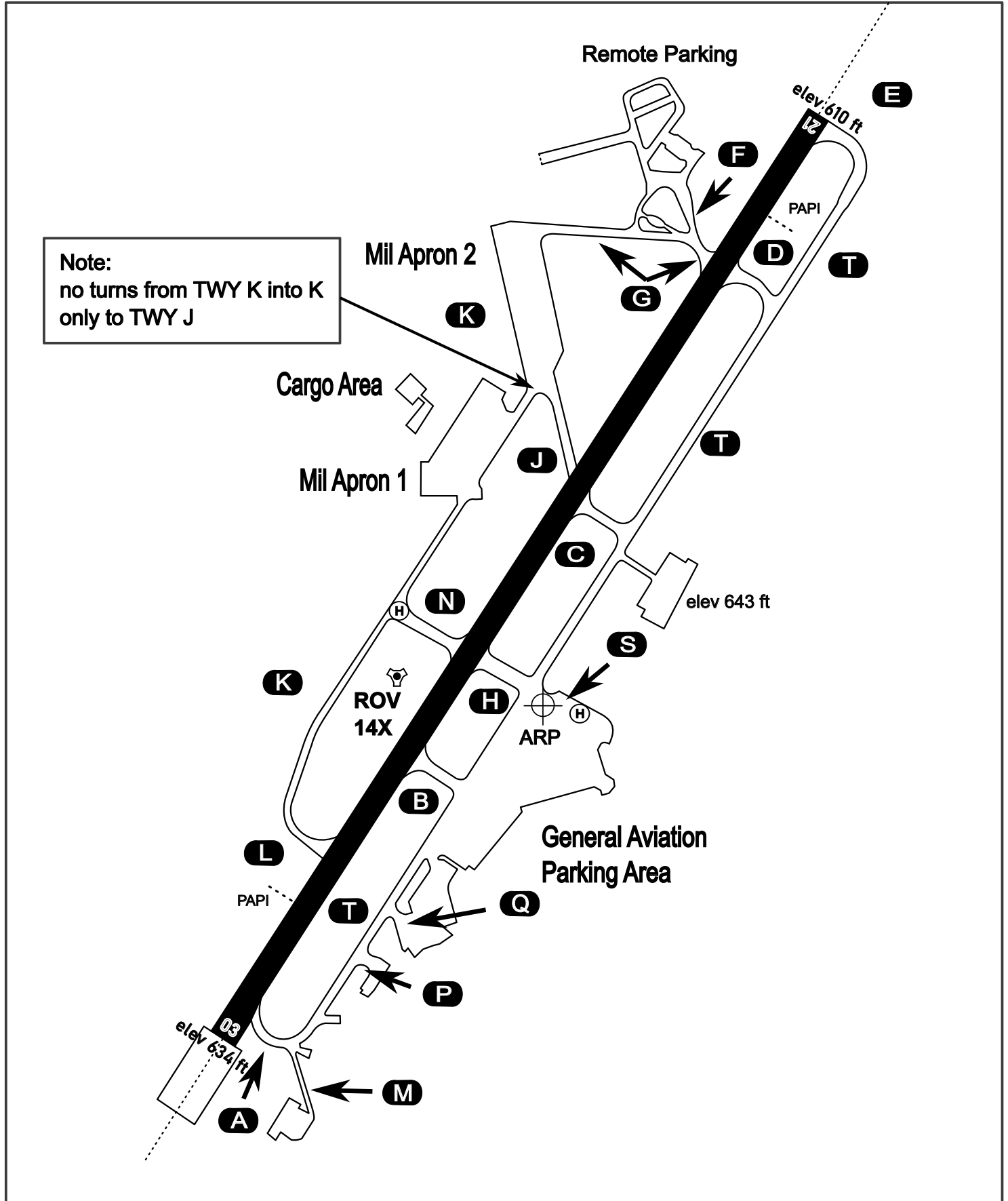
AERODROME CHART

Rovaniemi Aerodrome

ARP N66° 33' 42" E025° 49' 51"

elev 643 ft

ROVANIEMI, FINLAND

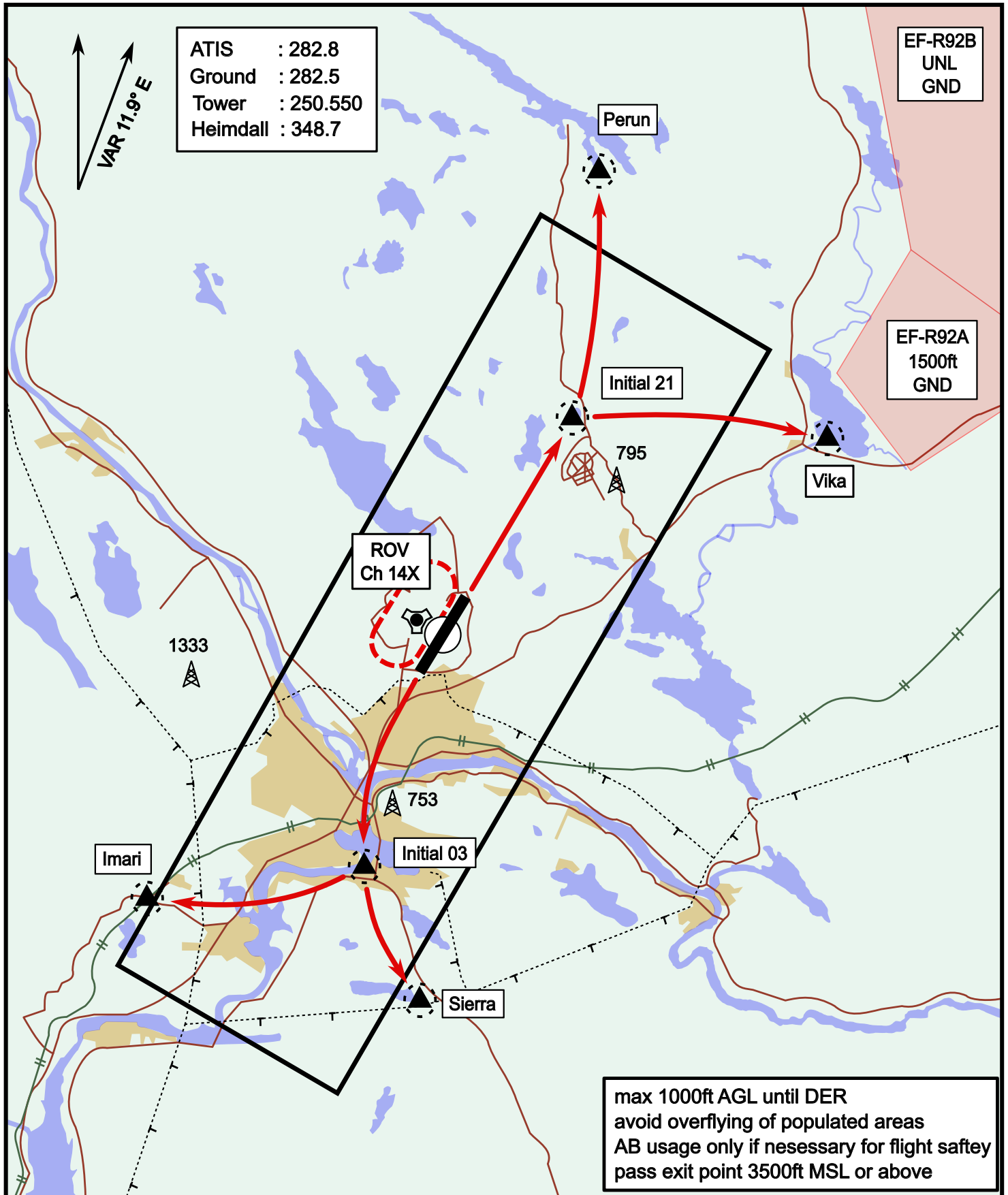


ATIS	Ground	Tower	Radar
282.800	282.500	250.550	348.700

Visual Departure Jet

elev 643 ft

Rovaniemi, Finland

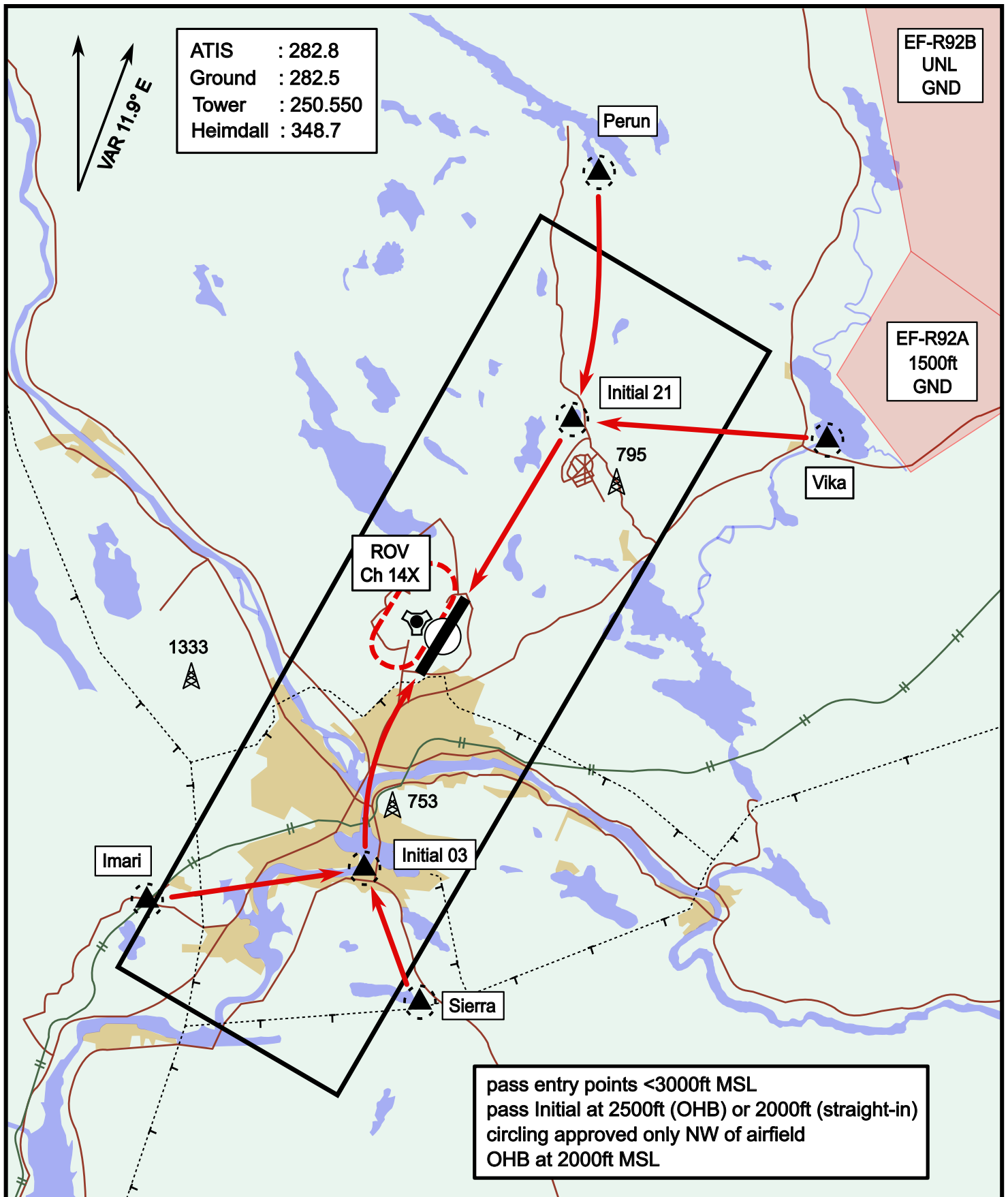


Vika	N66° 37.474 / E026° 13.557	Sierra	N66° 25.711 / E025° 46.610
Perun	N66° 44.135 / E026° 01.630	Imari	N66° 28.406 / E025° 31.291
Initial21	N66° 38.421 / E025° 58.682	Initial03	N66° 28.793 / E025° 44.105

Visual Approach Jet

elev 643 ft

Rovaniemi, Finland



Vika	N66° 37.474 / E026° 13.557	Sierra	N66° 25.711 / E025° 46.610
Perun	N66° 44.135 / E026° 01.630	Imari	N66° 28.406 / E025° 31.291
Initial21	N66° 38.421 / E025° 58.682	Initial03	N66° 28.793 / E025° 44.105